

# Cable tray crossbar quota





## Cable tray crossbar quota

---



### Cables Allowed in Tray

**CABLES ALLOWED IN TRAY** Cable tray is one of the most common methods of supporting wire and cable. There are many different types of cable tray including basket, ladder and solid-bottom. Tray

### Cable Tray Sizing Calculator

The calculator computes the cross-sectional area of all cables and compares it to the available tray cross-section. The fill percentage indicates how much of the tray is



### Cable Tray Technical Guide A practical guide to product selection and

Cable Tray Technical Guide A practical guide to product selection and installation This guide for engineers and installers has been developed by ABB as a practical reference regarding cable tray

### Best practice guide to cable ladder and cable tray

Cable ladder and cable tray systems The following recommendations are intended to be a practical guide to ensure the safe and proper installation of



### **Eurostrut Cable Trays , cable tray, cable route and**

Cable trays for industrial and marine use. Includes distribution trays, cable routes and NATO-type models. Request a quote directly via our webshop.



### **Cable Tray Size and Dimensions: How to Choose the**

Learn how to calculate the perfect cable tray size and dimensions for your electrical project. This guide covers load capacity, fill ratios, and industry



### **NavePoint 1U Cable Management Bracket Cross Bar**

CONVENIENT: Perfect for mounting equipment with high-density cabling such as patch panels, network switches or PDUs to ease access or reduce cable strain.



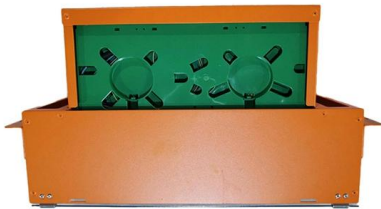
### RackSolutions Cable Management Crossbar

Cable management bar, also called a crossbar, is perfect for managing small cable bundles. Takes up less than 1U of space to easily mount with other equipment.



### Cable Tray Capacity Calculator

This calculator determines the maximum number of cables that can be safely housed within a cable tray based on its dimensions and the cross-sectional



### Max Cable Numbers Fill Table

Choose right wire mesh cable tray size according to cable numbers. You can get quick reference here.



### Cable Tray Sizing Calculator , IEC 61537 & NEC 392 Guide

Use this cable tray sizing calculator to check fill %, select tray size, and comply with IEC 61537 & NEC 392 with formulas, example and checklist.





## SELECTION OF CABLE TRAYS

The cable volume is an important criterion for the selection of the correct cable support system; for which there must be sufficient space in the cable tray. As the



### Quotation Check List for Cable Tray

Follow us on social media to get the latest product and support information.



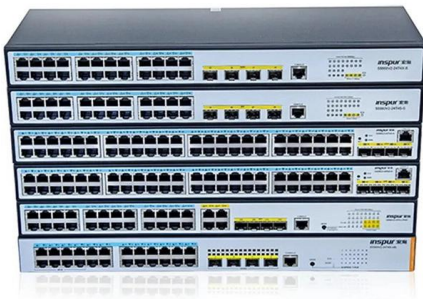
### Cable Tray Technical Guide A practical guide to product selection and

Cable tray installed in a hazardous location must contain only those cables that are appropriate for this type of environment as defined in Chapter 5 of the NEC.



### Cable Tray Raceway Fill and Load Calculations

Resources For Electrical & Electronic Engineers  
Cable Tray Raceway Fill and Load Calculations  
Cable tray / raceway is integral part of any cable management





### RackPath 1U Cable Management Bracket Cross Bar

It can easily organize cables from the front or back of your 19-inch server rack. The pass-through holes helps to route your cables and reduce tension on equipment ports.



### Cable Tray Fill Calculator

Cable Cross-Sectional Area: For round cables, use  $\pi r^2$ , where r is the cable radius. Allowable Fill Area: This varies based on the tray type and local electrical codes.

### CABLE TRAY SYSTEMS GUIDE

Cable Tray Systems Guide HUBBELL Hubbell Wiring Device-Kellems and Hubbell Premise Wiring are divisions of Hubbell Incorporated, a U.S. headquartered manufacturer with over 130 years of



### CABLE TRAY SYSTEMS GUIDE

The total load supported by the cable tray, uniformly distributed. This will be the combined weight of all of the cables or tray contents, any environmental loads (snow, ice, dust) and any concentrated static



## How Many Cables Can a Cable Tray Hold? A

How Many Cables Can a Cable Tray Hold? A Comprehensive Guide During the design of a cable management system, one of the most important



## Types of Cable Trays - Advantages, Applications and Sizes

Explore the types of cable trays, their advantages, applications, and standard sizes. Learn how they improve cable management and support various industries.



## Core Principles for Electrical and Instrumentation Cable

In industrial settings, electrical and instrumentation (E&I) cable trays or bridge racks play a critical role in organizing and supporting power, control, and signal cables



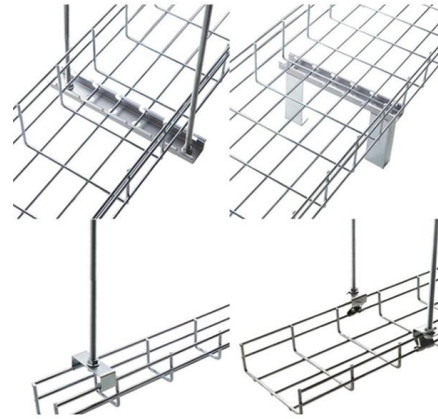
## NavePoint 1U Cable Management Bracket Cross Bar

These NavePoint are a great solution to provide additional strain relief to the cables in your rack or enclosure. They can be mounted on the front or rear of your rack



## Cable Tray Spacing Standards for Installation and Safety

Discover the essential cable tray spacing requirements for safe and efficient installation. Learn key standards, horizontal and vertical spacing, and more.



## How Many Cables Can a Cable Tray Hold? A

This comprehensive guide will take you through the parameters; there are tables included for various types of cables, cable diameters, and tray

## Cable Tray Quotation Guide , PDF , Civil Engineering

Cable tray quotation guide - Free download as PDF File (.pdf), Text File (.txt) or read online for free.



## Cable Management Tray

This cable management bar has a 3" mounting depth and a solid steel construction. It is used for securing large amounts of cables from server equipment. There are multiple ways to handle cable



## Contact Us

---

For datasheets, pricing, or custom high-speed optical interconnect solutions, please visit:

<https://www.syropy.com.pl>