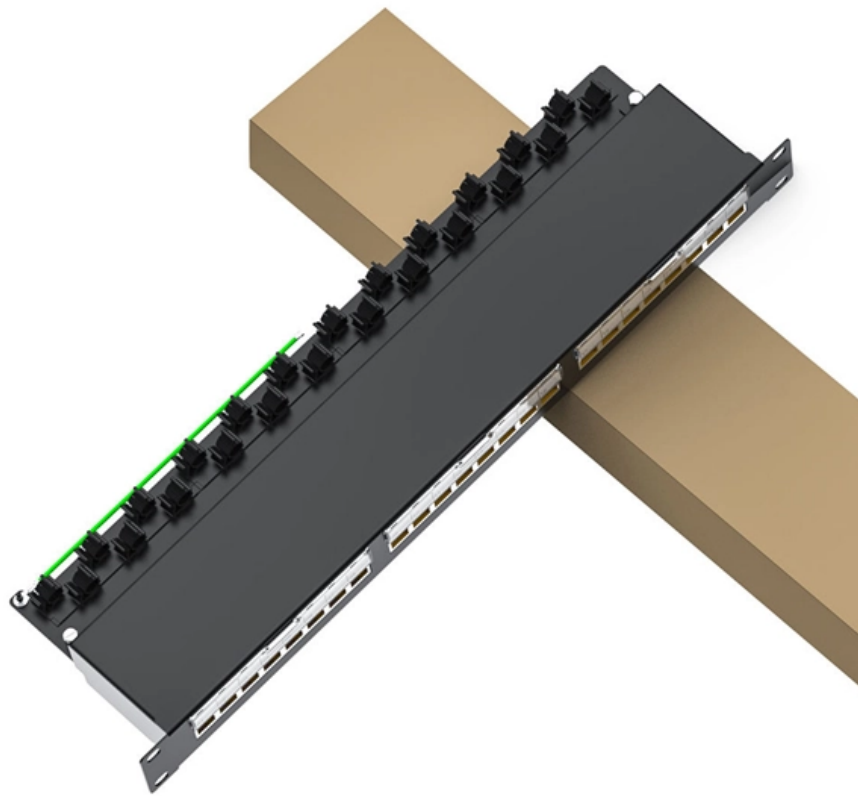


Cable tray climbing on bridge piers





Cable tray climbing on bridge piers



Cable Tray Bridge Construction Method

This document outlines the method statement for building a cable tray river crossing for a solar power plant in Gorontalo. It involves installing pile foundations using a

What is the difference between cable ladders and cable

When it comes to cable ladders and cable trays there are a few fundamental distinctions that should make your choice of support easier.



Types of Cable Trays - Purpose, Advantages,

Cable tray is alternatives to wire ways and electrical conduits, which completely enclose cables. Study types of cable trays, purpose, advantages.

Best practice guide to cable ladder and cable tray

The following recommendations are intended to be a practical



Cable Tray SHIB NAL

Overloading cable trays can lead to a breakdown of the tray, its connecting points and/or supports, causing hazards to persons underneath the cable tray and even leading to possible electric shock



B-Line series Cable Tray Design Considerations

Our wind certification report provides you with list of acceptable B-Line series cable tray supports, fittings and covers based off of the environmental conditions, cable loading, and type of cable tray in your



Eliminating bridge piers using stay cables with

In a few occasions, under-deck cable-stayed systems and combined cable-stayed systems have been used in bridges in order to allow the elimination of a cer-tain pier or the placement of an





Guide to cable support systems

Four different mesh cable tray types are available, depending on the requirements, area of application and cable quantity. The innovative Magic connection system of the GRM and G-GRM mesh cable

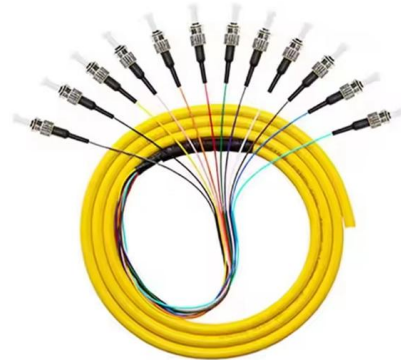


Cable trays evolving with building design , Cabling

Cable trays are suspended or wall-mounted, cable-support systems. Traditional cable trays are made of steel or aluminum, and come in depths of two, three,

CABLE TRAYS GENERAL INFORMATION AND

In order to install the cable tray supports, first find the required elevation from the floor to the bottom of the cable tray and establish a level line with a laser or a



B-Line series Cable Tray Design Considerations

As an industry leader in cable tray, Eaton offers one of the widest ranges of cable management solutions available in the market today with its B-Line series portfolio. With unmatched quality and service, we

Best Practice Guide to Cable Ladder and



Cable Tray Systems

This guide covers cable ladder systems, cable tray systems, channel support systems and associated supports intended for the support and accommodation of cables and possibly other electrical



Cable Tray Institute

The Cable Tray Institute (CTI) was founded in 1991 to support the cable tray industry by engaging in research, development, education, and the dissemination of

Climbing Energized Cable Trays NEC OSHA and Safety

Is climbing in energized cable trays safe and legal? Explore NEC, OSHA, industry standards, and best practices for electrical safety.



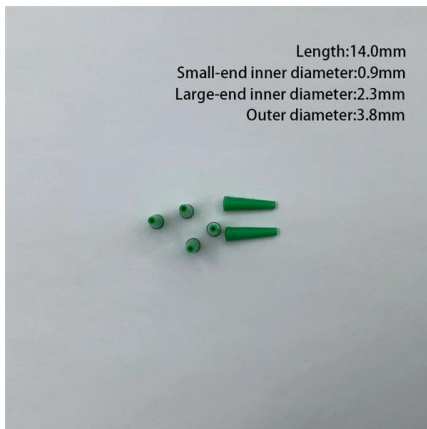
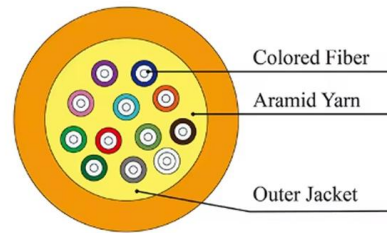
Beama Best Practice Guide , Installation Of The System , Cable

Cable ladders, cable trays and their supports should be strong enough to meet the load requirements of the cable management system including cables and any future cable additions and any other



working on cable trays , Information by Electrical Professionals for

I work in an industrial setting. Are there any laws in the U.S. that prohibate working, crawling, or walking on energized high voltage cable trays? If so what or where are they?



100+ Essential Questions Answered About Cable Trays:

Discover over 100 expert answers about cable trays, covering key topics like material selection, load capacity, installation methods, and maintenance.

Cable-Stayed Bridges Explained: Components, Working

Cable-stayed bridges explained: components, working principle, load transfer, advantages, limitations, and ideal design uses for modern spans.



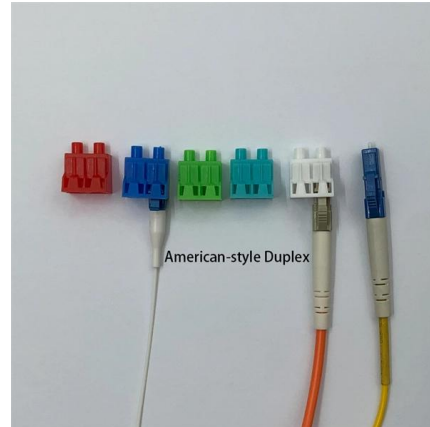
Cable Stayed Bridges

Cable Stayed Bridges In subject area: Engineering A cable-stayed bridge is defined as a structural system that features a continuous girder supported by inclined stay cables attached to towers,



How to Install Cable Tray: A Comprehensive Guide to Different Cable

Welcome to our step-by-step guide on installing cable trays! In this video, we'll explore the different types of cable trays available and provide detailed instructions for their installation.



Cable Stayed Bridge - Types, key features and

A cable-stayed bridge utilizes towers to support the deck via cables, offering strength, efficiency, and aesthetic appeal. Its design permits longer spans

CABLE TRAYS, CABLE LADDERS CABLE SUPPORT SYSTEMS

It's a basic cable management system that comes in a variety of sizes to make entering and exiting new or existing cables in the tray easier. These are typically used to transport huge web bundles and



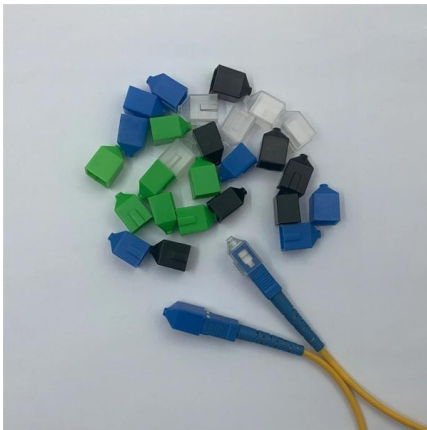
Introduction to 3 types of cable bridges and their

In our life, there is a common cable tray cable trough, tray type, and ladder. Here are the characteristics and uses of these three types of bridges with understanding.



Introduction to 3 types of cable bridges and their

In our life, there is a common cable tray cable trough, tray type, and ladder. Here are the characteristics and uses of these three types of bridges with



Cable trays

Our cable trays are produced in fit for purpose materials like stainless steel, galvanized, aluminium and fibreglass (FRP/GRP) composites to suit any project

The Comprehensive Guide to Cable Tray Systems:

Master cable tray systems with our expert guide covering structural engineering, material selection, and NEC compliance to ensure safe, efficient,



Guide to cable support systems

A cable support system consists of cable support lengths and system components, such as cable support fittings, support elements, mounting elements and system accessories. The cable support





Cable Safe Climb Systems

Common ladder mount cable safe climb system applications include towers, billboards, commercial buildings, utility, solar panels, and wind turbines. Most of



Guys, how normal is this, really? : r/electricians

Second, most cable trays will warn that they are not intended to be walked or climbed on. Third, I'm sure you guys could have set up a pulley or two to navigate that radius.

Contact Us

For datasheets, pricing, or custom high-speed optical interconnect solutions, please visit:
<https://www.syropy.com.pl>