

Cable tray clearance height





Overview

Clearances: Maintain at least 12 inches of vertical clearance above trays for installation and maintenance access (2026 NEC update). Cable Types: Only use conductors rated for open-air environments, such as Tray Rated (Type TC) or Metal-Clad (Type MC) cables. Cable tray (or cable ladder) systems are a popular alternative to electrical conduit systems, as they have an outstanding record for dependable service, design flexibility and cost savings in commercial and industrial applications. Where products of five metre lengths or above are packed in bundles, they shall be supported with a minimum of three timber bearers which provide sufficient clearance to accommodate the forks of a forklift truck. When installing two cable trays in parallel at the same height, the distance between them should be no less than 0. Here's a simplified overview: These figures may vary by manufacturer, material, and design.



Cable tray clearance height



Best Practice Guide to Cable Ladder and Cable Tray Systems

This guide covers cable ladder systems, cable tray systems, channel support systems and associated supports intended for the support and accommodation of cables and possibly other electrical

Cable Tray Technical Guide A practical guide to product selection and

Cable Tray Technical Guide A practical guide to product selection and installation This guide for engineers and installers has been developed by ABB as a practical reference regarding cable tray



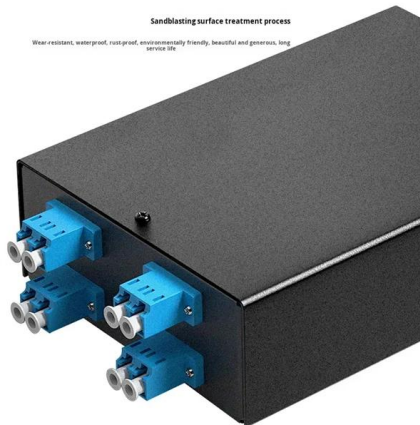
Section 27 05 36 Cable Tray for Communications Systems

Multiple tiers of wire mesh cable tray should be installed with a minimum clearance of 12" in between the trays. When located above an acoustical drop ceiling, wire mesh cable tray should be installed a



SECTION 26 05 36 CABLE TRAYS FOR ELECTRICAL SYSTEMS

DIVISION 26 - ELECTRICAL SECTION 26 05 36 - CABLE TRAYS FOR ELECTRICAL SYSTEMS PART 1: GENERAL 3.01 Scope of Standard This standard provides general guidance concerning the



Telecommunications Horizontal Cabling and Support Structure

Cable tray products shall be B-Line or Flex Tray brand. Cable tray will have 12" of clearance above and 6" below. No cable may be attached to conduit, pipes, any other utility structure, or laid on top of

Precautions for Cable Tray Installation

Cable Tray Installation Guide The correct installation of cable trays is crucial for establishing a reliable and efficient cable system. It ensures that cables are



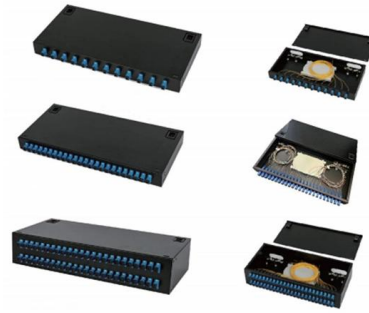
B-Line series Cable Tray Design Considerations

For ladder or ventilated trough trays, the total sum of the cross-sectional areas of all the cables to be installed in the cable tray must be equal to or less than the allowable cable area for the tray width, as



CABLE TRAYS GENERAL INFORMATION AND

Using cable trays as walkways can cause personal injury and also damage cable tray and installed cables. Performances of cable tray systems are dependent on

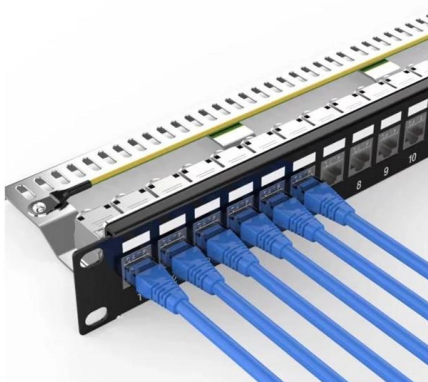


Section 27 05 36 Cable Tray for Communications Systems

3.2.11 When the pathway is overhead, wire mesh cable tray should be installed with a minimum clearance of 12" above and below (between tray and top of rack/cabinet) the tray. Leave 12" in

CABLE TRAY SYSTEMS GUIDE

Cable Tray Systems Guide HUBBELL Hubbell Wiring Device-Kellems and Hubbell Premise Wiring are divisions of Hubbell Incorporated, a U.S. headquartered manufacturer with over 130 years of



Cable Tray Technical Guide A practical guide to product selection and

In designing supports for a cable tray system, consideration should be given to the loads associated with future cable additions and any additional loading that may be applied to the cable tray system (e.g.,

Requirements for working clearances and



spaces around electrical

Home Letters of Interpretation Requirements for working clearances and spaces around electrical equipment, e.g., ladder cable trays.

Mesh door/glass door optional



Sp-601 glass door

Sp-602 mesh door



Best Practice Guide to Cable Ladder and Cable Tray Systems

Cable ladders and cable trays should be mounted far enough off the floor or roof to allow the cables to exit through the bottom of the cable ladder or cable tray.

Microsoft Word

Provide items as specified. Physically verify existing site conditions prior to purchase and delivery of the materials. Except for the use of ladder rack and wire basket tray where indicated,



Cable Tray SHIB NAL

Cable trays are not raceways, but they are treated as a structural component of a facility's electrical system. Cable trays are a part of a planned cable management system to support, route, protect and



Cable tray install , Information by Electrical Professionals for

In general, vertical spacing for cable trays should be 30 cm (12 in), measured from the bottom of the upper tray to the top of the lower tray. A minimum clearance of 23 cm (9 in) should be



Cable Tray Installation Rules (NEC 392) - Electrical Trader

Clearances: Maintain at least 12 inches of vertical clearance above trays for installation and maintenance access (2026 NEC update).
Prohibited Areas: Cable trays cannot be used in

Cable Tray Questions , Cable Tray Institute

NEC section 318-5 (e) indicates that multiconductor cables rated 600 volts or less are permitted in the same cable tray, however, separation of power and control cables is necessary as indicated in other



Cable tray clearances , Information by Electrical Professionals for

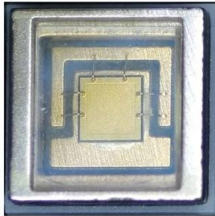
The codes from 12-2200 are for clearances from a cable tray to other cable trays, or other objects. And yes, 600mm clearance is what you would need from a cable tray to a conduit rack,

IEC Standard for Cable Tray: Complete



Technical Guide

The IEC standard for cable tray recognizes multiple tray types depending on application and structure. Each type serves a different purpose in



Cable Tray Dimensions and Specifications as per NEC

Many electrical systems employ cable trays. They route cables safely & efficiently. NEC defines minimum cable tray size & electrical installation

Cable Tray Clearance Standards

This document outlines clearance requirements for cable trays. It provides a table with clearance dimensions labeled a through k for typical and special clearance



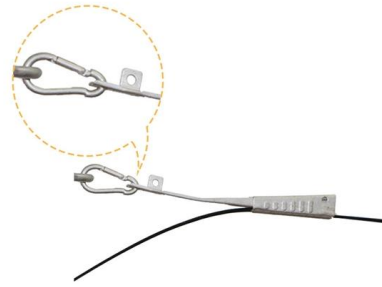
Cable Tray Spacing Standards for Installation and Safety

Height Above Ground: Cable trays should ideally be installed at least 2.2 meters above the ground. Top Clearance: The top of the cable tray should



Electrical Room Minimum Height Clearance

Is there a minimum height clearance requirement in electrical rooms, besides those required for working space, frontal clearances and dedicated space? Can there be piping, cable tray,



Cable Tray Design and Standards Guide

1. The document outlines codes and standards that must be followed for design and construction of cable trays and their components. Standards listed include those

SECTION 26 05 36 CABLE TRAYS FOR ELECTRICAL SYSTEMS

Designer shall provide a 12" vertical working clearance above the cable tray with no continuous obstructions. In addition, a 12" space must be provided on either side for working access.



Cable tray installation requirements-ZM Technology Co., Ltd.

(2) When the cable tray crosses with the electrical equipment, the clear distance between them shall not be less than 0.5m. (3) When two sets of cable trays are laid in parallel at the same



Factors to Consider for Cable Tray Spacing *Safety

Cable Tray Spacing When determining cable tray spacing, factors to consider include the tray's load capacity, the weight of the cables, and the environment in which



Contact Us

For datasheets, pricing, or custom high-speed optical interconnect solutions, please visit:
<https://www.syropy.com.pl>