

Cable tray at the bottom of the distribution cabinet





Cable tray at the bottom of the distribution cabinet

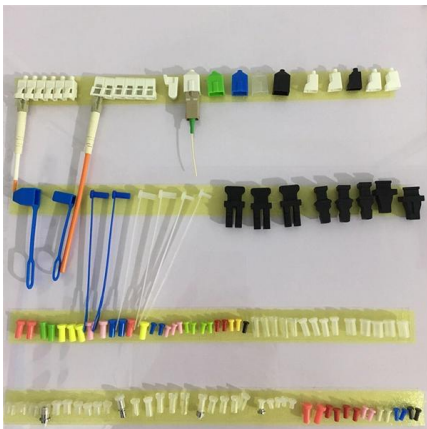


Cable Tray Types and Sizes

The solid-bottom cable tray is designed as a fully enclosed structure without any ventilation holes. This closed design provides complete coverage for the cables,

A Guide to Installing and Supporting Electrical Cable Trays

A professional guide to installing electrical cable tray systems per NEC Article 392. Covers support, securing cables, and fill calculations.



Types of Cable Trays - Advantages, Applications and Sizes

Explore the types of cable trays, their advantages, applications, and standard sizes. Learn how they improve cable management and support various industries.

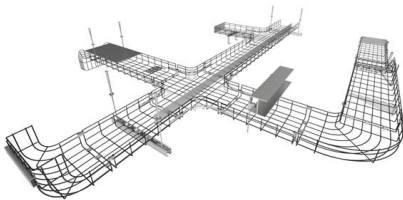
Cable Tray Types and Sizes

Explore various cable tray types and sizes for electrical installations. Learn about ladder, perforated, solid-bottom, wire mesh, and channel trays in this complete



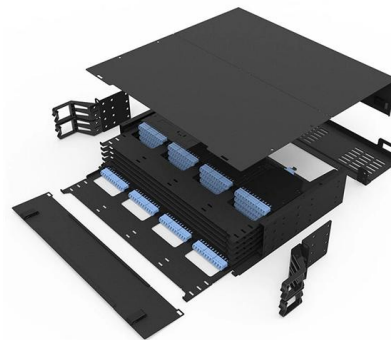
News

Conclusion: Installing power distribution cabinets and boxes in data rooms might seem straightforward, but it requires a meticulous approach to ensure safety and optimal performance. By adhering to



Best practices for underfloor cable management

All cables should be supported in cable tray that is run overhead, above the equipment or under the raised floor. This paper addresses the routing of cable pathway beneath a raised floor to maintain



Anixter - Wire and Cable, Networking, Security and Utility Power

Anixter - Wire and Cable, Networking, Security and Utility Power Solutions



Cable Tray Systems: Requirements and Best Practices

Comprehensive guide to cable tray systems requirements: tray types, materials, loading, supports, bonding, routing, and best practices for safe electrical cable management.

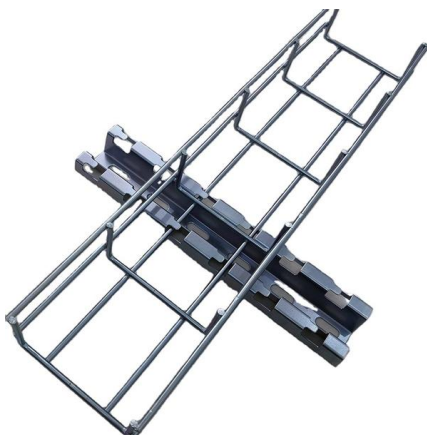


Cable Tray And Fittings , Graybar Store

A cable tray system is used to support insulated electrical cables used for power distribution, control, and communication. Cable trays are used as an alternative to open wiring or electrical conduit

How to Install Cable Tray: A Comprehensive Guide to Different Cable

Welcome to our step-by-step guide on installing cable trays! In this video, we'll explore the different types of cable trays available and provide detailed instructions for their installation.



Cable Tray Technical Guide A practical guide to product selection and

SOLID-BOTTOM CABLE TRAY Providing additional cable protection, solid-bottom cable tray is sometimes preferred to support and protect numerous small instrumentation and control cables.



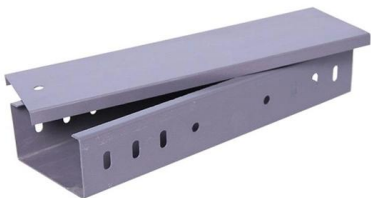
ITER Cabling Handbook

A necessary space must be devoted to workers on the cable trays under the false floor (cable tray modifications, pulling and crimping cables) to avoid walking on it.

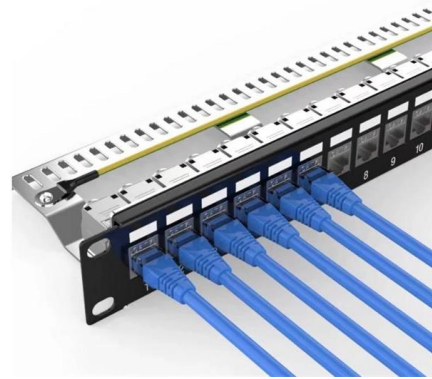


Cable Tray Technical Guide A practical guide to product selection and

Cable tray is considered to be a system. It must provide continuous support for cables, and the electrical continuity of the cable tray system must be maintained.



Cable Tray and its types & Sizes



Data Center Cabling Guide , Snake Tray

Snake Tray pre-fabricated data center cable trays and power distribution systems are the choice of data center architects and engineers seeking to speed deployment



Local pallet and cable tray company France

All Companies and suppliers for local-pallet-and-cable-tray-company Find wholesalers and contact them directly Leading B2B marketplace Find companies now!



A cable tray is a type of a containment used to support insulated electrical cables used for power distribution, control, and communication.



Wire Basket Overhead Cable Tray Routing System Application Guide

The Wire Basket Overhead Cable Tray Routing System is composed of pathways, splices, mounting brackets, and accessories that allow the system to be configured for a wide range of applications and

Cable Tray Dimensions and Specifications as per NEC

Ladder cable tray: The ladder cable tray must be divided into 2 zones (a barrier or separator is not required, but can be employed if desired) so that No.



Guide to cable support systems

Four different mesh cable tray types are available, depending on the requirements, area of application and cable quantity. The innovative Magic connection system of the GRM and G-GRM mesh cable



Types of Cable Trays: Ladder, Perforated,



Basket, Solid

Explore all types of cable trays--ladder, perforated, basket, solid, and channel. Learn their uses, materials, pros, cons, and key differences.



Cable Routes Inside an IT Cabinet

The cable tray is optional and used to lead cables from the cabinet front to the cabinet rear. The depth-directed cable tray is optional and used to manage the cable routes on the side of a cabinet.

Mastering Cable Tray Installation , Step-by-Step Guide for a Seamless

Learn how to install cable trays correctly. Get the ultimate step-by-step guide on setting up a seamless and reliable cable management system.



Best way to feed a drop cable into a rack? : r/networking

Have ~200 cables coming in through a drop in the ceiling, and trying to decided on the best way to feed them into the patch panels. Is it better to have all the cables



Cable entry into cabinet/panel -top or bottom?

Cable entry into a cabinet/panel is usually done from bottom. But is there any advantages for this? Are there any standard recommending it? What is wrong in having top entry?



Contact Us

For datasheets, pricing, or custom high-speed optical interconnect solutions, please visit:
<https://www.syropy.com.pl>