

# **Cable entry from the side of the cable tray**





## Cable entry from the side of the cable tray

---



### CABLE TRAY SYSTEMS GUIDE

Hubbell's NEXTFRAME® Ladder Tray is the effective and widely used cable runway that supports and delivers bundles of cable between cabinets, racks, and closets, along walls, and suspended from

### Complete cable tray manual for electrical engineers and

Complete cable tray manual for electrical engineers and designers (on photo: power cable management ladder tray systems assembled aluminum cable tray ladder



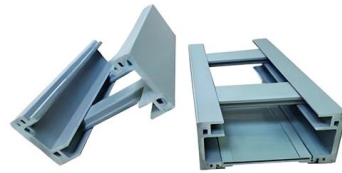
### 392.46 Bushed Conduit and Tubing.

The two most common methods to transition from a cable tray to the equipment are: Cables or conductors leaving the cable tray and entering the equipment through a



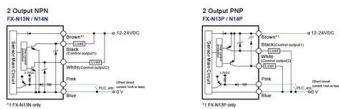
### Cable entry into cabinet/panel -top or bottom?

Top entry is fine, there are problems associated with cable or wire support - sticky back tie wrap supports will always come loose or fall off. Plus if you prefer bottom entry, your cables can



### Resources for Cable tray and ladder systems

Submittals for cable ladder and tray Eaton's submittal builder tool for B-Line series cable ladder and tray allows you to easily filter, select and download straight



### Cable Tray Installation

Learn everything about cable tray installation with our complete guide. Discover types, steps, and safety tips for efficient electrical cable management.



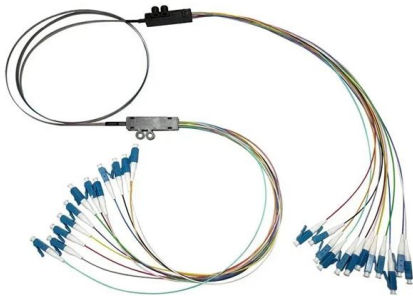
### Core Principles for Electrical and Instrumentation Cable

Layered Separation: Strong current and high-voltage cables are positioned apart from low-current, low-voltage instrumentation cables. Layered separation reduces



## Essential Principles for Cable Tray Access Path Setup

Discover essential principles for cable tray access path setup. Learn about safety, convenience, and cost-effective design considerations for



## Precautions for Cable Tray Installation

Cable Tray Installation Guide The correct installation of cable trays is crucial for establishing a reliable and efficient cable system. It ensures that cables are

## Mastering Cable Tray Installation , Step-by-Step Guide for a Seamless

Learn how to install cable trays correctly. Get the ultimate step-by-step guide on setting up a seamless and reliable cable management system.



## Cable Tray Technical Guide A practical guide to product selection and

Cable Tray Technical Guide A practical guide to product selection and installation This guide for engineers and installers has been developed by ABB as a practical reference regarding cable tray



## Cable Tray Design, Layout, and Overall Wiring Planning

Learn about effective Cable Tray Design and Layout for electrical systems. Our guide covers planning, material choice, safety,



### Best practice guide to cable ladder and cable tray

Cable ladder and cable tray systems The following recommendations are intended to be a practical guide to ensure the safe and proper installation of

### B-Line series Cable Tray Design Considerations

Cables may exit or enter through the top or the bottom of the tray. Ladder cable tray without covers provides for maximum air flow, dissipating heat produced in current carrying conductors. Dust



### Cable Tray Systems: Requirements and Best Practices

Comprehensive guide to cable tray systems requirements: tray types, materials, loading, supports, bonding, routing, and best practices for safe electrical cable management.



## Cable Tray Technical Guide A practical guide to product selection and

In designing supports for a cable tray system, consideration should be given to the loads associated with future cable additions and any additional loading that may be applied to the cable tray system (e.g.,

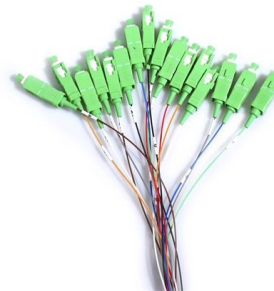


## Cable Tray Systems: A Complete Guide to Types

Discover the essential guide to cable tray systems. Learn about ladder, trough, and wire mesh types, key components, and expert installation tips

### 'Electrical Cable Tray Layout Details.'

(SEE TRAY FLAT NOTES:- 1. FOR NOTES, REFERENCES DETAILS, SEE OSG. LD-264-ot1. CLASS IE ANO NON-CLASS IE CABLE TRAYS CHANNEL TYPE HAVE SELF-ADHERING 2. ro BOTH



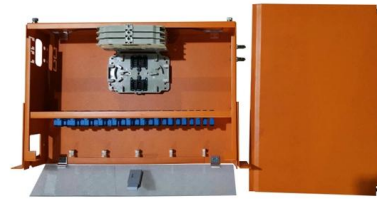
## Best Practice Guide to Cable Ladder and Cable Tray Systems

Cable ladders and cable trays should be mounted far enough off the floor or roof to allow the cables to exit through the bottom of the cable ladder or cable tray.



## Cable Tray Layout & Section (Electrical) , PMG Engineering

Explore the essentials of cable tray layout and section design in electrical systems, ensuring optimal cable management and support.



### ITER Cabling Handbook

If trenches contain only one row of cable tray, it is acceptable to have access to the cable tray from the ground level without the need for an excavated access space along the cable tray path.

### CABLE TRAY

Prior to installing cable in the cable tray, examine cable paths to ensure all areas are free of debris that may interfere with the cable's installation. The cable tray should never be used as a walkway.



### A Guide to Installing and Supporting Electrical Cable Trays

A professional guide to installing electrical cable tray systems per NEC Article 392. Covers support, securing cables, and fill calculations.



## CABLE TRAY SYSTEMS GUIDE

Material: Side Rails: Fitting side rails are I-beams with overall dimensions similar to straight tray sections. Rungs and Bottoms: Rung and Bottom designs are identical to similar straight cable tray



## Contact Us

---

For datasheets, pricing, or custom high-speed optical interconnect solutions, please visit:  
<https://www.syropy.com.pl>