

Cable Tray Safety Load Standards





Overview

IEC 61537 is the internationally recognized benchmark for metal cable tray systems. It applies to cable trays made of steel, stainless steel, aluminum, or other metallic materials. The standard ensures these systems can handle the physical and electrical loads they're exposed to. The mechanical and electrical characteristics, tests, certifications, overall quality management, recommendations mentioned in this technical guide only apply to our own cable management ranges and cannot under any circumstances be transposed to silicone, overheating or. Cable trays play a vital role in supporting electrical cables and wires in commercial, industrial, and utility installations. For proper installation, design, and maintenance, adherence to international standards is essential.



Cable Tray Safety Load Standards



Comprehensive Stainless Steel Cable Tray Price List

Standard configurations include ladder-type, perforated, and solid bottom designs, each addressing specific installation requirements and environmental conditions. The stainless steel cable tray price

Avoiding Mistakes in Instrumentation Cable Tray

Learn how to avoid common mistakes in instrumentation cable tray installation. Follow IEC standards and EPC best practices for safe, reliable

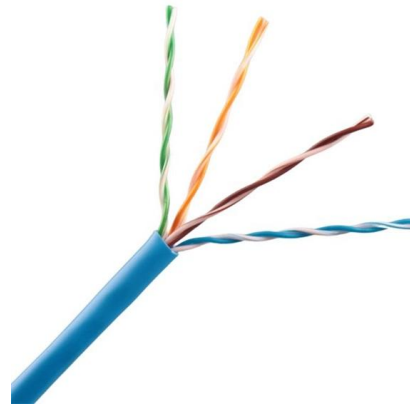


FactSheet

FactSheet Electrical Safety Hazards of Overloading Cable Trays According to the 2005 National Electrical Code® (NEC), a cable tray system is " unit or assembly of units or sections and

B-Line series Cable Tray Design Considerations

Our wind certification report provides you with list of acceptable B-Line series cable tray supports, fittings and covers based off of the environmental conditions, cable loading, and type of cable tray in your



The 2026 Snow Load Shock Forces an Immediate ASCE 7-22

The shift from older snow load maps to the new, more aggressive ground snow load provisions means that many existing Unistrut and cable tray support designs--often based on P1000/P1001 legacy

Load Tables , Cable Management , Metsec

Range of Load Tables for Metsec Cable Tray Systems for the mechanical and electrical services industry. For any queries, contact our team on +44 (0)121



IEC 61537 Testing: Ensuring Reliability in Cable Tray

This international standard outlines the requirements and tests for cable tray systems used for electrical installations. Whether you're a



Cable Tray Technical Guide A practical guide to product selection and

This guide for engineers and installers has been developed by ABB as a practical reference regarding cable tray characteristics, installation, and requirements.

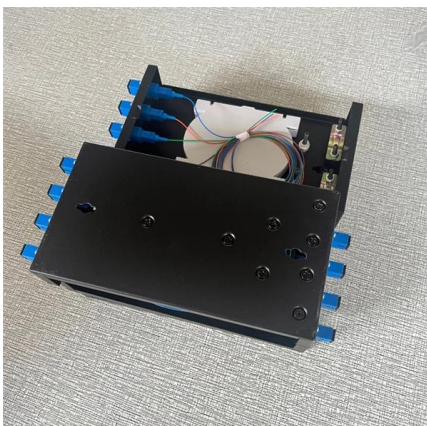


Cablofil Hot Dip Galvanised Steel Wire Cable Tray Support Rail 1m

Hot dip galvanised steel S-profile support rail for wire cable tray mounting. Back perforated for flexible and secure fixing, delivering corrosion resistance and 1 kN load capacity for industrial use.

Cable Tray SHIB NAL

SHIB 01-16-2008 This Safety and Health Information Bulletin (SHIB) is not a standard or regulation, and it creates no new legal obligations. The Bulletin is advisory in nature, informational in content, and is



Codes and Standards , Cable Tray Institute

This standard specifies the requirements for nonmetallic cable trays and associated fittings designed for use in accordance with the rules of the Canadian Electrical Code (CEC) Part 1, and the National



FRP Cable Tray: Benefits, Uses, and Buying Tips

Learn how to choose the right FRP cable tray for industrial projects, with tips on load, corrosion resistance, customization, and long-term value.



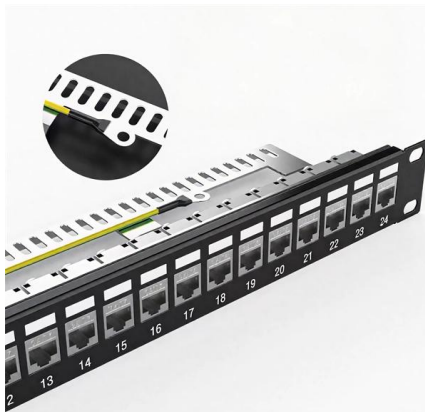
Understanding IEC 61537: A Comprehensive Guide to

When selecting cable trays, enterprises often prioritize performance metrics, particularly safe working load. But how are these safe working load data



What Tests Should Cable Trays Go Through? How to

The load-bearing test is also called the SWL (safe working load) test, which is to test the bearing capacity of the cable tray according to the standards



Why Cable Management and Segregation is Important for IT and

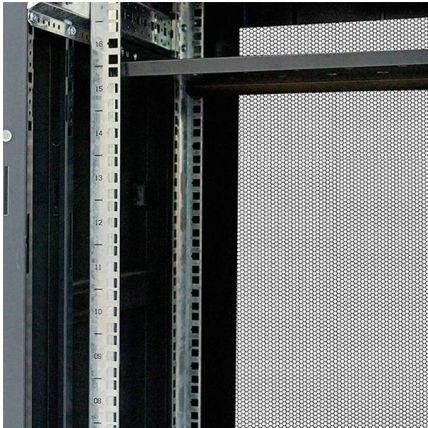
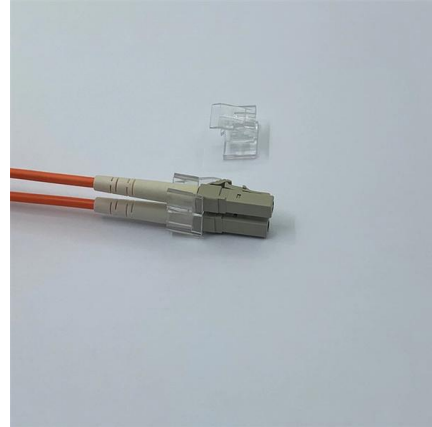
Insightful sharing on cable management and tray segregation. A clear and valuable perspective on system reliability, safety compliance, and signal integrity, especially for IT and electrical

Essential Cable Tray Standards: Your Guide



to Compliance & Safety

Design Considerations When designing a cable tray system, it's essential to consider factors such as load capacity, material selection, and environmental conditions. For instance, selecting stainless

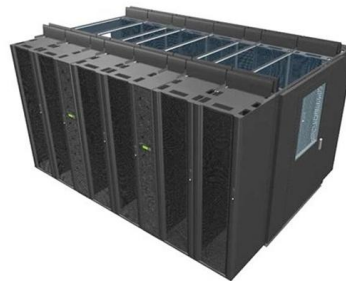


GUIDE CABLE TRAYS TECHNICAL

Specifies requirements for metal cable trays and associated fittings designed for use in accordance with the rules of Canadian Electrical Code, Part I and the National Electrical Code®

Hot-Dipped Galvanized Ladder Tray

Rigid, hot-dip galvanized Cope cable trays ensure safe, easy installation and meet NEMA VE-1 standards.



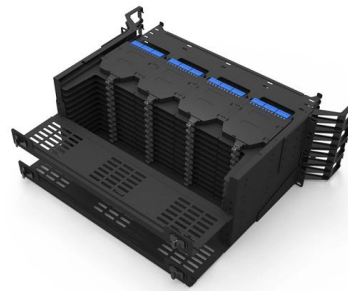
Unex Blog

Hier sollte eine Beschreibung angezeigt werden, diese Seite lässt dies jedoch nicht zu.



5 Golden Rules for Safe & Compliant Cable Tray Installation

Ensure safety and compliance in your cable tray installation. Discover the 5 golden rules covering NEC standards, load capacity, grounding, and support spacing.



How to Get Quick and Accurate Cable Tray Pricing

Learn how to get quick and accurate cable tray pricing for your projects. This guide covers new builds, renovations, and custom systems.

Understanding IEC 61537: A Comprehensive Guide to

IEC 61537 is a crucial international standard established by the International Electrotechnical Commission (IEC). The Chinese national standard GB/T 21762



Cable Tray Size Calculation for Project Engineers

Many construction regulations and safety standards specify cable tray sizes, particularly in terms of load capacity, heat dissipation area, and overall



Appendix 3F Cable Trays and Cable Tray Supports

Live load consists of a load of 250 pounds to be applied only during construction on the tray at a critical location to maximize flexural and shear stresses. This load is not combined with seismic loads.



Cable Tray Technical Guide A practical guide to product selection and

Cable Tray Technical Guide A practical guide to product selection and installation This guide for engineers and installers has been developed by ABB as a practical reference regarding cable tray

Best Practice Guide to Cable Ladder and Cable Tray Systems

The standard BS EN 61537 states that manufacturers must publish SWL (safe working load) details for their products, and specifies load test methods for determining the SWLs which can be supported by



Fire Rated Cable Tray, Heavy-Duty Cable Tray Manufacturer

Enhance workplace safety, minimize downtime, and improve aesthetics with the well-designed Fire Rated Cable Tray from NewReach. Ask for a Quote!



IEC Standard for Cable Tray: Complete Technical Guide

One of the most recognized frameworks globally is the IEC standard for cable tray systems. This standard ensures safety, durability, and performance



Advanced Cable Tray Load Calculator & BOM Generator , Shielden

Using our advanced cable tray load calculator is simple and ensures your electrical installation meets structural and safety standards. Follow these steps to generate your accurate Bill of Materials (BOM)



Contact Us

For datasheets, pricing, or custom high-speed optical interconnect solutions, please visit:
<https://www.syropy.com.pl>