

Cable Tray 2006 Standard Thickness





Overview

According to the 2006 standard, the maximum thickness of flat-bottomed steel cable tray plate is 2. The mechanical and electrical characteristics, tests, certifications, overall quality management, recommendations mentioned in this technical guide only apply to our own cable management ranges and cannot under any circumstances be transposed to silicone, overheating or. ies aluminum alloys (Aluminum Association designation) to manufacture cable tray. The alloys are selected for their mechanical properties, such as strength and hardness, as well as for their resistance to corrosion, particularly stress corrosion, cracking, and pitting manufactured using a. Perforation patterns and sidewall height should always be considered when calculating fill and heat dissipation.



Cable Tray 2006 Standard Thickness



B-Line series Cable Tray Design Considerations

For ladder or ventilated trough trays, the total sum of the cross-sectional areas of all the cables to be installed in the cable tray must be equal to or less than the allowable cable area for the tray width, as

Cable Tray Design and Standards Guide

1. The document outlines codes and standards that must be followed for design and construction of cable trays and their components. Standards listed include those

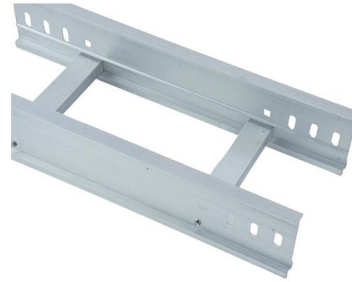


cable tray technical specifications

The European standard that lists the chemical composition of stainless steels which are subdivided in accordance with their main properties into corrosion resisting steels, heat resisting steels and creep

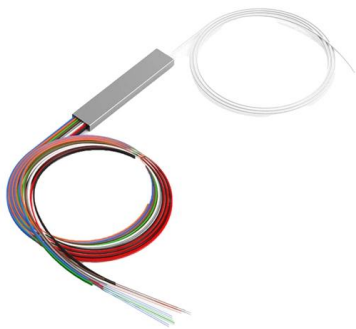
Cable Tray Technical Guide A practical guide to product selection and

A practical guide to product selection and installation This guide for engineers and installers has been developed by ABB as a practical reference regarding cable tray characteristics, installation, and



Cable Tray Dimensions Guide: Standard Sizes, Tray

In practice, cable tray dimensions are a system of interrelated measurements --width, depth, length, and material thickness--that directly affect



Outdoor Industrial Waterproof Aluminum Alloy Steel Ventilated Ladder

Outdoor Industrial Waterproof Aluminum Alloy Steel Ventilated Ladder Cable Tray High Quality for Power Station Construction High No reviews yet 100 sold Complies with EU standards Guangdong



Cable Tray Width, Dimensions and Specifications as per

Learn about cable tray width dimensions and specifications as per NEC standards. Understand types, sizes, materials, and installation guidelines for safe and





Wire Mesh Cable Trays Technical Information Detailed,

Wire Mesh Cable Tray Detailed Information: a. A job site, field adaptable support system primarily for low voltage telecommunication and fiber optic cables. These



Maximum and minimum thickness of cable tray?

According to the 2006 standard, the maximum thickness of flat-bottomed steel cable tray plate is 2.2mm and the minimum thickness is 1.0mm. The maximum thickness value of the cover

IEC Standard for Cable Tray: Complete Technical Guide

IEC Standard for Cable Tray: Complete Technical Guide The International Electrotechnical Commission (IEC) provides detailed guidelines for



cable tray technical specifications

Armorduct cable tray systems are usually assembled using M6 roofing bolts particularly for couplers, fishplates and connection to supporting framework. It should be noted that independent testing has





12-SDMS-06

4.1.2 The Metallic cable trays shall be manufactured in accordance with NEMA VE-1 standard and/or equivalent IEC standard. 4.1.3 Metallic cable trays shall be designed as a mechanical support for



IEC Standard for Cable Tray: Complete Technical Guide

All trays must undergo salt spray tests and coating thickness tests to ensure the coatings meet the durability levels required under the IEC standard for

CABLE TRAY

For Cable Tray Installers--This publication is intended as a practical guide for the proper installation of cable tray systems. Cable tray systems design shall comply with NEC Article 392, NEMA VE 1, and



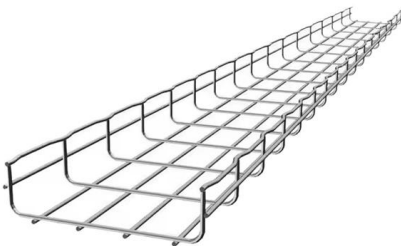
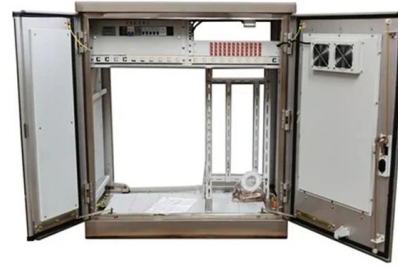
Cable Tray Dimensions Guide: Standard Sizes, Tray

We will first explain standard cable tray dimensions used across the industry, then examine how dimensions vary by tray type, and finally show how to



Cable Tray SHIB NAL

NEMA Standard VE 2-2006 addresses shipping, handling, storing, and installing cable tray systems; it also provides information on cable tray maintenance and system modification.



Cable Tray Size and Dimensions: How to Choose the

Learn how to calculate the perfect cable tray size and dimensions for your electrical project. This guide covers load capacity, fill ratios, and industry

12-SDMS-06

Cable tray sections, fittings and connected raceways shall be bonded properly using bonding jumper at both ends. The bonding jumper shall be bare copper conductor of 50 mm² size and 400 mm long.



CABLE TRAY

This standards publication was developed by the NEMA Metal Cable Tray and Nonmetallic Cable Tray Sections. Section approval of the standard does not necessarily imply that all section members voted



Cable Tray Specification Guide , Types, Materials, Sizes

Cable Tray Specification In the realm of infrastructure development, the efficient management of electrical conduits plays a pivotal role. This section delves into the intricacies of selecting and



GUIDE CABLE TRAYS TECHNICAL

In accordance with its continuous improvement policy, Legrand reserves the right to change the specifications and illustrations without notice. All illustrations, descriptions and technical information

cable tray system

ADVANTAGES OF CABLE TRAYS cable tray systems are manufactured in accordance with the precise standards laid down by the National Electrical Manufacturers Association (NEMA).



26 05 36 Cable Trays for Electrical Systems

If cable trays are sized for future cables, specify provisions for penetrations with sleeves through fire-rated partitions or use "repairable" firestop-sealing material.



Cable Tray Dimensions and Specifications as per NEC

Many electrical systems employ cable trays. They route cables safely & efficiently. NEC defines minimum cable tray size & electrical installation



Cable Tray Technical Guide A practical guide to product selection and

In designing supports for a cable tray system, consideration should be given to the loads associated with future cable additions and any additional loading that may be applied to the cable tray system (e.g.,



Product Specifications: CABLE TRAY

AS/NZS 4680:2006 FDG CABLE TRAY FDG Cable Tray is designed to continuously support cable systems including; Power, Data, and Audio Visual. A quick and easy system to install without the



Contact Us

For datasheets, pricing, or custom high-speed optical interconnect solutions, please visit:

<https://www.syropy.com.pl>