

Bolivia 19-inch chassis 800mm depth door-to-door shipping





Overview

The server rack is provided with two doors, tempered glass, adjustable rack rail depth, removable side panels, a hinged frame construction and cable knockouts on the front and back as well as on top. The SPR8842 is a professional 19" rack compliant to the ANSI/EIA RS-310D, DIN41491 and IEC60297 standards. The cabinet is designed and manufactured in compliance with the following international standards: These standards ensure full compatibility with all standard 19-inch rack-mounted equipment. What are the application scenarios of wall-mounted cabinets?

Wall-mounted cabinets are widely used in the. The combination of robust materials, good ventilation options and smart access via glass door and lockable panels makes this cabinet ideal for. This free-standing rack has been especially designed for use with Servers, Switches, AV Equipment, Security Systems.



Bolivia 19-inch chassis 800mm depth door-to-door shipping

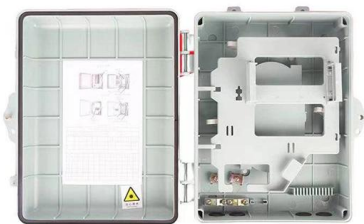


19" Server Rack 42U, 800mm deep

This 19" Server Rack measures 42U and has got a depth of 800mm. The server rack is provided with two doors, tempered glass, adjustable rack rail depth, removable

Server case rackmount chassis 19 inch IPC mini-ITX 2U

2U height miniITX IPC case compatible with 19" RackMatic rack cabinets. Internal bays: 4 x 3.5". Compatible with 2 mini ITX boards measuring 6.7 x 6.7 inches (17



Server Cabinet, Rack 19", 42U, floor standing cabinet,

A pre-equipped (two shelves, quadruple roof fan, power distribution unit) server cabinet with 42U working height, standing on castors, is the cheapest large-sized

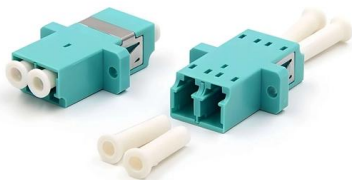
19 inch server cabinet 42U

Spacious 42U server cabinet 800x800 mm with glass door and excellent ventilation. Ideal for professional network installations in server rooms and data centers.



19" SYSTEMS

Our 19" enclosures comply with a large number of international standards which cover not only mechanical but also electromagnetic compatibility and vibration resistance.



Server Rack 19" 800x1000 42U Black Grilled Door

Server Rack 19" 42 U 800x1000 floor 80% gridded front door, with quick release hinges and handle with key lock; Removable blind side panels with at least two



TS IT Rack Guide Specifications

1.3 IT enclosure with perforated aluminum/sheet steel front door. Split, perforated sheet steel rear door, multi-piece roof plate for side cable entry on both sides, open base frame, without side panels.



Server case rackmount chassis 19 inch IPC ATX 4U

The most common are: - 450 mm - 600 mm - 800 mm - 900 mm - 1000 mm - 1200 mm Type 19-inch rack can find various types of 19-inch rack. Rack Mural



Bosch B36CL81ENG French Door Refrigerator with

Bosch 800 Series 20.5 Cu. Ft. Counter Depth 4 Door French Door Refrigerator 36-Inch Wide Glass Over Stainless Steel - B36CL81ENG

Server rack cabinet 19" 42U 800x1000x2000mm

RackMatic MobiRack 19" rack cabinet, 42U high, with external dimensions of 800 mm (width) x 1000 mm (depth) x 2000 mm (height). Manufactured from high



Serveredge 18RU 600mm Wide & 800mm Deep Fully

Serveredge 18RU 600mm Wide & 800mm De Serveredge CBN-18RU-68FS fully assembled server racks are a perfect solution for securely storing your standard



Server case rackmount chassis 19 inch IPC mini-ITX

Server case rackmount chassis 19 inch IPC mini-ITX 1.3U 1 x 5.25" or 4 x 3.5" depth 508 mm
REF: CK007 Specifications



19 inch network cabinet MHT197 with glass door

Spacious 42U server cabinet 800x800 mm with glass door and excellent ventilation. Ideal for professional network installations in server rooms and data centers.



Serveredge 42RU 600mm Wide & 800mm Deep Fully

Serveredge CBN-42RU-68FS fully assembled rack enclosure is a perfect solution for securely storing your high-density server & standard rack mount equipments in



SPR818

The 19" mounting profile with punched square holes for use with snap-in cage nuts in combination with the printed unit measurement indicators ensure an easy fitting

19" SYSTEMS



The 19-inch assembly system is designed in such a way that complete devices and equipment can be built up in a modular form. This means that in their electrical functions, various plug-in units are

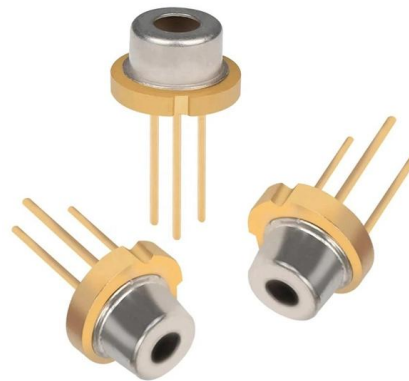


NavePoint 42U Server Rack Cabinet, 800mm depth,

The mounting rail depth is marked and adjustable in 10 mm increments between 6 and 21.5 inches deep. Glass front and French rear doors improve airflow. Quick

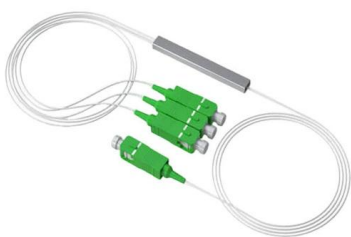
Gcabling 19inch SPCC Depth 800mm 42U Server Rack

Each cabinet is supplied with a detailed installation manual. In



SPR8842

The SPR8842 is a professional 19" rack compliant to the ANSI/EIA RS-310D, DIN41491 and IEC60297 standards. A cold rolled steel 2 mm thick frame and 1,2





Server Rack 19" 800x1200 42U Black Grilled Door

Solid floor-standing rack cabinet characterized by a sturdy structure with 2mm

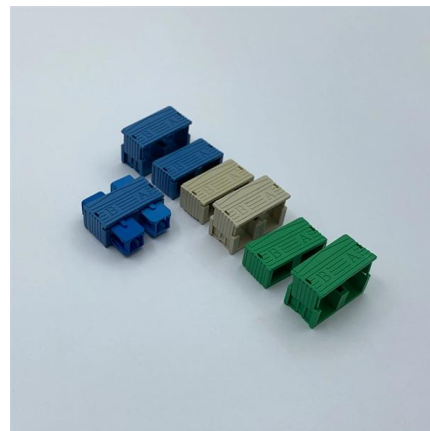


Atlas Chassis

Atlas Chassis DIMENSIONAL CHARACTERISTICS
Heights: 2U to 6U (or more depending on front)
Width: 19" (chassis width 429 ext.) Depths: 360 / 460 mm

Server Rack 19" 800x1000 42U Double Grilled Hinged

Server Rack 19" 42 U 800x1000 floor-standing cabinet Two front hinged doors in 80% perforated metal, with quick release hinges and handle with key lock Two



19" Server Rack 22U, 800mm deep

This 19" Server Rack measures 22U and has got a depth of 800mm. The server rack is provided with two doors, tempered glass, adjustable rack rail depth, removable



Gembird 19inch rack-mount server chassis 450mm black (ATX)

The Gembird 19-inch Rack-Mount Server Chassis is a robust and functional solution for housing server components in a standardized rack system. With a depth of 450 mm, this case provides ample space



19" 18U-47U 800mm Depth Fireproof Server Rack Cabinet with

19" 18U-47U 800mm Depth Fireproof Server Rack Cabinet with Vented Door in Stock CE RoHS Certified

Contact Us

For datasheets, pricing, or custom high-speed optical interconnect solutions, please visit:
<https://www.syropy.com.pl>