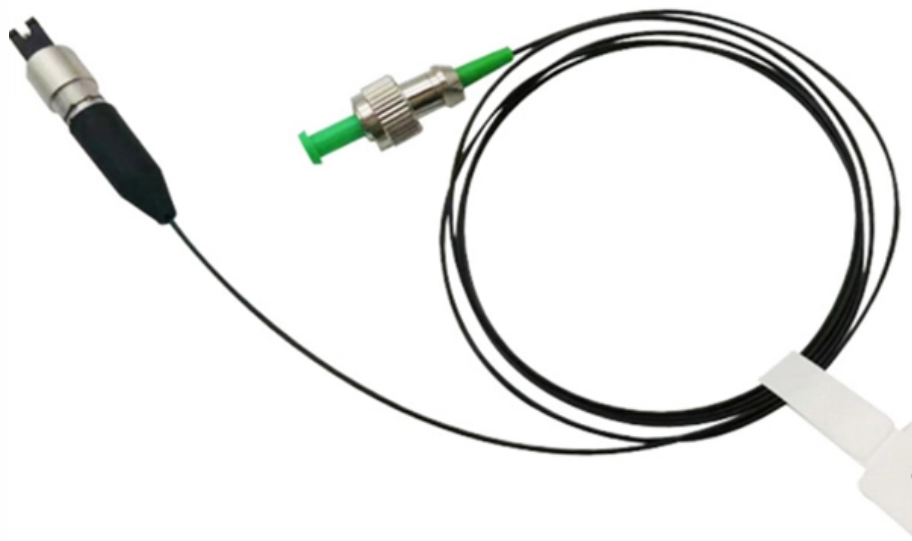


Blocking of transverse cable tray openings





Blocking of transverse cable tray openings



Plan, Install & Firestop Cable Penetrations

Firestop putties and pillow/bag/foam block systems represent a class of products designed to facilitate cable changes (retrofits). These products are packed into an opening rather than injected. Thus they

Best Practice Guide to Cable Ladder and Cable Tray Systems

Cable ladders and cable trays should be mounted far enough off the floor or roof to allow the cables to exit through the bottom of the cable ladder or cable tray.



Cable Tray SHIB NAL

Cable trays are not raceways, but they are treated as a structural component of a facility's electrical system. Cable trays are a part of a planned cable management system to support, route, protect and

Fire rated wall , If

Cable trays should not pass through a fire rated wall because the metal tray can conduct heat through the wall and may ignite materials on the other side. However, if the cable tray does pass through a



Essential Principles for Cable Tray Access Path Setup

Discover essential principles for cable tray access path setup. Learn about safety, convenience, and cost-effective design considerations for

Firestopping cable runs

Firestopping through concrete barriers, installing wall boxes and using cable trays are the most common problems in this area. Firestopping cable trays is



How to Fix Common Cable Management Issues using

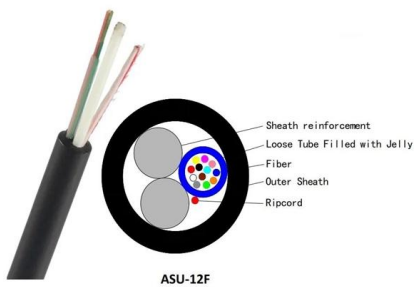
This comprehensive guide investigates the most frequent wire management challenges faced in real-world setups and demonstrates how the



12-SDMS-06



Ladder Type Ladder tray shall be prefabricated structure of two longitudinal side rails connected by individual transverse members (rungs) with openings in the longitudinal direction.

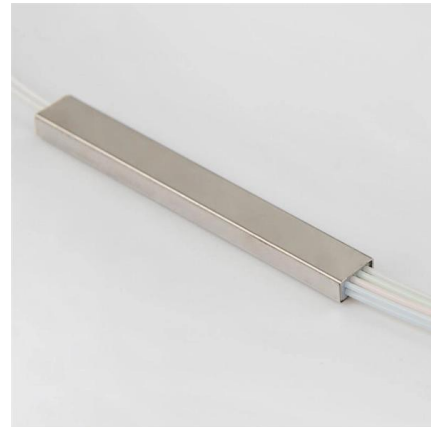


GUIDE CABLE TRAYS TECHNICAL

NEMA VE 1-2017 Specifies requirements for metal cable trays and associated fittings designed for use in accordance with the rules of Canadian Electrical Code, Part I and the National Electrical Code®

Types of Cable Trays - Purpose, Advantages,

Cable tray is alternatives to wire ways and electrical conduits, which completely enclose cables. Study types of cable trays, purpose, advantages.



Types of Cable Trays - Purpose, Advantages,

Cable tray systems are alternatives to wire ways and electrical conduit, which completely enclose cables. Cable trays are capable of supporting all types of

2005



Nearly every aspect of cable tray design and installation has been explored for the use of the reader. If a topic has not been covered sufficiently to answer a specific question or if additional information is



Cable Tray SHIB NAL

A generic guideline developed by the Cable Tray Institute indicates that cable trays should not be filled in excess of 40-50% of the inside area of the tray or of the tray's maximum weight based on the cable

Cable Tray Technical Guide A practical guide to product selection and

Cable tray installed in a hazardous location must contain only those cables that are appropriate for this type of environment as defined in Chapter 5 of the NEC.



Cable tray

In the electrical wiring of buildings, a cable tray system is used to support insulated electrical cables used for power distribution, control, and communication. Cable





CABLE ENTRY SEALS

Roxtec seals allow multiple cables or pipes through one opening. You eliminate the need for punching holes for cable glands and make it possible to reduce the size and cost of cabinets.

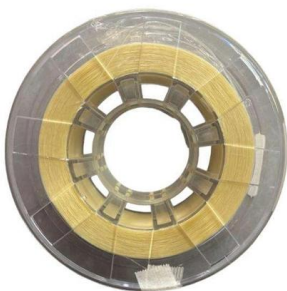


TERMS AND DEFINITIONS

Perforated Cable Tray A pre-fabricated metal structure consisting of one-piece, provided with slot openings for sufficient ventilation. It is generally used for moderate heat generating applications; the

Common Cable Tray Failures and How to Resolve Them

Learn about common cable tray failures, their causes, and practical solutions for ensuring the longevity and safety of your cable tray system, including



Guide to cable support systems

The systems are suspended from the ceiling with threaded rods, stand-off brackets allow raised floor mounting of cable trays, ladders and mesh cable trays. The universal systems comprise ceiling



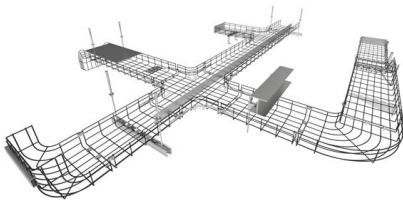
Cable Tray Spacing Standards for Installation and Safety

The Importance of Cable Tray Spacing in Electrical Infrastructure Cable tray spacing is a critical aspect of electrical infrastructure, influencing both



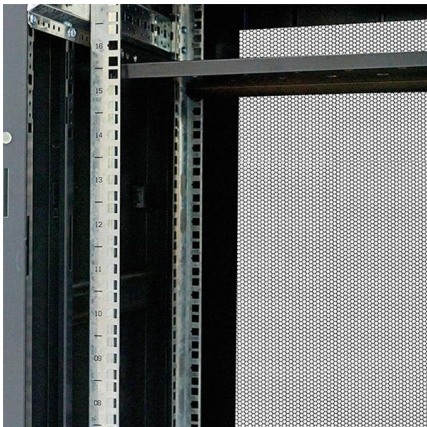
Beama Best Practice Guide , Installation Of The System , Cable

Cable ladders and cable trays should be mounted far enough off the floor or roof to allow the cables to exit through the bottom of the cable ladder or cable tray.



Technical Guidelines for Cable Tray Installation and

Use dedicated splice plates and bolts. Ensure firm electrical continuity through grounding jumpers at each connection point. Sharp edges or foreign debris inside



ITER Cabling Handbook

A necessary space must be devoted to workers on the cable trays under the false floor (cable tray modifications, pulling and crimping cables) to avoid walking on it.



Cable Tray Technical Guide A practical guide to product selection and

Cable Tray Technical Guide A practical guide to product selection and installation This guide for engineers and installers has been developed by ABB as a practical reference regarding cable tray

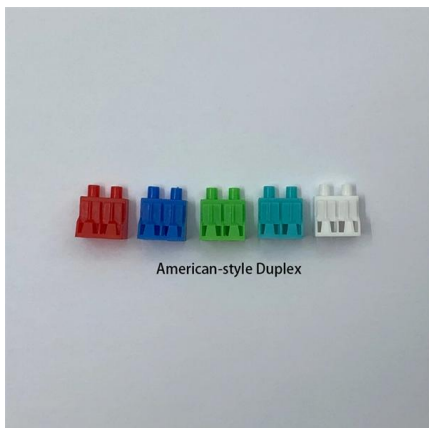


7 Types of Cable Trays: How to Choose the Right One

Cable tray systems are engineered support structures designed to route, support, and protect insulated electrical cables used for power distribution,

Designing Cable Tray Layouts for Industrial Facilities

Future Trends in Electrical Drafting and Cable Tray Design As the industrial and technological landscapes evolve, several trends are emerging in the design of



Mastering Cable Tray Installation , Step-by-Step Guide for a Seamless

Learn how to install cable trays correctly. Get the ultimate step-by-step guide on setting up a seamless and reliable cable management system.



Cable Tray Design and Sizing Guide

The document discusses several key factors to consider when designing a cable tray system, including: 1) The width and height of the tray, type of tray bottom (ladder, ventilated, or solid), and type of



Contact Us

For datasheets, pricing, or custom high-speed optical interconnect solutions, please visit:
<https://www.syropy.com.pl>