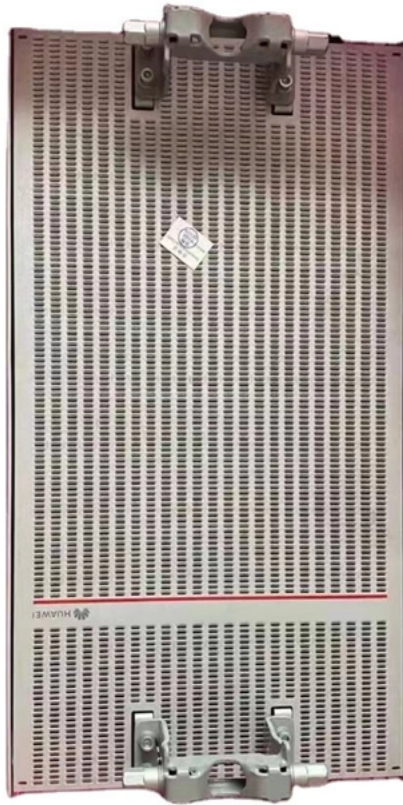


Bending Methods for Power Cable Trays





Bending Methods for Power Cable Trays



Bending Cable Tray

Students trading aid on how best to put an internal 90 degrees bend in steel cable tray. Includes a full demonstration on how bend steel cable tray using a crimping to. You can buy a manufactured

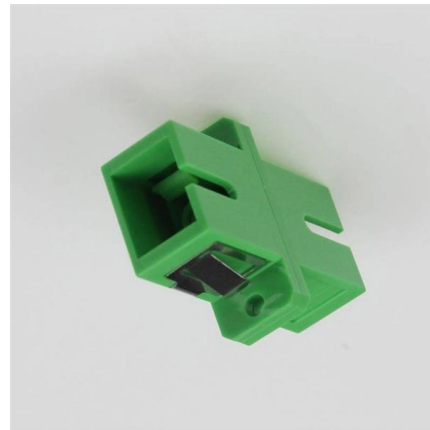


Types of Cable Trays - Advantages, Applications and Sizes

Explore the types of cable trays, their advantages, applications, and standard sizes. Learn how they improve cable management and support various industries.

Types of Bends in Wire Mesh Cable Trays: A Detailed

Different types of bends are essential to navigate obstacles, optimize space, and ensure the smooth and safe routing of cables in complex layouts. In



Exploring the Different Bending Types for Wire Mesh

Wire mesh cable trays have become a vital component in modern electrical installations, offering flexibility, durability, and easy customization for



Cable Tray Making Machine

Cable Tray Making Machine 12 Working Principle of Cable Tray Making Machines The working principle involves uncoiling the raw metal strip, guiding it through a series of progressing

How To Bend Cable Tray

Discover the best techniques and tools to bend cable tray easily and efficiently. Learn step-by-step instructions and tips from industry experts.



Bending Cable Tray

Includes a full demonstration on how bend steel cable tray using a crimping to. You can buy a manufactured 90 degree bend or make one on a cable tray bending machine but in this video I



Cable Tray Bend Calculator

For a 90-degree bend, ensure the tray's internal radius meets the cable's minimum bend requirement. If fabricating, mark the side rail at intervals based on the calculated arc length, cut V-notches, and



Cable Tray Design, Layout, and Overall Wiring Planning

Learn about effective Cable Tray Design and Layout for electrical systems. Our guide covers planning, material choice, safety,

Trunking Cutting Techniques Guide , PDF

The document provides instructions for forming various bends and joints in electrical trunking and cable trays. It describes: 1) How to mark and cut a right-angle



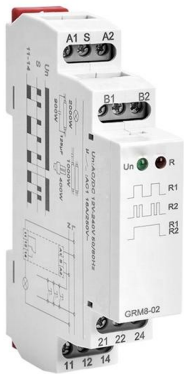
Cable Tray Technical Guide A practical guide to product selection and

Cable Tray Technical Guide A practical guide to product selection and installation This guide for engineers and installers has been developed by ABB as a practical reference regarding cable tray



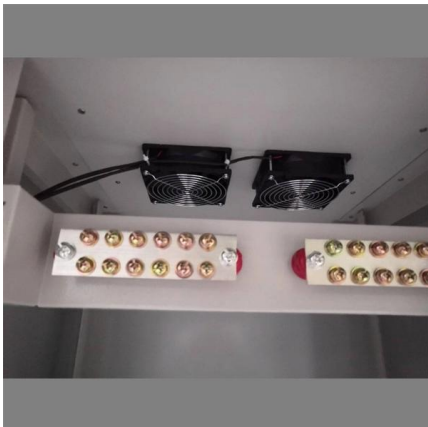
GUIDE CABLE TRAYS TECHNICAL

NEMA VE 1-2017 Specifies requirements for metal cable trays and associated fittings designed for use in accordance with the rules of Canadian Electrical Code, Part I and the National Electrical Code®



Installation Of Cable In Cable Trays: NEC, Safety

Cable installed in tray is subject to many of the same considerations as cable being installed in conduit systems. Correctly calculated data and adherence to the



POWER CABLE INSTALLATION GUIDE

Even though cable tray bends produce no multiplying effect, it is essential for heavier cables to include the force required to bend the cable around the sheave.



Types of Bends in Wire Mesh Cable Trays: A Detailed

Wire mesh cable trays are widely used in industrial and commercial installations to support and manage cables effectively. One of their greatest



IS 1255 (1983): Code of practice for installation and maintenance of

4.2.4 Installation Condition - Method of laying, installation details, such as, thermal resistivity, soil temperature, dimensions of trench, number, type, cross-sectional area and the load of all power



Cable Tray Systems: Requirements and Best Practices

Comprehensive guide to cable tray systems requirements: tray types, materials, loading, supports, bonding, routing, and best practices for safe electrical cable management.

IEC Standard for Cable Tray: Complete Technical Guide

IEC Standard for Cable Tray: Complete Technical Guide The International Electrotechnical Commission (IEC) provides detailed guidelines for



Types of Cable Trays - Purpose, Advantages,

Cable tray is alternatives to wire ways and electrical conduits, which completely enclose cables. Study types of cable trays, purpose, advantages.

Guide to cable support systems



The easily sep-arable wires and the bending capacity of the mesh cable trays enable the simple creation of bends, branches and exits. Four different mesh cable tray types are available, depending on the



Best Practice Guide to Cable Ladder and Cable Tray Systems

This guide covers cable ladder systems, cable tray systems, channel support systems and associated supports intended for the support and accommodation of cables and possibly other electrical

IEC Standard for Cable Tray: Complete Technical Guide

The IEC standard for cable tray recognizes multiple tray types depending on application and structure. Each type serves a different purpose in



B-Line series Cable Tray Design Considerations

Our wind certification report provides you with list of acceptable B-Line series cable tray supports, fittings and covers based off of the environmental conditions, cable loading, and type of cable tray in your



Best Practices for Cable Laying by EVIO

Cable Tray Considerations When laying cables in trays, ensure that the trays are curved appropriately at right angles. This will help maintain the



Technical Specification for Cable tray installation and cable laying work

Approval of IPR shall be obtained for site preparation and marking the cable tray routes and locations of cable tray support before proceeding with the erection and installation work.

Contact Us

For datasheets, pricing, or custom high-speed optical interconnect solutions, please visit:
<https://www.syropy.com.pl>