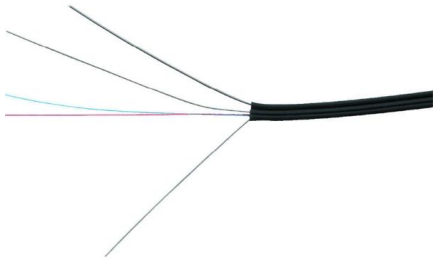


Belize 10kV Enclosed Busbar Plant





Belize 10kV Enclosed Busbar Plant



Busbar Systems , Power Busbars , EAE Electric

Power Busbar Systems are designed for the safe transport and distribution of electrical energy, ranging from 32A to 6300A, ensuring efficiency and reliability.

Technical Brochure Enclosure o Busbar Chamber System (BBS) o

Enclosed Fuse Switches (FSB) Technical Data for Fuse Switches (OS) Remark : Some fuse links limit these figures further. Starting current characteristics must be considered separately.

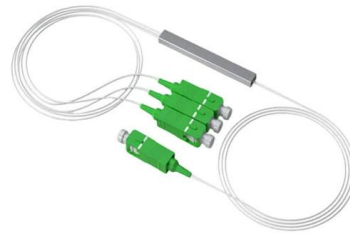


Non-Segregated phase bus duct capabilities

The metal-enclosed non-segregated phase bus runs are designed to withstand electrical and mechanical forces generated by momentary (10 cycle) and short-time (2 second) short circuit

Busbar Systems Power Industrial Enclosures

Busbar Is the Easy Choice to Replace Traditional Wiring The word is out. The future has arrived and it's busbar power distribution. The International Electrotechnical Commission issued a report in May of



Reliability evaluation for different power plant busbar layouts by

The configuration of one and half-breaker busbar which is usually used in power-plant substations has high reliability and flexibility. In this layout, three breakers are used for two feeders

Closed busbar systems -A unique power distribution

What is an Enclosed Busbar System? An enclosed busbar system is a highly efficient and organized method of electrical distribution, which involves the use of



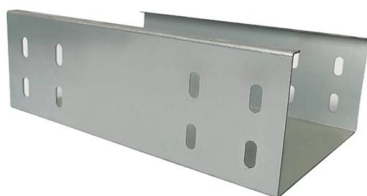
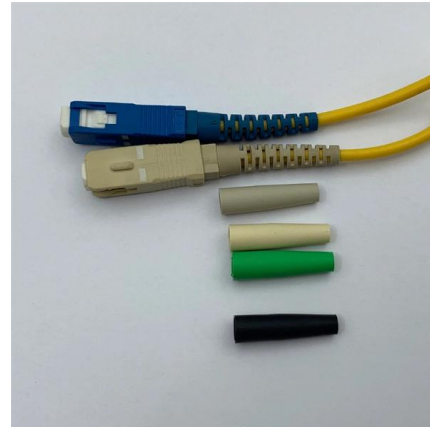
Belize

Belize has 9 power plants totalling 63 MW and 643 km of power lines mapped on OpenStreetMap. If multiple sources are listed for a power plant, only the first source is used in this



Flexible Busbar Solution for High Current Density Applications

Other common problems that also exist with rigid busbar systems can exist including poor installation, loose, missing or inappropriate hardware, and poor system design. The provision of the flexible bus



Flexible tiered busbar enclosure for high current application

The arrangement of busbars in this enclosure can be tailored, allowing a variety of configurations suitable for inflexible, higher-current carrying cables. These are

Busbar System Applications by Industry: Selection Guide for Engineers

Comprehensive guide to busbar system selection across power generation, industrial facilities, data centers, renewable energy, marine, and infrastructure sectors. Compare solutions,



Gas Insulated Switchgear portfolio

Gas-insulated switchgear (GIS) offers a more compact switchgear footprint (vs. air-insulated switchgear) consisting of high voltage components such as circuit-breakers, disconnectors, load interrupters and



Enclosed Busbar , 660V 400A-5000A Industrial Power

Enclosed Busbar System: 660V AC, 400A-5000A current capacity for power plants & industrial facilities. Achieve reliable power distribution with IP54 protection, CE



Daqo Group

The KYN28-12 armored metal-enclosed switchgear is suitable for 3-phase AC 50Hz / 3.6~12kV single busbar and single busbar section

Catalog Extract LV 10 · 10/2022

Our busbar systems for electrical installations offer a particularly easy way of fitting distribution systems with electrotechnical components. The modular design saves space, while quick assembly contacts



enclosed busbar system for steel plant

Introducing our high-efficiency busbar system for steel plants--engineered for superior conductivity and durability. Designed to optimize energy distribution, this system enhances operational efficiency while



Agrawal-28New

These busbar systems are like standard products for a manufacturer and are not required to be custom-built for every application except for variations in ambient conditions or special site requirement like



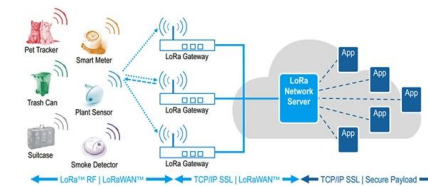
Metal-Enclosed, Non-Segregated phase

Metal-Enclosed, Non-Segregated phase 600 volts up to 5000 amperes 5 thru 38kV up to 4000 amperes INSULATION LAYERS The entire integrated insulbon system exlubits; Excellent Track Resistance



Busbars and Connectors in HV and EHV installations

In indoor medium-voltage (MV) and low-voltage (LV) installations--particularly where high currents and limited space coexist--busbars are often enclosed in metallic



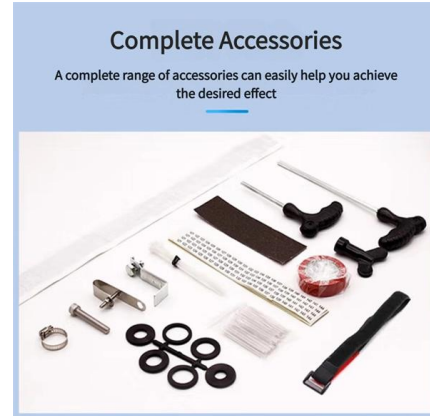
Belize Busbar Market (2025-2031) , Trends, Outlook & Forecast

The Belize Busbar Market includes the production and use of busbars, which are metallic strips or bars used for power distribution in electrical systems. This market is driven by the demand for efficient and





1 Scope This Specification and attached schedules cover the general design specification of single busbar indoor metal-enclosed switchgear for use on the 6.6kV or 11kV system of Electricity North



Belize Electricity Limited

Belize Electricity Limited (BEL) is the primary distributor of electricity in Belize, Central America. Aggregate energy sold was approximately 588.4 gigawatt hours (GWh) in 2019, up from 554.4 GWh

Enclosed Busbar Systems (Busbars)

Conductors are enclosed in a box body, ensuring maximum personnel safety. Thanks to this system with excellent conductive properties, it allows high current



BUS BARS

To ensure a continuous, potential-free bus bar system, an insulated connection sleeve is fitted between the sections, covering the controlled bus bar ends. A

Daqo Group



The KYN28-12 armored metal-enclosed switchgear is suitable for 3-phase AC 50Hz / 3.6~12kV single busbar and single busbar section power systems. It is used for



NSPB Metal-Enclosed, Non-Segregated Phase Bus duct

Heater electrical properties conductivity copper busbar (KS D 5530) as stan kable Tube may be used to insulate the cond are available upon request) Silver or Tin plating is available for conductor surface.

**47415320494E53554C41544544205357495
4434847454152**

In addition to busbars and connectors, GIS includes individual components for which separate standards and specifications apply. This document complements the requirements for these components



Selection of Medium Voltage Enclosed Busbar System in Power Plant

This special report firstly compares several types of medium voltage busbar systems, including enclosed busbar with shared enclosure, small phase-to-phase enclosed busbar, cable busbar, and insulated



Types 8DA10 and 8DB10 up to 40.5 kV

All high-voltage parts including the cable terminations, busbars and voltage transformers are metal-enclosed. Capacitive voltage detecting system to verify safe isolation from supply. Operation is only



Contact Us

For datasheets, pricing, or custom high-speed optical interconnect solutions, please visit:
<https://www.syropy.com.pl>