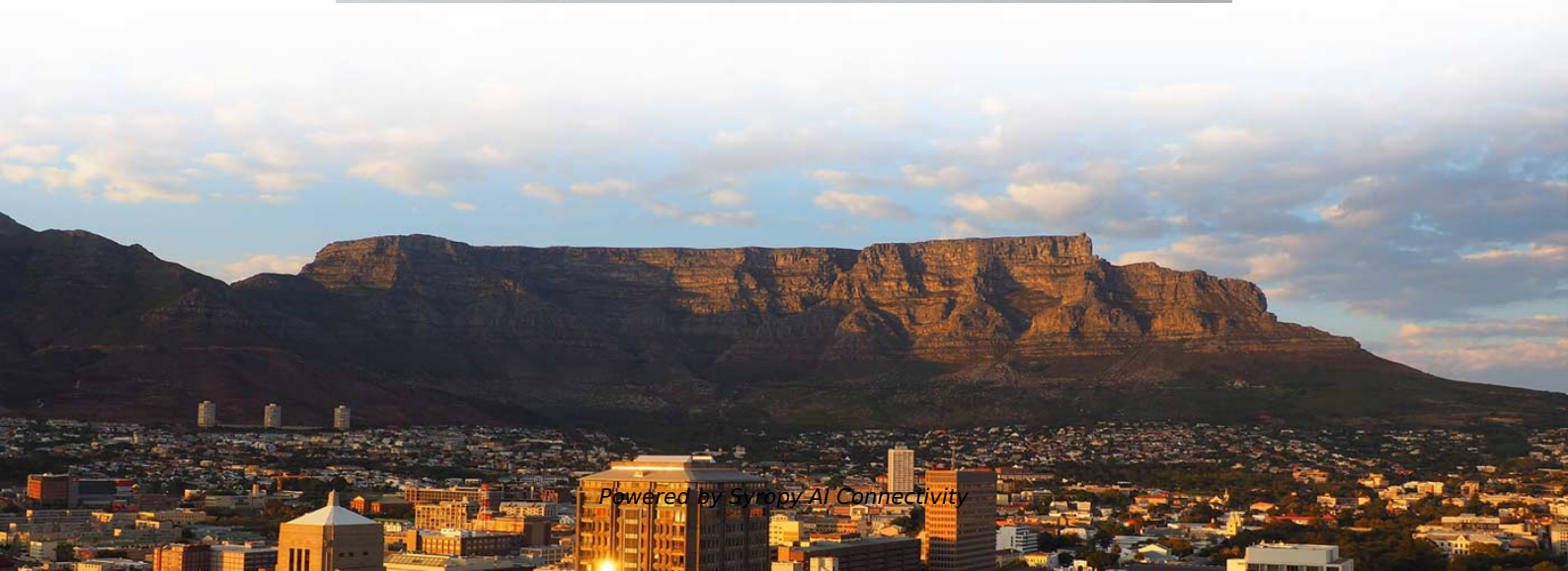
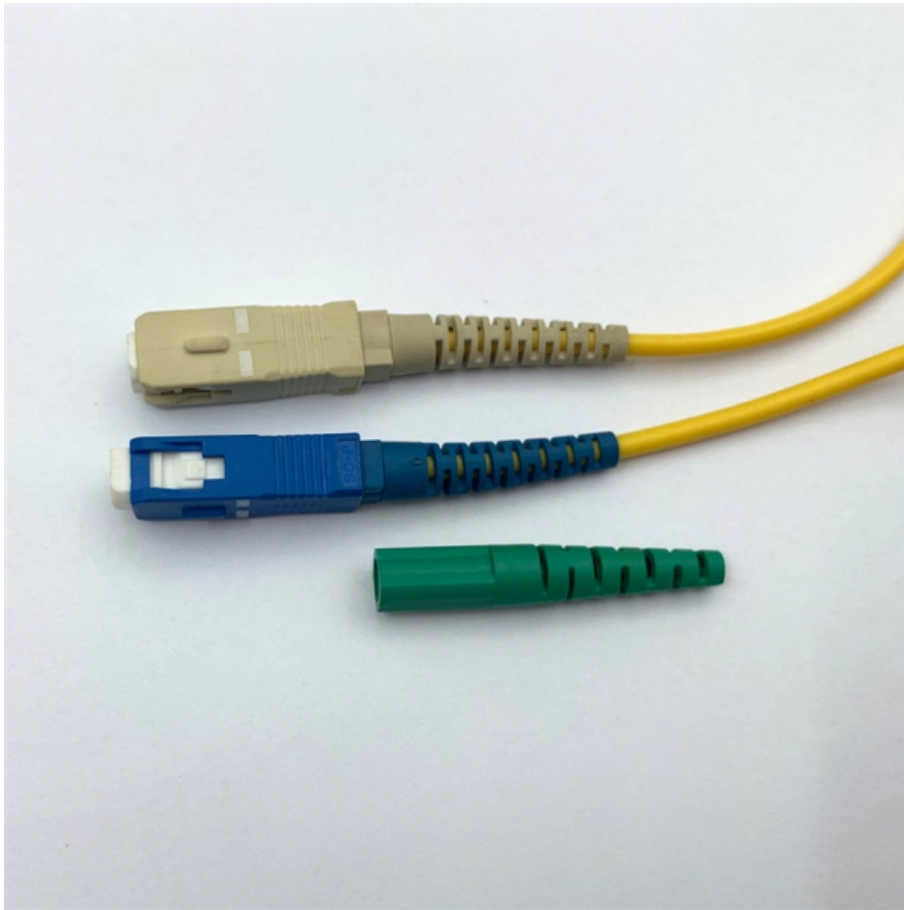


# **Bahamas Outdoor Explosion-proof Distribution Box**





## Bahamas Outdoor Explosion-proof Distribution Box



### Ex Local Control Stations & Distribution Boxes

Atex control stations, explosion protected control units and distribution boxes made stainless steel maritime grade AISI 316L or AISI 304L. Atex Delvalle provides a

### Terminal boxes , Junction boxes , Ex , Ex e , Ex d , ATEX , Explosion

Safely conduct, connect and distribute energy in hazardous areas with R. STAHL's terminal boxes. We offer bespoke, custom-made terminal boxes and terminal box combinations, as well as standard



Length:14.5mm  
Small-end inner diameter:2.0mm  
Large-end inner diameter:3.5mm  
Outer diameter:5.2mm



### Ex Distribution Boards & Enclosures , mlx-ex

What makes them different from standard distribution panels is their certified ability to operate safely in explosive atmospheres. These boards are engineered to prevent any sparks, heat, or faults from

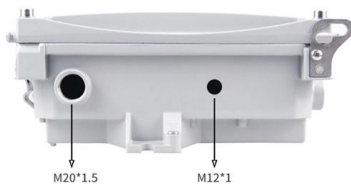
### Ex-Proof & Flameproof Enclosures & Junction Box , Supermec

Ex-Proof & Flameproof Junction Boxes & Enclosures Supermec ATEX Junction Box & Enclosures are designed to satisfy most of our clients' requirements for CONTROL explosion-proof and flameproof



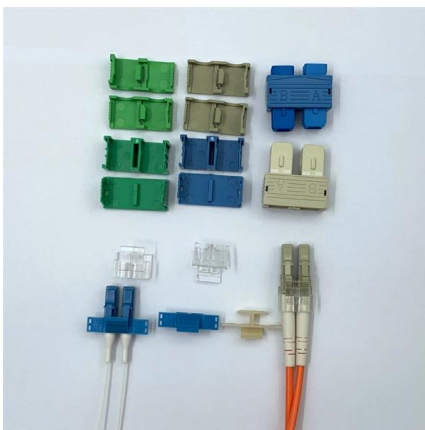
### Atex Certified Junction Boxes, Terminals, Sockets

These explosion proof junction boxes / terminal boxes, plugs, sockets & connectors are for use in explosive atmospheres in compliance with the ATEX 94/9/EC



### Circuit Breaker Distribution Box Electrical, Outdoor

MAKERELE IP65 waterproof distribution protection box, made of ABS plastic, and the use of plastic transparent cover is convenient to check the running status of



### Explosion proof distribution box

Types of Explosion-Proof Distribution Boxes An explosion-proof distribution box is a critical safety component engineered for use in hazardous environments where flammable gases, vapors, liquids,



## Energy Distribution

BARTEC offers one of the most extensive ranges of explosion-proof and substance-resistant components, devices, and systems for controlling, switching, and



### HRMD91 Explosion proof Distribution Box (Ex d IIB+H2)

HRMD91 Explosion proof Distribution Box  
Explosion protection to - IEC - CENELEC - NEC  
Can be used in Zone 1 and Zone 2 Zone 21 and Zone 22 Class I, Zone 1



### Distribution Boxes - WAROM Dubai , WAROM UAE

Showing all 7 results BXM (D)53 Series



### Waterproof Distribution Box Manufacturer , IP65/IP66

SELHOT's plastic power distribution boxes (plastic distribution boards) are impact and oxidation resistant, making them ideal for use in waterproof and dustproof





## BM (D)X-Series Explosion Protected Distribution Box

BM (D)X-Series Explosion Protected Distribution Box Explosion protection -IECEX (IEC) -ATEX (CENELEC,EN) -China Ex (GB) Application in hazardous area



## Expert Guide: Selecting Temporary Power Distribution Boxes

Industrial sites demand electrical systems that perform under pressure. Temporary power distribution boxes handle that role, routing electricity where it needs to go while keeping

## Explosion-Proof Distribution Boxes & Panels Manufacturer

The explosion-proof distribution box safely delivers power in hazardous zones (oil, gas, chemical plants) with rugged, spark-resistant casing--ATEX/IECEX, IP66 certified for reliable operation in explosive



## 6WAY EXPLOSION PROOF DISTRIBUTION BOXES,

FOR EXPLOSION-PROOF PLUG 16A, 32A CAN BE SELECTED. WRING IS FINISHED IN THE SOCKET BOX. REASONABLE ARRANGEMENT AND



## Box Enclosures & Distribution Panels

Home / Category Lightings Control Equipment  
Installation Equipment Cable Gland and Pipe  
Fittings AC & Ventillation System Distribution  
Boxes and Empty



## DISTRIBUTION BOARDS

These are available in a range of materials including Stainless Steel, GRP & Sheet Steel from IP42 (Indoor) to IP 66 (Outdoor) Applications.

## Explosion-Proof Distribution Box , Product Center

Explosion-proof distribution boxes are designed to safely control and distribute electrical power in hazardous environments, preventing ignition risks.



## Ex-Proof & Flameproof Enclosures & Junction Box , Supermec

All explosion-proof enclosures, lighting or power distribution boxes are manufactured using the latest technologies, both mechanical and electrical, using materials able to resist in most highly corrosive



## Outdoor Power Distribution Box Solutions:

Discover how J& HW Group's outdoor power distribution boxes deliver safe, weatherproof, and customizable solutions for modern industrial and



## Terminal Box/Explosion proof electrical equipment/global certification

KHJ offers a large selection of terminal boxes and junction boxes for wiring connection in explosion hazardous areas. They are certified according to the latest ATEX and IEC EX standards.

## Distribution Box Panel Explosion Proof: Keamanan

Spesifikasi BM (D)X-Series Explosion Protected Distribution Box adalah box panel dari Helon Indonesia untuk pendistribusian sistem listrik yang



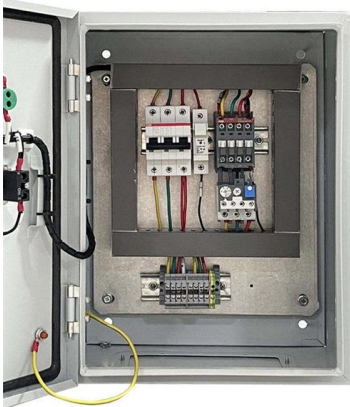
## Explosion Proof Enclosure

Explosion Proof Enclosure For hazardous area such as chemical industry or oil and gas installations, specialized of distribution panel or switchrack is needed to



## Explosion proof Power Distribution Panel Box

Power Distribution panel box - Hazardous locations for explosive gas mixtures: Zone 1 and Zone 2. Explosive gas mixtures: Class IIA, IIB, and IIC.



## Distribution Boxes

Distribution Boxes BXM (D)51 Series Explosion proof Distribution Boxes Lighting/Power (Ex d e IIB) Distribution Boxes BXM (D)53 Explosion proof

## Contact Us

---

For datasheets, pricing, or custom high-speed optical interconnect solutions, please visit:  
<https://www.syropy.com.pl>