

# **Ba aggregation switch set quota**





## Ba aggregation switch set quota

---

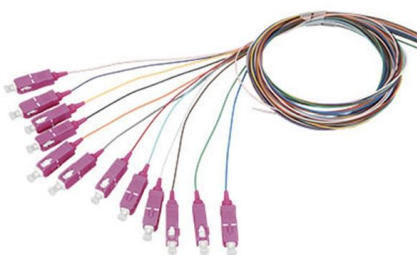


### Resource Quotas

Resource quotas are a tool for administrators to address this concern. A resource quota, defined by a ResourceQuota object, provides constraints that limit aggregate resource consumption

### How to edit a quota assignment in SAP Business Dat.

In this example, we update for SAP Datasphere, but you can change for SAP Analytics Cloud based on number of users and SAP Databricks on



### aggregated-devices , Junos OS , Juniper Networks

Description Configure properties for aggregated devices on the switch. Configure properties for aggregated devices on the router. Aggregate Ethernet links are logical interfaces defined on the

### Link Aggregation Configuration Commands

To configure the load balance after port aggregation, use the aggregator-group load-balance command. Use the negative form of this command to restore the default value.



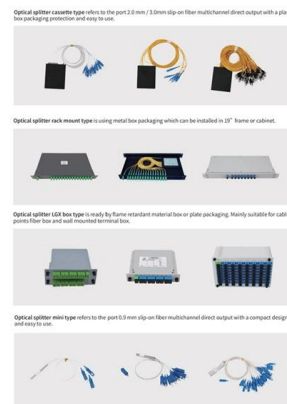
### Share Quota Across Subscriptions with Azure Quota

Learn how to share quota across Azure subscriptions with Azure Quota Groups to reduce the number of quota transactions.



### Cisco APIC Quota Management Configuration

Step 4 To configure a global Quota configuration, you can also navigate to System > System Settings, right-click Quota, choose Create Quota Configuration and perform the following steps: a) In the Class

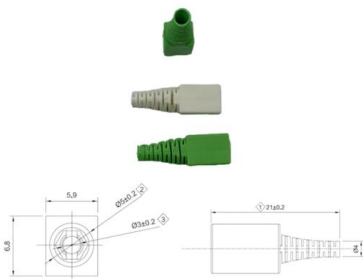


### What is Switch Aggregation, Its Role and Selection Advice

Switch aggregation refers to the concept of consolidating multiple access layer switches into a single aggregation layer switch in a traditional three-tier network design.



Hier sollte eine Beschreibung angezeigt werden, diese Seite lässt dies jedoch nicht zu.



### Demystifying Link Aggregation: How to Boost Network

Pretty straightforward right? Now for the fun stuff Link Aggregation in Action I regularly help various clients configure bonded NICs for higher

### Configuring a switch for link aggregation with a SAN

The vendor who is installing the equipment has requested that we configure the switch being used for what they are calling link aggregation. We will be using a Cisco 3560 Gigabit Ethernet



### Back Button

Hier sollte eine Beschreibung angezeigt werden, diese Seite lässt dies jedoch nicht zu.



### Solved: LIVEcommunity

To configure a port-channel for each firewall on the downstream switch without having to worry if the " Enable in HA Passive State " is checked or unchecked. If so what would be



### What Are Link Aggregation, LAG, and LACP?

Discover what link aggregation, LAG, and LACP are, how they work, and their benefits for network performance and reliability.

### Aggregation Switch: Increasing the Priority of Special Traffic

Aggregation switches set up stacks to implement device-level backup and increase the interface density and forwarding bandwidth. Before deploying QoS, ensure that the campus network is connected.

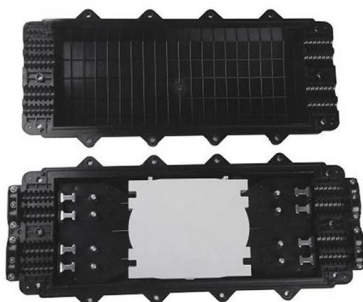
#### Pre-Terminated Patch Panel

- Multi-application support
- Flexible configuration
- Modular design



### Aruba-CX Switch

This article discusses how to configure link aggregation between Aruba-CX switches.

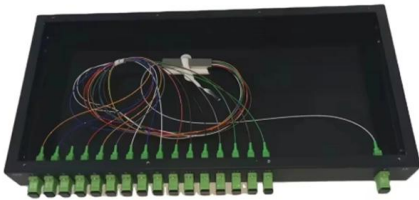


### What Is an Aggregation Switch and How to



### Choose?

What Is an Aggregation Switch? An aggregation switch is a network device that consolidates traffic from multiple access switches, wireless access



### Solved: Aggregated Planning

Regarding your question about time dependent quota, you have to define a time series keyfigure that should be assigned to the aggregate 9AMALO in your planning area. Then you have to

### Configure Quota Arrangement in SAP MM

Quota Arrangement : As we know about source list, as well as source list, we can use quota arrangement. We know source list is used for a source for



### Configuring a layer 2 static aggregation group

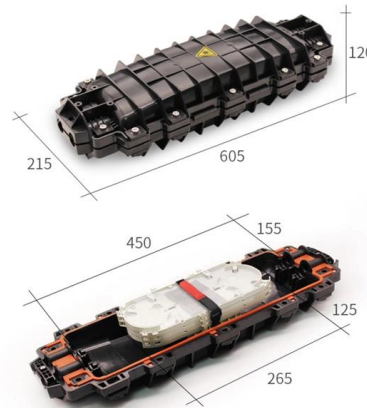
The range of the LAG interface ID is 1 to 256. While creating the layer 2 aggregate interface, the system automatically creates a layer 2 static aggregation group numbered the same. Set the operational

Is there a functional difference between a



### UniFi Switch Aggregation

It's aggregation in the sense that their other switches have 10G SFP+ uplinks, so if you wanted to connect a bunch together (aggregate them) you would need a switch that has that many SFP ports.



### PoE+ Series Switches Link Aggregation Configuration Guide

1. Configuring Port Aggregation This chapter describes how to set the port aggregation of the switch.

### How to configure Aggregated Ethernet Interfaces on Juniper (Link)

In this tutorial we will be showing you how to configure Aggregated Ethernet (ae) Interfaces on Juniper switches running Junos. Aggregated Ethernet Interfaces, which are not to be confused with



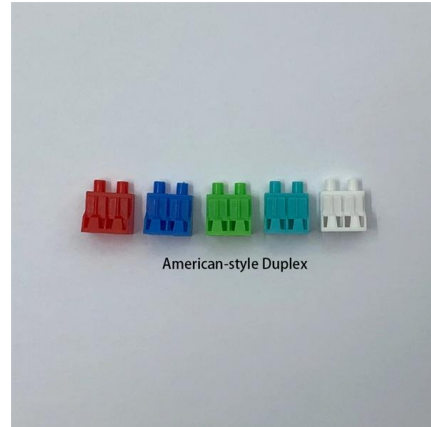
### Switch Engine v33.2.1 User Guide

The aggregation switches are configured to act as multi-function EAPS nodes to provide L2 connectivity services. After EAPS and L2 connectivity is configured, additional L3 routing configuration can be



## pybitcoin/pybitcoin/passphrases/english\_words.py at master · stacks

A Bitcoin python library for private + public keys, addresses, transactions, & RPC - stacks-archive/pybitcoin



### What Is an Aggregation Switch?

What is the difference between an aggregation switch and a core switch? An aggregation switch consolidates traffic from access switches, while a core switch acts as the backbone of the

## Contact Us

---

For datasheets, pricing, or custom high-speed optical interconnect solutions, please visit:  
<https://www.syropy.com.pl>