

Austrian Construction Site Electrical Distribution Box Cost Standards





Austrian Construction Site Electrical Distribution Box Cost Standard



Construction price index and construction cost index

The calculations are based on a basket of goods and services for the whole of Austria, which has been revised in 2020 to consider actual construction technologies, excluding VAT.

Requirements And Specifications For Installation Of

In flammable and explosive environments, explosion-proof distribution boxes should be selected and explosion-proof treatment should be carried out.



Electrical Distribution Boxes for Power Distribution

The goals of the appointment include the specification of the distribution box, the definition of the tender text and a cost estimate. But we will also talk about the

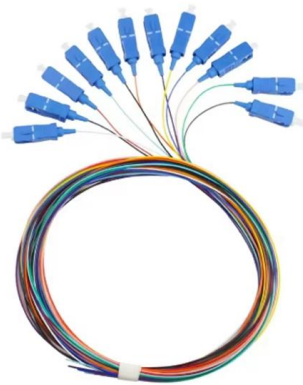
Electrical Installations Certification , SGS Austria

Whether you are a manufacturer or operator, you need to ensure cost-effective and safe use of your electrical installations and power plants. Our electrical installations certification services help you to



Temporary Power Distribution Boxes for Electrical

Temporary power distribution boxes for flexible electrical installation. Robust solutions for construction sites, events and temporary energy infrastructure.



Electrical system construction & switch cabinet construction , RHG

Everything from our own production "Made in Austria" We are your No. 1 in switch cabinet and electrical system construction in Austria: Low-voltage main distribution boards up to 6000A in accordance with



Construction cost index

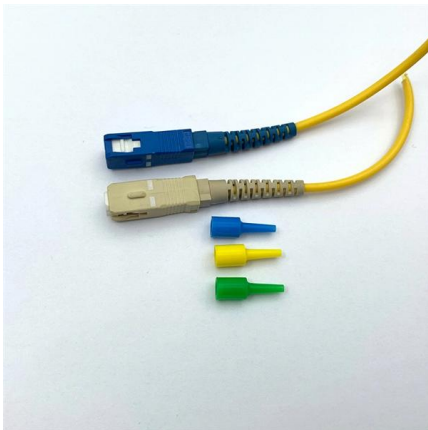
The index is calculated for residential buildings as well as for the three civil engineering sectors: road construction, bridge construction and other civil





Power supply on the construction site

A site power distribution board is usually an electrical distribution box equipped with various sockets to provide power for different equipment and machinery. A construction power distribution box may also



WALTHER-WERKE: Construction site power distributors

Full range of construction site power distributors
The full range comprises connection cabinets, connection distributors, main and group distributors, distributor and terminal distributor cabinets. The

Distribution boards components

Distribution boards (generally only one in residential premises) usually include the meter (s) and in some cases (notably where the supply utilities impose a TT earthing system and/or tariff



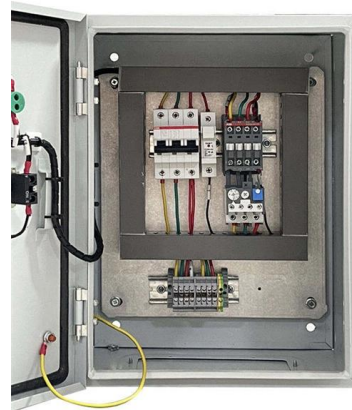
WASIR_ -_WA_Service_and_Installation_Requirements_

Foreword Welcome to this Sixth edition 3rd revision of the WA Distribution Connections Manual, now known as the Western Australian Service and Installation Requirements (WASIR).



A thumbnail guide to construction in Austria

This Q& A covers the essential legal and practical considerations surrounding construction law in Austria.



Electrical Installations Construction and Demolition Sites

Electrical Work on construction and demolition sites is also subject to the terms of the Occupational Safety and Health Act 1984 and the Occupational Safety and Health Regulations 1996, which are

WHS Standards Spotlight: Electrical installations for

The development of emergency procedures to deal with electrical incidents. AS/NZS 3012:2019 - Electrical installations for construction and



Current topics and issues , Austrian Standards

Austrian Standards is your first port of call for the development of standards and access to practical knowledge. You'll find all the latest key topics here.



Construction site

Mobile distribution boxes (solid rubber or thermoplastic) Mobile power distributors for construction sites (metal) Compact distributors Cable reels and extension cables Mobile personal protection



Distribution Box Cost Guide 2024: Comprehensive Pricing, Features

Discover complete distribution box cost analysis including pricing factors, advanced features, safety benefits, and smart technology innovations. Get expert insights on ROI, installation costs, and long

Requirements for distribution box at construction site

2? The rated value and action setting value of the main distribution box shall be compatible with the rated value and action setting value of the branch switch. 3? The electrical components and leakage



Information and advice

The OIB offers comprehensive advice and information on the provisions applicable in Austria for the use of construction products, technical construction regulations and assessment methods for the



CONSTRUCTION SITES

Range of construction site boards complying with the CEI 64-8/7 Standard for applications on construction and demolition sites. The directives of CEI 64-8/7 specify that boards for electricity



STAINLESS STEEL WIRE MESH

- Long-lasting and durable
- Comprehensive specifications
- Customized non-standard products



Distribution Standard

1 Introduction This Distribution Design Standard for Building Type Substations and Switching Stations contains the approved design requirements and process considerations for the design of building

Standards

Standards (-> oesterreich.gv.at) apply in technical fields (e.g. construction, mechanical engineering, electrical engineering) and in almost every aspect of daily life. They cover areas ranging from the



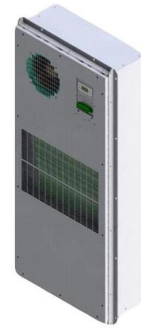
Electrical Distribution Boxes for Power Distribution

Electrical distribution boxes for modular power distribution and installation. Flexible distribution solutions for industrial and building electrical infrastructure.



Electrical Installations: Wiring Rules , Building It Right , HIA

Section 7: deals with special electrical installations with specific reference to safety services, electricity generation systems, protection by



Electrical Distribution Solutions for Prefab Houses

Explore the latest trends in prefab construction, compare regional electrical standards and distribution box requirements, and learn practical tips for

Microsoft Word

GENERAL Electrical installations must comply with the current electricity standards in the host country and canton (Switzerland and Geneva) and must comply with the applicable requirements, rules and



Key Points Of Installation And Collocation Of Distribution Box In

The power distribution system at the construction site shall be distributed in different levels. The main distribution box (or distribution room) shall be set up.



Electrical standards, rules and notes , NSW Government

Essential resources for the electrical industry including wiring rules, advisory notes, compliance requirements and technical guidance.



Electrotechnical standardization

According to § 16a and § 19 Electrical Engineering Act 1992, the OVE is the official national electrotechnical standardization organization and is therefore the Austrian member of CENELEC and

Construction site

PCE specialises in the production of CEE industrial plugs and sockets, earthing contact plugs and sockets and supplies a complete range of rubber, metal and plastic distribution boxes.

Product Catalog



Contact Us

For datasheets, pricing, or custom high-speed optical interconnect solutions, please visit:
<https://www.syropy.com.pl>