

Attenuation Measurement of Single-Mode Optical Cable





Overview

IEC 60793-1-40:2024 establishes uniform requirements for measuring the attenuation of optical fibre, thereby assisting in the inspection of fibres and cables for commercial purposes. Four methods are described for measuring attenuation, one being that for modelling spectral attenuation: -method D:. This document outlines the specifications for a single-mode optical fiber and cable designed for use around the 1310 nm zero-dispersion wavelength, suitable for both the 1310 nm and 1550 nm regions, and compatible with analogue and digital transmission. ITU-T and IEC have implemented multiple changes to their respective documents regarding Single Mode Fiber (SMF) since the last IEEE document was published. Attenuation in fiber optics is the gradual loss of light signal strength as it travels through a fiber cable.



Attenuation Measurement of Single-Mode Optical Cable



Understanding Signal Attenuation in Fiber Optics and

Attenuation in optical transceivers weakens signals. Manage loss by checking cables, cleaning connectors, and using proper fiber tools.

The FOA Reference For Fiber Optics

In order to test multimode fiber optic cables accurately and reproducibly, it is necessary to understand modal distribution, mode control and attenuation



Understanding Fiber-Optic Cable Signal Loss, Attenuation, and

To determine the power budget and power margin needed for fiber-optic connections, you need to understand how signal loss, attenuation, and dispersion affect transmission. The uses

Recommendation ITU-T G.652 (08/2024)

This document outlines the specifications for a single-mode optical fiber and cable designed for use around the 1310 nm zero-dispersion wavelength, suitable for



Journal of Optical Communications

Topics Optical communications with guided waves Fibers: Theory of single-/ multimode step-/ graded-index fibers; theory of properties (dispersion,

Single -mode and multi -mode fiber attenuation

The attenuation coefficient is measured in decibels per kilometer (dB/km) and is determined by several factors, including the type of fiber used in



Guidelines Corning Recommended Fiber Optic Test

n-optical. Optical documentation includes link attenuation, component loss, and distance readings (fro an OTDR). Non-optical documentation includes cable route diagrams, splice plans, connector



Polarization-Maintaining Single Mode Optical Fiber

Thorlabs offers both PANDA and Bow-Tie Single Mode Polarization-Maintaining (PM) fiber. These two fibers are named based on the stress rods used. Stress rods run



Fiber Attenuation Coefficient

Fiber attenuation coefficient is defined as a measure of how much optical power is lost per unit length of optical fiber, primarily due to factors such as absorption, scattering, and radiation losses.

Choosing the Right Optical Time Domain Reflectometer (OTDR)

Choosing the Right Optical Time Domain Reflectometer (OTDR) This white paper provides key information about OTDRs and guidance to newcomers in the telecommunication fiber optic market



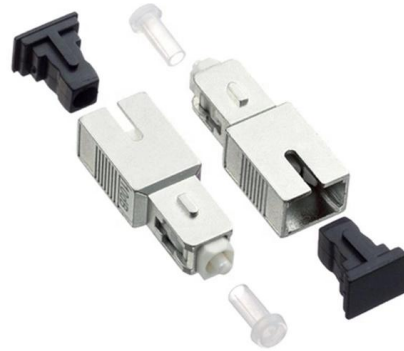
What Is Attenuation in Fiber Optics and How Is It Measured?

Attenuation causes light to weaken as it travels through fiber optic cables. Learn why it happens, what affects it, and how engineers measure and manage it.



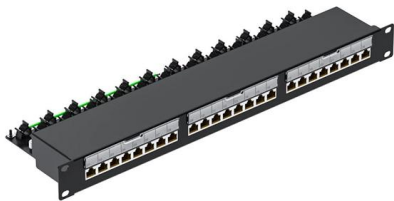
Types of Electrical Wires and Cables

Different Types of Electrical Wires and Cables
Electrical cable and wires are considered as a same thing. In fact they are quite different. A wire is made of a



How to Choose the Best 12 Core Fiber Optic Cable: A Complete

Key Features and Specifications to Evaluate To make an informed decision when shopping for a 12 core fiber optic cable, assess these technical parameters: Attenuation (Insertion



Optical Fiber and Cable Characteristics

Storyboard ITU-T and IEC have implemented multiple changes to their respective documents regarding Single Mode Fiber (SMF) since the last IEEE document was published. These have included:



(PDF) Optical Power and Fiber Attenuation Measurements

Dispersion penalty has been investigated widely in 1550 nm fiber-optical links transmitting different kind of signals. However, only few papers were



Fiber-optic cable

A fiber-optic cable, also known as an optical-fiber cable, is an assembly similar to an electrical cable but containing one or more optical fibers that are used to carry



Optical Fiber Accessories 1-50km/roll Bare Optical Fibre G652D

Product Usage: Using optical time-domain reflectometer (OTDR) measurement fiber, sometimes encounter situations very short fiber optic link. When measuring short fiber links often get large



TIA-455-78

This part of IEC 60793 establishes uniform requirements for measuring the attenuation of optical fibre, thereby assisting in the inspection of fibres and cables for commercial purposes.



Basic structure of an optical fibre (a) as modified from

The attenuation coefficient (?) was measured as a function of the laser input power (Pin) and the optical fiber length. The obtained results show that the power





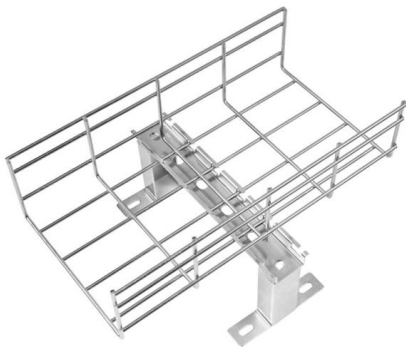
Single-mode optical fiber

In fiber-optic communication, a single-mode optical fiber, also known as fundamental- or mono-mode, is an optical fiber designed to carry only a single mode of light



IEC 60793-1-40:2024 , IEC

IEC 60793-1-40:2024 establishes uniform requirements for measuring the



Fiber Insertion Loss and Return Loss: A Complete Guide

You will get a new value, and the difference between the two values is the insertion loss of the fiber cable. This attenuation is inevitable, so the smaller



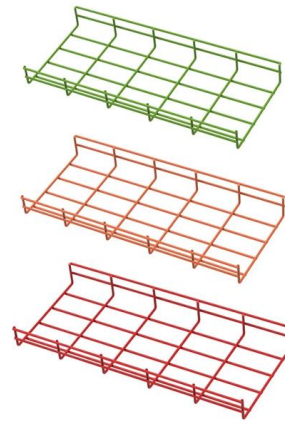
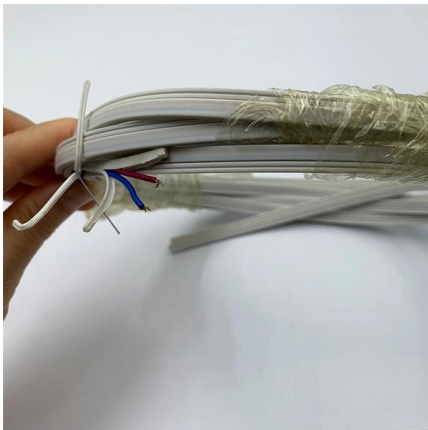
Performing Fiber-Optic Cable Attenuation Measurements: A Tutorial

Measuring attenuation in a fiber-optic cable is a vital ingredient to obtaining the maximum performance from a system designs. But, for designers, just starting to work in the fiber-optic design



Optic Power Meter KPM-35 FTTH Fiber Cable Tester And Singlemode

Its resolution of 0.01 dB guarantees precise readings for effective fiber diagnostics 4. ****Light Source Compatibility****: Paired with the Singlemode Fiber Optical Light Source KLS-35, this Optic Power

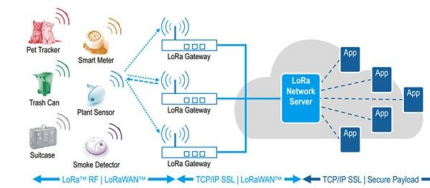


Fiber Optic Terminology & Definitions , Fiber Terms Guide

As fiber optic cables pass data, some of this data is naturally lost as it moves across great distances. How much optical power is lost is expressed as attenuation.

Calculate the Maximum Attenuation for Optical Fiber Links

This document describes how to calculate the maximum attenuation for an optical fiber. You can apply this methodology to all types of optical fibers in order to estimate the maximum distance that optical



IEC 61280-4-2:2024

IEC 62180-4-2:2024 is applicable to the measurements of attenuation and optical return loss of an installed optical fibre cabling plant using single-mode fibre. This



Calculating Fiber Optic Loss Budgets

Calculating Cable Plant Link Loss Budget Loss budget analysis is the calculation of a fiber optic cabling system's estimated loss performance characteristics.



The FOA Reference For Fiber Optics

Designers of fiber optic cable plants and networks depend on these specifications to determine if networks will work for the planned applications. For the purposes of

Contact Us

For datasheets, pricing, or custom high-speed optical interconnect solutions, please visit:
<https://www.syropy.com.pl>