

Assemble the lightning protection distribution box





Assemble the lightning protection distribution box

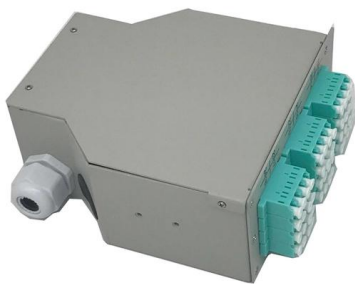


Surge protection box for PV

DESCRIPTION Complete DC surge protection wall distribution box SPD-PV-21 will provide the necessary protection before a lightning strike for your photovoltaic

The installation requirements for the distribution box

Learn how to install a distribution box safely and correctly. Covers wiring, placement, standards, and expert tips for a compliant setup.



Lightning protection specification of distribution box

For lightning protection of distribution box transmission line, reasonable lightning protection methods shall be adopted through technical and economic comparison

Surge protection device wiring in single phase distribution box

It protects electrical installations against direct lightning strokes. It can discharge the back-current from lightning spreading from the earth.



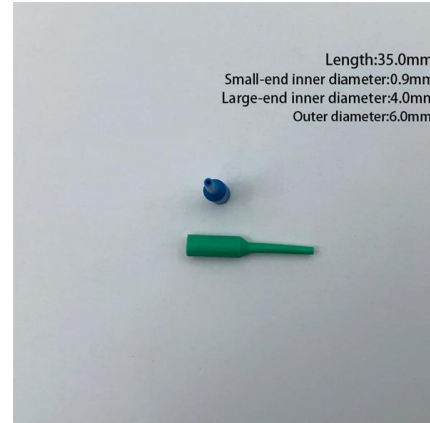
INSTALLATION MANUAL REMOTE POWER SYSTEM:

Ensure the capacity of the existing power distribution system meets the load requirements for the new installation, including inspection of wiring integrity and confirm the branch circuit voltage matches the



AC Surge Protection Device SPD Installation for Distribution Box

3-phase AC Surge Protection Device SPD Installation for Distribution Box, Switchgear, Cabinets, Industrial and Commercial more.



Distribution Boards

Distribution boards, often referred to as electrical panels or breaker boxes, serve as the nerve center of any electrical system. Here we explore the crucial parts of a distribution board and gain insights into





Lightning/Surge Protection Box, Column Surge Box Protector

The lightning protection box is a kind of lightning protection equipment, which is mainly installed in the power distribution room, power distribution cabinet, AC power distribution panel, switch box, and



TECHNICAL HANDBOOK

This handbook is written to assist in the understanding of the IEC 62305 series of lightning protection standards. This guide simplifies and summarizes the key points of the standards for typical

TECHNICAL HANDBOOK

Design standards are those used by the lightning protection designer or installer to determine the type and placement of the lightning protection system. Component standards are those used by the



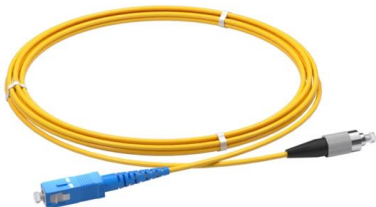
Lightning protection installation

What does a lightning protection installation consist of? A lightning protection system is nothing more than a network of metal wires that are installed



Lightning Protection Measures for Substations and

Learn about essential lightning protection measures for substations and transformers, including the use of lightning rods, surge arresters, and



Power Distribution Box

This manual contains important instructions for Power Distribution Box that should be followed during installation, operation and maintenance of the Power Distribution Box to protect the safety of the

CN110912003B

The invention relates to a distribution box, in particular to a lightning-proof distribution box, which comprises a distribution box, a sliding door, mounting rails, mounting frames, a wiring mechanism, a



Intelligent power distribution box- Intelligent power distribution box

Intelligent monitoring: Intelligent power distribution surge protection box has intelligent monitoring function, operation of graphic visualization intelligent monitoring means, lightning flow monitoring,



Where is the surge protective device installed in the distribution box

We will explain the assembly of the surge protector in the power distribution cabinet. The power distribution cabinet is usually equipped with air switches, leakage switches, fuses, etc. to control the



Lightning protection guide

Just like its predecessors, this edition of the lightning protection guide offers assistance in installing professional lightning protection systems in line with the very latest standards.

Distribution box surge protector: an important part of lightning protection

In areas with frequent lightning strikes, electrical equipment is easily damaged by lightning strikes. To reduce the damage caused by lightning strikes, the surge protector in the



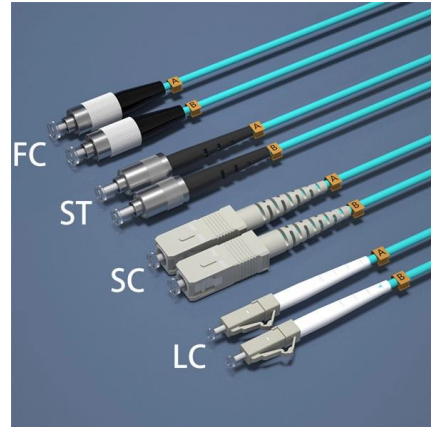
TRSX Lightning Protection Box

Product introduction TRSX series power lightning protection box is mainly used for weather, transportation, post and telecommunications, computer network, power

Type2 TRSX-20 Lightning Protection Box , Surge



TRSX series power supply lightning protection boxes are mainly used in meteorology, transportation, post and telecommunications, computer networks,



Lightning protection system installation , INGESCO

How to properly install a lightning protection system. Basic guide for external lightning protection installation.

Lightning Protection Guide

A lightning protection system comprising external lightning protection (air-termination system, down-conductor system and earth-termination system) and internal lightning protection (lightning



Power Lightning Protection Boxes

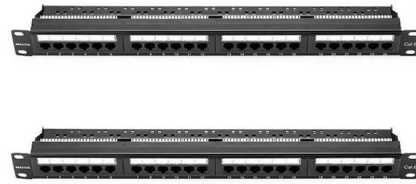
Types of Power Lightning Protection Boxes A power lightning protection box is a critical component in electrical systems designed to safeguard sensitive equipment from transient overvoltages caused by





How To Install Whole House Lightning Protection

comprises lightning rods, conductors and electrodes fitted on the roof and grounded. In this article, we'll learn how to install a house lightning protection



How to Install Type 2 Surge Protector , Step-by-Step

To install a Type 2 surge protector, disconnect power and mount it on the DIN rail inside the distribution board. Connect L/N/PE conductors using ≥ 6

The Complete Guide to Distribution Box: Installation, Types & More

Making Smart Electrical Infrastructure Decisions
Distribution boxes form the foundation of safe and reliable electrical systems. Understanding their components, installation requirements, and



Installation information and requirements

What are the installation instructions and requirements? Lightning and surge protection may only be installed, put into operation and maintained by qualified electricians who are familiar with national



Installing Lightning Protection

Application Assistance Selecting and Installing Lightning Protection Devices The primary goal in any lightning protection system is to control the massive energy generated during a lightning strike so it



Power Distribution Boxes Explained Simply

Learn what a power distribution box is, how it works, key components, types, and why it's vital for safe and efficient electrical systems.

Contact Us

For datasheets, pricing, or custom high-speed optical interconnect solutions, please visit:
<https://www.syropy.com.pl>