

Argentina 10kV Enclosed Busbar





Argentina 10kV Enclosed Busbar



ELECTRICAL DISTRIBUTION EQUIPMENT NEW compact RANGE

Busbar segregation shutters activated by circuit breaker movement inside the compartment to reach LSC2B category. HV doors mechanical interlocks ensures safe maintenance Very small overall

8DA10 and 8DB10 Presentation 2011.10 EN

Exclude phase-to-phase short circuits. In worst case only phase-to-earth short circuits could happen. Minimizing of fault risks. No disconnecting of the busbar while outgoing feeder will be repaired or



Conductos de barras y Electroductos - Comaple

Nuestros acuerdos con fabricantes de máxima calidad nos permiten poder suministrar cualquier tipo de sistema de canalización eléctrica prefabricada

Busbars y sistemas de canalización eléctrica , Schneider Electric

Blindobarras Canalis para baja, media y alta potencia. Soluciones duraderas y modulares para distribución eléctrica e iluminación. Fácil integración y uso seguro.



BUS BARS

Our bus bar insulation system offers an alternative to cables routed in parallel and enclosed metal bus bar trunking, especially for the transmission of high currents

8DA10-8DB10 , Siemens

Siemens 8DA10 single-bus and 8DB10 double-bus switchgear are arc-resistant, gas-insulated, medium-voltage solutions. Use these designs in limited spaces, harsh



Flexible tiered busbar enclosure for high current application

The arrangement of busbars in this enclosure can be tailored, allowing a variety of configurations suitable for inflexible, higher-current carrying cables. These are





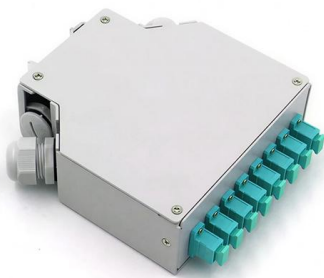
Single busbar systems up to 5000 A

The permissible rated busbar current of the proven switchgear type ZX2 is increased by parallel connection of the two busbar systems. The two physical busbar systems are combined electrically into a



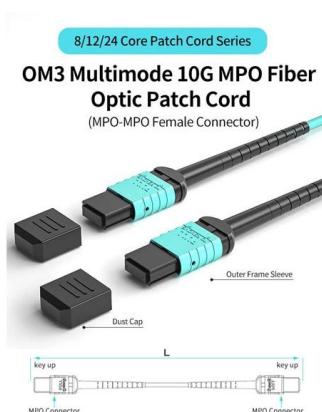
Busbar Trunking Market Size, Growth & Share Report 2031

Busbar trunking system market size allocations to sandwich products will remain elevated through 2031 as premium real-estate values reward compact



Argentina Busbar Market (2025-2031) , Trends, Outlook & Forecast

Manufacturers are introducing innovative busbar solutions with enhanced safety features and customization options to cater to the evolving requirements of utility companies, industrial users, and



Agrawal-28New

Here we briefly discuss the types of metal-enclosed bus systems and their design parameters, to select the correct size and type of aluminium or copper sections and the bus enclosure for the required



8DA10 and 8DB10 Presentation 2011.10 EN

Special feature - Multiple-Vessel-Principle 8DA10 Busbar and circuit-breaker are single-pole enclosed within different vessels Measures in case of faults at circuit-breaker or cable connection: Shut down



Power-Zone Metal-Enclosed Busway

General Power-Zone(TM) metal-enclosed, non-segregated phase medium and low voltage bus systems are custom-designed and manufactured. Standard sizes and ratings and a complete line of

Gas Insulated Switchgear portfolio

Gas-insulated switchgear (GIS) offers a more compact switchgear footprint (vs. air-insulated switchgear) consisting of high voltage components such as circuit-breakers, disconnectors, load interrupters and



Types 8DA10 and 8DB10 up to 40.5 kV

All high-voltage parts including the cable terminations, busbars and voltage transformers are metal-enclosed. Capacitive voltage detecting system to verify safe isolation from supply. Operation is only



Closed busbar systems -A unique power distribution

What is an Enclosed Busbar System? An enclosed busbar system is a highly efficient and organized method of electrical distribution, which involves the use of



Medium Voltage Product , ABB , Primary distribution

Learn about ABB's primary distribution medium voltage switchgear, engineered for optimal performance & reliability in critical power distribution networks.

Types 8DA10 and 8DB10 up to 40.5 kV

Single busbar type 8DAB 24 SBB and double busbar type 8DAB 24 DBB Medium-voltage switchgear 8DA/B is indoor, factory-assembled, type-tested, single-pole metal-enclosed, gas-insulated



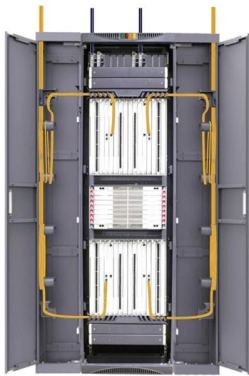
Selection of Medium Voltage Enclosed Busbar System in Power Plant

This special report firstly compares several types of medium voltage busbar systems, including enclosed busbar with shared enclosure, small phase-to-phase enclosed busbar, cable busbar, and insulated



Busbar Systems Power Industrial Enclosures

Busbar Is the Easy Choice to Replace Traditional Wiring The word is out. The future has arrived and it's busbar power distribution. The International Electrotechnical Commission issued a report in May of



Isobar

The Power Busbar Division of C& S founded in 1982 has been meeting the evolving needs of power generating station, process and manufacturing industries, infrastructure establishments, technology

Argentina Busbar Market (2025-2031) , Trends, Outlook & Forecast

Argentina Busbar Market Synopsis The Argentina busbar market is witnessing steady growth attributed to the expanding power generation, transmission, and distribution infrastructure in the country.



BUS BARS

Home BUS BARS Advantages Our bus bar insulation system offers an alternative to cables routed in parallel and enclosed metal bus bar trunking, especially for the



BUSBAR SYSTEM

Busbars systems utilize standard 10 mm flat bars and are a clamp-type arrangement, this allows the bars to easily slide into their holders, offering easy assembly, as



Cu-flex. Flexible copper busbar

Cu-flex busbars are delivered ready to use. A Cu-flex copper busbar is made of copper wires that are woven to a flexible busbar. Our

Busbar Systems Power Industrial Enclosures

Busbar is better equipped to prevent shocks and accidental arcing, and busbar also allows for electronically safe installation and maintenance up to 60 IP inside the industrial enclosure.



Contact Us

For datasheets, pricing, or custom high-speed optical interconnect solutions, please visit:
<https://www.syropy.com.pl>