

Are the requirements for custom-made cold aisle server racks high





Are the requirements for custom-made cold aisle server racks high



A Guide to Hot and Cold Aisle Containment for Optimizing Server

Training and Awareness The hot and cold aisle strategy is a proven method for improving cooling efficiency and reducing energy consumption in data centers. By carefully planning the layout of

Modular Data Center with Cold Aisle Containment

Modular Data Center with Cold Aisle Containment featuring 2.0mm Cold Rolled Steel, Hot Air Containment, and 1100kg Static Payload for robust and efficient server networking.



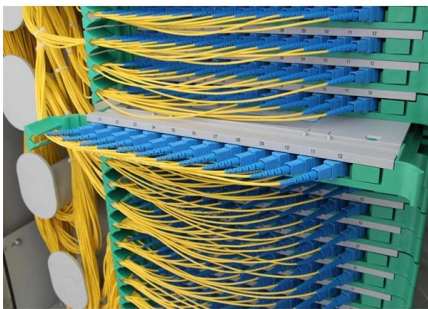
Hot Aisle Containment in Data Centers , Subzero

Cold aisle containment suits facilities with raised floor cold air delivery or limited ceiling infrastructure. Both systems enable higher supply temperature setpoints,



What Are the Essential Server Rack Cooling Requirements for Data

Data center server rack cooling requires precise temperature control (18-27°C/64-81°F), airflow optimization via hot/cold aisle containment, humidity management (40-60% RH), and



Move to a Hot Aisle/Cold Aisle Layout

A Time-tested Technique The hot aisle /cold aisle data center layout was originated by IBM in 1992 and it is one of the oldest ways to save energy in the data center.

What are hot and cold aisles in the data center?

For a data center with fewer servers, a cold aisle containment



Cold Aisle Containment , Legrand

This solution captures many requirements typically placed on the building shell and places it closer to the equipment. This includes busway, conveyance, docking, and other ancillary items.





Hot and Cold Aisle Rack Optimization/Data Center

Hot and cold aisle racks are the configurations used in data centers to optimize airflow and temperature control. The hot aisle contains equipment that expels hot

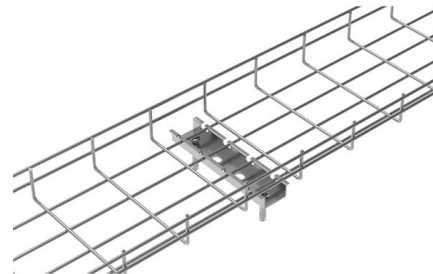


Server Housing Rack Data Center Aisle Hot / Cold

BOLEIN Server Housing Rack is modular, with a cold channel system as well as fire linkage. It can provide a safe and reliable application.

Hot Aisle vs Cold Aisle Containment Explained (Data Center Cooling)

Hot aisle and cold aisle containment are foundational concepts in data center design. When implemented correctly, they improve efficiency, reduce energy consumption, extend



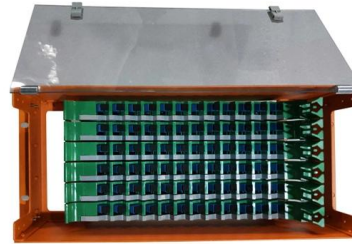
Hot Aisle / Cold Aisle Cooling Explained

The hot aisle / cold aisle configuration conserves energy and lowers cooling costs by managing air flow. This is common practice in every data centre and may seem obvious to most

Cold & Hot Aisle Containment For Data Center Efficiency



Learn how cold and hot aisle containment improves airflow, reduces energy use, and boosts reliability in data centers. Backed by CFD insights from



Hot and cold aisle cooling containment

More frequently, data centers are using hot and/or cold aisle cooling containment solutions to help with managing airflow, eliminating hot spots and improving energy efficiency. In most cases, the rack

What are hot and cold aisles in the data center?

Using hot and cold aisles in a data center is part of an energy-efficient layout for server racks and other computing equipment. Find out more here.



Cold Aisle Containment

Unoccupied height units in the racks should be sealed with tight 19" blanking plates. It is also necessary to bulkhead cable openings in the raised floor so that no cold air can flow directly into the rear area of





How to Maximise Data Center Efficiency with Server Racks

Learn how efficient server rack design and layout can improve airflow, cooling, and cable management to maximize your data center's performance.



Server Room Containment Systems , Hot & Cold Dial Containment in

Hot and cold aisle containment is a proven strategy to optimize airflow, reduce energy costs, and improve cooling efficiency. At Profile IT Solutions, we specialize in designing and implementing

The Basics of Hot Aisle, Cold Aisle Data Center Configurations

Though hot aisle, cold aisle configurations have a number of variations, at their most simplest it consists of server racks in rows with cold air intakes facing one way and hot air exhausts



Intelligent Modular Data Center with Cold Aisle Containment

An intelligent and sustainable modular data center featuring cold aisle containment and a 2000mm height for efficient and scalable operations.



Hot vs. Cold H

Hot aisle or cold aisle containment is a layout design for server racks and other computing data center. The aisle/cold aisle containment configuration is to conserve energy and lower cooling costs by



The cold aisle containment advantage

The ever increasing power requirements for new denser servers has created the need for supporting higher density compute platforms within traditional datacenters. HP partnered with Rittal Corporation

Data Center Design: Hot Aisle & Cold Aisle - Length

Efficient airflow management in data centers relies heavily on proper Hot Aisle and Cold Aisle configurations. To maintain thermal performance, equipment



Hot Aisle/Cold Aisle

Hot aisle/cold aisle is a data center cooling strategy that involves organizing server racks in a specific configuration to optimize airflow and temperature consistency. This layout arranges

FOCUSED COOLING USING COLD AISLE



CONTAINMENT

Air temperatures potentially are high - Because of the containment of the hot aisle, which limits the mixing/leaking of cold air into the hot aisle, air temperatures can exceed acceptable levels for



Modular Cold Aisle Containment w/ 45U Server

AZE offers smart modular customizable hot and cold aisle containment solutions with 42U to 52U floor standing server rack enclosures. Save energy, reduce hotspots



FOCUSED COOLING USING COLD AISLE CONTAINMENT

While either hot aisle or cold aisle containment systems can be installed and are both capable of increasing efficiency and cooling today's high heat data centers, meaningful differences exist in how



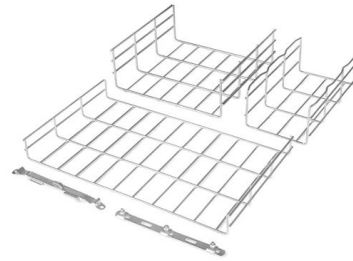
Data Center Design: Hot Aisle & Cold Aisle - Length

Proper aisle planning isn't just about airflow--it's about optimizing safety, serviceability, and system efficiency. By adhering to these length and width



Maximizing Data Center Efficiency: Key Rack

In this layout, server racks are arranged in alternating rows, with the fronts of servers facing each other (Cold Aisles) and the backs facing each other



Contact Us

For datasheets, pricing, or custom high-speed optical interconnect solutions, please visit:
<https://www.syropy.com.pl>