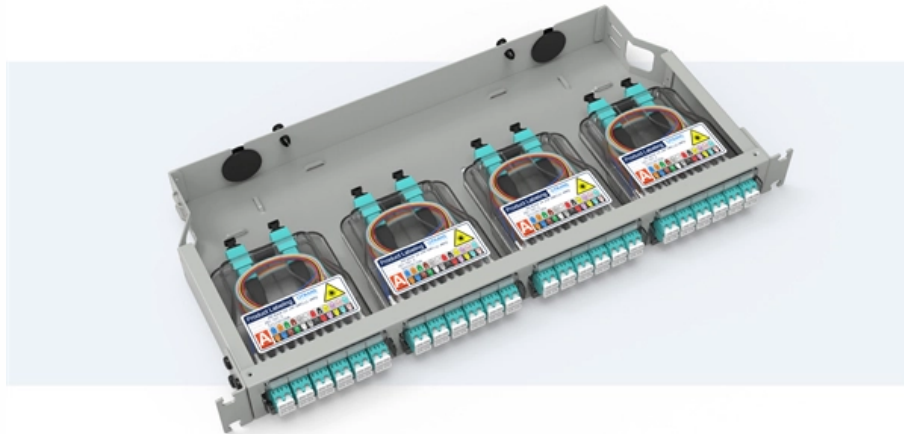


Are telecommunication towers safe

Pre-Terminated Patch Panel

-  Multi-application support
-  Flexible configuration
-  Modular design



Cable Gland Plug
28mm Cable Gland Plug



MPO-LC up to 96 cores
MPO direct connection 48 ports



Mounting Bracket
Semi-open mounting holes





Overview

While cell phone towers are essential for modern life, research suggests that maintaining a safe distance (at least 400–500 meters) may reduce potential health risks. As wireless network infrastructure expands, cell towers are increasingly sited near homes, schools, and playgrounds—often over strong community objection. Telecom tower safety standards are the most important guidelines in the telecommunications industry. In addition, the Act's General Duty Clause, Section 5(a) (1), requires employers to provide their employees with a workplace free. The waves emitted from these antennas, classified as non-ionising radiation, do not alter atomic structures like ionising radiation but can still cause cellular and molecular damage. Recent research and the author's personal experience unveiled four major occupational hazards related to work on telecommunications towers: falling objects, falls from height, electrocution, and animal attacks. Surprisingly, a significant portion of the occupational safety items assessed (80%) were.



Are telecommunication towers safe

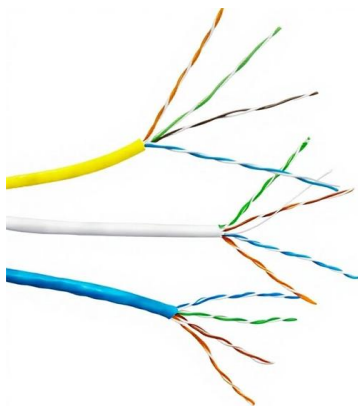


Are 5G Towers Really Safe

Living near new cell masts raises questions about EMF exposure. Discover if 5G towers are a genuine health hazard, explore the debate on cancer

How Close Is Too Close to a Cell Phone Tower? Understanding the

According to the FCC, typical exposure levels from cell towers are much lower than the limits set for safety. However, many health experts believe that more research is needed to



Cell Towers

Cell tower microwaves might travel for as few as two miles in hilly areas, and up to 45 miles where there are fewer obstructions; and of course, they easily penetrate

Dangers of Wireless Tower Climbing: New Survey Finds

The survey, the first ever conducted by and for tower technicians and completed by current wireless tower climbers contracted through AT&T, Verizon, and T-Mobile,



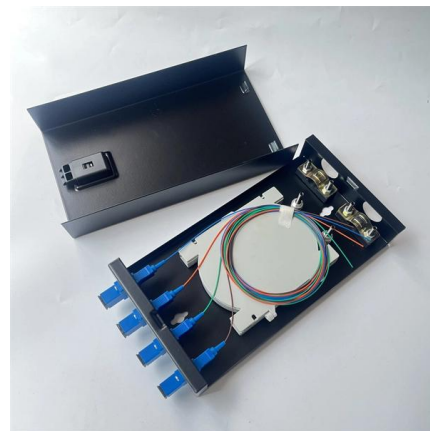
Health Effects of Cell Towers near Homes and Schools

Cell towers emit a type of radiation. Cell towers have wireless antennas that emit radio frequency (RF) non-ionizing radiation. When these



The Safety of Cell Towers: The Truth vs the Myths

The Truth About the Safety of Cell Towers While you might have heard theories about the many dangers of living near cell towers, these stories fall short of the



Human Exposure to Radio Frequency Fields: Guidelines

Primary antennas for transmitting wireless telephone service, including cellular and personal communications service (PCS), are usually





Cell Tower and Children's Health and Safety

Cell Tower Health Effects and Policy Webinar Are cell towers safe? What does the science say? Why are countries worldwide minimizing cellular



How Far Should You Live from a Cell Phone Tower?

Explore how far you should live from a cell phone tower for safe EMF exposure levels. Learn what Israeli, European, and U.S. studies say about health risks and

Communication Tower Best Practices

Employees climb communication towers to perform construction and maintenance activities and face numerous hazards, including fall hazards, hazards associated with structural collapses and improper



Is living near a Mobile Phone Tower Safe?

Have you ever wondered whether mobile phone towers are safe and if there's a safe distance your home or office should maintain from them? This



Radio masts and towers

Radio masts and towers KVLV-TV mast Radio masts and towers are typically tall structures designed to support antennas for telecommunications and



Occupational safety risks during maintenance of

Originality: The present study furthers the discussion of risk management during the maintenance of telecommunication towers. Research

A Guide to Understanding Telecom Tower Safety Standards

An expert guide to telecom tower safety standards. Explore the critical rules for structural design, construction, maintenance, and RF exposure to ensure network safety.



Communications Tower Safety 101

Communications Tower Safety 101 Due to their height and complexity, communications towers pose unique risks to workers. According to the Occupational Safety and Health Administration (OSHA), 11



NIOSH Alert: Preventing Injuries and Deaths from Falls

WARNING! Workers involved in construction and maintenance of telecommunication towers are at high risk of fatal falls. The National Institute for Occupational Safety



Telecommunications / Communication Towers

Keep workers safe from falls from heights, exposure to hazardous chemicals, microwave and rf radiation, electrical and harsh weather



How Close Is Too Close to a Cell Phone Tower? Understanding the

The main concern people have about living close to a cell tower revolves around the radiation emitted by these structures. Cell phone towers transmit RF radiation, a form of non-ionizing



Are cell phone towers safe

Cell phone towers emit non-ionizing radiofrequency (RF) electromagnetic fields and regulatory agencies in several countries say exposures near towers are typically well below safety





Telecommunications Towers Small Business Advocacy Review Panel

To further examine telecommunications tower safety, OSHA has convened a Small Business Advocacy Review (SBAR) Panel under the Small Business Regulatory Enforcement Fairness Act. The SBAR



Cell Tower Safety Risks: Fire, Ice, & Collapse

Cell towers present potential safety risks for schools and neighborhoods. Cell towers are industrial machinery and carry serious risks to buildings, residents, and workers--all of which should

Find out about the safety of telecommunications infrastructure near

In 2022, telecommunication and digital connectivity are important parts of everyday life and it's hard to imagine a world without communications technologies as we know them today.



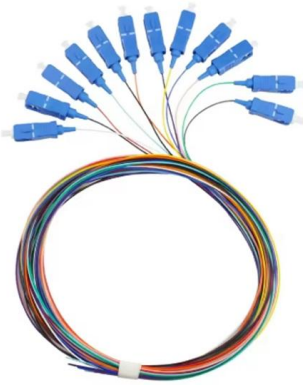
Telecommunications / Communication Towers

Cell tower maintenance worker falls 93 feet to his death Cellular Tower Crew Foreman Killed in Fall from Antenna Mast Communication Tower Operations: A

Are Cell Towers Safe? Health Risks, Science



Cell towers drop property values, create fire risks, and emit radiofrequency (RF) radiation. Children absorb higher rates of cell tower radiation and are biologically



Prevent Injuries and Falls During Telecommunication

Learn how to prevent injuries and falls during telecommunication tower erection. This includes the risks, necessary PPE, safety systems,

Telecom Towers: The health and safety implications

Introduction Telecommunication has become a major drive for socio-economic growth, globally. The utilization of the opportunities that come with it has led to the proliferation of



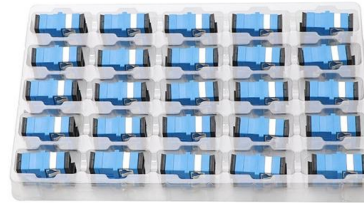
Cell Phones, Cell Towers, and Wireless Safety

Cell Phones, Cell Towers, and Wireless Safety Joel M. Moskowitz, Ph.D., Director Center for Family and Community Health School of Public Health, UC Berkeley



Occupational Safety Risks During Maintenance of

Discover the occupational safety risks of maintaining telecommunication towers and explore strategies to enhance worker protection.



Phone Towers

Workers are often concerned when phone towers, antennas or transmitters are installed on the roof of their workplace. This page provides information to OHS reps on the potential dangers of these

Contact Us

For datasheets, pricing, or custom high-speed optical interconnect solutions, please visit:
<https://www.syropy.com.pl>