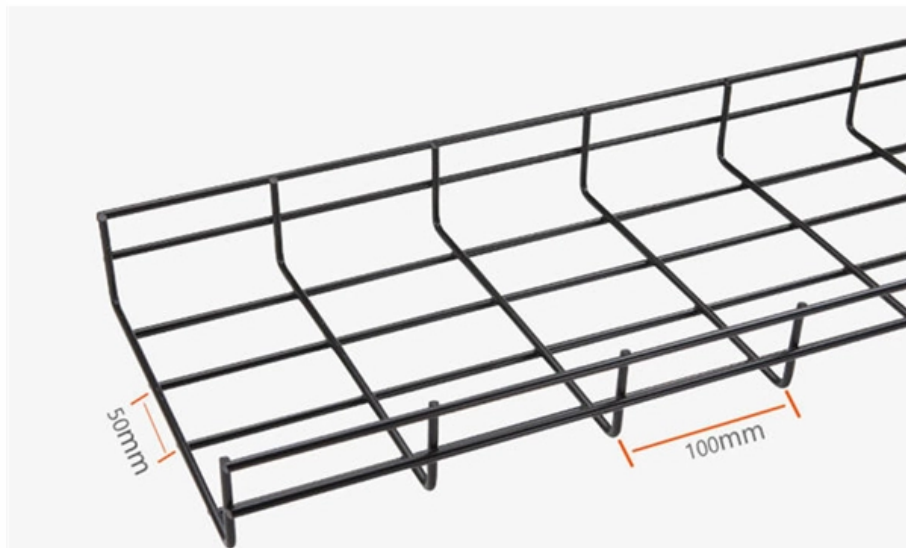


Are optical module enclosures universal





Overview

An optical module is a typically hot-pluggable optical transceiver used in high-bandwidth data communications applications. The form factor and electrical interface are often specified by an interested group using a (MSA). Yes, provided the patch panel supports a universal footprint (such as standard LGX). Many modern enclosures are designed to hold a mix of Base-8, Base-12, single-mode, and multimode cassettes simultaneously, allowing for flexible hybrid configurations. To compliment these OSP enclosures Plugin Optics offers a full suite of hardware accessories that. Corning universal optical splice enclosures (OSE) are designed to manage the transition between outside plant cables and fire-retardant indoor riser cables in fiber optic networks. This document focuses on projection optical modules that incorporate Texas Instruments' DLP Display chips and are designed to project an image onto a surface for a variety of applications, including smartphones, tablets, display projectors, smart home displays, digital signage, AR glasses, and.



Are optical module enclosures universal



Optical module

Overview
Electrical Interface Types
Optical modulation and multiplexing types
In-module components
Electrical cable equivalent
Front panel optical module MSAs
On-Board Optical module MSAs
Users of Optical Modules

An optical module is a typically hot-pluggable optical transceiver used in high-bandwidth data communications applications. Optical modules typically have an electrical interface on the side that connects to the inside of the system and an optical interface on the side that connects to the outside world through a fiber optic cable. The form factor and electrical interface are often specified by an interested group using a multi-source agreement (MSA). Optical modules can either plug into a front pa

Understanding Optical Modules: Working Principles,

Explore the working principles, structures, and performance metrics of optical modules, essential components of optical fiber communication systems. Learn



Optical Splice Enclosure (OSE) Universal , Corning

These rugged and versatile enclosures are ideal for use in equipment rooms, splicing vaults or building entrance terminals in CATV, telco or private network



Fiber Enclosures, Rack Mount & Wall Mount Enclosures

FS FHD/FHZ series fiber enclosures (wall mount/rack mount) provide versatility and flexibility with a fully modular solution for a variety of fiber optic

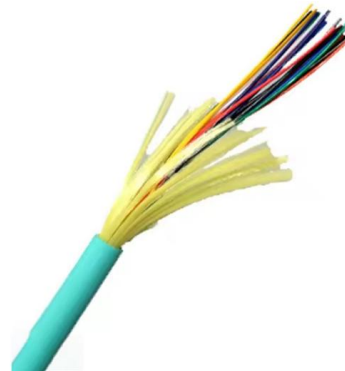


Optical module

An optical module is a typically hot-pluggable optical transceiver used in high-bandwidth data communications applications. Optical modules typically have an electrical interface on the side that

LightLink 400sx Optical Splicing and Distribution Enclosure

The LightLink (LL) 400sx Fiber Optic Splicing and Distribution Enclosure provides for organizing, splicing, and interconnecting fibers in FTTx, broadband, distribution and building entrance applications.



OSE-LD0-0T-1-L , Optical Splice Enclosure (OSE)

Corning universal optical splice enclosures (OSE) are designed to manage the transition between outside plant cables and fire-retardant indoor riser cables in



Universal Optical Modules

We offer optical modules supporting speeds from 1G to 400G, ideal for expanding network infrastructure in data centres and telecom operators. Find out how easy it

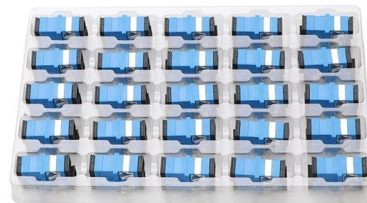


Product Spec Sheet OSE-UD0-W0-3

OSE-UD0-W0-3 Corning universal optical splice enclosures (OSE) are designed to manage the transition between outside plant cables and fire-retardant indoor riser cables in fiber

Fiber Patch Panels: A Beginner's Guide , RLH

Fiber optic patch panels are enclosures that act as a distribution hub for fiber cable. A bulk (multi-strand) fiber cable enters the patch panel and then each fiber strand



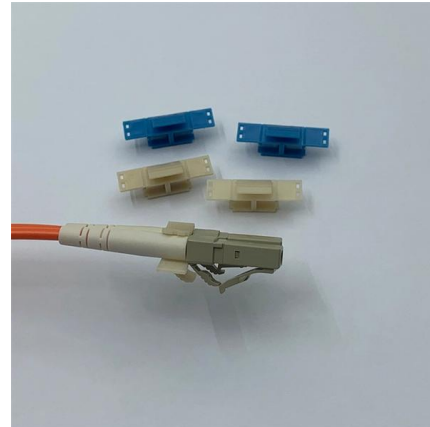
OSE-UD0-00-3 , Optical Splice Enclosure (OSE) Universal Up to

These rugged and versatile enclosures are ideal for use in equipment rooms, splicing vaults or building entrance terminals in CATV, telco or private network environments. The universal OSEs were



MPO Cassette Patch Panel 2026 Buying Guide

The MPO cassette is the actual optical module that transitions the multi-fiber trunk into discrete ports. The MPO patch panel is the physical metal or plastic rack-mountable enclosure that

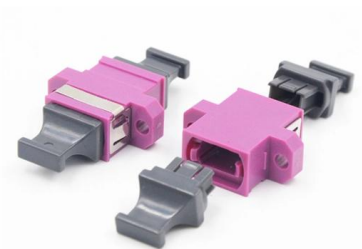


OSE-UD0-00-3 , Optical Splice Enclosure (OSE) Universal Up to

Optical Splice Enclosure (OSE) Universal Up to 5,184 single-fiber splice or 6,912 ribbon splice, space for 48 OSE splice trays, no lock Typically ships in 21 day (s) Actual lead time confirmed upon receipt of

Reliable Fiber Optic Enclosures for Modern Networks

Discover EPCOM's reliable Fiber Optic Enclosures for indoor, outdoor, splice, distribution, and termination needs. Learn installation best practices.



Optical Splice Enclosure (OSE) Universal

Corning universal optical splice enclosures (OSE) are designed to manage the transition between outside plant cables and fire- retardant indoor riser cables in fiber optic networks. These



LightLink Optical Entrance Enclosures

Rugged steel construction, stainless hardware and a durable powder coat finish ensure that your splices will be well protected for years to come. Each enclosure ships with a standard key / key lock and a



Guide to Various Fiber Optic Enclosure Types for

Fiber optic networks are the backbone of our modern communications. The small fiber optic cables need careful protection. Fiber enclosures keep these cables

Optical Module Housings Guide

The choice of optical module is critical, and so is the quality of its housing. We carefully select our products from trusted suppliers who prioritize robust housing design and effective thermal



Product Spec Sheet OSE-HD0-00-1

OSE-HD0-00-1 Corning universal optical splice enclosures (OSE) are designed to manage the transition between outside plant cables and fire-retardant indoor riser cables in fiber



Optical splicing enclosure , Cabling Installation & Maintenance

Optical splicing enclosure T-slot, wall-, or rack-mounted Universal Optical Splice Enclosures (ose) accommodate preconnectorized cable assemblies or stubbed optical patch panels.



Corning Enclosure Products

Corning Enclosure Products CORNING offers enterprise network complete tip-to-tip fiber optic product solutions. CORNING hardware products include CCH housing panels, CCH & PCH rack mounts,

From Dome to Modular: Your Guide to Fiber Splice

From Dome to Modular: Your Guide to Fiber Splice Enclosure Types Choosing the right fiber splice enclosure means better network reliability and



Product Spec Sheet OSE-UD0-00-3-L

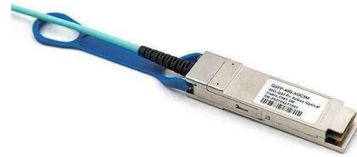
OSE-UD0-00-3-L Corning universal optical splice enclosures (OSE) are designed to manage the transition between outside plant cables and fire-retardant indoor riser cables in fiber

TI DLP® System Design: Optical Module



Specifications

The presentation provides a comprehensive overview of the guidelines specific to designing an optical system with DLP Products and enables customers throughout the design process. Please note that



Rack Mount Fiber Patch Panel Enclosures

OptoSpan Rack Mount Matrix Enclosures are available in 1U, 2U, and 4U heights and may be configured to offer dozens of high performance networking

The Most Comprehensive Guide Of Optical Modules

Explore the ultimate guide to optical modules. Learn types, functions, performance metrics & how to choose the right module for your fiber network.



Why Splice Closures Matter for Fiber Network Life

Fiber optic networks rely on splice closures to protect connection points where cables join, supporting high-speed data transmission with minimal



Optical Enclosures

Compact Universal Enclosure CFIT-Flex (TM)
Amphenol's new CFIT-Flex(TM) Series of
universal enclosures were designed around the
principal of "flexibility." These



Contact Us

For datasheets, pricing, or custom high-speed optical interconnect solutions,
please visit:
<https://www.syropy.com.pl>