

Are cable trays considered low-voltage electrical installations





Overview

Answer: Yes — NEC permits type MC (Article 334) and type MV (Article 326) in industrial establishments where qualified persons will service the installation. Multiconductor cables rated over 600 volts shall be separated from lower voltage cables by a separate cable tray or a solid. A power-limited tray cable (PLTC) is covered by Article 725 and is a factory assembly of two or more insulated conductors rated at 300 volts, enclosed in a non-metallic jacket. The mechanical and electrical characteristics, tests, certifications, overall quality management, recommendations mentioned in this technical guide only apply to our own cable management ranges and cannot under any circumstances be transposed to silicone, overheating or. Low-voltage wiring carries 50V or less and powers business-critical systems like data/Ethernet (Cat5e/Cat6/Cat6a), VoIP, security, A/V, building automation, and fiber backbones. When completely installed, without damage either to conductors or structural system use maintain spacing or to keep cables in place when the tray is erect the minimum bend radius for cables as they exit the bottom of the cable tray.



Are cable trays considered low-voltage electrical installations



NFPA 70 and Low Voltage Systems , National Training

Coaxial cable is typically CM-type, making it suitable for most low-voltage applications. A power-limited tray cable (PLTC) is covered by Article 725 and is a

Low Voltage Wiring Code 2026: All You Need To Know

Low voltage wiring refers to electrical systems that operate at 50 volts (V) or less -- including thermostats, doorbells, security systems, audio-video networks, and data cabling. Unlike standard



Types of Cable Typically Used in Cable Tray

Type ITC - Instrumentation Tray Cable - (NEC Article 727) - These types of cables are instrumentation cables and are available in shielded or unshielded

Understanding NFPA 70 NEC Standards for Low

According to the National Electrical Code (NEC), specifically outlined in NFPA 70, there are stringent performance standards that low voltage cabling must satisfy to



Cable trays are structural components of a facility's electrical system

Cable trays are structural components of a facility's electrical system, and as such, are part of a planned cable management system. The use and installation of cable trays are covered by OSHA in 29 CFR



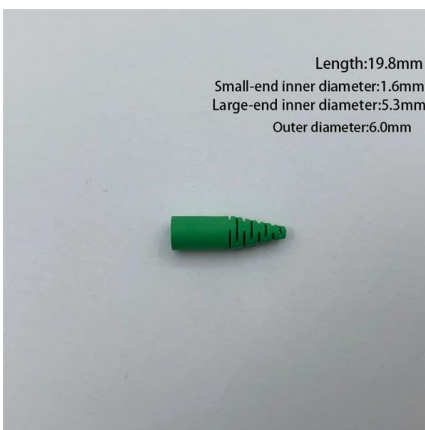
Everything You Need to Know About Low Voltage Cable

Discover everything about low voltage cable systems, including their specifications, applications, and how they differ from regular wire for your projects.



Cable Tray Technical Guide A practical guide to product selection and

A practical guide to product selection and installation This guide for engineers and installers has been developed by ABB as a practical reference regarding cable tray characteristics, installation, and





Low Voltage Wiring: How It Works, Use Cases, Benefits

TL;DR Summary Low-voltage wiring carries 50V or less and powers business-critical systems like data/Ethernet (Cat5e/Cat6/Cat6a), VoIP, security,



Cable Tray Technical Guide A practical guide to product selection and

This guide for engineers and installers has been developed by ABB as a practical reference regarding cable tray characteristics, installation, and requirements.

FactSheet

FactSheet Electrical Safety Hazards of Overloading Cable Trays According to the 2005 National Electrical Code® (NEC), a cable tray system is " unit or assembly of units or sections and



Low Voltage Wiring Code: All You Need To Know

Dive into the essential details of the low voltage wiring code to ensure your installations meet current safety and quality standards.



Annexure D

Cables and cable support systems for extra-low voltage and low voltage must be designed and constructed conforming to the General Electrical Requirements and this Annexure. Specific earthing

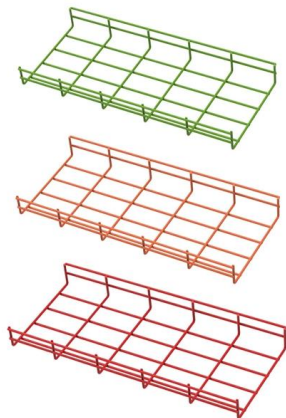


GUIDE CABLE TRAYS TECHNICAL

If it has excellent electrical continuity and is integrated in the installation's equipotential bonding system, a metal cable tray reduces the coupling's impact and thus contributes to good EMC of the electrical

Cable Tray SHIB NAL

The National Electrical Manufacturers Association (NEMA) also publishes three consensus standards that apply to the proper manufacture and installation of cable trays: ANSI/NEMA-VE 1-1998, Metal



Installation Of Cable In Cable Trays: NEC, Safety

Installation of Cable in Cable Trays ensures proper routing, cable management, NEC compliance, grounding, fire safety, and load capacity.

Guide To Low Voltage Wiring Code , Right



Touch Electrical

Learn everything you need to know about low voltage wiring codes, including safety tips, installation best practices, and NEC compliance.

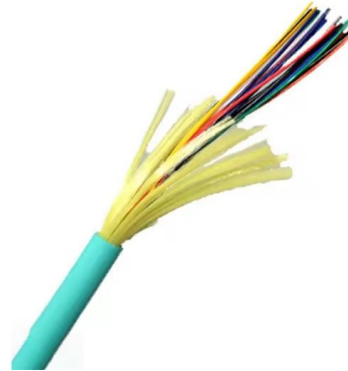


Cable Tray Questions , Cable Tray Institute

Question 8: Can high voltage cables be installed in cable trays? Answer: Yes -- NEC permits type MC (Article 334) and type MV (Article 326) in industrial establishments where qualified persons will

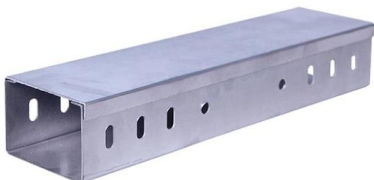
Cable trays are structural components of a facility's electrical system

The use and installation of cable trays are covered by OSHA in 29 CFR 1910.305(a)(3) and within various provisions of the National Electric Code (NEC). When properly planned, installed, and



2 0 0 5

Typical 300 volt insulated multiconductor instrumentation tray cables (ITC) and power limited tray cables (PLTC) cost the same for both cable tray and conduit wiring systems.



Underground Distribution Type Cable Connectors
Electrical Measuring Equipment Back
Electromechanical Electricity Meters Meter
Mounting and Test Equipment Solid State
Electricity



**California Code of Regulations, Title 8,
Section 2305.2. Scope and**

(a) These Low-Voltage Electrical Safety Orders apply to all electrical installations and electrical equipment operating or intended to operate on systems of 600 volts, nominal, or less and to all work



**Low Voltage Wiring: How It Works, Use
Cases, Benefits**

In many commercial installs, low-voltage cabling may instead run in cable tray, J-hooks, or structured pathways, as long as it's properly supported



**Understanding Electrical Cable Trays,
Cables, and**

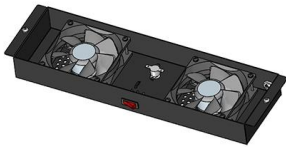
Additionally, cable trays can accommodate various cable types, making them suitable for diverse applications, from low-voltage systems to high-power





Cable Tray Questions , Cable Tray Institute

Answer: No. Cable trays are a support system for electrical cables, power, signal, and communication and optical fiber cables. NEC section 300-8 does not permit any tube, pipe, or equal for water, air



Understanding NEC Article 392

Ultimately, cable trays form the absolute backbone of large-scale electrical distribution networks. By dedicating the time to fully Understanding NEC Article 392, you protect both your

How to Choose Cable Tray for Low Voltage System

Discover a professional 5-step guide on how to choose the right cable tray for low voltage system. Learn about types, sizing, standards for reliable



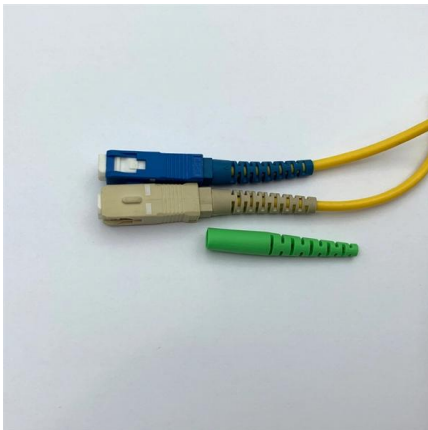
A Guide to Installing and Supporting Electrical Cable Trays

A professional guide to installing electrical cable tray systems per NEC Article 392. Covers support, securing cables, and fill calculations.



Cable Tray Questions , Cable Tray Institute

Answer: Yes -- NEC permits type MC (Article 334) and type MV (Article 326) in industrial establishments where qualified persons will service the installation. Multiconductor cables rated over



NEC Article 392: Cable Tray Systems , PDF , Electrical

It provides rules for acceptable wiring methods that can be

Contact Us

For datasheets, pricing, or custom high-speed optical interconnect solutions, please visit:
<https://www.syropy.com.pl>