

Arched bridge layout





Overview

Arch bridges are marvels of engineering, using the arch shape to efficiently transfer loads to supports. From ancient stone structures to modern steel designs, these bridges span gaps and obstacles with grace and strength. Arch bridges work by transferring the weight of the bridge and its loads partially as horizontal thrust restrained by the abutments at either end, and partially as vertical loads on the arch supports. Please fill out the Download Section below the Comment Section to download the 80 Masterworks of CIVIL Engineering 1. Arch Bridge Definition and Classifications An arch bridge is usually defined as a vertically curved and axially compressed structural member spanning an opening and providing. By transferring the compressive forces through the arch rib or barrels, they are transferred to the base of the arch as outward.



Arched bridge layout



Crafting Your Dream: A Step-by-Step Guide to Building an Arched

An arched bridge serves as a functional pathway, while also acting as a stunning visual element that draws the eye and elevates the overall landscape. In this comprehensive guide, we'll explore the

Optimizing an Arch Bridge Design

An investigation into the optimization of an arch bridge design to span 50 meters, focusing on material usage, cost efficiency, and structural integrity.



What Is Arch Bridge Design? A Visual Guide for

The concept of arch bridge layout is deeply rooted in the principles of engineering and physics. In this article, we will walk you through all you need to

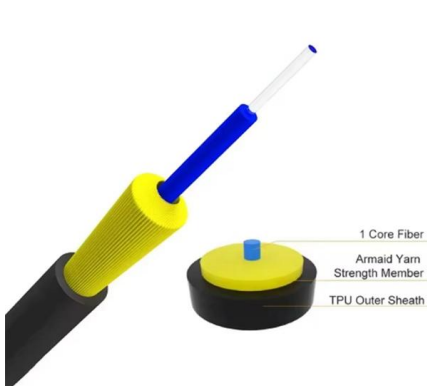
General layout of the fixed arch footbridge based on

Download scientific diagram , General layout of the fixed arch footbridge based on revised structural design from publication: Horizontal Rotation via Floatation as



The Ultimate Minecraft Bridge Building Guide: 10 Unique

Building Tips for Minecraft Bridges Building bridges in Minecraft requires both creativity and planning. Here are some extra tips to elevate your



Hanger layout in tied arch bridges , Download Scientific

Download scientific diagram , Hanger layout in tied arch bridges from publication: Structural Optimization of Network Arch Bridges with Hollow Tubular Arches and



What is Arch Bridge? Different Types of Arch Bridges

To bridge massive distances, the traditional Romans designed a series of supports that were connected with stone arches. These series of arched structures were



Arch bridge , Definition, Mechanics, Examples, History, & Facts

Arch bridge, bridge in which the main supporting elements are arches. Arch bridges can be made of stone, concrete, iron, or steel and



Bridge Geometry Manual

Determining constraints accurate layouts geometry - Introduction is central the drawings of bridge is fundamental bridge geometry superstructures Bridge geometry and provides substructures.

Design Considerations for Arch Bridges

Arch bridges are one of the oldest types of bridges that are still being used to date. Take a look at their classification, design



Arch bridge , Definition, Mechanics, Examples, History, & Facts

As these bridges were subject to an unpredictable assortment of tension and compression, the Chinese created a flexible masonry-arch bridge



Insights into Optimal Schemes of Radial Network Arch

The main objective of the article is to find the optimal ranges of the cardinal topological, shape, and dimensional parameters that fully describe the

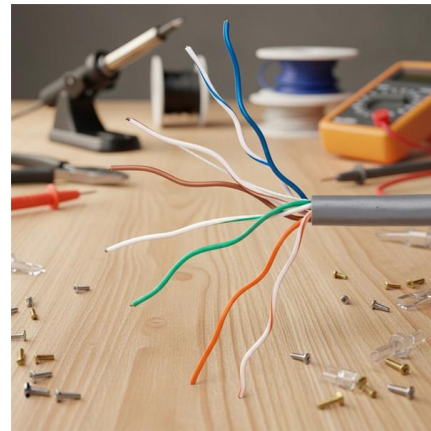


Analysis and Design of Arch Bridges

This article aims to explore the analysis and design of a concrete arch bridges subjected to Load Model 1 of Eurocode, using Staad Pro software.

The optimal layout of half-through arch bridge by

Purpose - In this paper, an exploratory case study of the shape of the concrete arched bridge has been studied by particle swarm optimization algorithm.



7 Types of Bridges Every Engineer Should Know About

Learn about the 7 different types of bridges and read about the advantages and disadvantages of each method of construction.



Bridge elevation and plan layout (dimensions in cm)

Download scientific diagram , Bridge elevation and plan layout (dimensions in cm) from publication: Investigating asymmetric spatial butterfly-shaped steel arch



Application



Arch Bridges

Arch Bridge - Types of Arch Bridges Arch bridge is one of the most popular types of bridges, which came into use over 3000 years ago and remained in height of

How to build a arch bridge

Building an arch bridge is a lot easier than you might think. This article provides step-by-step instructions on how to build your own arched



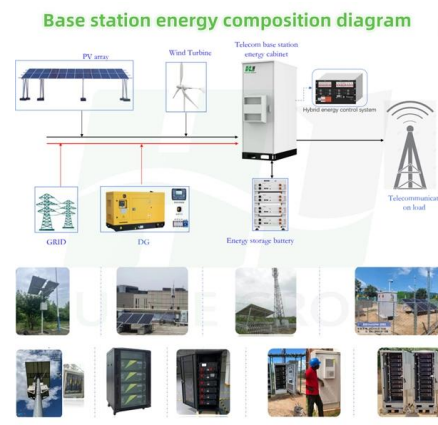
Arch Bridges

Arched bridges can be defined as vertically curved and axially compressed structural members spanning channels, roads, or railways. Arch bridges can be grouped into three main categories according to



Design of arch bridges , PDF

There are three types of arch bridges defined by their structural connections: three hinged, two hinged, and fixed. Arch bridges are also classified by their



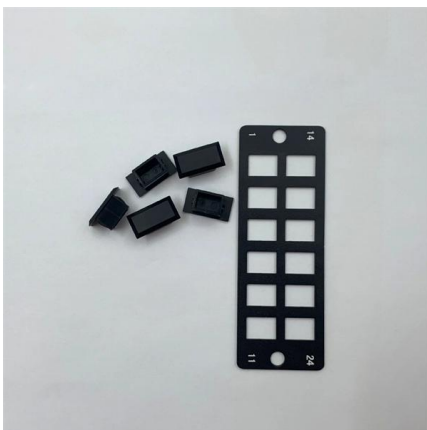
Arch Bridges - Types and Behavior , Bridge Engineering

Types of arch bridges include deck, through, and tied-arch designs. Each type has unique features, allowing engineers to choose the best option for specific site conditions and aesthetic requirements.



A Form Finding Method for Arch Bridges Using

Topology optimization has developed rapidly in the past three decades; as a creative and efficient optimization technique, it has been applied in



Arch bridge

An arch bridge is a bridge with abutments at each end shaped as a curved arch. Arch bridges work by transferring the weight of the bridge and its loads partially



Design Considerations for Arch Bridges

Arch bridges are one of the oldest types of bridges that are still being used to date. Take a look at their classification, design considerations, and some

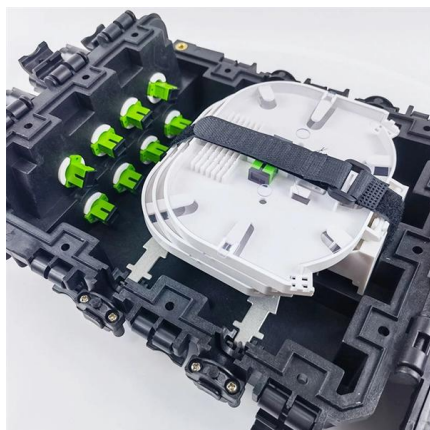
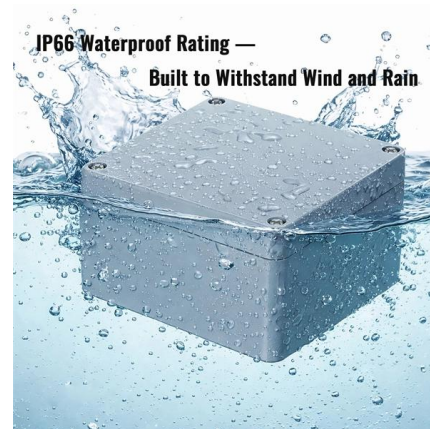


Arch Bridge , Features & Types of Arch Bridge

Arch Bridge is the bridge in which the horizontal thrust developed is restrained by the abutments provided at each end of the bridge. As the name

L15b07

2. TYPES OF ARCH BRIDGES 2.1 Arch Layout The nomenclature of the structural elements of an arch bridge is given in Figure 1. Arch bridges can be distinguished



Load conditions and sensor layout scheme of each arch bridge: (a)

Download scientific diagram , Load conditions and sensor layout scheme of each arch bridge: (a) deck arch bridge, (b) half-through bridge, and (c) through arch bridge. from publication: Deflection



Contact Us

For datasheets, pricing, or custom high-speed optical interconnect solutions, please visit:

<https://www.syropy.com.pl>