

Anti-tracking OTN routers for backbone networks





Anti-tracking OTN routers for backbone networks



From OTN to OTN Cluster, Maximizing Node Values Through

Network flattening enables that services be transmitted in one hop, and OTN grooming across the backbone and metro layers increasingly. For the services between the aggregation layer and

Cisco NCS 4200 Series Software Configuration Guide,

Optical Transport Network (OTN) Wrapper feature provides robust transport services that leverage many of the benefits such as resiliency and



Backbone Router

Essentially, it's a router that connects these disparate networks to the internet backbone, facilitating communication and data transfer between networks

CloudBackbone: Converged Network, Improved Efficiency

First, the CloudBackbone solution provides the industry's largest-capacity backbone routers, NE9000. These routers utilize the industry's first 4T line cards with a capacity of up to 80T, twice the industry



What Is OTN (Optical Transport Network)? The Backbone of Long

The Future of OTN As digital communication technologies continue to evolve, the role of OTN in the telecommunications landscape is set to expand further. With the proliferation of 5G

IPv6 Backbone Router RFC 8929

This document updates RFCs 6775 and 8505 in order to enable proxy services for IPv6 Neighbor Discovery by Routing Registrars called "Backbone Routers". Backbone Routers are placed along the



Backbone WDM & OTN

The backbone WDM is a new-generation large-capacity OTN product for the beyond-100G era. It is mainly applied to backbone networks and core nodes of metro networks and integrates OXC at the



DCI Backbone Network Solution

DCI Backbone Network Solution By 2025, 90% of services will be migrated to the cloud, being hosted in DCs. DCs are getting larger, and inter-DC traffic will quadruple over the coming five years, requiring

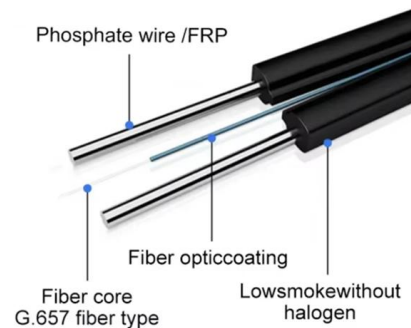


Metro Core and Backbone

Tejas TJ1600 metro and backbone optical transport family enables operators to expand network capacity for the cloud-age while reducing cost per bit and

All about OTN Systems and what it can do for your company.

OTN Systems OTN (Open Transport Network) is a unique system that can integrate virtually all existing applications for voice, data, LAN, video, SCADA, etc. into one high speed network, using a fibre optic



Backbone OTN/DWDM network , Download Scientific

Download scientific diagram , Backbone OTN/DWDM network from publication: Firefly Algorithm Based Optimization Model for Planning of Optical Transport



100G OTN: a future trend in IDC backbone network

Combined with the development demand of IDC service, this paper analyzes the current situation of 100G OTN (Optical Transport Network)

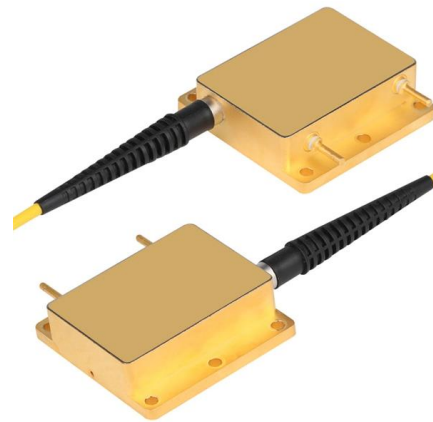


Transport Networks

View transport network application information from Microchip, including block diagrams with recommended products and design resources.

OTN-over-WDM optimization in 5G networks: key challenges

Optical Transport Networks (OTN) have been proposed as one potential and promising supporting technology for 5G networks at the transport level, particularly for next generation transport networks



DWDM & OTN Backbone Equipment , Tailored to Your Industry

PacketLight delivers versatile and scalable DWDM, OTN, and optical transport solutions designed to meet the specific needs of key industries worldwide.



Next-Generation Transport Networks Leveraging

In this context, this chapter looks into the network architectures, including the optical transport network (OTN) switch (both traditional and



Hot topics in Optical Transport Networks

ITU-T has used the completed optical specification from IEEE 802.3 as a basis for how to use the same pluggable modules for OTN client interfaces rather than developing competing or

Next-generation transport solutions for IP backbone networks: benefits

Without new network solutions, this trend would lead to a strong increase in number and size of IP routers while already today's requirements make it difficult to realise large-scale IP



What is OTN? Optical Transport Network Benefits & Services

What OTN (Optical Transport Network) is, how it works with DWDM, and its advantages such as FEC, scalability, and monitoring.

Optical transport network



An optical transport network (OTN) is a digital wrapper that encapsulates frames of data, to allow multiple data sources to be sent on the same channel. This creates an optical virtual private network



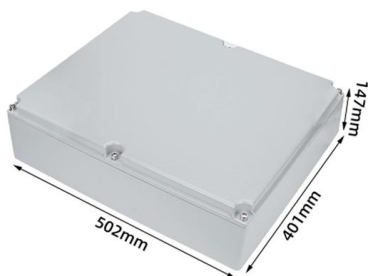
Backbone OTN

Backbone OTN Backbone OTN is a new generation of high-capacity OTN products aimed at Beyond100G era. It is mainly used in the core nodes of backbone networks and metropolitan area



Cisco ASR 900 Router Series Configuration Guide, Cisco IOS XE 17

Optical Transport Network (OTN) Wrapper feature provides robust transport services that leverage many of the benefits such as resiliency and performance monitoring, while adding



Microsoft Word

This paper investigates the benefits that an appropriate transport network based on ASTN (Automatic Switched Transport Network) and OTN (Optical Transport Network) technology can bring to future IP



Backbone OTN

FiberHome's Backbone OTN solution supports 100G/200/400G/1.6T per wavelength, providing and ultra wide, flexible, agile, and intelligent OTN/WDM transmission solutions for operators.



Microsoft Word

1. Introduction As part of Telecom Infra Project (TIP) Open Optical & Packet Transport (OOPT) Project Group, a new subgroup DOR (Disaggregated Open Router) has been formed with a mission to

Optical Backbone Network Evolution: Design, Optimization and

In planning and designing a large optical transport network, operators are faced with a complex optimization problem that needs to take into account the mix of legacy and new services, new



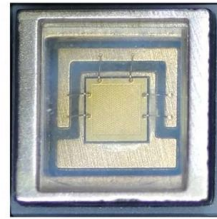
Protection Techniques using Resource Delayed Release for SDN

To address this issue, a reliable protection method that reroutes the traffic from the damaged path towards the intended destination is needed.



WDM & OTN

Huawei's E2E WDM/OTN intelligent optical transport solution is widely applicable to the backbone core layer, metro core layer, metro aggregation layer, and metro



Contact Us

For datasheets, pricing, or custom high-speed optical interconnect solutions, please visit:

<https://www.syropy.com.pl>