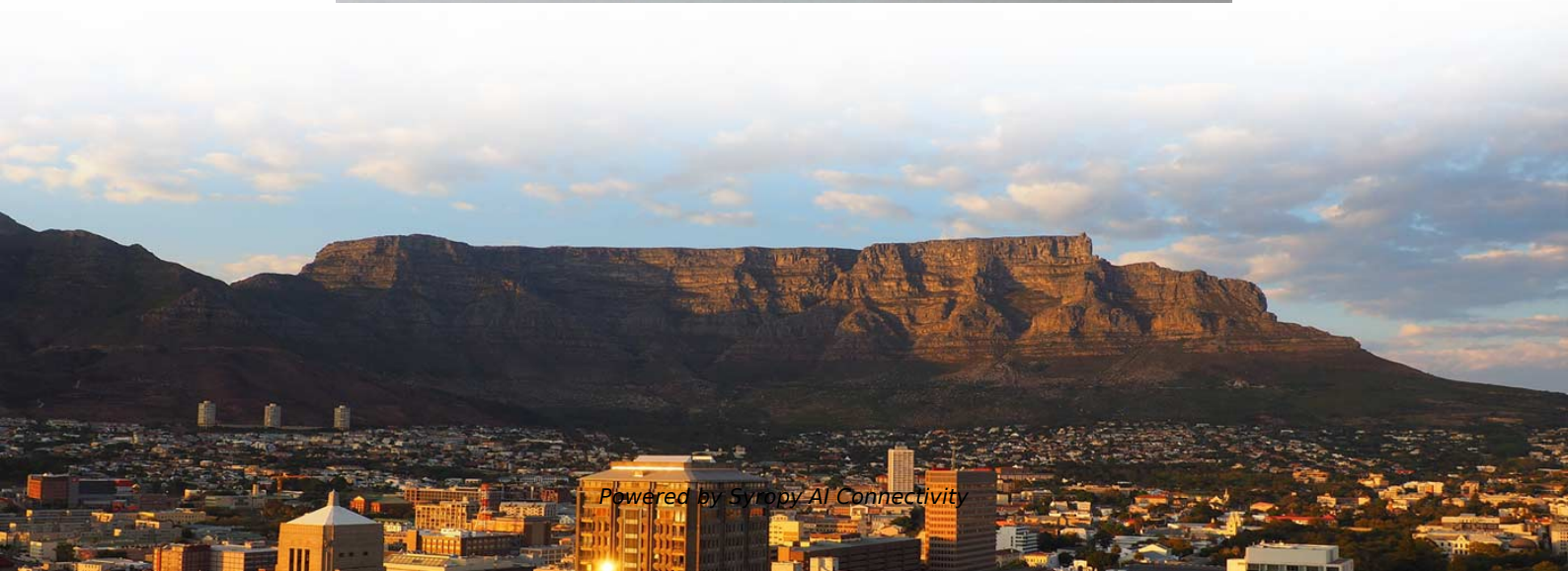


Angola Export Communication Station EMS 10kW CIF Price





Angola Export Communication Station EMS 10kW CIF Price

Customs Tariff - ARCCLA

In summary, we inform that it is our intention to associate the Bill of Lading, a commercial invoice and a form that details above all the weight, nature, quantity of goods to the process of issuing Certificates



Angola

Angola's current installed capacity is estimated at 5.7 GW but only 70 percent is in use. The country's current energy mix consists of 61.8 percent hydropower, 37.6 percent other fossil fuels



ANGOLA Export Data , ANGOLA Customs Data

Get verified angola Export Data, angola customs data and shipment data including exporters, buyers, trade patterns, HS codes and port information at Exim Trade Data.

Angola

You can find the top exports of Angola by HS code (Harmonized System), price, country, port of export, mode of transport, quantity, units, FOB value (free on board), currency, customs clearance, and



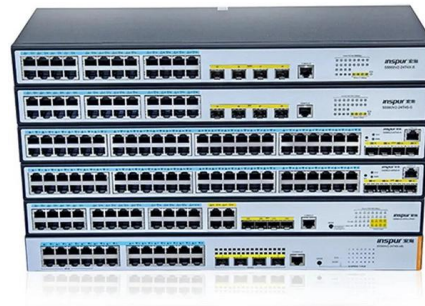
FIDI Import Guide_Angola

Import Customs guide ANGOLA The global quality standard for international moving.



Angola Country Commercial Guide

Customs, Regulations & Standards: Check the latest on tariff and non-tariff barriers, export controls, import requirements and documentation, product standards, and trade agreements.



Country Analysis Brief: Angola

Angola imports and exports petroleum products through its maritime ports. According to seaborne trade flow estimates by Vortexa, Angola exported an average of 57,000 b/d of petroleum





Ship to ANGOLA :ANGOLA Tariffs and Customs Fees

ANGOLA Tariffs and Value Added Tax Guide Tariffs refer to the taxes levied by ANGOLA on goods entering or leaving its borders in accordance with local laws. Regardless of the declared purpose of

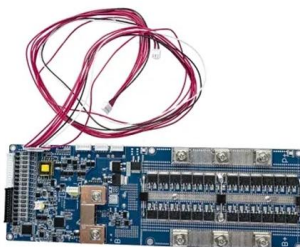
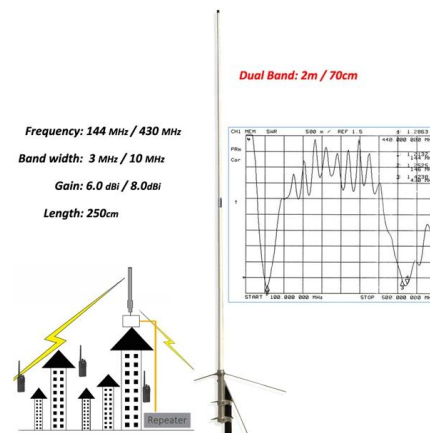


Angola power map illustrates actual and planned power

Revised in May 2023, this map provides a detailed view of the power sector in Angola. The locations of power generation facilities that are operating, under

CMA CGM , Public Prices Finder

Our prices as per Russian rules. Get more information here.



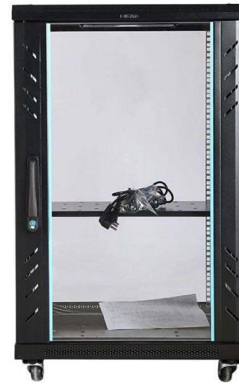
FIDI Import Guide_Angola

Returning Angolan citizens that can prove they have been living abroad for 6 months or more are exempt from duties and taxes on their household goods shipments. The customs Stamp Duty is still



Desco Angola

P22-6 Prime Power 20 kVA / 16 kW Standby
Power 25 kVA / 20 kW Frequency 50 Hz / 60 Hz
info



Network Communications Equipment Price in Angola

The average network communications equipment export price stood at \$954 per unit in 2023, falling by -20.3% against the previous year. Overall, the export price, however, posted a



-2 to 5 days Transit time Reefer plugs

Export Only terminal with on- site scanner, 6 RS equipped with VGM, Dedicated Export Gate Lane 1 Location Largest stacking capacity in Angola, no external ICD Cost Savings No additional charges of



Incoterms

Incoterms® rules of transportation are frequently used in international and domestic contracts. Learn about the 2020 Incoterms.



DP WORLD LUANDA

DP World MPL Serviços, S.A. Terminal Multiusos, Porto de Luanda Luanda, República de Angola Todos os Serviços estipulados no Regulamento do Tarifário da DP World são regulados de acordo com os



Angola Trade , WITS

Access Angola's trade profile. Data includes annual and monthly exports and imports, tariffs, foreign direct investment (FDI), global value chain (GVC) participation, and the Services Policy



Export HS Code 84101210 (Of a power exceeding 1,000 Kw but not

Export Of a power exceeding 1,000 Kw but not exceeding 10,000 Kw: Of power exceeding 1000 Kw but not exceeding 5000 Kw (HS 84101210) from India to Angola. 8-digit tariff line guide with market



Angola Trade Summary , WITS Data

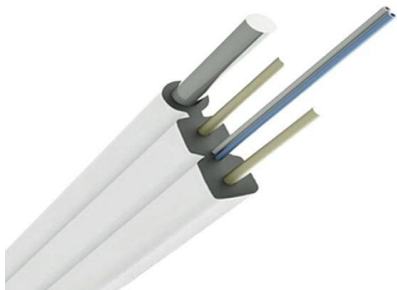
Angola exports, imports, tariff by year. For at a glance i.e. latest available trade, tariff, trade barriers and other trade related data [Click Here](#). Please note the exports, imports and tariff data are based on





REPUBLIC OF ANGOLA MINISTRY OF TELECOMMUNICATIONS,

REPUBLIC OF ANGOLA MINISTRY OF TELECOMMUNICATIONS, INFORMATION TECHNOLOGIES AND SOCIAL COMMUNICATION



Nationwide Government and Military Master Frequency List

SaveSave Nationwide Government and Military Master Frequenc For Later Share 90%90% found this document useful, undefined 10%, undefined Print Embed

Angola

Angola - Import Tariffs Includes information on average tariff rates and types that U.S. firms should be aware of when exporting to the market.



SWITCH - zicaigrupo

REDE E INTERNET SWITCH POE DE 24 PORTAS D-LINK GIGABIT UN MANA





Information which might help Edit Angola maintains no export subsidies; and there is no official export promotion body. Goods exported temporarily may be re-imported within 12 months.



Angola type approval and regulatory approval

Example of Angola INACOM certificate INACOM approval in Angola refers to the certification issued by the National Institute of Communications (Instituto Nacional de Comunicação de Angola, INACOM).

Import Customs Guide ANGOLA

FIDI Import Customs Guide ANGOLA of this publication. It is recommended to verify this information with a FIDI Affiliate prior to shipping. This document is produced based on the information supplied at the



Contact Us

For datasheets, pricing, or custom high-speed optical interconnect solutions, please visit:
<https://www.syropy.com.pl>