

Allowable loss of optical fiber





Overview

Fiber optic cable acceptable loss refers to the maximum amount of signal attenuation that can occur in a fiber optic communication system while still maintaining effective performance. To be able to judge whether a fiber optic cable plant is good, one does a insertion loss test with a light source and power meter and compares that to an estimate of what is a reasonable loss for that cable plant. Contractors often install, terminate, and certify cabling without knowing the client's specific requirements.



Allowable loss of optical fiber



Understanding Optical Loss in Fiber Networks

Insertion loss and return loss can impact fiber network performance - this post explains what they are and gives five tips to reduce their impact.

Fiber Cable Acceptable Loss: Key Factors and Guidelines

Several key factors can significantly impact the acceptable loss during the operation of fiber optic cables, which include the type of fiber optic material used, the cable



Link Loss Budget Calculator , Fiber Optic Link Loss Budget

Corning's link loss budget calculator will calculate your total link loss and tell you if your system falls within Corning's recommended guidelines.

Understanding Fiber Loss: What Is It and How to Calculate It?

This post introduces the main fiber loss types, the calculation process of link loss including fiber attenuation, connector loss, and splice loss, calculating power budget and calculating

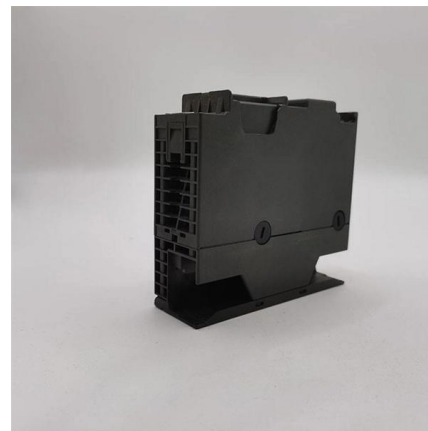


Determining acceptable loss in fiber optic cabling systems

In short, there are three primary methods that can be used to determine acceptable loss in fiber optic cabling. Loss budget calculations based

How to Calculate Fiber Optic Loss: Key Factors and

Learn how to accurately calculate fiber optic loss to ensure optimal network performance. Explore types of loss, industry standards, and step-by-step



Calculate the Maximum Attenuation for Optical Fiber Links

Practical fibers have the lowest loss at 1550 nm and the highest loss at 780 nm with all physical fiber sizes (for example, 9/125 or 62.5/125). When you





Fiber Optic Loss Budgets Calculator , Fiber Optic

Master fiber optic loss budgets with FSI's comprehensive guide. Learn calculation methods, best practices, and optimization techniques for high-performance



What is the standard for splice loss in optical fiber?

These standards specify the maximum allowable loss that can occur at a splice point in an optical fiber network. The splice loss is measured in decibels (dB) and is

Understanding Fiber-Optic Cable Signal Loss, Attenuation, and

To determine the power budget and power margin needed for fiber-optic connections, you need to understand how signal loss, attenuation, and dispersion affect transmission.



Fiber Cable Acceptable Loss: Key Factors and Guidelines

Key Factors Affecting Fiber Optic Cable Acceptable Loss Fiber optic cables are critical components in modern telecommunications and data transmission



Understanding Fiber Loss: What Is It and How to

Standards for Fiber Loss Telecommunications Industry Association (TIA)/Electronic Industries Alliance (EIA) develops TIA/EIA standards, which



Determining optical fiber link loss

The optical loss factor is dependent on wavelength--either 850 or 1300 nm for multimode fiber, or 1310 or 1550 nm for singlemode fiber. Fiber loss also varies

What is acceptable fiber loss?

Industry Standards for Acceptable Fiber Loss in Optical Systems Industry standards for acceptable fiber loss in optical systems vary depending on the specific



Guidelines Corning Recommended Fiber Optic Test

important. The OTDR trace can be used for cable acceptance, splice and connector loss, documentation, troubleshooting, fault location, optical return loss, and to measure the length of PM





Fiber Optic Cabling Loss Limits Explained - Trend

Learn about fiber optic cabling loss limits & how to calculate them. Gain insights from experts on acceptable loss for cabling projects & explore the

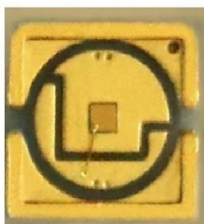


Fiber Loss Limits - How Much Loss Is Too Much in

A passive power budget is the total allowable optical loss from the transmitter to the receiver. It includes all connectors, splices, and fiber attenuation

What Is Acceptable dB Loss for Fiber Optics?

Learn what dB loss levels are acceptable in fiber optic systems, from connectors and splices to full loss budget calculations and testing methods.



Link Loss Budgets for High-Speed Fiber Optic Networks

Introduction to Link Loss Budgets in High-Speed Fiber Optic Networks In the rapidly evolving world of high-speed fiber optic networks, understanding and managing



Determining acceptable loss in fibre optic cabling systems

Using an optical power meter and light source or OLTS (Optical Loss Test Set), Tier 1 Certification can be performed against industry standard limits for cable and connectors. Both the TIA



Fiber Optic Loss Budget Calculator

Calculate your single-mode optical power budget of your transmitter & receiver set as well as passive devices with our tool

Blog

Amphenol Network Solutions blog regarding company news, product launch news, and informational posts about our industry and products.



Calculating Fiber Optic Loss Budgets

Power Budgets And Loss Budgets The terms "power budget" and "loss budget" are often confused. The power budget refers to the amount of fiber optic cable plant



Mastering Optical Fiber Loss Measurement: A Comprehensive Guide

These losses primarily include absorption loss, dispersion loss, and scattering loss. Extrinsic Optical Fiber Losses Extrinsic losses occur due to factors external to the fiber's core properties, such as



Determining Acceptable Loss in Fiber Optic Cabling

In short, there are three primary methods that can be used to determine acceptable loss in fiber optic cabling. Loss budget calculations based

Optical Fiber Loss and Attenuation , MEETOPTICS

Fiber loss, also called fiber optic attenuation or attenuation loss, refers to the loss of signal between input and output. Losses can be introduced by various means



Contact Us

For datasheets, pricing, or custom high-speed optical interconnect solutions, please visit:
<https://www.syropy.com.pl>