

Algeria ONT Optical Network Terminal QSFP28





Algeria ONT Optical Network Terminal QSFP28



100Gb/s QSFP28 ZR4 Transceiver QSFP28-100G-ZR4

Operating Environments Electrical and optical characteristics below are defined under this operating environment, unless otherwise specified.

A Comprehensive Guide to 100G QSFP28 Optical

Compared to legacy 100G form factors (CFP/CFP2/CFP4), QSFP28 modules offer a smaller footprint, lower power consumption, and higher port density. In practice,



QSFP28 Transceivers

Quad small form pluggable double density 28 (QSFP28) transceivers improve port economy and density with four lanes of simultaneous data.

Intel® Ethernet QSFP28 Optic

The QSFP28 LR4 module is designed for extended reach and supports links up to 10km of single mode fiber. When used with Intel® Ethernet Network Adapters with QSFP28 connectivity, these optics



What Is An Optical Network Terminal (ONT)? Complete Guide

Discover what an Optical Network Terminal is and how it transforms fiber signals into usable internet connections, enhancing your understanding of fiber internet setup.

What is Optical Network Terminals (ONT)?

Explore Optical Network Terminals (ONT), their functions, and how they support efficient, high-speed connectivity in modern fiber networks.



100Gb/s QSFP28 Transceivers , Optical Interconnect

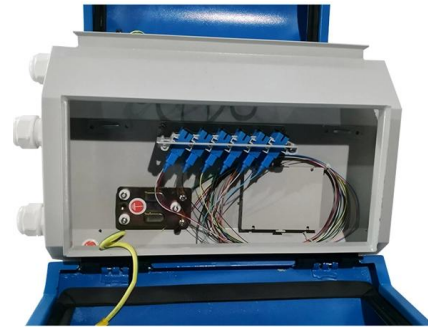
Amphenol's 100G QSFP28 optical modules include SR4, AOC, AOC break out, CWDM4, LR4, ER4 Lite, ER4 and ZR4 series, which adopt LC or MPO





A Deep Dive into the QSFP28-100G-ZR4 Optical

QSFP28-100G-ZR4 transceiver enables 100G data transmission up to 80km using single-mode fiber, ideal for long-distance, high-speed network



Data Sheet QSFP28 100G

Accurate coding: Every transceiver is correctly coded and tested 100% of the time, resulting in optics that are 33 times more reliable than both OEM and third party generics

What Is an Optical Network Terminal?

Understanding the Role of the Optical Network Terminal The modern digital landscape relies on fast, reliable internet. Fiber optic technology is at the forefront of delivering this speed and



What is an ONT (Optical Network Terminal) , IO by HFCL Blog

Optical Network Terminals have diverse applications in bringing high-speed, reliable, and efficient fiber optic connectivity to homes, businesses, and various sectors, contributing to the



Introduction to 100G QSFP28 Optical Transceiver

Nowadays, the trend for 100G Ethernet network is bullish and inevitable. Thus, the demands for 100G modules are becoming increasingly great. Among various 100G optical transceivers, QSFP28 100G



A Quick Guide to ONT (Optical Network Terminal)

Understand how an Optical Network Terminal (known as an ONT) functions, how it differs from Optical Line Terminal (OLT), and its Role in

ONT What is it and how is it used in a fiber network?

What Is an ONT? ONT stands for Optical Network Terminal. It's the device that: Connects directly to a fiber optic line run by your Internet provider
Converts that



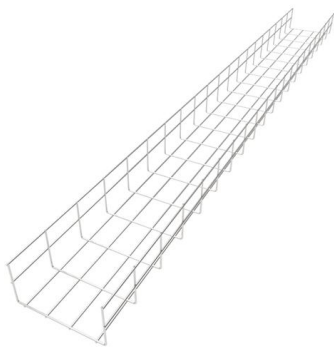
Defining ONT: Optical Network Terminal

Optical Network Terminal (ONT) explained: Dive into what they are, the parts they're made of, and how they facilitate connectivity.



Everything You Need to Know About QSFP28 Ports:

? QSFP28 essentially quadruples the throughput per lane compared to QSFP+, enabling 100G networks with minimal increase in footprint. How QSFP28



100Gb/s QSFP28 Transceivers

Amphenol's 100G QSFP28 optical modules include SR4, AOC, AOC break out, CWDM4, LR4, ER4 Lite, ER4 and ZR4 series, which adopt LC or MPO optical ports and are compatible with IEEE802.3bm,

ONTi 100G QSFP28 100GBASE-SR4 Transceiver

Transceiver module is a QSFP28 100GBASE-SR4 optical device designed for multimode fiber connections using an MPO/UPC connector. It operates at 850nm



100G BIDI QSFP28 Optical Transceivers for Long-Reach Networks

For reliable, high-performance 100G QSFP28 BIDI optical modules, trust Aerech Networks. Our line of 100G single-fiber transceivers for 10-80 km offers certified compatibility, low power consumption,



QSFP28 O-Band WDM Transceiver Solutions

Features & Benefits: First multiplexing O-Band up to 8 channels to provide a full solution for 100G PAM4 optics. Reach up to 100G to 40km without

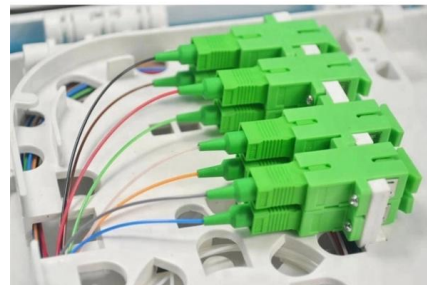


100G QSFP28 Single? : Optical Transceiver Module , NEC

The NEC's 100G QSFP28 optical transceiver that enables high-speed data transmission of 100Gb/s. We offer a diverse range of options that support

What Is a 100G QSFP28 Optical Transceiver?

By fiberlife. Posted on July 15, 2024 The 100G Ethernet network is experiencing a robust and unstoppable growth trend, leading to a surge in



PRODUCT CATEGORY				
Open rack Series	2U rack	12U 48-port open rack	18" Open rack	Adjustable Depth Open rack
Wall mount rack Series	Glass door wall mount rack	Mesh door wall mount rack	Double section wall mount rack	Economic type wall mount rack
Floor standing server rack	Glass door with casters	Mesh door with casters	42U Standard Server rack	Double open door Server rack
Outdoor cabinet	air conditioner Outdoor cabinet	Outdoor cabinet with plinth	Outdoor cabinet with fan cooling	Double Wall Outdoor cabinet
Splitter series	Bare Fiber Splitters	Blackless Fiber Splitters	ABS Splitters	Plastic Splitters
Splitter series	LC/LC Splitters	Rack Mount Splitters	Mini Plug-in Type Splitter	Tray Splitters
Patch cord series	LC-LC	SC-SC	FC-FC	LC-LC
FTTH product series				

QSFP28 optical transceivers , Smartoptics

By providing four lanes of 25G, QSFP28 enables a streamlined upgrade path from lower-speed networks, making it a popular choice for scaling data center



100G QSFP28 Transceiver Modules , Optical

FS offers a growing portfolio of 100G QSFP28 modules. The 100G QSFP28 module solution provides high-performance 100GbE connectivity for data centres,



What is ONT? Everything You Need to Know

ONT, short for Optical Network Terminal, is a vital component in fiber-optic communication systems. It acts as the endpoint device in a fiber-to-the-premises (FTTP) setup, translating optical

What Is An ONT? - A Quick Guide

The Optical Network Terminal (ONT) is a cornerstone of contemporary fiber-optic communication networks. As the intermediary between



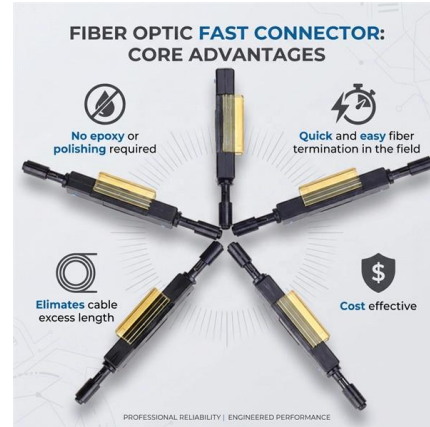
Overview of QSFP28 LR4 Optical Transceiver

The QSFP28 LR4 is a hot-pluggable, four-channel, and full-duplex optical transceiver module designed for long-distance transmission up to 10 km in



QSFP28 Transceiver: The Ultimate 100G Optical Module Guide

The 100GBASE-LR4 QSFP28 transceiver is designed for long-haul fiber optic communications and is widely used in high-performance networks. It works with single-mode fiber



Contact Us

For datasheets, pricing, or custom high-speed optical interconnect solutions, please visit:
<https://www.syropy.com.pl>