

Algeria Data Center Hot Aisle Construction Case





Algeria Data Center Hot Aisle Construction Case



Data Center Cooling in a Desert Nation: Algeria's Unique

Algeria's data center expansion faces a critical thermal challenge: summer temperatures exceed 45C in the south, degrading PUE from 1.3 to 1.8+ and making cooling the single largest

Data Center Design: Hot Aisle & Cold Aisle - Length

Efficient airflow management in data centers relies heavily on proper Hot Aisle and Cold Aisle configurations. To maintain thermal performance, equipment



What To Know About Hot-Aisle, Cold-Aisle, And Chimney Data Center

Containment systems are used in modern data centers to isolate the hot discharge air from the cooler supply air, managing cooling by separating the airflow. This separation of hot and

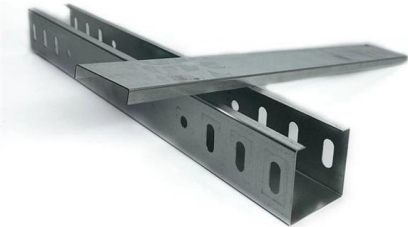
Week 11: Hot Aisle Cold Aisle Containment for Data Center

Week 11: Hot Aisle Cold Aisle Containment for Data Center AIM: To set the case set up and run the simulation of Hot Aisle and Cold Aisle Containment of



Hot Aisle Containment in Data Centers , Subzero

Hot aisle containment configures for virtually any data center environment regardless of ceiling type, height, or existing infrastructure. Custom configurations



Algeria Data Center Infrastructure Market

Northern Algeria dominated the Algeria Data Center Infrastructure Market with a 63% share in 2025, supported by urban density, subsea connectivity, and national



Hot Aisle Containment - Altimir

Companies install Hot Aisle Containment (HAC) systems to increase data center efficiency and cut power consumption costs. HACs are ideal for both raised floor





Hot Aisle Containment System , Profile Solution

We offer a wide range of customizable hot aisle containment solutions with integrated cable tray systems to meet specific client requirements and optimize data center



Impact of Hot and Cold Aisle Containment on Data Center

This paper examines both methodologies and highlights the reasons why hot-aisle containment emerges as the preferred best practice for new data centers.

Hot Aisle & Cold Aisle Containment Solutions & Case

The document discusses hot aisle and cold aisle containment strategies for data centers, highlighting their importance in improving airflow management and



Hot Aisle Containment Systems Market in Algeria , Report

The Algerian market for Hot Aisle Containment (HAC) systems is at a nascent but pivotal stage of development, characterized by a growing recognition of energy efficiency and data center



Hot Aisle vs Cold Aisle Containment: Full Guide

Hot aisle vs cold aisle containment -- compare both strategies, understand the pros and cons, and find the right cooling solution for your data



Analysis of Various Hot Aisle Containment Panels and

The use of hot and cold aisle containment systems is a common tactic to ensure that the inefficient mixing of air does not occur in data centers. The

Accelerate Hot-Aisle Containment Buildout

Temporary data center hot aisle containment uses modular construction walls to separate hot and cold air streams during build-outs or commissioning. STARC's LiteBarrier® system enables "test-as-you



Cold & Hot Aisle Containment For Data Center Efficiency

Learn how cold and hot aisle containment improves airflow, reduces energy use, and boosts reliability in data centers. Backed by CFD insights from



Hot Aisle Containment in Data Centers , Subzero

Hot aisle containment in data centers can double the cooling capacity & increase data center efficiency by 30% or more. Learn more here!



Hot aisle/Cold Aisle Containment in Data Centers For Most Energy

Hot aisle/Cold Aisle Containment in Data Centers For Most Energy Efficiency Nandini Mouli, Ph.D. eSai LLC Contractor to TRC Dominion Energy-VA Programs 6/24/25

Cold Aisle Containment in Data Centers , Subzero

Cold aisle containment systems use doors at aisle ends, ceiling panels or lids above racks, and structural frames to create enclosed zones where cold supply air flows



Optimizing Thermal Performance in Data Centers: A

This article presents a comparative evaluation of HAC and CAC, underpinned by Computational Fluid Dynamics (CFD) simulations, field data, and

Hot and Cold Aisle Containment in Data



Discover what hot and cold aisle containment is all about. Data centers are often made up of hot and cold aisles. Overall efficiency can be impacted by



Hot and Cold Aisle Rack Optimization/Data Center

Read our case study on how we optimize airflow and control temperature in data centers' hot and cold aisle cabinets to maintain proper IT operating conditions.

The Advantages And Disadvantages Of Hot-Aisle, Cold

But there are some disadvantages to cold-aisle containment. Allowing the discharge air from the hot aisle to fill the room results in temperatures



Implementing Hot and Cold Air Containment in Existing Data Centers

Executive summary Containment solutions can eliminate hot spots and provide energy savings over traditional uncontained data center designs. The best containment solution for an existing facility will



Accelerate Hot-Aisle Containment Buildout

In a 160,000-square-foot project, E& K of Phoenix replaced slow, wasteful stick-built barriers with STARC's LiteBarrier system -- accelerating data center hot aisle containment build-outs, cutting



Exploring the Dynamics of Data Center Hot Aisle Containment

Understanding these market dynamics enables better decision-making. As the landscape evolves, staying informed and data-driven is crucial for optimizing investments in hot aisle

Contact Us

For datasheets, pricing, or custom high-speed optical interconnect solutions, please visit:
<https://www.syropy.com.pl>