

Airport cable tray installation height





Overview

Clearances: Maintain at least 12 inches of vertical clearance above trays for installation and maintenance access (2026 NEC update). These systems, made from metal or plastic, are open structures designed to support electrical conductors, ensuring proper organization and safety. The information has been organized for use as a reference guide for both those unfamiliar and those experienced with cable tray. Cable ladder systems and cable tray systems shall be manufactured in accordance with BS EN 61537, channel support.



Airport cable tray installation height

Best Practice Guide to Cable Ladder and Cable Tray Systems



Introduction This publication is intended as a practical guide for the proper and safe* installation of cable ladder systems, cable tray systems, channel support systems and associated supports.

ORDER 6480

This order sets forth guidelines and fundamental requirements for design of airport traffic control towers (ATCTs) and terminal radar approach control (TRACONS) facilities to be used by engineers,



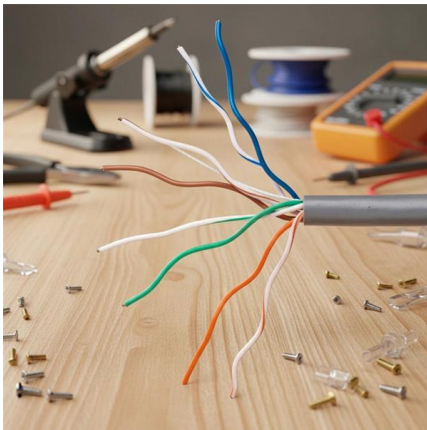
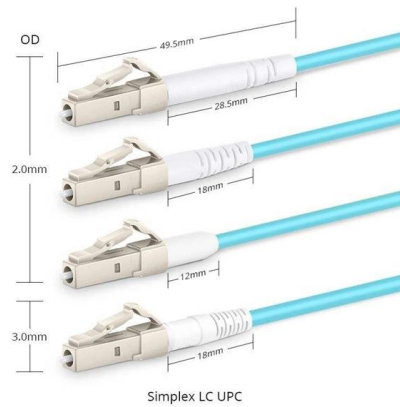
Cable tray manual

Where the cable type may be used, cable tray may be installed to support it except as per Section 392.12 which states that cable trays shall not be installed in hoistways or where subject to severe



Cable Tray and its types & Sizes

A cable tray is a type of a containment used to support insulated electrical cables used for power distribution, control, and communication.



Cable Tray Questions , Cable Tray Institute

Are you aware of any industry standard that may mandate the use of cable trays under raised floors, particularly, power and signal cables?
Answer: We are not aware of such industry standard, but

Cable Tray Spacing Standards for Installation and Safety

Proper installation can significantly reduce electromagnetic interference, prevent fire hazards, and improve overall efficiency. This article



CABLE TRAY INSTALLATION PROCEDURE

On vertical cable trays and on edgewise - horizontal cable trays, each cable shall be fixed with 20mm wide stainless steel strips (two per meter). On horizontal cable



Important design considerations for cable ladder and

Ladder and tray systems differ slightly from conduit and trunking systems in that they are not enclosures, and they do not provide mechanical



Cable Tray Technical Guide A practical guide to product selection and

Cable tray length is selected based on the load to be supported, the distance between the supports (also referred to as the span), and handling and installation constraints.

Rooftop Cable Tray Support System

PHP's cable tray support system is engineered to sustain various sizes of cable runs on your rooftop. PHP is the leader in cable tray support systems.



A Guide to Installing and Supporting Electrical Cable Trays

This guide covers the critical steps, from selecting the right electrical cable tray and performing accurate cable fill calculations to managing a safe cable pull through



Guide to cable support systems

A cable support system consists of cable support lengths and system components, such as cable support fittings, support elements, mounting elements and system accessories. The cable support



Busway and Cable Tray Installation

Cable Tray Installation is the process of installing a structural system to securely fasten and support cables and raceways. It involves calculating angles and bends as well as measuring and cutting

Cable Tray Technical Guide A practical guide to product selection and

A practical guide to product selection and installation This guide for engineers and installers has been developed by ABB as a practical reference regarding cable tray characteristics, installation, and



HT & LT Cable Laying Method Statement

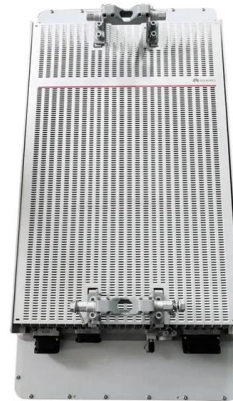
AIRPORT, HYDERABAD This document provides a method statement for laying high voltage and low voltage cables at double height areas during the expansion





Best Practice Guide to Cable Ladder and Cable Tray Systems

Cable ladders and cable trays should be mounted far enough off the floor or roof to allow the cables to exit through the bottom of the cable ladder or cable tray.



Metal Cable Tray Installation Guidelines , Cable Tray Institute

The Cable Tray Institute is making available the current edition of this practical guide for the proper installation of aluminum or steel cable tray systems. These guidelines will be useful to engineers,

Electrical Cable Trays for Airport Safety

Electrical cable trays for airports increase the neatening of the cables and the order of their placement, which reduces disconnections, accidents and maintenance time.



Cable Tray Installation Specifications , PDF , Sheet

This document provides installation guidelines for cable trays, including: 1) Cable trays come in perforated and ladder types, with perforated trays made of steel



Understanding NEC Article 392

Master cable support systems with Understanding NEC Article 392: The Infrastructure. Learn safety rules and installation codes for commercial cable trays.

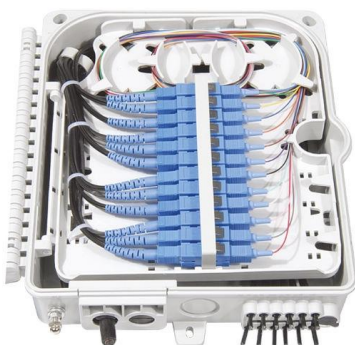


Essential guide for Cable Tray Installation in Data Centres

Essential guide for Cable Tray Installation in Data Centres. Learn planning, materials, types, installation steps, safety, and maintenance for data halls.

Cable Tray

Cable trays with a rail height of 60 mm, in widths of 100 to 300 mm (RS 60.100 OV - RS 60.300 OV) are used for ceiling and wall mounting. The cable trays are



Use of Perforated Cable Trays in Airports and Railway Stations

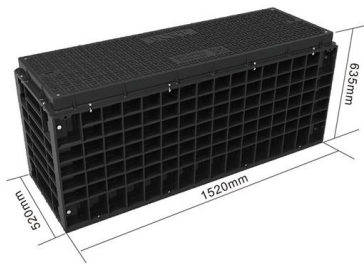
3. Can perforated trays be customised to suit specific needs in airports and railway stations? Yes, perforated trays can be customised to suit specific needs in airports and railway

cable tray technical specifications

cable tray Surfaces of system components which are likely to come into contact with cables during



installation are inspected to ensure they shall not cause damage to the cables when installed correctly.

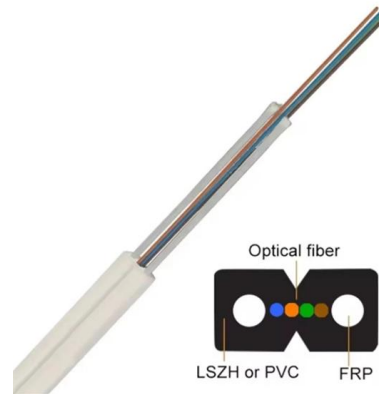


Cable Tray Dimensions and Specifications as per NEC

Many electrical systems employ cable trays. They route cables safely & efficiently. NEC defines minimum cable tray size & electrical installation

Cable Tray Installation Rules (NEC 392) - Electrical Trader

The 2026 NEC introduced an important update: cable trays must have at least 12 inches of clear vertical space above them to allow for installation and maintenance access.



Cable Tray Systems: Requirements and Best Practices

Comprehensive guide to cable tray systems requirements: tray types, materials, loading, supports, bonding, routing, and best practices for safe electrical cable management.



Contact Us

For datasheets, pricing, or custom high-speed optical interconnect solutions, please visit:

<https://www.syropy.com.pl>