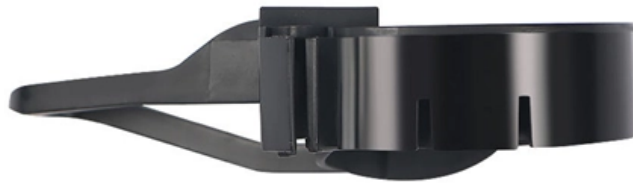


Adjustable Attenuator Power Supply Circuit Diagram





Adjustable Attenuator Power Supply Circuit Diagram

Fully Adjustable Power Supply Circuit Diagram



Fully Adjustable Power Supply Based on a National Semiconductor application note, this circuit uses an LM317 3-terminal regulator (REG1), chosen because of its built-in over-current and over-temperature

Adjustable or Variable Power Supply Circuit Diagram (0

Here in this article, we will see the circuit diagram of an Adjustable or variable power supply. We can adjust the output voltage level as per our



LM723 0-30 volts adjustable power supply circuit

This adjustable power supply build around LM723 provides output voltage between 0 and 30 volts at a maximum current of 1 Amp. Because the



Adjustable DC Power Supply Circuit using LM317

IntroductionProject ConceptWorking PrincipleOutput Voltage Calculation For LM317This circuit consists of a few key components which are the main foundation of the circuit. These key components are Step down



transformer, Bridge Rectifier, Smoothing Capacitor, LM317 Variable Voltage Regulator, and potentiometer. The Step-down transformer is used to steps down the high voltage AC mains input into low voltage AC output. The Bridge See more on electroduino Electronics DIY

LM317 Adjustable Power Supply - Electronics DIY

All the circuits discussed below require an unregulated input voltage (max. 35 Volts) from any standard transformer/bridge/capacitor network. Let's try to understand



Attenuator Circuit Designs: Passive to Programmable

Attenuator design: covering passive resistor-divider to advanced programmable designs, with different types, and methods of functionality..

Passive Attenuator Basics

Passive Attenuator Basics An Attenuator is a special type of electrical or electronic bidirectional circuit made up of entirely resistive elements. An attenuator is a two port resistive network designed to



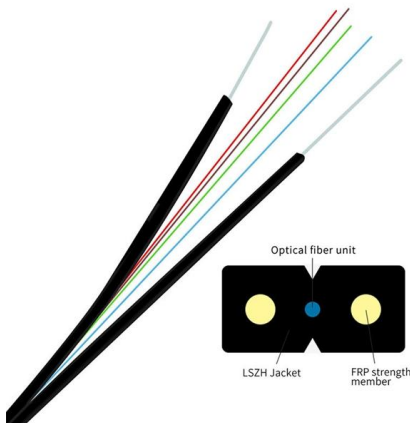
Adjustable 0-100V 50 Amp SMPS Circuit Diagram

Adjustable 0-100V 50 Amp SMPS Circuit Diagram The switching supply is powered with IGBT transmitters and is further controlled by UC3845



LM317 Adjustable Power Supply Circuit - Making Easy

The circuit diagram demonstrates,, how the LM317 can be effectively used to generate variable voltages and currents based on your needs. A 5K



Building an Adjustable DC Power Supply: A Schematic

Looking for an adjustable DC power supply schematic? Find a detailed guide on building your own adjustable DC power supply and learn how to customize the

0-40V Adjustable Power Supply Circuit Diagram

PCB Layout for the 40V power supply circuit
CONSTRUCTION The suggested PCB layout for this 0-40V variable power supply circuit must be



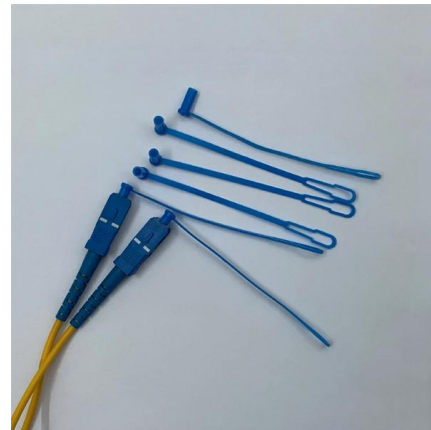
(PDF) Adjustable DC Power Supply



In general at the input of the power supply there is a power transformer. It is followed by a rectifier (a diode circuit) a smoothing filter and then by a voltage regulator circuit.

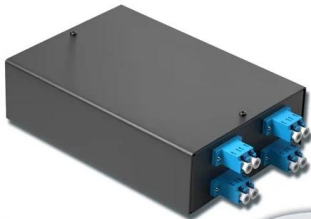
One moment, please

One moment, please Please wait while your request is being verified



4-port 8-core LC wall-mounted fiber terminal box (empty frame)

Surface painted Scientific plate fiber Cold-rolled steel plate



Lifetime quality assurance

Free shipping

Customizable for telecommunication

Attenuators

Learn about attenuators, their types, applications, design equations, and key concepts related to signal reduction and characteristic resistance.

Adjustable power supply - Electronics Projects Circuits

Apart from the power supply, different battery cells can be charged with current limitation By pressing the "Lock" button, voltage stabilization is turned





Simple Circuit Diagram for Line Level Attenuator

Understanding the line level attenuator schematic allows users to troubleshoot and modify the circuit for specific applications. In conclusion, comprehending the line



Resistive Attenuator

The Passive Attenuator is a purely passive resistive network (hence no supply) which is used in a wide variety of electronic equipment for extending the dynamic range of measuring equipment by adjusting



Adjustable DC Power Supply Circuit using LM317

Introduction to Adjustable DC Power Supply, Project Concept, Block Diagram, Components Required, Circuit Diagram, Working Principle.

Attenuators

The attenuator could be built into the signal generator, or be a stand-alone device. It could provide a fixed or adjustable amount of attenuation. An attenuator section





LM317 Adjustable Power Supply Circuit

This document describes an adjustable power supply circuit using an LM317 voltage regulator IC. The circuit steps down 230V AC household voltage



0-40V Adjustable Power Supply Circuit Diagram

The suggested PCB layout for this 0-40V variable power supply circuit must be utilized since construction is in so doing tremendously simplified. The

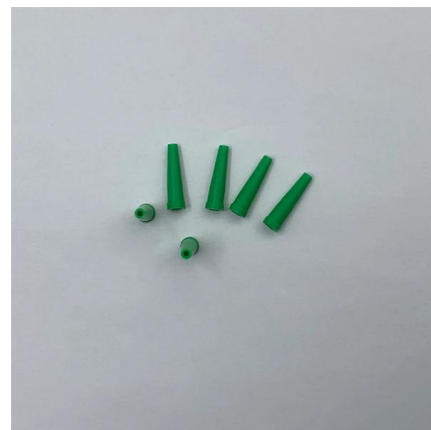


DC power supply circuit diagrams list

Here is an efficient 4-stage stabilised power supply unit for testing electronic circuits. It provides well regulated and stabilised output, which is essential for most electronic circuits to give proper results.

Power Tips: How to Create an Adjustable Output Power Supply

Using AVS allows the processor to optimize the core voltage, thus improving performance and reducing power dissipation. This is just one example of how to create an adjustable-output power supply.





Attenuators , Lessons in Electric Circuits: Volume III

Attenuators weaken or attenuate the high level output of a signal generator, for example, to provide a lower level signal for something like the antenna input of a



Design for an adjustable power supply circuit

Learn how to build an adjustable power supply with this detailed circuit diagram. Perfect for electronics hobbyists and DIY enthusiasts.



Contact Us

For datasheets, pricing, or custom high-speed optical interconnect solutions, please visit:
<https://www.syropy.com.pl>