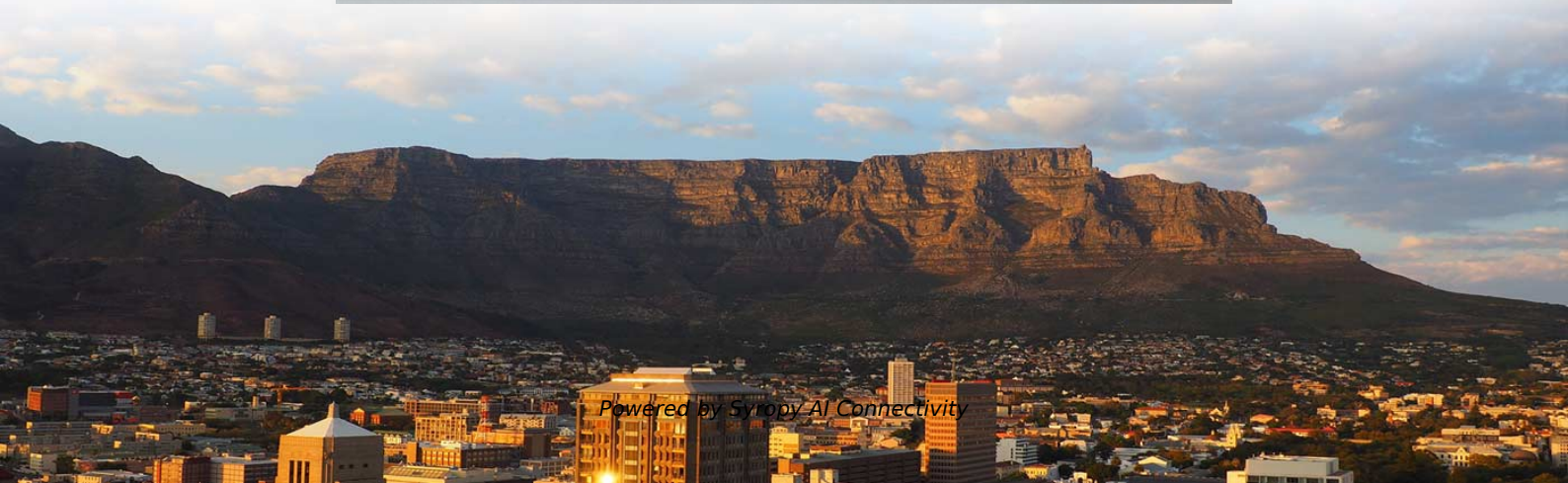
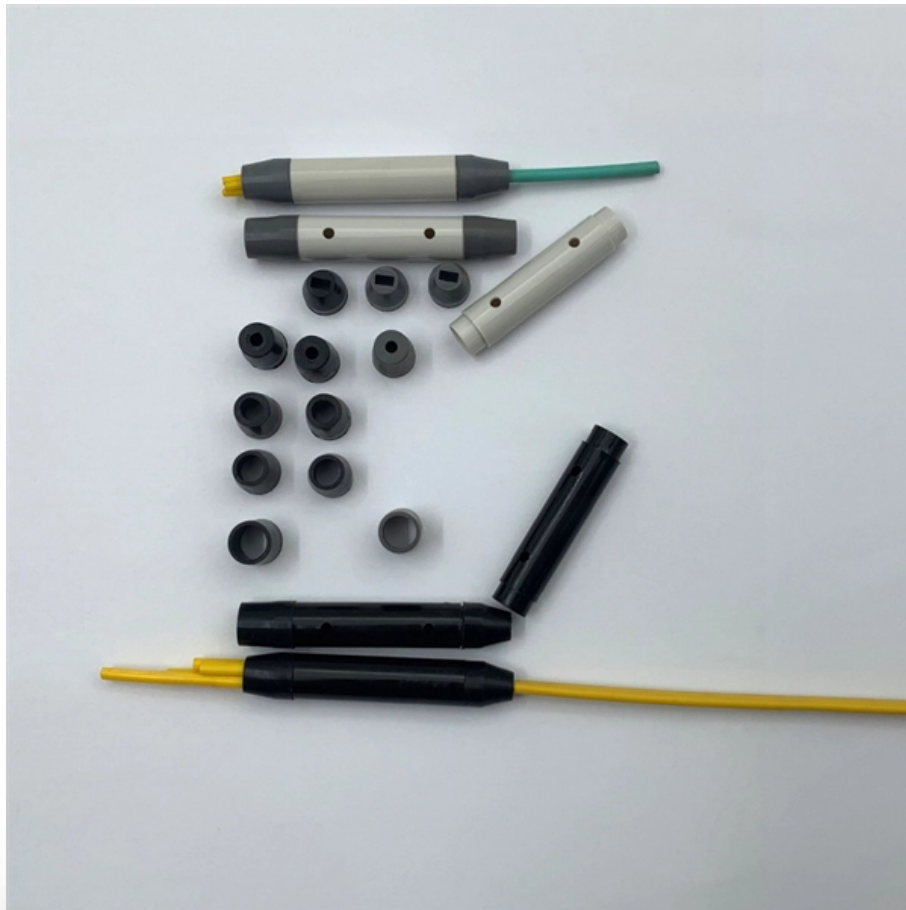


Actual picture of the small busbar on the top of the cabinet





Actual picture of the small busbar on the top of the cabinet



Understanding Electrical Ground Bus Bar: An Ultimate

Explore everything you need to know about the electrical ground bus bar, a critical component for safe and efficient electrical systems.

Electrical busbar system

Electrical busbar systems (sometimes simply referred to as busbar systems) are a modular approach to electrical wiring, where instead of a standard cable wiring to



IEC Standard For Busbar Sizing: Complete Guide To

Learn the IEC standard for busbar sizing as per IEC 61439, including current-carrying capacity, temperature rise limits, and design criteria for safe and



What is a bus bar panel?

What is the purpose of a busbar? Tangled in complex high-current wiring? Busbars streamline power distribution, making panels cleaner, safer, and



Busbar

The copper busbar is the connection between the main switch in the electric cabinet and the switch in each shunt circuit. The copper or aluminum row is connected.



Busbar

In electric power distribution, a busbar (also bus bar) is a metallic strip or bar, typically housed inside switchgear, panel boards, and busway enclosures for



What is a Busbar? A Detailed Guide

A busbar is a metallic strip or bar used in electrical power distribution. Gain insight to protect your facility through proper power distribution knowledge.





Busbar Power Distribution Explained: Benefits, Types,

Discover the benefits, types, and applications of busbar power distribution systems. Learn why busbars offer efficient, safe, and space-saving



How a Breaker Panel Bus Bar Works

Learn how the electrical bus bar distributes power, differentiates voltage roles (hot, neutral, ground), and signals damage inside your breaker panel.

218 Electric Power Distribution Bus Bar Stock Photos

Search among 218 authentic electric power distribution bus bar stock photos, high-definition images, and pictures, or look at other bus bar or bus bars stock images



Typical Structure Of The Cabinet

Learn about the essential features of a cabinet in control systems, including safety, support, and visual appeal.



2,291 Busbar Royalty-Free Images, Stock Photos & Pictures

Detail view of copper busbars in electrical installation showcasing energy infrastructure. Close up on the panel busbar installation in the electrical cabinet.



Busbars: why you should install underfloor power , CMD

Read why busbars are ideal for offices with raised access floors. Learn how they work, how to install them and how they compare to normal cabling systems.



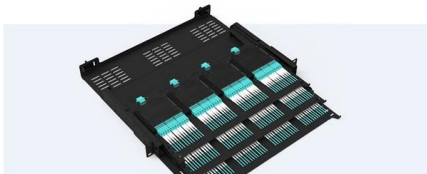
What Is A Busbar - Power Distribution In Electrical

A busbar is a rigid conductor, typically made of copper or aluminum, that serves as a common connection point for multiple circuits within electrical enclosures. It



Pre-Terminated Patch Panel

- Standard 19" width
- Max 144 fibers in 1U
- Ultra-High Density Ready



Dual-sail, easy install & maintain



Lightweight ABS 4000 Luvolite



Premium sheet metal with multi coating

Busbar

Busways, or bus ducts, are long busbars with protective covers. Rather than branching from the main supply at one location, they allow new circuits to branch



How to Install Bus Bars in Electrical Panels: A Step-by-Step Guide

Take you through the entire installation process, from understanding bus bars to choosing the right type, ensuring safety, step-by-step installation, and long-term maintenance.



Switchboard Construction Basics For Engineers , EEP

The role of a switchboard is to divide the main current provided to the switchboard into smaller currents for further distribution and to provide switching,



Busbar Circuit Diagram

At first glance, a busbar circuit diagram may look like a jumble of lines and symbols, but upon closer inspection, it reveals the intricate connections and pathways that deliver electricity to



Function of the small busbar on top of the high-voltage cabinet

The small busbar at the top of the high-voltage cabinet plays a crucial role in the power system. It is not only a key channel for signal transmission and auxiliary power supply but also an important basis for





Switchboard Busbar Guide (2025): Design & Standards

A busbar is a metallic bar or strip--typically copper or aluminum--mounted inside switchgear/switchboards to distribute high currents.

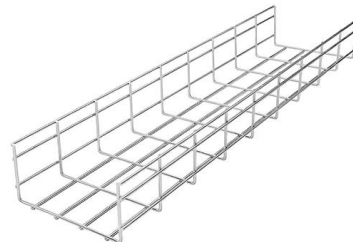


Understanding Electric Bus Bars: Functions, Types, and

Explore the functions, types, and applications of electric bus bars while discussing their advantages, materials, and safety considerations.

Switchgear cabinet installation >> FTG - Friedrich Göhringer

As seen in the small distributor in the right picture. Here, the Pan Assembly busbar is used to save space in tight applications. Also, the feed is not done from below but above the pins of the busbar.



What is a bus bar panel?

Busbars streamline power distribution, making panels cleaner, safer, and easier to manage for demanding electrical loads. The purpose of a busbar is



12,362 Free images of Electrical Panel Busbar

Electrical panel busbar photos for download. All pictures are free to use. Find images of Electrical Panel Busbar Royalty-free No attribution required High quality images.

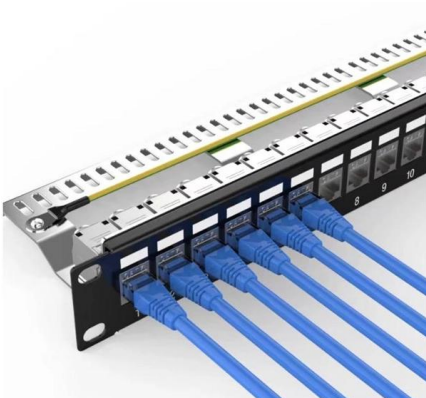


What is a Circuit Breaker Busbar?-Complete Guide

Discover what is a circuit breaker busbar is and why it's important for power distribution. Our easy guide covers everything from the basics to safe installation.

Step-by-Step Busbar Installation Guide , Artizono

Imagine transforming a chaotic web of electrical connections into a streamlined, efficient powerhouse. Busbars are the unsung heroes of electrical

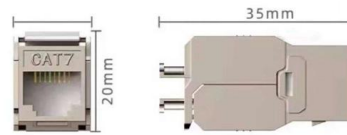


Busbar Design Guide

Typical Busbar Sizes If this program recommends sizes that do not fit into the ranges below, change either the number of conductors or the section thickness of the busbar and recalculate the minimum

70+ Electricity Busbar Copper Control Panel

Search from 76 Electricity Busbar Copper Control Panel stock photos, pictures and royalty-free images from iStock. Get iStock exclusive photos, illustrations, and more.



What is Busbar? Types, Advantages (2026 Updated Guide)

Busbar is a metal strip or rod, usually made of copper, brass or aluminum, used for grounding and conducting electricity. It is divided into flat

Busbar hi-res stock photography and images

Find the perfect busbar stock photo, image, vector, illustration or 360 image. Available for both RF and RM licensing.



Contact Us

For datasheets, pricing, or custom high-speed optical interconnect solutions, please visit:
<https://www.syropy.com.pl>