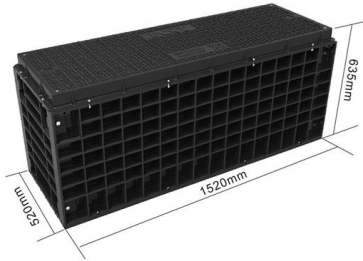


Actual access power of network switches





Actual access power of network switches

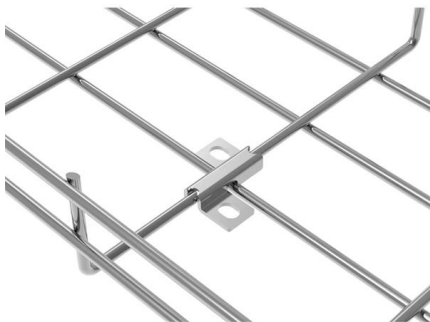


Demystifying Ethernet Switches: Key Concepts

What are the different types of ethernet switches available in the market? Ethernet switches come in various types, including Unmanaged

What is a Network Switch? , Explained Working, Types

Unlock the power of network switches with this in-depth whitepaper. Know the Types of Network switches, Architecture, and guidelines to choose suitable switches for



Network Switch Power Consumption Explained

The energy consumed per unit by a switch is an important factor for a buyer to know. Power used by a switch differs not only based on its type and configuration but also on the IEEE

How Does a Switch Work?

Switches are key network building blocks. Learn how does a switch work to securely connect your small business to the rest of the world and connect your devices.



A Comprehensive Overview of Ethernet Switch Port Types

Confused about SFP, QSFP, or combo ports? This guide explains Ethernet switch port types including RJ45, SFP/SFP+, SFP28, QSFP+/QSFP28,

How Does a Switch Work - The Complete Networking

Learn how does a switch work in networking. Discover types, functions, and how switches enable secure data transfer across networks.



What is a Network Switch and How Does it Work?

Uses of Network Switches Network Switches are an important part of Network communication. Some of the use cases are mentioned below. Network



Calculate Total Power Consumption on Catalyst 9300

Network engineers are required to obtain accurate, real-time data on how much power (in watts or milliwatts) is being used by the system as a whole, as well as by individual stack members, including



This is the power consumed by an always-on network

In this case, we're talking about a power output that can range from 10 to 100 W or even more, depending on the model. However, the power consumption will

What Is The Switching Capacity Of A Network Switch?

This concept is crucial in understanding the performance and capability of network switches. In a world where data transfer is a pivotal aspect



SMB Network Design: Core vs. Distribution vs. Access Switches

Don't overspend on network hardware. Our expert guide explains core, distribution, and access switches so you can design the right network for your SMB.

Do network switches use a lot of



electricity?

Do Network Switches Use a Lot of Electricity? A Deep Dive The question of network switch power consumption is more nuanced than a simple



How Do I Find Power Draw/Consumption For Network

Aside from choosing a network grade line interactive or online UPS, you may also want to consider an Automatic Transfer Switch as well if you wish to



Understanding Access Switches: Key Components of

Explore the role of access switches in your LAN setup. Understand their key components, functions in the access layer, and how they integrate into



Do network switches use a lot of electricity?

While a single network switch might not seem like a power hog, the cumulative effect, especially in larger networks, can be significant. Let's break



Understanding actual switching capacity of network

I was recently comparing the performance of Mikrotik and Arista switches by looking at their spec sheets. This is not a fair or meaningful



The best network switch of 2025 , TechRadar

The best network switch will be a necessity for anyone looking to add more wired connections and gain greater network speeds.



Do All Ethernet Switches Need Power? Understanding

But an important question often arises: Do all Ethernet switches actually need power? While the answer may seem obvious, it's worth exploring



Detailed power consumption values of Ethernet switches

We propose a simple traffic model covering temporal and spatial traffic variation and investigate the impact of (controlled) traffic variations on energy savings achieved



Different Types of Network Switches

There are several types of network switches and understanding the differences can help you make the right choices for your small business.



How To Analyze Network Switch Performance: 7 Key

Learn how to analyze network switch performance with 7 key metrics. Compare throughput, latency, packet loss & more to choose the right switch for

Understanding the Role of an Access Switch in Your

Explore the crucial role of an access switch in your network. Learn how it connects end-users and devices via Ethernet, enhancing overall performance.



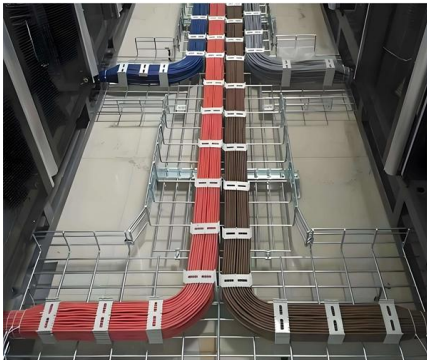
Core Switch vs. Distribution Switch vs. Access Switch

Core Switch vs. Distribution Switch vs. Access Switch: Understand Their Roles in Ethernet Networks Ethernet networks are growing and becoming more complex,



PoE Power Budget: How Much Power Do You Need?

The tool then shows your required power budget, potential voltage drop, and recommended switch configurations. This helps reduce guesswork and prevents



FS Access Switches Selection Guide for Your Networks

In today's interconnected world, choosing the right access switch is crucial for ensuring efficient network performance. This guide will help you

Network switch

A network switch (also called switching hub, bridging hub, Ethernet switch, and--by the IEEE -- MAC bridge) is networking hardware that connects devices on a



Best Network Switches: Add Ports, Speed to Your

We tested several network switches to help find the right one for your needs and budget.



NVIDIA Announces Spectrum-X Photonics, Co

NVIDIA today unveiled NVIDIA Spectrum-X(TM) and NVIDIA Quantum-X silicon photonics networking switches, which enable AI factories to connect



Contact Us

For datasheets, pricing, or custom high-speed optical interconnect solutions, please visit:

<https://www.syropy.com.pl>