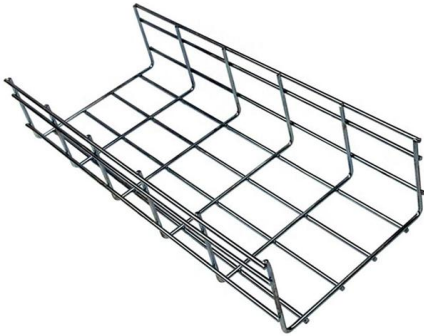


Access Switch Configuration Method





Access Switch Configuration Method



Switch Concepts and Configuration

In order to specify the majority of the parameters on the SWITCH 1 command line interface, we must switch to global configuration mode. Enter the

Configuring Access and Trunk Interfaces

Configuring Access and Trunk Interfaces Ethernet interfaces can be configured either as access ports or trunk ports. Trunks carry the traffic of multiple VLANs over a single link and allow you to extend



Switch Access Setup Guide , General Practice and Common Mistakes

Finally, document the configuration for future reference and troubleshooting. Following these best practices will help ensure a stable and secure access switch setup. Conclusion: This concludes our

Configuring VLANs on Cisco Switches

Master configuring VLANs on Cisco switches. Learn to configure Access and Trunk ports, and Native VLANs and Allowed VLAN Lists. Learn to verify with show



Configuring Access and Trunk Interfaces

Configuring Access and Trunk Interfaces This feature is supported on all the directly connected Ethernet and EtherChannel interfaces of the Cisco Nexus 5000 Series switch.

switch security best practices.PDF

For each 802.1x switch port, the switch creates TWO virtual access points at each port The controlled port is open only when the device connected to the port has been authorized by 802.1x



Configuring Switch-Based Authentication

Preventing Unauthorized Access to Your Switch You can prevent unauthorized users from reconfiguring your switch and viewing configuration information. Typically, you want network administrators to have





Switch Configuration

A5: Access the switch's interface, navigate to the management settings, and enable remote management access. Configure the desired remote management protocols, such as SSH or Telnet,

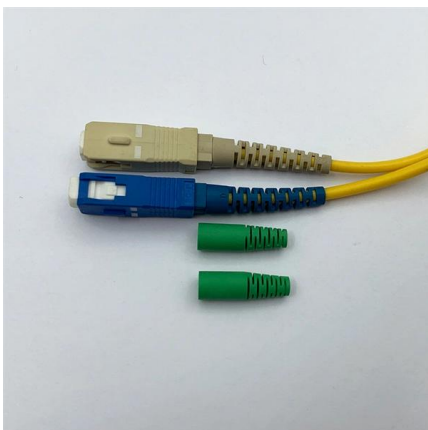


FS Access Switches Selection Guide for Your Networks

In today's interconnected world, choosing the right access switch is crucial for ensuring efficient network performance. This guide will help you

How to Configure a Cisco Switch in 10 Steps

In this step-by-step guide, we walk you through configuring Cisco



Understanding the Role of an Access Switch in Your

Explore the crucial role of an access switch in your network. Learn how it connects end-users and devices via Ethernet, enhancing overall performance.



Guide to Basic Switch Configuration , Auvik

Switch configuration on your own can seem like a daunting task. Use this handy guide to get your network switch up and running with ease.

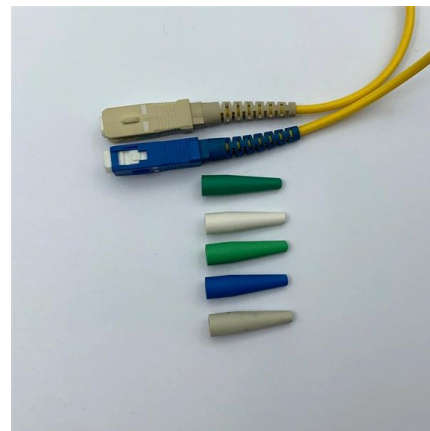


Basic Switching Concepts and Configuration

Switches are used to connect multiple devices together on the same network. In a properly designed network, LAN switches are responsible for directing and controlling the data the flow at the access

Wireless AP and AC Configuration Methods

Wireless AP and AC Configuration Methods: A New Perspective for Traditional Industries' IoT Transformation With the rapid development of Industrial Internet of Things (IIoT), traditional



How to Configure Your Cisco Switch: Step-by-Step Guide

Setting up a Cisco switch for the first time can seem like a daunting task, especially if you're not familiar with network equipment. However, with the right guidance and a bit of practice,

What is Access Port in Switch?



Learn exactly what the Access port is, which we often hear about in switch network devices. Discover how to set up these ports in your LAN!

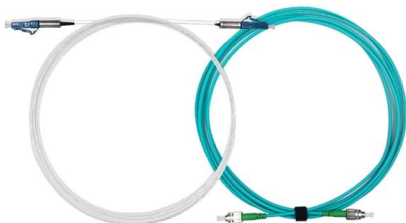
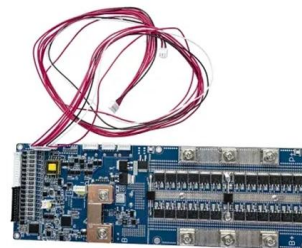


8 Steps to Configure Your Network Switch

Follow these simple best practices to set up a new network switch. Just like riding a bicycle, nobody's born knowing how to setup a network switch. And this process is a little more advanced than, say,

Switch Access Setup Guide , General Practice and Common Mistakes

This article focuses on the generic switch access setup guide and also explains the common mistakes



How to Configure Cisco Switches: A Step-by-step Guide

How to configure a Cisco switch? In this step-by-step guide, we'll configure a Cisco Catalyst Switch. Catalyst series is a well-known family of



How to Configure Cisco Switches: A Step-by-step Guide

There are two different interfaces to configure a Cisco switch, via the modern Web Console or through the more versatile Cisco IOS Command-Line



How to Configure a Cisco Switch (step by step)

If you're looking to configure a switch for the first time, this post is for you. Learn step-by-step configuration commands for Cisco IOS Switches.

S Series Campus Switches Quick Configuration.pdf

This document describes how to log in Huawei S series switches for the first time and fast configure the switches, and describes the procedures of configuring unconfigured switches in three



Basic Switch Configuration Guide with Examples

This tutorial explains basic switch configuration commands in detail with examples.



Security Configuration Guide, Cisco IOS XE Bengaluru 17.4.x

Secret password type 4 is not supported.
Information About Controlling Switch Access with Passwords and Privileges This section provides information about controlling switch access with

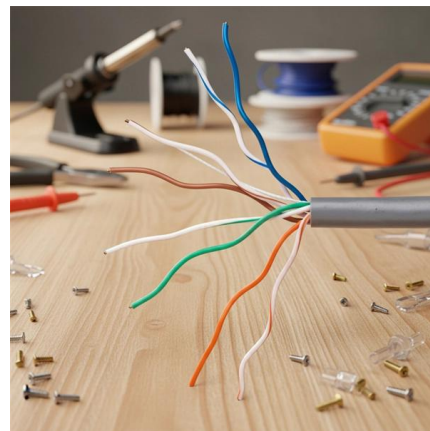


What is an access switch and how to select access switches?

What is an access switch? Learn the features and applications, and know how to select the right access switch for your network needs. Ruijie Networks' access switches here for you.

9 Configuring Switch Security

9 Configuring Switch Security The authentication, authorization, and accounting (AAA) mechanism verifies the identity of, grants access to, and tracks the actions of users managing a switch. The



Basic Cisco Switch Configuration Example in 10 Steps

Learn how to setup a cisco switch from scratch. Basic Cisco switch configuration example step-by-step





Contact Us

For datasheets, pricing, or custom high-speed optical interconnect solutions, please visit:

<https://www.syropy.com.pl>