

# **Ac bypass access to Layer 3 switch**





## Ac bypass access to Layer 3 switch

---



### Example for Configuring Layer 3 Direct Forwarding in Bypass Mode

Wireless Access Controller (AC and Fit AP)  
V200R024C10 CLI-based Configuration Guide  
Example for Configuring Layer 3 Direct Forwarding in Bypass Mode (Web) Service Requirements



### Example for Configuring Layer 3 Direct Forwarding in Bypass Mode

Wireless Access Controller (AC and Fit AP)  
V200R023C10 Configuration Guide Example for Configuring Layer 3 Direct Forwarding in Bypass Mode (CLI) Service Requirements Enterprise

### Example for Configuring Layer 3 Tunnel Forwarding in Bypass Mode

The AC functions as a DHCP server to assign IP addresses to APs. The aggregation switch (SwitchB) functions as a DHCP server to assign IP addresses to STAs. Service data forwarding mode: tunnel



### How can I apply an ACL to interface on a Layer 3 switch?

By default, interfaces on Cisco L3 switches are layer 2, so you would have to apply the ACL to the SVI (VLAN interface). In order to make the interface



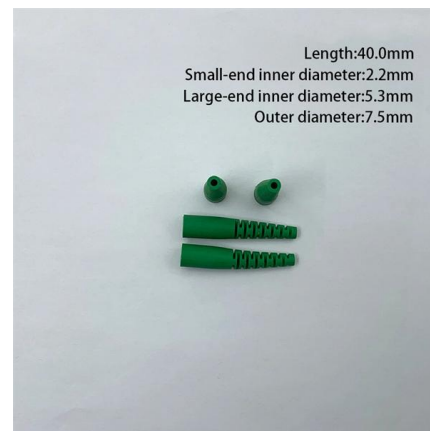
### Example for Configuring Layer 2 Direct Forwarding in Bypass Mode (CLI)

The AC functions as a DHCP server to assign IP addresses to APs. The aggregation switch (SwitchB) functions as a DHCP server to assign IP addresses to STAs. Service data



### Example for Configuring Layer 3 Tunnel Forwarding in Bypass Mode

Example for Configuring Layer 3 Tunnel Forwarding in Bypass Mode Service Requirements Enterprise users can access the network through WLANs, which is the basic



### Example for Configuring Layer 3 Direct Forwarding in Bypass Mode

Wireless Access Controller (AC and Fit AP) V200R024C10 Configuration Guide Example for Configuring Layer 3 Direct Forwarding in Bypass Mode (CLI) Service Requirements Enterprise



## How to Bypass a 3-Wire AC Pressure Switch

Learn how to bypass a 3-wire AC pressure switch safely for diagnostic testing. Understand the wiring, risks, and essential steps to protect



## Example for Configuring Layer 3 Direct Forwarding in Bypass Mode

In direct forwarding mode, you are advised to configure multicast packet suppression on switch interfaces connected to APs. In tunnel forwarding mode, you are advised to configure

## Example for Configuring Layer 3 Direct Forwarding in Bypass Mode

Wireless Access Controller (AC and Fit AP)  
V200R020C10 CLI-based Configuration Guide  
Example for Configuring Layer 3 Direct Forwarding in Bypass Mode Service Requirements



## Example for Configuring Layer 3 Direct Forwarding in Bypass Mode

Wireless Access Controller (AC and Fit AP)  
V200R022C00 CLI-based Configuration Guide  
Example for Configuring Layer 3 Direct Forwarding in Bypass Mode Service Requirements



## Notes on AC Layer 3 Bypass Networking Configuration Huawei

When we configure the Layer 3 bypass mode, we must ensure that the AP can ping the AC after obtaining the address, so that the AP can establish a tunnel with it after broadcasting.

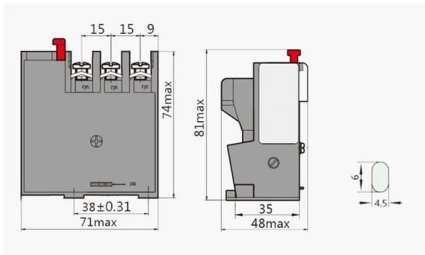


### Example for Configuring Layer 3 Tunnel Forwarding in Bypass Mode

In direct forwarding mode, you are advised to configure multicast packet suppression on switch interfaces connected to APs tunnel forwarding mode, you are advised to configure multicast

### Example for Configuring Layer 2 Tunnel Forwarding in Bypass Mode

The AC functions as a DHCP server to assign IP addresses to APs. The aggregation switch (SwitchB) functions as a DHCP server to assign IP addresses to STAs. Service data



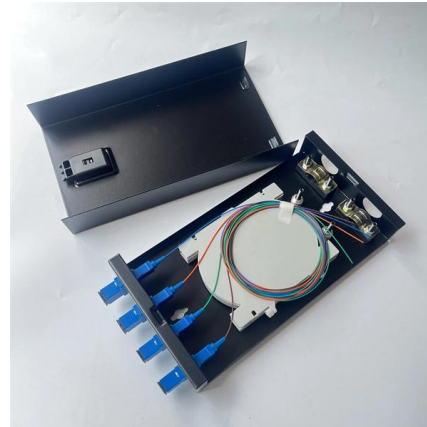
### Example for Configuring Layer 3 Direct Forwarding in Bypass Mode

Example for Configuring Layer 3 Direct Forwarding in Bypass Mode Service Requirements Enterprise users can access the network through WLANs, which is the basic requirement of mobile office.



### Example for Configuring Layer 3 Direct Forwarding in Bypass Mode

Wireless Access Controller (AC and Fit AP)  
V200R023C10 Configuration Guide Example for Configuring Layer 3 Direct Forwarding in Bypass Mode (Web) Service Requirements Enterprise



### Example for Configuring Layer 2 Tunnel Forwarding in Bypass Mode

The AC functions as a DHCP server to assign IP addresses to APs. The aggregation switch (SwitchB) functions as a DHCP server to assign IP addresses to STAs. Service data forwarding mode: tunnel



### Example for Configuring Layer 2 Tunnel Forwarding in Bypass Mode

Example for Configuring Layer 2 Tunnel Forwarding in Bypass Mode Service Requirements Enterprise users can access the network through WLANs, which is the basic



### Example for Configuring Layer 3 Direct Forwarding in Bypass Mode

Configure AC system parameters, including the country code and source interface used by the AC to communicate with the APs. Configure the AP authentication mode and import the APs offline to allow



### Example for Configuring Layer 2 Tunnel



### Forwarding in Bypass Mode

The AC functions as a DHCP server to assign IP addresses to APs. The aggregation switch (SwitchB) functions as a DHCP server to assign IP addresses to STAs. Service data forwarding mode: tunnel



### Applying ACL on cisco L3 switches

I really would recommend the layer 2 solution for wifi, but if you wanted to use L3 then the ACL will need to deny to all internal networks and permit internet only.

### Traffic Filtering on Cisco Layer3 Switches using ACL and VACL

Configuration example of Cisco VLAN Access Control List (VACL) on Layer3 switch for traffic filtering within the same VLAN.



### Example for Configuring Layer 3 Tunnel Forwarding in Bypass Mode

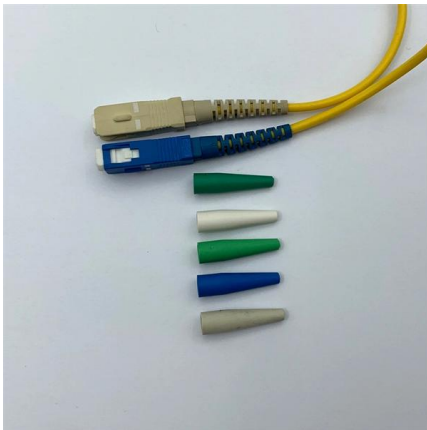
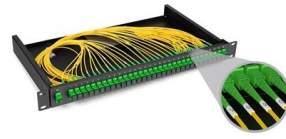
Configure AC system parameters, including the country code and source interface used by the AC to communicate with the APs. Configure the AP authentication mode and import the APs

### Example for Configuring Layer 2 Direct



## Forwarding in Bypass Mode

Wireless Access Controller (AC and Fit AP)  
V200R010C00 Web-based Configuration Guide  
Example for Configuring Layer 2 Direct  
Forwarding in Bypass Mode Service  
Requirements



## Example for Configuring Layer 3 Direct Forwarding in Bypass Mode

Wireless Access Controller (AC and Fit AP)  
V200R020C00 CLI-based Configuration Guide  
Example for Configuring Layer 3 Direct  
Forwarding in Bypass Mode Service  
Requirements

## Using Layer 3 at the access layer

To be frank, if you have a 2811 as the core device and a couple of switches to hook up to it, you don't really need any kind of hierarchy. There is absolutely no need for distribution layer in your setup.



## WLAN Layer 3 Bypass Networking Is EASY With This SECRET (Part 1)

In this experiment, we will dive into how Layer 3 Bypass opens up new possibilities for WLAN network design, offering more control, better efficiency, and greater network adaptability.

## Example for Configuring Layer 3 Tunnel



## Forwarding in Bypass Mode

In direct forwarding mode, you are advised to configure multicast packet suppression on switch interfaces connected to APs. In tunnel forwarding mode, you are advised to configure multicast



## ACL on L3 Switch

BTW, if you had a router, rather than a switch, you could use NBAR to truly restrict access to HTTP (i.e. not just port 80) and/or you might use reflective ACLs to restrict host A to just the port

## Contact Us

---

For datasheets, pricing, or custom high-speed optical interconnect solutions, please visit:  
<https://www.syropy.com.pl>