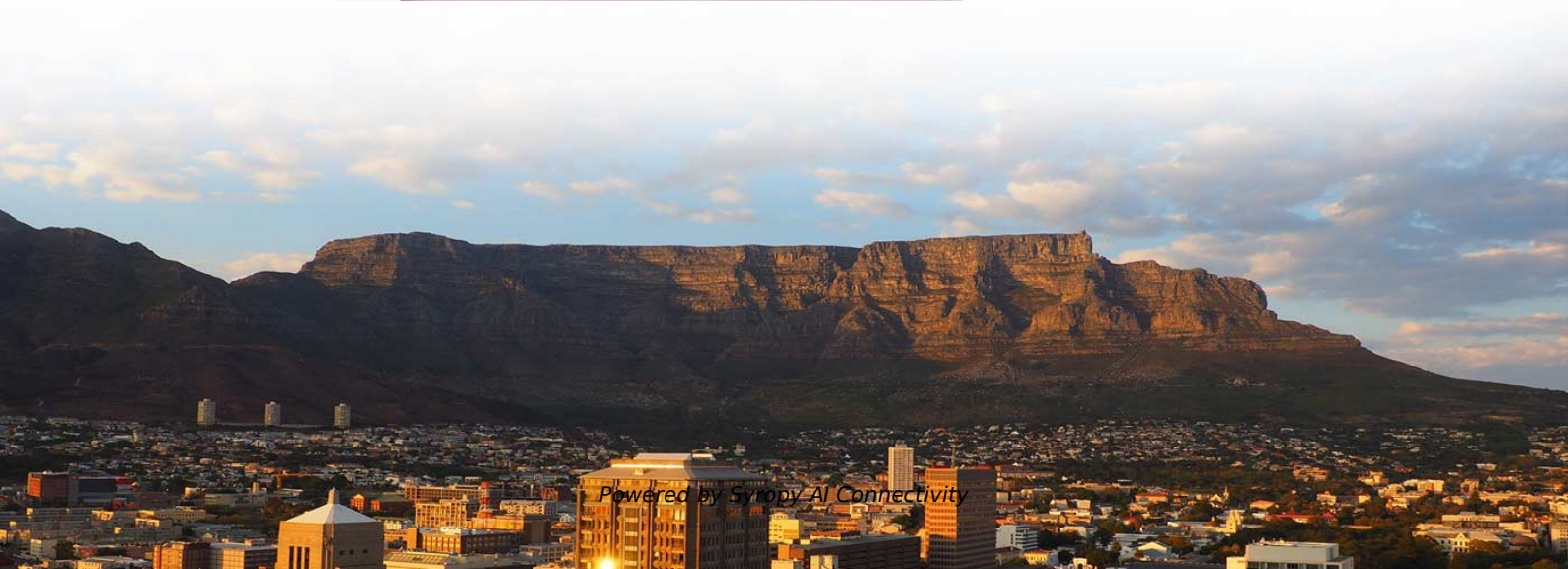


AI infrastructure optical module PCB





AI infrastructure optical module PCB



Lightmatter Expands Photonic Interconnect Roadmap with Passage(TM)

Near-Packaged Optics (NPO): The L20 module integrates directly next to the ASIC on the PCB or a mezzanine board, delivering exceptional configuration flexibility.

Optical Modules and PCBs: Driving High-Speed Data Transmission in

Our leadership in AI-enabled communication networks makes us the perfect partner for high-quality, value-driven optical modules and PCBs. In this blog, we'll explore the background,



AI servers are becoming increasingly integrated systems. GPUs,

AI servers are becoming increasingly integrated systems. GPUs, CPUs, NICs, switch ASICs, optical modules, power modules, liquid cooling systems, and high-speed PCBs must be designed as part of

Optical Networking: The Next Mega Trend in AI Infrastructure

Networking unlocks computing capability for single AI chips, connecting multiple chips (working together), enabling seamless data exchange and low latency, and driving AI to the next level.



8-Port PLC Fiber Splitter Box
12-Port SC Fiber Splitter Box

Size: 235*215*75mm
 Material: ABS, IP65,



Ordering information

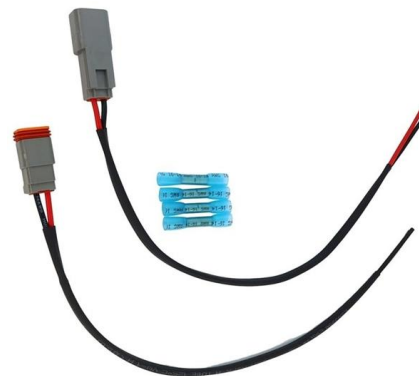
NO.	1	2	3	4	5	6
Model	SP2402	SP2402	SP2404	SP2404	SP2402	SP2404
Product name	Patch Panel	Patch Panel	Patch Panel	Patch Panel	Patch Panel	Patch Panel
Illustration						
HU	1	2	4	1	2	4
Maximum number of lanes	144	288	576	144	288	576
Product size (including modules and cables)	482.0*102*74 mm	482.0*102*74 mm	482.0*102*77 mm	482.0*102*74 mm	482.0*102*74 mm	482.0*102*77 mm
Standard color code	RAL9005	RAL9005	RAL9005	RAL9005	RAL9005	RAL9005
Inventory	2	2	2	2	2	2

224G SerDes vs 112G: How It Enables 800G and 1.6T Optical Modules

Why 224G Is Critical for 800G and 1.6T Optical Modules 224G SerDes is becoming a core technology for 800G optical modules, 1.6T transceivers, and OSFP224 form factors. Compared with

Credo Technology Group Holding Ltd

Highly Integrated, High-Performance and Power-Efficient Devices Bring Flexible Deployment Options to Accelerate AI Infrastructure Build-Out



POET Technologies and Lumilens Advance Wafer-Level Photonic

About Lumilens Lumilens is building the connectivity platform for AI infrastructure, delivering scale-up and scale-out optical interconnect solutions designed for the performance, power, and



Optical Transceiver Market Size, Share, Trends

The global optical transceiver market size is projected to grow from \$17.15 billion in 2026 to \$46.12 billion by 2034, exhibiting a CAGR of 17.00%



High-Speed PCB Solutions for 400G and 800G Optical Modules

The rapid expansion of AI computing, hyperscale data centers, cloud networking, and 5G infrastructure is accelerating the deployment of 400G and 800G optical modules worldwide. As

AI infrastructure accelerates the shift to scalable optical systems

Emerging themes and trends OFC 2026 showed that AI scale-up is reshaping optical roadmaps. Optical interconnect is increasingly central not just to networking, but to AI system



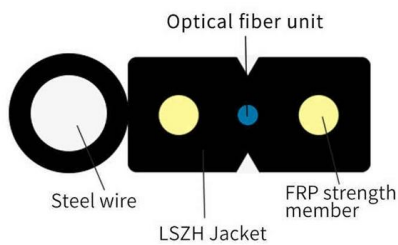
Präsentation

With our optical PCB technology, you're not just upgrading links -- you're unlocking a new class of high-density, high-efficiency compute infrastructure. Join us in building the optical interconnect backbone



AI Server PCB: The Right Manufacturer for Data

Modern AI infrastructure requires PCB integration with CPO (Co-Packaged Optics) for optical modules integrated with switch chips, liquid cooling

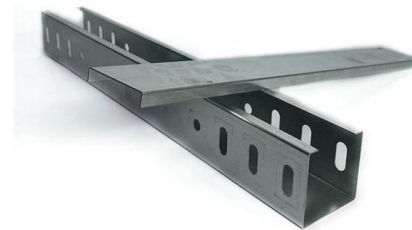


Co-Packaged Optics Race: Strategic Approaches from NVIDIA and

IDTechEx Research Article: Co-packaged optics (CPO) is gaining significant attention as the next architecture for next-generation switching. The shift toward co-packaged optics is also

Optical Module Stocks Surge Over 6% as 1.6T Era Begins

Driven by accelerating AI infrastructure demand, key optical module stocks like InnoLight and Eoptolink surged after a Huatai Securities report confirmed 1.6T modules have entered





Tower Semiconductor Teams with NVIDIA to Advance

Home » Press Releases Tower Semiconductor Teams with NVIDIA to Advance AI Infrastructure with 1.6T Data Center Optical Modules Tower's



The Opto-Electronic Convergence Revolution Brought by Nvidia's

NVIDIA Quantum is a high-speed network platform based on InfiniBand, while Quantum-X refers to a design philosophy that optimizes the entire AI data center as a single computing



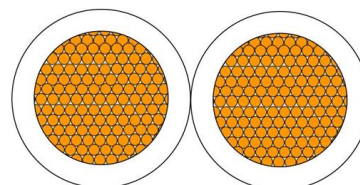
Co-Packaged Optics (CPO) Market Trends 2026: AI Data Center Optical

Explore the future of co-packaged optics (CPO) in AI data centers. Learn how silicon photonics, optical I/O, and high-speed optical interconnect technologies are shaping next-generation



?GF Overseas Electronics & Communications? ? March 16 GTC

Jukan (@jukan05). 89 likes 5 replies. ?GF Overseas Electronics & Communications? ? March 16 GTC 2026 Keynote + Silicon Valley Channel Check Call Summary ? Key



Optical Products , AI Clusters , AI Infrastructure



Learn about optical solutions that are open, scalable and power-efficient for AI infrastructure.



Charting the Path Toward 1.6T and 3.2T Optical Module

The path to 1.6T and 3.2T Transitioning from 800G to 1.6T optical modules as AI workloads in data centers escalate will effectively double the bandwidth capacity



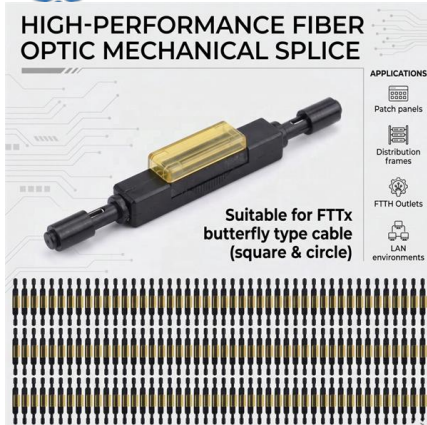
Scaling AI Factories with Co-Packaged Optics for Better

In this blog, we'll explore how NVIDIA networking innovations have enabled co-packaged optics to deliver massive power efficiency and resiliency

Optical-First Data Centers: CPO vs NPO vs XPO in 2026 · KAD

CPO, NPO, and XPO redefine data center connectivity in 2026, shifting from copper to optical-first architectures for AI-scale infrastructure.



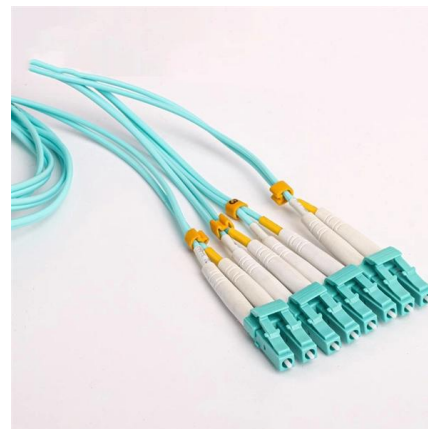


The Application of Optical Modules in AI Technology

Optical modules reduce power consumption and improve system stability, allowing AI systems to run longer with fewer interruptions. These

XPO: Redefining Pluggable Optics for AI Networking

By rethinking optical module architecture from the ground up, XPO provides a scalable foundation for next-generation AI networking infrastructure, enabling data center operators to build higher-capacity,



Contact Us

For datasheets, pricing, or custom high-speed optical interconnect solutions, please visit:
<https://www.syropy.com.pl>