

AI Server Hardware Cost Analysis





Overview

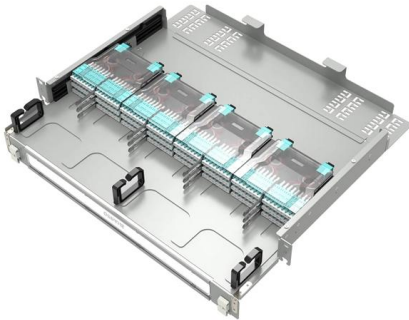
AI infrastructure budgeting requires precise assessment of GPU performance, memory hierarchy, storage throughput, and network latency. The hidden costs are advanced cooling systems, power upgrades, specialized networking, and operational overhead, which can double or triple your initial budget projections. How much does it cost to train a model?

What about inference at scale?

The truth is, there's no simple answer—just like building a house, the final cost depends on the. Demand for accelerated compute has exploded in the three years since the launch of ChatGPT. Nvidia's annual revenue has soared nearly 8-fold, from \$27 billion in 2022 to \$216 billion in 2025, with consensus estimates up another 62% to \$350 billion in 2026. An AI Server Cost varies depending on server configuration, interconnect type, and workload requirements. As artificial intelligence adoption expands, businesses must balance high-performance computing needs with scalable infrastructure.



AI Server Hardware Cost Analysis



The Real Cost of AI Infrastructure in 2026: GPUs, Power, Cooling

AI infrastructure in 2026 is no longer defined by GPU price alone. Organizations investing in high-performance accelerators often focus on acquisition cost -- but the real economics of AI deployment

AI Server Data Center Cost Breakdown: 2025

Explore the real costs of deploying AI-ready infrastructure, from GPU servers to advanced cooling and power delivery. Learn how to plan and optimize



Re-Architecting the AI Server: The Hidden Water Cost of

When hot water leaves the server racks, it is piped into massive cooling towers outside the facility, where the heat is dissipated through

AI in finance: Driving automation and business value

Discover how real-world examples reveal the ways finance functions apply AI to deliver faster insights, stronger controls, and measurable results for



OneUptime , The Open-Source Observability Platform

OneUptime is an open-source complete observability platform. Monitor websites, APIs, and servers. Get alerts, manage incidents, and keep customers informed



Mac Mini for AI: Apple Silicon for Local LLMs (2026)

Can the Mac mini replace a GPU for local AI? Compare M4 and M4 Pro configs, benchmark token speeds, and see when unified memory wins.



AI Server Data Center Cost Breakdown: 2025

AI servers, such as the HPE XD685 and Dell XE9680, equipped with eight NVIDIA H100 or H200 GPUs, consume over 7 kW per node, surpassing the





AI Infrastructure Costs: A Practical Guide

A complete guide to AI infrastructure costs. We break down hardware, cloud, and data expenses, plus how to estimate, manage, and reduce them. Master your



AI Capex 2026: The \$690B Infrastructure Sprint

2026 AI capex plans of Microsoft, Amazon, and Alphabet as spending hits \$700B. Will AI revenues justify this record infrastructure?



Why AI Servers Are Getting More Expensive

For enterprises planning new AI deployments, this introduces costs that are frequently absent from initial hardware budgets. Power delivery upgrades (new PDUs, breakers, transformers, and busways) are



Length:52.0mm
Small-end inner diameter:2.0mm
Large-end inner diameter:4.8mm
Outer diameter:6.5mm

Hardware Archives , TechRepublic

Stay current with the components, peripherals and physical parts that constitute your IT department.



The State Of AI Infrastructure: Demand, Costs, And Custom Silicon

Spending On AI Infrastructure Has Exploded
Demand for accelerated compute has exploded in the three years since the launch of ChatGPT. Nvidia's annual revenue has soared nearly



AI Hardware Index

Track AI hardware prices across 24+ vendors. Daily updated pricing for GPU servers, workstations, and accelerators from \$109 to \$500k+.

Explainer: The RAMpocalypse is making memory,

And many of the same production facilities that make memory for these AI servers also make memory for our RAM, SSDs, and graphics cards,



Welcome to Channel Dive , Channel Dive

Welcome to Channel Dive. We're Informa TechTarget's new publication, focused on delivering daily news and analysis for executives at North



Ars Technica

News and reviews, covering IT, AI, science, space, health, gaming, cybersecurity, tech policy, computers, mobile devices, and operating systems.



Nvidia Blackwell, Google TPUs, AWS Trainium: Comparing top AI

Nvidia is king in AI chips, but custom ASICs are gaining ground with Google, Amazon, Meta, Microsoft and OpenAI now making their own.

The AI for Problem Solvers , Claude by Anthropic

Claude is Anthropic's AI, built for problem solvers. Tackle complex challenges, analyze data, write code, and think through your hardest work.



Nvidia exec says AI is more expensive than actual workers -- yet

Artificial Intelligence Nvidia exec says AI is more expensive than actual workers -- yet some companies don't see the extra costs as a negative News By Bruno Ferreira published April 29,



Understanding the cost to setup an AI data center

AI data center costs vary based on hardware, power, and location. Learn key expenses, cost-saving strategies, and investment insights for AI infrastructure.

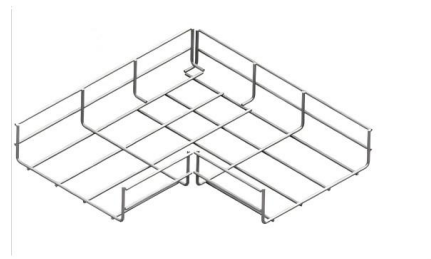


Analytics India Magazine , AI News, Research & Analysis

India's Leading AI & Data Science Media Platform. Get the latest news, research, and analysis on artificial intelligence, machine learning, and data science.

Rethinking AI TCO: Why Cost per Token Is the Only Metric That Matters

Cost per token is the one TCO metric that directly accounts for hardware performance, software optimization, ecosystem support and real-world utilization -- and NVIDIA delivers the



AI Shifts IT Budgets to Growth Investments , BCG

As artificial intelligence evolves, IT budgets are keeping pace, with companies ratcheting up investments that drive growth--and squeezing mature



AI Server Price Guide , GPU Hosting Costs

Understand the factors influencing AI server price. Compare configurations and find the most cost-effective AI dedicated server for your

Focus creates quality products

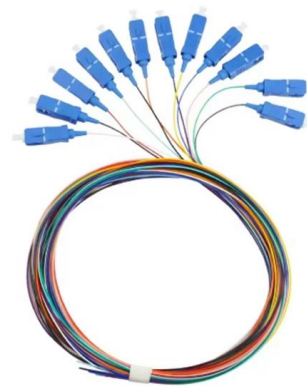


OpenAI Server Costs: The Economics of AI Infrastructure

The article examines how companies like OpenAI navigate these costs, the impact on pricing structures for AI services, and the broader implications for the scalability and accessibility of cutting-edge AI

AI Infrastructure TCO Calculator , GPU Cost Analysis , SLYD

Calculate the complete total cost of ownership for your AI infrastructure deployment. Compare on-premises vs. cloud with 3-7 year financial projections and break-even analysis.



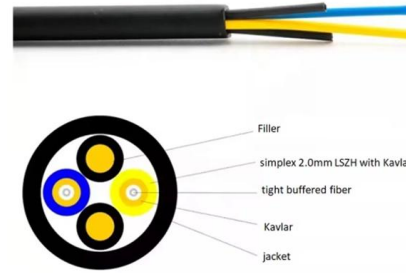
SemiAnalysis - Bridging the gap between the world's most important

Bridging the gap between the world's most important industry, semiconductors, and business.



AI's Energy Demand: Challenges and Solutions for a

From powering massive data centers to generating e-waste, AI's environmental footprint is growing fast. In this Q& A, a computer scientist explains



Contact Us

For datasheets, pricing, or custom high-speed optical interconnect solutions, please visit:
<https://www.syropy.com.pl>