

A switch with only one 10 Gigabit optical port





A switch with only one 10 Gigabit optical port

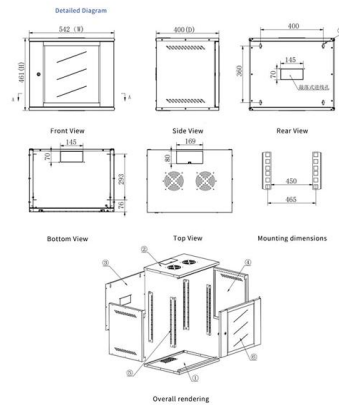


Is SFP Compatible With SFP+? Can 10G SFP+ Run at 1G SFP

Edited in 2021: 1/10G dual-rate SFP+ transceivers are designed for use in 1-Gigabit and 10-Gigabit Ethernet links over single-mode fiber (SMF) or multi-mode fiber (MMF).

Understanding SFP Port: A Guide to Gigabit Ethernet

A: An SFP module is a small form factor pluggable transceiver inserted into an SFP port. It converts electrical signals from the device into optical signals



SWP Series brochure

SWP series network switches are a solution the pro audio market has been waiting for, offering an ideal a balance of IT and pro audio know-how that only Yamaha could provide.

MokerLink Store

MokerLink 8 port 10G ethernet switch upgrading networks by providing a more reliable, stable, seamless network and easily multiplying the



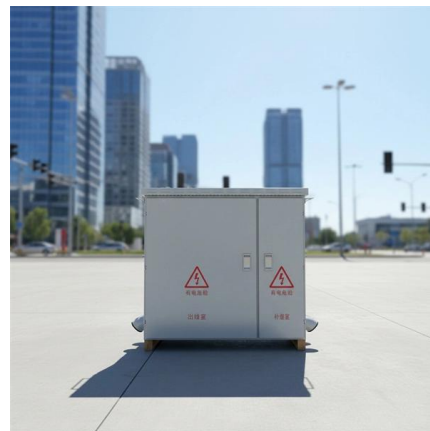
Press corner , European Commission

Find highlights, press releases, and speeches from the European Commission in one place.



1/10/25G Gigabit Ethernet

It means the optical port can support 1-, 10- or 25 Gbps optical modules. The "gotcha" to all of this will be the supported optical "models" or SKU. Usually, SR (short reach) is first supported



An introduction to SFP ports on a Gigabit switch

An introduction to SFP ports on a Gigabit switch
SFP ports enable Gigabit switches to connect to a variety of fiber and Ethernet cables and extend switching functionality throughout the





SFP-1G-SX Explained: The Essential Guide to 1G

This guide dives deep into the SFP-1G-SX transceiver, the industry-standard solution for 1 Gigabit short-range fiber optic connections. Learn about its

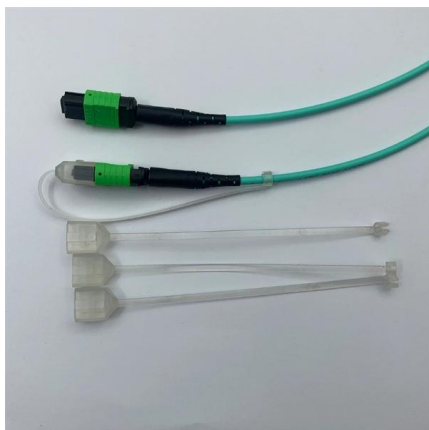


Is SFP Compatible With SFP+? Can 10G SFP+ Run at 1G SFP Gigabit Switch

Everything you should know about the issue of SFP to SFP+ compatibility. Will 1G SFP optics work with 10Gb SFP+ ports on a 10Gb switch? Or will 10Gb SFP+ run at 1Gb to link gigabit

Can a 10G SFP work in a 1Gb port?

No, a 10G SFP (Small Form-factor Pluggable) module is designed to operate at 10 Gigabits per second (Gbps) and is not compatible with a 1 Gigabit per second (Gb) port.



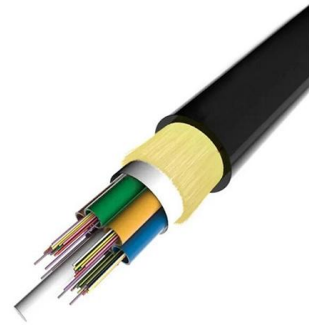
Unlocking the Power of 10 GbE: The Ultimate Guide to

Explore fiberall about 10 GbE switches! Unlock advanced networking with our ultimate guide to 10 Gb network switch technology.



What is a 10G SFP+ Switch and How to Use It?

A 10G SFP+ switch is a network switch equipped with SFP+ ports that support 10Gbps speeds. Devices (such as servers, routers and other



10 Gigabit SFP Switches , 10 Gig SFP Switch , 10Gbs

VERSITRON's 10 Gig SFP Switches feature 4x 1G/10G SFP/SFP+ ports, providing high-speed fiber connectivity ideal for large enterprises and data centers. These

Cisco 10GbE Optics Guide

Because of this, many of the small SFP+ based 10GbE switches use 1G/10G ports, giving an added degree of flexibility. SFP+ optics have become, by far, the most



Can a 10GbE Switch SFP+ Port be Connected to a

When an SFP+ optical module is used on the SFP+ port of a 10 Gigabit switch and an SFP optical module is used on the SFP port of a Gigabit switch, the SFP+ port



SFP vs SFP+: The OEM Guide to 1G and 10G Optical

The answer depends on which direction you are going: Can I plug a 1G SFP into a 10G SFP+ port? Generally, Yes. Most enterprise switches (Cisco,



What Is an SFP Port on a Gigabit Switch?

An SFP port (Small Form-Factor Pluggable port) on a Gigabit switch is a dedicated slot designed to support SFP modules, enabling flexible data

What is a gigabit switch?

Types of gigabit switches In addition to the differentiators of speed rating and number of ports, there are several other gigabit switch types to consider. Fixed



Understanding 10G SFP Ports on Cisco Switches: A

Discover the power of 10G SFP ports on Cisco switches. This guide explains 10 gigabits per second capabilities, uses, and benefits for network





10-Gigabit Ethernet

Your All-in-One Learning Portal: GeeksforGeeks is a comprehensive educational platform that empowers learners across domains-spanning computer



Understanding SFP to SFP+ Compatibility: A

Can 1G SFP optics work with 10Gb SFP+ ports on a 10Gb switch, or vice versa? This comprehensive guide reveals the intricacies of SFP and SFP+

10 gig switch vs 2.5 gig vs 1 gig: Which do you need?

There are so many choices among network switches these days. Especially in the home lab or consumer market there are now great choices for 10



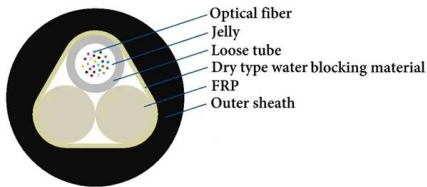
Gigabit Switch: What It Is, How It Works & Which to

Learn what a Gigabit Ethernet switch is, how it works, key features, and how to choose or connect one. Compare managed vs unmanaged and SFP



24-Port 1U/Desktop Gigabit Ethernet Unmanaged

1U Rack-Mount 24-Port Unmanaged Gigabit Ethernet Switch with 2 SFP Ports The energy-efficient NG24 network switch connects up to 24 devices, such as

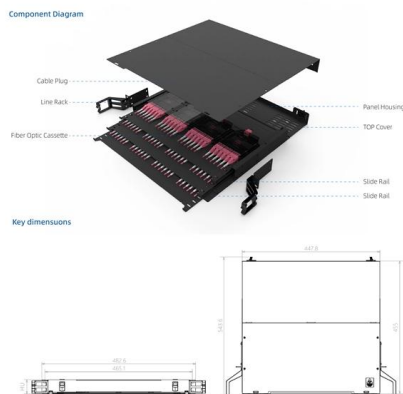
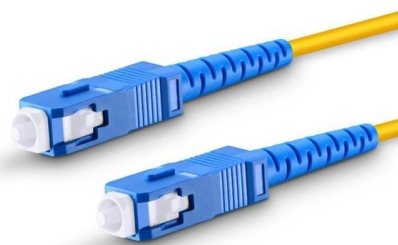


What is a Gigabit Ethernet Switch? Benefits,

EtherWAN's full gigabit Ethernet switches provide high port density, and are an economical solution for applications with high bandwidth demands.

Identifying a 10G port

Catalyst switches are well known to have very shallow per-port-buffer and the large amount of Total Output Drops is evidence that QoS will need to be implemented or adjusted.



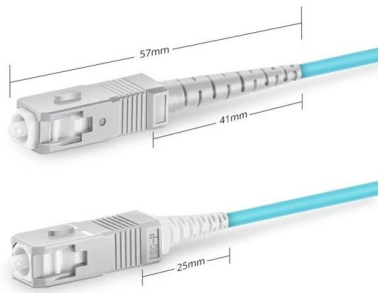
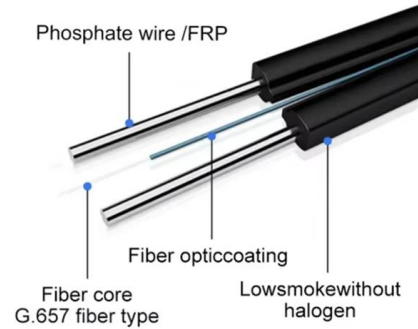
TP1910 10GB SFP+ Switch (8 Port

8 High-Speed SFP+ ports enabling 10GB connection speeds for all your optical fiber devices 10 Gigabit Small Form-factor Pluggable switch with 160GB backplane



Cisco 10G Routed PON ONT Data Sheet

This single-box desktop solution comes with built-in XGS-PON optics, MAC, an Ethernet switch, and multiple ports, including one RJ-45 port at 10 Gbps, four RJ-45 ports at 1 Gbps, and a



Simplex SC UPC

Gigabit Ethernet

Gigabit Ethernet was the next iteration, increasing the speed to 1000 Mbit/s. The initial standard for Gigabit Ethernet was produced by the IEEE in June 1998 as

Contact Us

For datasheets, pricing, or custom high-speed optical interconnect solutions, please visit:
<https://www.syropy.com.pl>