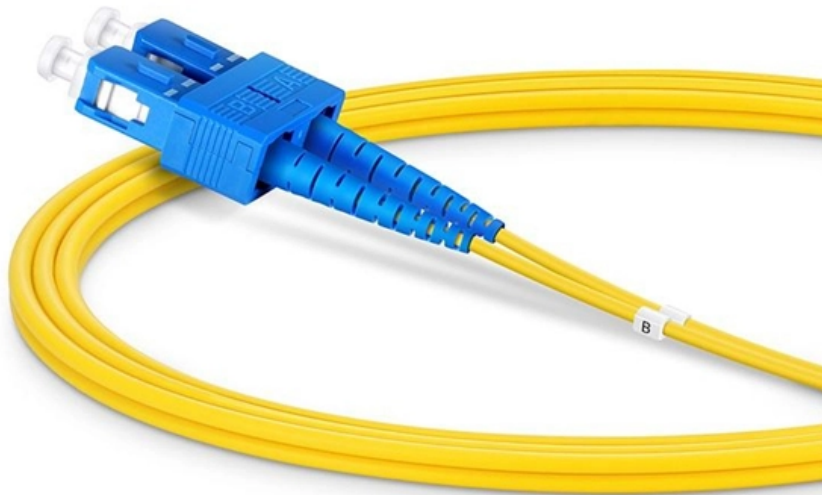


A switch can aggregate multiple broadband connections





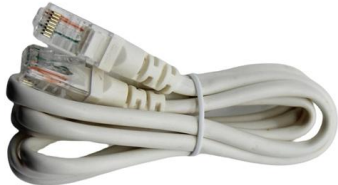
Overview

An aggregate switch is a high-capacity network switch that consolidates connections from multiple access switches, acting as a central point for managing network traffic and providing enhanced bandwidth capabilities. Switch aggregation, also known as link aggregation or trunking, is a method used in computer networking to combine (aggregate) multiple network connections in parallel. This arrangement increases throughput beyond what a single relationship could sustain, offers redundancy in case one of the links.



A switch can aggregate multiple broadband connections

Link aggregation



Link aggregation Link aggregation between a switch and a server In computer networking, link aggregation is the combining (aggregating) of multiple network

Why You Need a Fiber Aggregation Switch and How it

Fiber aggregation is the act of combining many fiber optic cables into one high-capacity network connection. It involves using switches for fiber



How Switch Aggregation Works -- In One Simple Flow

Switch aggregation is transforming how networks handle data traffic. By combining multiple switches into a cohesive system, organizations can

What Is an Aggregation Switch and How to Choose?

An aggregation switch is a network device that consolidates traffic from multiple access switches, wireless access points, or other edge devices and



Combine Multiple Internet Connections to Boost Internet

Method 1: Set Windows Automatic Metric to Combine Connections Note: with this method you can combine the following types of connections:



4 Ways to Combine Two Internet Connections

4. Multi-WAN VPN Routers: Multi-WAN VPN routers are specialized networking devices that allow users to connect to multiple Internet connections and create a single, secure virtual private network (VPN).



Dual-WAN vs. Link Aggregation: The 2x Bonus , Dong

Link Aggregation, also known as bonding, occurs when multiple router network ports aggregate into a single connection with combined bandwidth.

Best way to aggregate multiple internet



Hello everyone, I have 5 internet lines in my company, and currently I am aggregating them using my firewall using ECMP technique. the 5 internet lines



Multi-Gig Switch: Everything You Need to Know (Guide)

Whether you're gaming, streaming 4K content, backing up huge files, or simply future-proofing your setup, a multi-gig switch can make your network



What Is an Aggregation Switch and How to Choose?

An aggregation switch is a network device that consolidates traffic from multiple access switches, wireless access points, or other edge devices and forwards it to



4 Ways to Combine Two Internet Connections

Combing Two Internet Connections Get a load-balancing router to combine your Internet connections into one broadcast. You can connect multiple





How to merge multiple Internet connections into one?

My cellphone can share its connection wirelessly to my PC, but I also have a wired Internet connection. So I have multiple Internet connections to access the Internet. How can I merge 2 or more

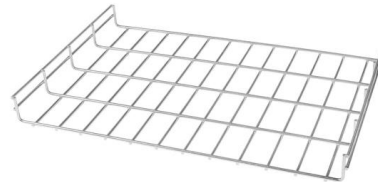


Managing multiple internet connections to a single switch

What we want to achieve is for the switch to automatically send data down connection A if connection B is not performing well, and vice-versa. Equally if both connections are performing for

Ethernet Switch vs. Hub vs. Splitter: What's the Difference?

You can run two cables from the router, plug them both into a splitter, plug the splitter into the wall, and reverse that on the other side with another



What is an Aggregate Switch?

An aggregate switch is a high-capacity network switch that consolidates connections from multiple access switches, acting as a central point for managing network traffic and providing

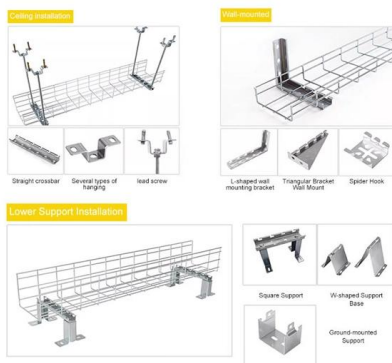


What is "link aggregation" and how does it benefit your

For our setup we used, the Trendnet TEG-082WS switch to aggregate multiple ports into a single logical connection between our wired devices.



INSTALLATION METHOD

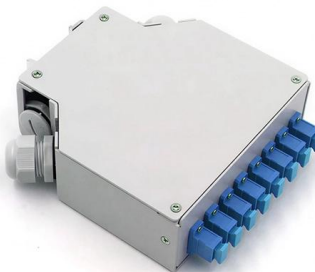


Link Aggregation (LAG) Explained: When & Why to Use It

Link aggregation is a networking technique that groups two or more parallel Ethernet connections between two devices into a single logical link.

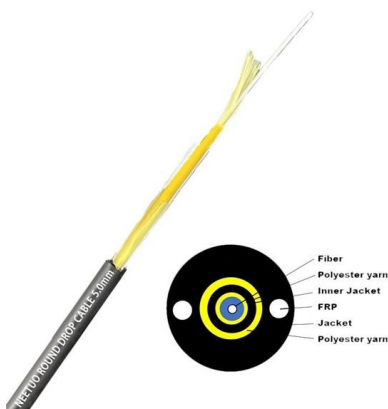
4 Ways to Combine Two Internet Connections

While combining your internet connections doesn't double your download speeds, it does increase your bandwidth (e.g., the amount of space



What is WAN Aggregation/WAN Aggregator? , Fortinet

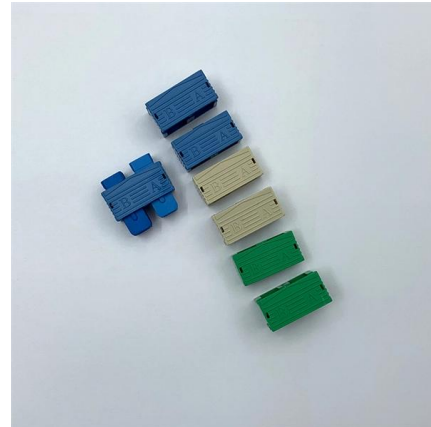
By combining multiple network connections in parallel to leveraging under-used links, spreading traffic evenly across those connections, and increasing bandwidth





What Are Aggregation Service Routers (ASR)?

Aggregation devices can enable an SD-WAN platform to combine multiple WAN connections, using various network transports, and network services such as



What is Link Aggregation (LAG) in Networking?

Link aggregation is a technique used in networking to bundle multiple physical ports on a network device to operate as a single link. The aggregated link acts as a

Link aggregation

Link aggregation offers an inexpensive way to set up a high-capacity backbone network that transfers multiple times more data than any single port or device can



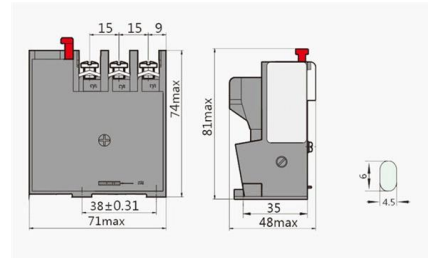
Understanding Switch Aggregation: A Comprehensive

Defining switch aggregation and its role in network architecture Switch aggregation, also known as link aggregation or trunking, is a method used



Understanding Switch Aggregation: A Comprehensive Guide

Switch aggregation, also known as link aggregation or trunking, is a method used in computer networking to combine (aggregate) multiple network connections in parallel.



Link Aggregation and Load Balancing

You may want to set up and configure a bonded link between your Meraki MS series switch and a Cisco switch. This is often referred to as link aggregation, link bonding or EtherChannel.

Ethernet Aggregation Router/Switch? (to Combine 2 separate ethernet

I know in a long gone area there were devices that could aggregate multiple DSL connections but those aren't relevant here. If you want to have two ISP connections keep them



Contact Us

For datasheets, pricing, or custom high-speed optical interconnect solutions, please visit:

<https://www.syropy.com.pl>