

A complete list of carbon steel explosion-proof distribution box models





A complete list of carbon steel explosion-proof distribution box models



Explosion Proof Distribution Box , ATEX Transformer Supplier

We supply certified explosion proof distribution box & ATEX Transformer -Appleton, ATKON, CZ, CEAG, brands for safe and reliable industrial use.

Ex Junction Boxes and ATEX Enclosures - ATEX Delvalle

The Ex enclosures are available in painted mild steel, stainless steel (AISI 304L and AISI 316L), aluminium and polyester and they are widely certified to meet the



Explosion-Proof Distribution Boxes & Panels Manufacturer

The explosion-proof distribution box safely delivers power in hazardous zones (oil, gas, chemical plants) with rugged, spark-resistant casing--ATEX/IECEX, IP66 certified for reliable operation in explosive

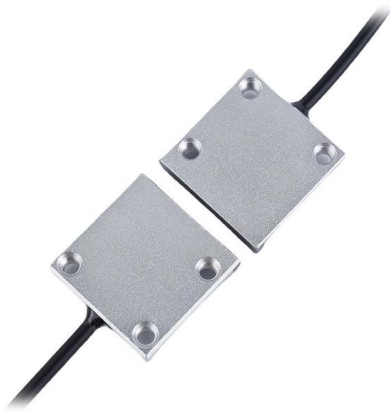
Explosion-Proof Corrosion-Resistant Distribution Box BXM (D)8030

BXM(D) 8030 Explosion-Proof Corrosion-Resistant Distribution Box, designed for hazard zones, ensures safe power control and prevents ignition risks.



5 Key Factors to Consider When Selecting Explosion Proof Distribution Boxes

Selecting explosion-proof distribution boxes protects the safety of your staff in any potentially hazardous workplace. HEXLON stands out as a trusted provider of explosion-proof



PXK (Ex px IIC) Series Explosion-proof Pressurized Distribution Cabinets

Pressurized Products PXK Series Explosion-proof Pressurized Distribution Cabinets ..K15 Explosion protection to -CENELEC -IEC Can be used in Zone 1 and Zone 2 Zone 21 and Zone 22 Explosion



Explosion-Proof Distribution Boxes & Panels Manufacturer

An explosion-proof distribution box is a rugged enclosure for hazardous areas, safely delivering power while preventing sparks or heat from igniting flammable surroundings.



Distribution box solutions for explosion-proof environments in

Explosion-proof distribution boxes represent where regulatory wisdom meets engineering excellence. What appears as simple protective enclosures are actually sophisticated safety systems honed

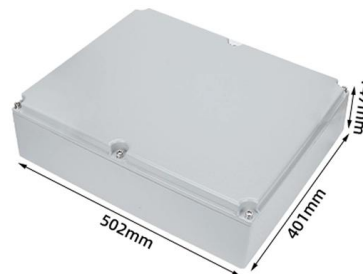


Model and Specification of Explosion-Proof Distribution Box

Explosion-proof lighting distribution boxes and cabinets come in a variety of models. They vary in terms of materials, including metal and flame-retardant plastic; installation methods, such as

Distribution Boxes and Empty Enclosures

Explosion-proof illumination distribution boxes
Explosion protection Gas explosion protection
Dust explosion protection Certificates For gas
explosion protection For dust explosion
protection



Explosion Proof Illumination Distribution Boxes (With

Flameproof and explosion proof, these power overhaul distribution boxes are suitable for use in hazardous areas. Specs: Ex mark: Ex de IIC T4 Gb DIP A21 TA,T4



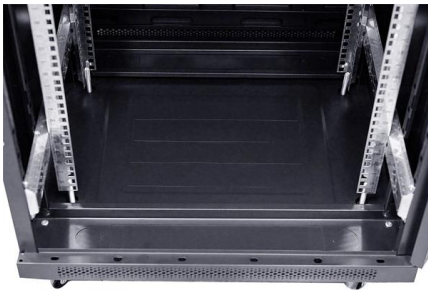
Distribution box solutions for explosion-proof environments in

That's where explosion-proof distribution boxes become the unsung heroes of industrial safety. These aren't just metal boxes; they're meticulously engineered fortresses designed to contain potential



BXM (D)51 Series Explosion proof Distribution Boxes

BXM (D)51 Explosion proof Distribution Boxes
Explosion protection to -CENELEC -IEC -NEC Can be used in Zone 1 and Zone 2 Zone 21 and Zone 22 Class I, Zone



HLDP03-Series Explosion-proof Distribution Boxes Exporter China

Home >> Products >> Explosion Proof Electric Apparatus >> HLDP03-Series Explosion-proof Distribution Boxes



Explosion proof Power Distribution Panel Box

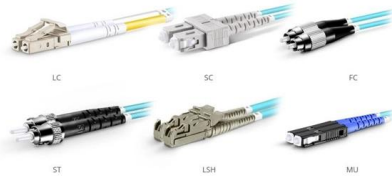
Steel pipe or cable wiring. Model BXK Materials Cast aluminium, Carbon steel, Stainless Steel, GRP Explosion Proof Mark Ex Db IIB T6 Gb, Ex tb IIC T80°C Db





Explosion Proof Distribution Box & Electrical Enclosures

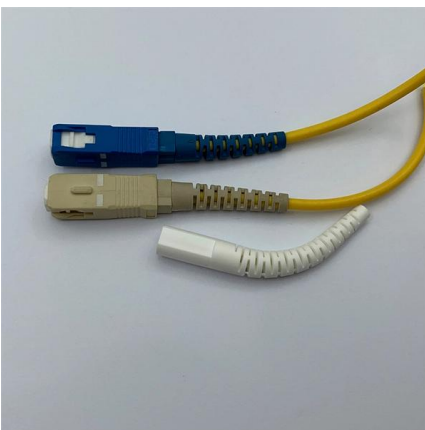
Durable Hexlon Explosion Proof Distribution Boxes and Electrical Enclosures, IECEx and ATEX certified for Zone 1 and Zone 2.



OM3 Fiber Patch Cable Family

Atex Certified Junction Boxes, Terminals, Sockets

These explosion proof junction boxes / terminal boxes, plugs, sockets & connectors are for use in explosive atmospheres in compliance with the ATEX 94/9/EC



Explosion Proof Power Distribution Boxes

Flameproof and explosion proof, these power overhaul distribution boxes are suitable for use in hazardous areas. Specs: Ex mark: Ex de IIC T4 Gb DIP A21 TA,T4



BM (D)X-Series Explosion Protected Distribution Box

This product is combined with flame-proof cavity and an increased safety cavity, the branch switch and the main switch are operated by the operating handle on the

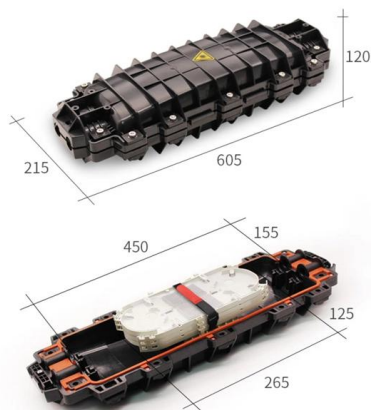


Stainless Steel Explosion-Proof Corrosion-Resistant Distribution Box

BX51 Stainless Steel Explosion-Proof Distribution Box is engineered to control power distribution safely in explosive-prone areas.

Explosion proof Lighting Power Distribution Box

Explosion proof Lighting Power Distribution Box, products shock-resistant and durable, energy-saving and environmentally friendly, models and styles are



Explosion Proof Box & Cabinet

Product features: The explosion-proof control cabinet (box) can install various instruments inside. Low-voltage electrical appliances, frequency converters, PLCs, soft starters, and computer systems can



Type pz:Zone2,Zone 21 and Zone 22 Explosion-proof type:pxIIC, pz IIC, pD IIC. Protection type:ventilationtype,compensation type. Structuretype:Box



Model and Specification of Explosion-Proof Distribution Box

Explosion-proof lighting distribution boxes and cabinets come in a variety of models. They vary in terms of materials, including metal and flame-retardant plastic

Explosion proof Lighting Distribution Box- Ouhui Lighting

Explosion proof Lighting Distribution Box, products shock-resistant and durable, energy-saving and environmentally friendly, models and styles are complete,



Ex junction and terminal boxes - Explosion-Proof , mlx-ex

From stainless steel enclosures for offshore use to GRP models for general industry, our products are built for reliability, safety, and long-term performance in hazardous areas. Browse our complete



Ex-Proof & Flameproof Enclosures & Junction Box , Supermec

All explosion-proof enclosures, lighting or power distribution boxes are manufactured using the latest technologies, both mechanical and electrical, using materials able to resist in most highly corrosive



Explosion-Proof Distribution Box , Product Center

Explosion-proof distribution boxes are designed to safely control and distribute electrical power in hazardous environments, preventing ignition risks.



Contact Us

For datasheets, pricing, or custom high-speed optical interconnect solutions, please visit:
<https://www.syropy.com.pl>