

8-Port Wall-Mounted Fiber Optic Terminal Box Self-Operated





8-Port Wall-Mounted Fiber Optic Terminal Box Self-Operated

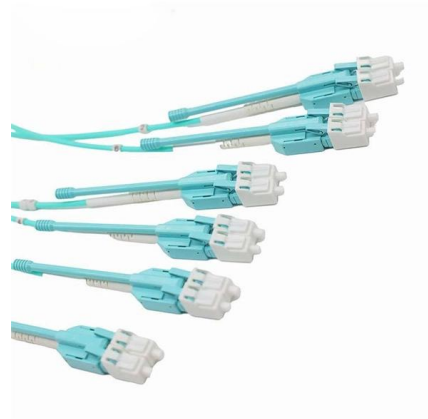


8-Port Wall Mount Fiber Optic Terminal Box for FTTH GPON EPON

Steel tape wall-mount fiber terminal box with 8 ports, SC adapters, and splitter options. Ideal for FTTH, telecom, and CATV applications.

HUAWEI FTTH 8 Cores Fiber Optic Terminal Box

Telhua's HUAWEI FTTH 8-core fiber optic terminal box delivers high-density, reliable termination with IP65 protection. Features tool-less installation and meets



4/8 Ports Wall Mounted Fiber Optic Terminal Box as Distribution Box

Mounted Fiber Optic Terminal Box as Distribution Box is used to distribute and protect the optical fiber links in FTTH Network. It is available for the distribution and terminal connection of various kinds of

8-fiber Optic Terminal Box, SC Simplex/LC Duplex, IP55, Wall/Pole

FTB-SC8-WOPA type fiber optic terminal box is designed for FTTx application, which is cable to meet at least 8 users requirements. It can help splicing, splitting, storage and management with suitable space.



8 Cores Wall Mounted Fiber Optic Terminal Box As

The FS/WLA-SC8 we provide is a kind of high quality, micro sized optical fiber termination box made of quality cold-rolled steel sheet and undergoes static plastic spraying treatment, which can be used to



Fiber Optic Termination Box DIN Rail 8 Port SC Simplex ,

DIN Rail Termination Box 8 SC Simplex The DIN rail termination box is specifically designed for fiber optic cable terminations in industrial applications. This box



8 Ports LC SC Wall Mount Fiber Optic Termination Box

This 8 Ports LC SC Wall Mount Fiber Optic Termination Box Cable Optical Terminal Enclosure is made of 1.2mm metallic material itable to work with 8 pcs SC





8 Ports Wall Mounted Fiber Optic Terminal Box Installation , FS

8 Ports Wall Mounted Fiber Optic Terminal Box Installation , FS-Fiberstore



8 Ports Fiber Optic Termination Box

The 8 Ports Fiber Optic Termination Box is a weatherproof, wall-mounted enclosure ideal for FTTH applications. It supports up to 8 SC adapters or pigtails and can



TBS8 Wall Mounted Fiber Terminal Box

Explore the features and parameters of TBS8 Wall Mounted Fiber Terminal Box Contact OTRANS for Your Telecommunication Equipment Solutions.

8 Port Fiber Termination Box Wall Mounted

The 8 port fiber termination box is designed for efficient fiber management in indoor FTTH and FTTB networks. It features a compact, wall-mounted design with an



8-Core Wall Mount Fiber Optic Terminal Box With CRS

This product is 8-Core Wall Mount Fiber Optic Box with electrostatic spraying, 2 inlet ports, durable CRS steel, 9-year warranty for Data Center FTTX.



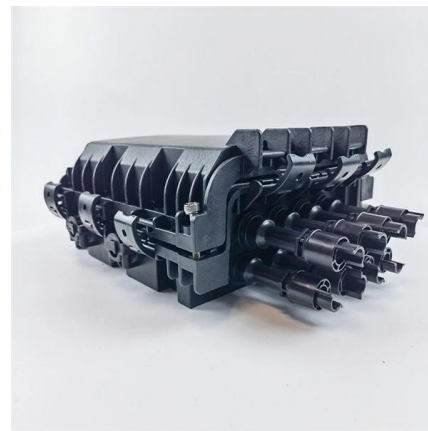
8 Port Optical Fiber Termination Box, Metal

This wall mounted fiber termination box is equipped with 8 external adapter ports,



Indoor Metal Fiber Terminal Box With 8 Adapter Ports, 8

The 8 ports metal fiber terminal box is similar to the fiber optic patch panel in appearance and function, which designed to connect optical fiber cable and



8 Port fiber optic termination box

8 port fiber optic termination box includes ABS type fiber splitter distribution box and wall mountable metallic fiber terminal box. 8 port fiber splitter distribution boxes are designed to work with 1:4, 1:8





8 Port Wall Mount Fiber Optic Termination Box Outdoor

This fiber termination box comes with easy-to-open cover & base type to make



8 Core NAP ODP FTB FTTH 3 Inlet Fiber Access

8 port Optical Fiber Distribution Box Indoor / Outdoor Wall Mounted comes with 2 fiber cable ports + 8 ports for drop ftth fiber optic cables. It can install 8pcs

8 Port Optical Fibre Terminal Box SC/LC , IP65 Wall Mount

8 way Wall mounted IP65 Fibre optic termination box unloaded. Suitable for SC and LC bulkhead adaptors. It is applicable indoor or outdoor FTTH usage. Buy online at low price.



8 Core NAP ODP FTB FTTH 3 Inlet Fiber Access

The 8 port Fiber Distribution Box is sturdy in structure, lightweight in size, and



8-Port Wall Mount Fiber Optic Terminal Box for

Steel tape wall-mount fiber terminal box with 8 ports, SC adapters, and splitter options. Ideal for FTTH, telecom, and CATV applications.



8 Port Wall Mount Fiber Optic Patch Panel

the 8 port fiber patch panel fits wall mount, its small size is ideal to install in inside cabinet, it is especially for mini-network terminal distribution.

8 Fibers Wall Mounted Fiber Optic Terminal Box as Distribution Box

8 Fibers FS/WLA-SC8 Type Wall Mounted Termination Box The Fiber Optic Terminal Box is a kind of fiber optic management products used to distribute and protect the optical fiber links in FTTH Network.



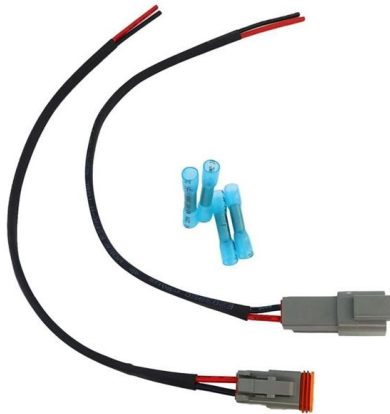
8 Port Optical Fibre Terminal Box SC/LC , IP65 Wall Mount

The wall-mounted optic fibre termination box allows for easy organization of optic fibre cables (up to 4 fibres, depending on the installed adapters.) The holes inside the box are suitable for installation of



8 port FTTH Fiber Distribution Box-/FAT/OTB/FTB

8 ports FTTH Fiber Cable Distribution Box (FDB)/Fiber access terminal box (FAT)/optical termination box (OTB) Fiber termination box (FTB) Outdoor



Fiber access terminal box 8 Port

Telhua's 8-Port Fiber Access Terminal Box delivers the reliable, high-density termination solution demanded by modern B2B networks. Engineered for rapid

8-fiber Optic Terminal Box, SC Simplex/LC Duplex, IP55, Wall/Pole Mount

8-fiber Optic Terminal Box, SC Simplex/LC Duplex, IP55, Wall/Pole Mount, Indoor and Outdoor FTB-SC8-WOPA type fiber optic terminal box is designed for FTTx application, which is cable to meet at



Contact Us

For datasheets, pricing, or custom high-speed optical interconnect solutions, please visit:
<https://www.syropy.com.pl>