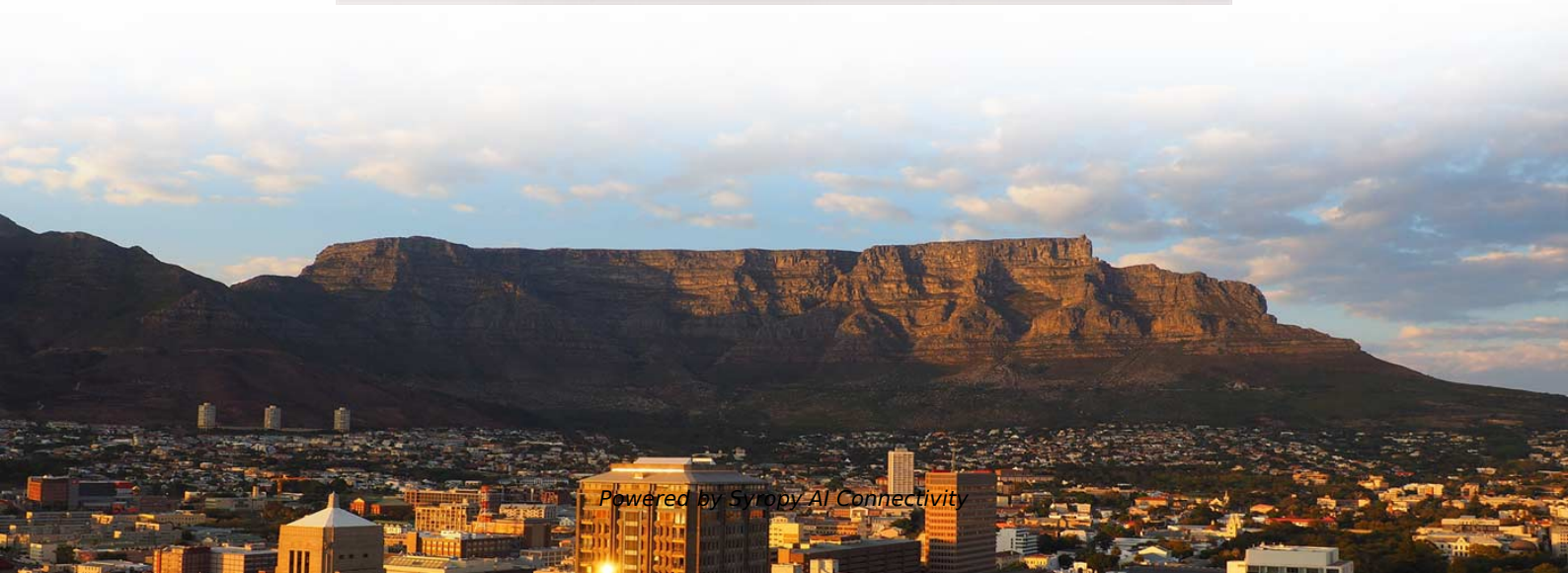
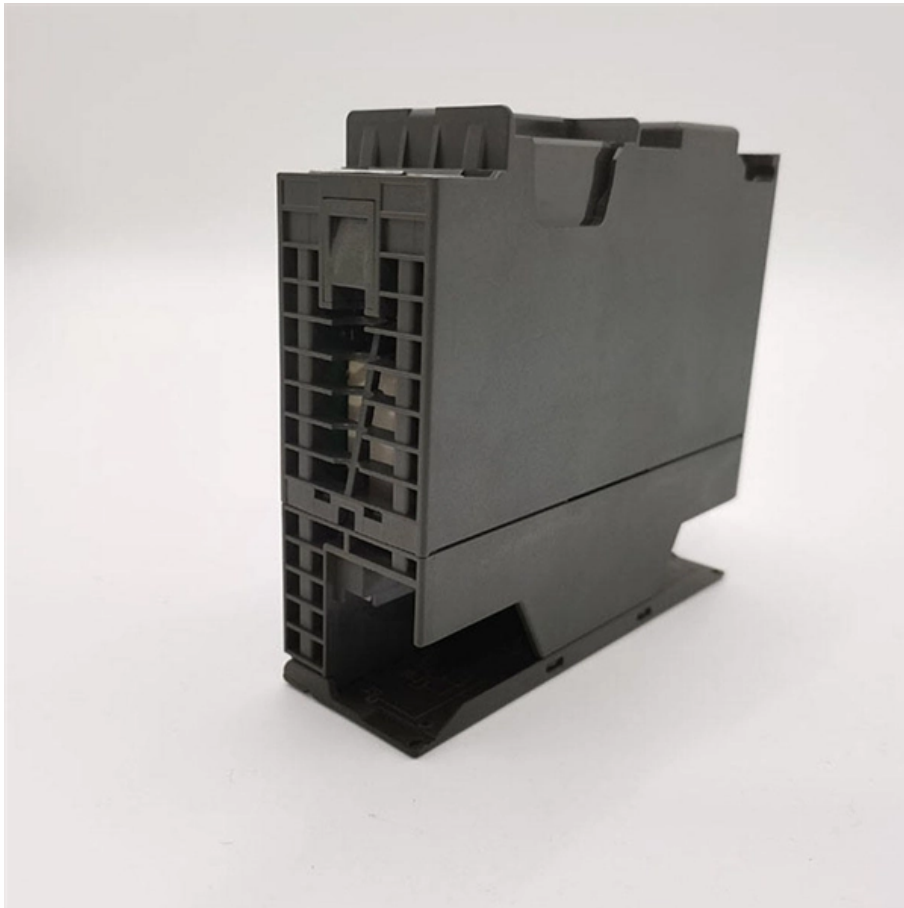


6-fiber 8-electrical gigabit core switch





6-fiber 8-electrical gigabit core switch



Sixnet ® ET-8EG-MIL-1 IP67 Unmanaged Industrial

This IP67-rated unmanaged Ethernet switch ensures high throughput and minimum downtime with auto-sensing ports. Proven in demanding military contexts and

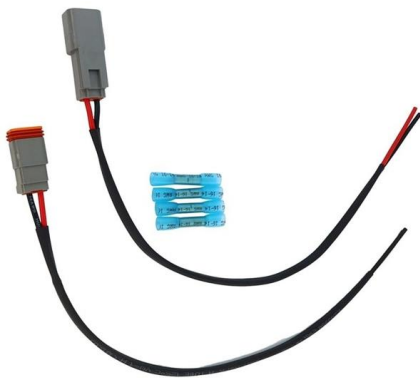
Gigabit 6-port Easy managed Ethernet switch

The switch has high reliability, easy installation and maintenance, a fast switching function, and multiple access ports, which are suitable for access to LAN devices



Fiber Optic Network Switches , Ethernet to Fiber

Buy fiber network switches to extend ethernet network over fiber. Order Versitron high speed fiber optic network switches for fiber optic switches application. Our



Cisco 6000 Series Switches Data Sheet

These switches deliver bandwidth levels ranging from 12.8 Tbps to 51.2 Tbps, making them suitable for a wide variety of roles, from traditional data center Top-of-Rack (ToR) deployments



10G uplink 54-port core routing switch- Aggregation/Core

L3 managed Ethernet core routing switch with 6*1/10G uplink SFP+ fiber ports and 48*100/1000M SFP ports. Built-in 75W power supply and supports 1U/19" cabinet



Exploring the Best 8-Port Gigabit Ethernet Switches for

Explore fibermall about 8-port Gigabit switches! Find the best options to enhance your network performance in this detailed guide.



Campus Switches RG-S5760C-24GT8XS-X 24-Port GE Electrical

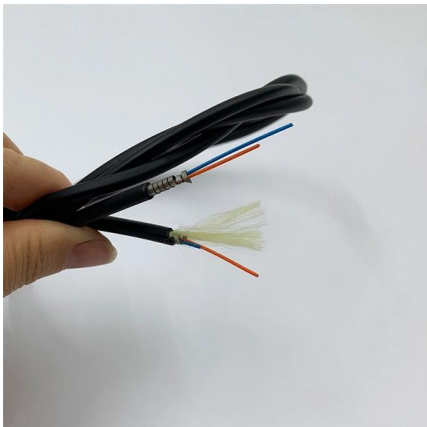
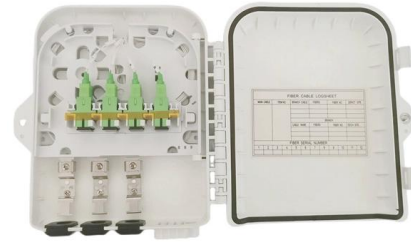
Core switch for small and medium-sized enterprise networks, with high scalability, efficiency, and manageability, and device-level and link-level reliabilities for stable connectivity.





Passive optical network

Passive optical network A fiber optic cable assembly with SC APC connectors, as commonly used to link optical network terminals to passive optical networks A



Managed Switches

Tackle complex networks with NETGEAR managed switches. Get PoE, SFP, and multi-gig support, plus cloud or local control. Shop now and power your business

FS S5860-20SQ?24??? ??????L3????

FS agile S5860-20SQ managed switch is ideal for large-scale campus network aggregations, small and medium-sized network cores, and can be used for



Technology Guide: Ethernet Cables and Transceivers Overview

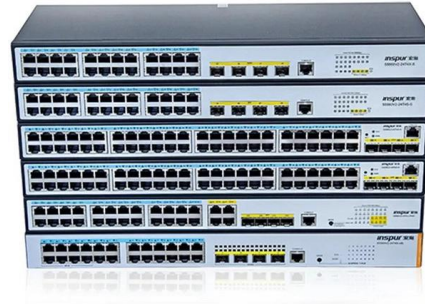
Cables and Transceivers Overview Intel® Ethernet network adapters support a broad number of standards compliant to the Institute of Electrical and Electronics Engineers (IEEE). This document





Guide to Ethernet Network Cables

Ethernet Cable Guide for Category (Cat) Cables, including shielding of STP, FTP, UTP cables, cable colors, RJ45 pinouts, EIA TIA T568A and T568B standards,



Gigabit Ethernet Cable Pinout, EIA/TIA 568A and

This tutorial lesson explains the difference between Gigabit and Ethernet/FastEthernet cable pinouts. Gigabit Ethernet EIA/TIA 568A and EIA/TIA

Cisco Switch Selector

These entry-level, noiseless Gigabit Ethernet switches provide enterprise-class Layer 2 switching with basic security, quality of service (QoS), Power over Ethernet



HPE Aruba Networking CX 6300 Switch Series

The HPE Aruba Networking CX 6300 Switch Series is a modern, flexible, and intelligent family of stackable switches ideal for access, aggregation, and data center top-of-rack (ToR). Featuring a



Fiber Ethernet

GS-6311-16S8C4XR L3 16-Port 100/1000X SFP + 8-Port Gigabit TP/SFP + 4-Port 10G SFP+ Managed Ethernet Switch with 36-72V DC Redundant Power



QFX5100 Ethernet Switch Datasheets , HPE Juniper

To learn more about the QFX5100 Ethernet Switch read this data sheet for a summary of the product features, benefits, specifications, and ordering information.

MikroTik · Switches

A compact 1U 400G switch built for AI clusters, storage fabrics, and high-speed aggregation, featuring four 400G QSFP56-DD ports, dual 10 Gigabit Ethernet,



Network Switches , Huawei Enterprise

Huawei campus switches are ideal for building future-proof campus networks with simplified management, high reliability, and service intelligence, across industries



What Is an SFP Port on a Gigabit Switch?

An SFP port (Small Form-Factor Pluggable port) on a Gigabit switch is a dedicated slot designed to support SFP modules, enabling flexible data



What is a Gigabit Ethernet Switch? Benefits,

EtherWAN's full gigabit Ethernet switches provide high port density, and are an economical solution for applications with high bandwidth demands.

REINFORCED VIRGIN PVC TRUNKING

Superior Crush Resistance

	37.6MPA Tensile Strength		2856MPA Elastic Modulus
	9.8KJ/M² Impact Strength		1.54G/CM Density



Cisco Switch Selector

The next-generation Cisco® MDS 9132T 32-Gbps 32-Port Fibre Channel Switch provides high-speed Fibre Channel connectivity from the server rack to the SAN



EX4200 Ethernet Switch with Virtual Chassis Technology Datasheet

Product Description The Juniper Networks® EX4200 line of Ethernet switches with Virtual Chassis technology combine the high availability (HA) and carrier-class reliability of modular systems with the



Gigabit 6-port managed Ethernet switch-Aggregation/Core switch

The ONV-H3006FM is a gigabit managed Ethernet fiber switch independently developed by ONV. It has 4*10/100/1000Base-T adaptive RJ45 ports and 2*100/1000Base-X uplink SFP fiber ports.



Industrial Rail-type Lite Managed 8* Gigabit Electrical

This series of products adopts industrial rail design. The 8*Gigabit Ethernet + 4*Gigabit optical network switch is a new generation of multi-service access

AXIS D8308 Fiber Aggregation Switch

Developed for long distance fiber installations. Equipped with eight SFP+ ports, two additional SFP28 ports and one RJ45 console port for configuration. With AXIS



Gigabit 16-port L2+ managed Ethernet switch

L2+ managed Ethernet fiber switch with 8*10/100/1000M RJ45 ports and 8*100/1000M uplink SFP fiber ports. It built-in power supply and 1U/19" cabinet

24 Port Fiber Switch



Upgrade your infrastructure with a powerful 24 Port Fiber Switch. Featuring Layer 3 management, stable fiber connectivity, and enterprise-grade performance for



The Ultimate Guide to Network Ethernet Cables:

Network Patch Cable Buying Guide Welcome to the ultimate guide to network Ethernet cables! Whether you're a tech enthusiast or a novice looking to

Contact Us

For datasheets, pricing, or custom high-speed optical interconnect solutions, please visit:
<https://www.syropy.com.pl>