

5G Base Station Grade Coherent Optical Module 1G Selection Guide





5G Base Station Grade Coherent Optical Module 1G Selection Guide



400G Coherent Optics Guide: ZR, ZR+ & MZR Comparison

Master 400G coherent optics with our comprehensive guide covering ZR, ZR+, MZR variants, reach capabilities, power consumption & deployment

Understanding the Coherent Transceivers

Do you clearly understand coherent transceivers? Let's learn about their definition, components, classification, differences between non-coherent



Guide , 100G Optical Module: 5 Dimensions And

In the field of optical communications, the demand for high-speed connections continues to surge, and 100G optical modules have become the core

Optical Module Solutions for 5G& 5.5G Network Deployment

As an indispensable component of network infrastructure, optical modules play a crucial role in the deployment of 5.5G networks. This article will delve into the optical module solutions



A Complete Guide to Selecting 100G QSFP28 Optical

Choose the best 100g qsfp28 optical transceiver for your network by comparing compatibility, distance, fiber type, and future-proofing options.



Telecom Optical Transceivers , Coherent

Use Coherent optical transceivers for telecom applications such as datacenter interconnects, metro, long haul and edge networks, and mobile 5G access



Test and Measurement for Coherent Optical Transceivers

Components can be packaged and connectorized or can be probed on wafer with a probing station as is frequently the case with high-speed chips. Once the required

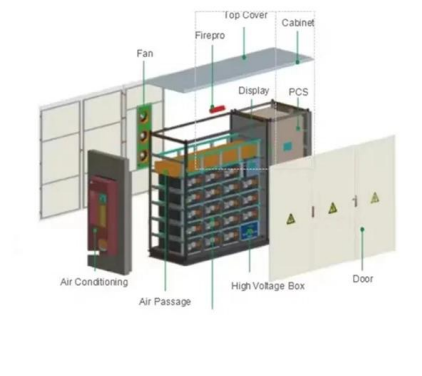
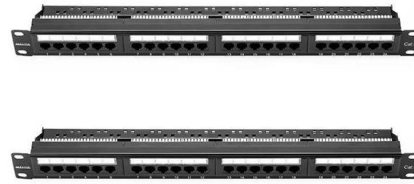


Key Tips for Selecting the Best 100G



Optical Module

Drive your network performance with advanced 100G optical modules designed for high-speed connections and intelligent networks. Stay ahead in the evolving landscape of optical



The Best Optical Transceiver Modules for 5G Fronthaul

The fronthaul optical module mainly includes 25Gb/s and 100Gb/s two rate types, supporting hundreds of meters to 20 km of typical transmission distance.

Comprehensive Guide: Applications, Installation

This comprehensive guide aims to delve into the fundamentals, applications, installation, and configuration of 1G optical modules, while also



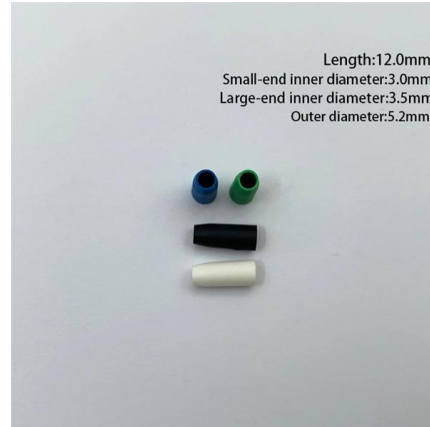
SFP Optical Module Selection Guide for 2025: Key

Explore our comprehensive SFP optical module selection guide for 2025. Learn about crucial factors like data rate, distance, fiber type, and



SFP-1G-SX Explained: The Essential Guide to 1G

Discover how this module powers core enterprise networking. The relentless demand for faster, more reliable network infrastructure makes fiber



Comprehensive Guide to Optical Transceiver

Understanding their classifications and types is essential for selecting the appropriate module for specific networking requirements. This guide covers

FS Community

Hier sollte eine Beschreibung angezeigt werden, diese Seite lässt dies jedoch nicht zu.



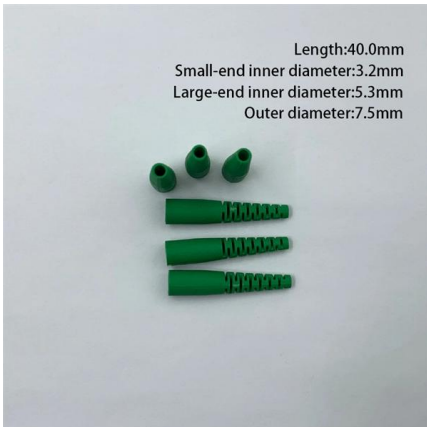
SFP GE SFP Guide

Single-Mode Optical 1000BaseLX SFP Interface per ODU Speed: 1 G Mode: Single Wavelength: 1310nm Kit Contents: SFP Module, Cable Gland (P16 Long), Licence Key document Spare Glands:



10G Optical Module Selection Guide: LRM, SR, LR, ER, ZR

The 10G SFP+ dual-fiber optical module is a small pluggable optical transceiver that adopts a dual-fiber bidirectional design. It completes signal transmission (Tx) and reception (Rx)



Choosing the Right 1G SFP Transceivers for Your Network Upgrade

With the increasing range of applications, many 1G SFP transceivers are available. However, choosing the right 1G SFP modules for your specific requirements can be difficult. If you

A Guide to Choosing 1G Modules: Your Comprehensive

In the fast-paced networking world, the choice of 1G modules can significantly impact the performance and reliability of your network



SFP Types Explained: 1G Modules, Distances & Selection

1G SFPs aren't "all the same." Media (fiber vs copper), wavelength, reach, connector, temperature grade, and even application domain (Ethernet,



SFP Types Explained: 1G Modules, Distances & Selection

See 1G SFP types--SX/LX/EX/ZX, BiDi, CWDM/DWDM, and 1000BASE-T--with distances, wavelength pairs, temp grades, and



Cisco Transceiver Modules

Cisco Transceiver Modules - Learn product details such as features and benefits, as well as hardware and software specifications.

1G SX SFP Module Specifications and Compatibility Guide

This guide provides a complete overview of 1G SX SFP Modules, covering technical specs, compatibility, deployment best practices, and answers to frequently asked questions. By



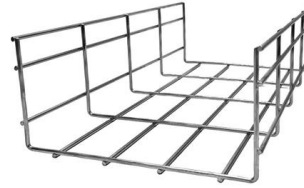
100G Single-Fiber Optical Module: New Choice for High-Bandwidth

Typical Application Scenarios for 100G Single-Fiber Optical Modules (1). 5G Transport Network: In the backhaul link between the 5G core network and base stations, the 100G single-fiber



SFP vs SFP+: A Complete Guide to Compatibility and

Explore the ultimate guide to SFP vs SFP+ compatibility, covering interoperability and backward compatibility of SFP+ modules for seamless high



Optical Fibers for 5G - Types & Selection Guide

Learn which optical fibers are best for 5G networks. Compare G.652D, G.657A1/A2, and multimode fibers for fronthaul, backhaul, and dense deployments.

Coherent Optical Modules - GIGALIGHT

GIGALIGHT provides a series of passive 6CH or 12CH 5G OMUX (CWDM, LWDM, DWDM, and MWDM) with ultra low insertion loss and industrial-grade operating temperature range, specially



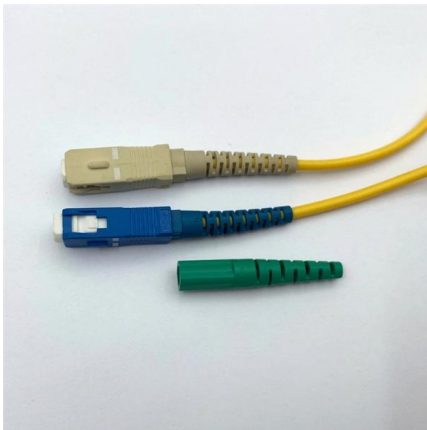
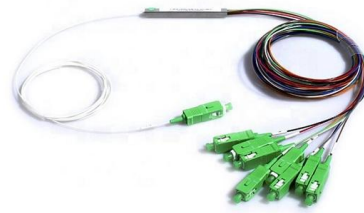
Arista Optics Modules and Cables

All interface speeds, from 1G to 400GE have connectivity options that include Direct Attach copper Cables (DACs), Active Optical Cables (AOCs), multi-mode fiber and single-mode fiber transceivers.



Coherent Passive Optical Network technology for 5G

Since the introduction of fiber to the home (FTTH) services based on 1Gbps passive optical network (PON), the demand for higher speed PON has been increasing due to huge demand for broadband



BRCM_ Network Connectivity Selection Guide 051821 dd

These environmentally friendly transceivers provide the same functionality, performance, quality and reliability that are characteristic of Broadcom world-leading fiber optic components.

Contact Us

For datasheets, pricing, or custom high-speed optical interconnect solutions, please visit:
<https://www.syropy.com.pl>