

5-Circuit Cable Tray Specifications





5-Circuit Cable Tray Specifications

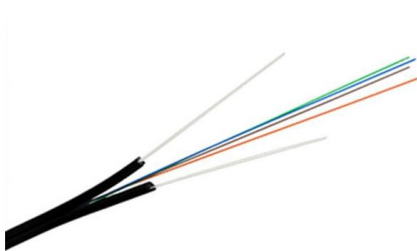


CATALOG Cable Tray Cable tray systems

Unlike the conduit system, the cable tray system allows the installer to pull tray cables from one termination enclosure to the next before insertion and termination.

Cable Tray Width, Dimensions and Specifications as per

Cable Tray Width, Dimensions and Specifications as per NEC Learn about cable tray width dimensions and specifications as per NEC standards. Understand types,



Cable Tray Installation Specifications , PDF , Sheet

This document provides installation guidelines for cable trays, including: 1) Cable trays come in perforated and ladder types, with perforated trays made of steel

26 05 36 Cable Trays for Electrical Systems

EATON B-LINE SERIES GUIDE SPECIFICATION
Section 26 05 36 - CABLE TRAYS FOR
ELECTRICAL SYSTEMS 26 05 364/2025 Specifier
Notes: This product guide specification is written



TYPE PLTC/ITC-ER

DESCRIPTION ADC's Type PLTC/ITC-ER shielded pairs with an overall shield have PVC insulation with an overall sunlight resis- Class 1 Division 2 Industrial Hazardous Locations. For use in cable tray,

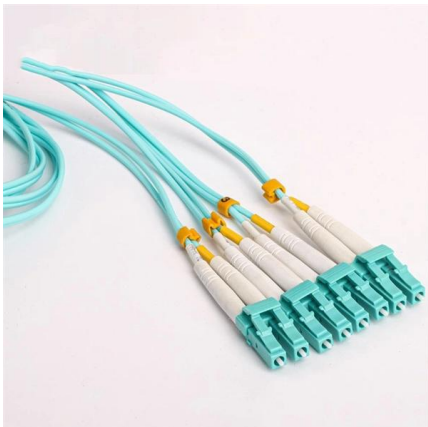


Product Specifications: CABLE TRAY

AS/NZS 4680:2006 FDG CABLE TRAY FDG Cable Tray is designed to continuously support cable systems including; Power, Data, and Audio Visual. A quick and easy system to install without the

Types of Cable Typically Used in Cable Tray

Types of Cable Typically Used in Cable Tray The purpose of a cable tray system is to support, route, and protect cable as part of the cable management system.



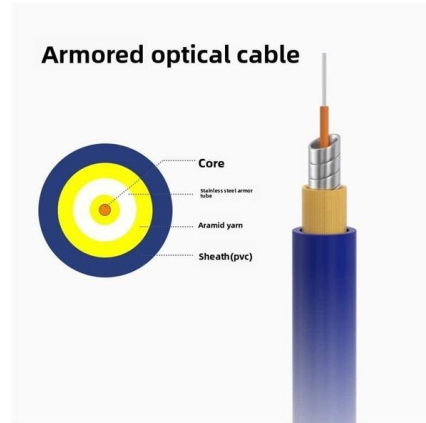
Cable Trays Selection Guide: Types, Features,

Cable trays are components of support systems for power and communications cables and wires. A cable tray system supports and protects both power and



cable tray technical specifications

All light duty tray and accessories do not have a return edge. Also light duty tray of widths 150mm and un-der do not require the use of couplers as they have a swage joint. For sizes that do require a pair



IEEE 525-2007_accepted

IEEE-SA Standards Board Abstract: The design, installation, and protection of wire and cable systems in substations are covered in this guide, with the objective of minimizing cable failures and their

Cable Tray Dimensions Guide: Standard Sizes, Tray

Explore standard sizes by tray type, understand width and depth limits, and see how to calculate and choose compliant cable tray sizes for real projects.



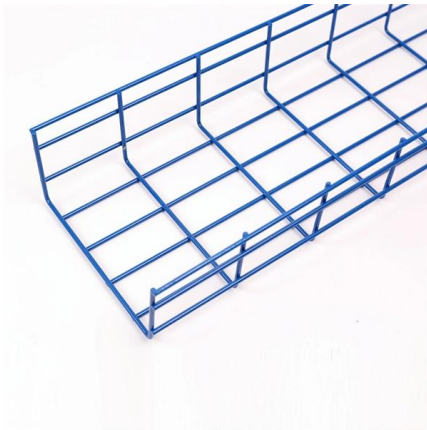
Tray Cable , Tray Cable Inventory for Industrial Use

We provide flexible installation options, including single and multi-conductor tray cables that can be installed in free air, raceways, or direct burial. Whether you



Cable Tray

Cable Tray Cable trays are mechanical support systems that provide a rigid structural system for electrical cables, raceways, and insulated conductors used



LEGRAND CABLE TRAYS TECHNICAL GUIDE

NEMA VE 1-2017 Specifies requirements for metal cable trays and associated fittings designed for use in accordance with the rules of Canadian Electrical Code, Part I and the National Electrical Code®

B-Line series Cable Tray Design Considerations

As an industry leader in cable tray, Eaton offers one of the widest ranges of cable management solutions available in the market today with its B-Line series portfolio. With unmatched quality and service, we



Instrumentation Tray Cable: Type ITC , UpCodes

This section outlines the specifications and guidelines for using Instrumentation Tray Cable (Type ITC) in instrumentation and control circuits with a maximum of 150 volts and 5 amperes. It details permitted





CABLE TRAY SYSTEMS GUIDE

It is designed for mechanical support and strain relief in long runs of cable and creates a smooth gradual bend for cable. Rail and stringer material is 16 ga steel tubing.



Cable Tray Technical Guide A practical guide to product selection and

Cable tray installed in a hazardous location must contain only those cables that are appropriate for this type of environment as defined in Chapter 5 of the NEC.

CABLE TRAY SYSTEMS GUIDE

CONCENTRATED STATIC LOADS: Some applications may require the cable tray to support the weight of a single, dead object in addition to the cable loads. Specifications typically require this to be



Cable Tray Dimensions and Specifications as per NEC

Many electrical systems employ cable trays. They route cables safely & efficiently. NEC defines minimum cable tray size & electrical installation



26 05 36 Cable Trays for Electrical Systems

Description: This product category covers metal cable trays and metal cable tray systems intended for field assembly and for use in accordance with Article 392 of NFPA 70.



Microsoft Word

Cable Tray Types & Specification Perforated Cable Trays Features Moderate ventilation with added cable support advantage Thickness available 1.2mm, 1.6mm, 2.0mm, 2.5mm, 3.0mm.

Contact Us

For datasheets, pricing, or custom high-speed optical interconnect solutions, please visit:
<https://www.syropy.com.pl>