

4U Switch 1U Authentication





Overview

The FortiSwitch unit supports EAP-PEAP, EAP-TTLS, EAP-TLS, and EAP-MD5. To use the RADIUS server for authentication, you must configure the server before configuring the users or user groups on the FortiSwitch unit. 1x authentication prevents unauthorized devices (clients) from gaining access to the network. Unless otherwise noted, the term switch refers to a standalone switch or a switch stack. Important: U describes height only, but a server's real "capabilities" are also determined by chassis depth, internal layout, airflow, rails, power, and expansion (PCIe/risers, NVMe). 1X authentication works by using an authenticator port access entity (the switch) to block ingress traffic from a supplicant (end device) at the port until the supplicant's credentials are presented and match on the authentication server (a RADIUS server). This chapter provides the following information about configuring and monitoring user authentication on Enterasys® N-Series, S-Series®, and K-Series modular switches, A-Series, B-Series, C-Series stackable fixed switches, and D-Series, G-Series, and I-Series standalone fixed switches.



4U Switch 1U Authentication



1U vs 2U vs 4U Servers: What "U" Means & How to

Learn what a rack unit (U) is, how 1U/2U/4U differ, and how to pick the right chassis height for disks, PCIe/GPU, noise, power, rails, and airflow. ?

Server Rack U Sizes Guide

Commonly encountered server rack sizes include 1U, 2U, 4U, and 6U. A 1U server rack, the smallest in this range, is well-suited for installing



What is U Height: Rack Units Explained

Rack Units (U Height for 1U,2U,4U rack server)
Historical Perspective on Rack Units The concept of rack units is rooted in the EIA-310 standard,

What does 1U, 2U, 3U Mean? Rack Units Explained

What does 1U actually mean? We see 1U often mentioned in technical articles, especially in the context of data centers. 2U, 3U, etc.



Matrix KVM Switch 1U Rackmount 4X16

KVMSwitchTech sells 1U Rackmount 4x16 KVM Matrix Switch for government and military applications at competitive prices with 2 Year Warranty.



Configuring User Authentication

This chapter provides the following information about configuring and monitoring user authentication on Enterasys® N-Series, S-Series®, and K-Series modular switches, A-Series, B-Series, C-Series



Choose the Perfect Rackmount Server Case: 1U to 4U

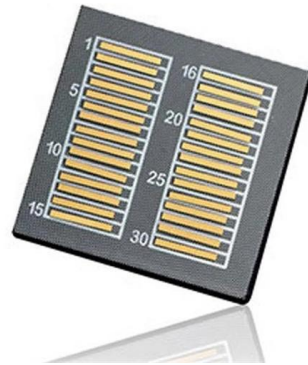
Learn how to choose the right rackmount server case. Understand 1U to 4U sizes and pick the best fit for your server setup and needs.





ethernet switch 1u , Newegg

Search Newegg for ethernet switch 1u. Get fast shipping and top-rated customer service.



Security Configuration Guide, Cisco IOS XE 17.18.x (Catalyst 9200

Authentication is the way a user is identified prior to being allowed access to the network and network services. The implementation of authentication is divided into Authentication,

UniFi Pro Switch Datasheet

Switching Performance The UniFi Pro Switch offers the forwarding capacity to simultaneously process traffic on all ports at line rate without any packet loss.



802.1x authentication , FortiSwitch 6.4.5 , Fortinet Document Library

To control network access, the FortiSwitch unit supports IEEE 802.1x authentication. A supplicant connected to a port on the switch must be authenticated by a RADIUS server to gain access to the



1U/2U/4U (Rack Unit) - Definition & Detailed Explanation

I. What is a 1U/2U/4U (Rack Unit)? 1U, 2U, and 4U are terms used to describe the height of a piece of equipment designed to be mounted in a standard 19-inch server rack. These

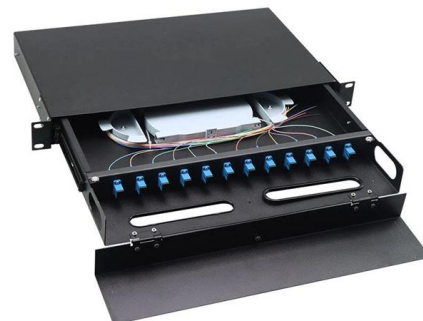


What Is The Size Of "U" In A Server Rack

Discover the standard size for "U" in a server rack and understand its importance in organizing and maximizing space. Find

Configure 802.1x Port Authentication Setting on a Switch

This article provides instructions on how to configure 802.1x port authentication settings through the web-based utility of the switch



1u Switch , Newegg

Search Newegg for 1u Switch. Get fast shipping and top-rated customer service.



Integrate FortiSwitch NAC and 802.1X authentication 7.6.4

Starting in FortiOS 7.6.4, you can use both FortiSwitch NAC and 802.1X authentication on the same switch port. After a device is successfully authenticated with 802.1X authentication, the NAC user

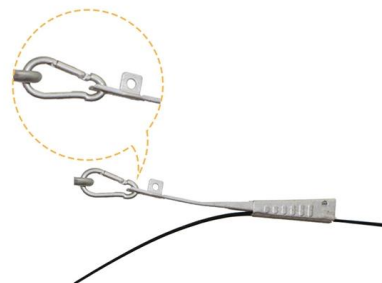


802.1x authentication , FortiSwitch 6.4.6 , Fortinet Document Library

The FortiSwitch unit implements MAC-based authentication. The switch saves the MAC address of each supplicant's device. The switch provides network access only to devices that have successfully been

802.1x authentication , FortiSwitch 6.4.2 , Fortinet Document Library

802.1x authentication To control network access, the FortiSwitch unit supports IEEE 802.1x authentication. A supplicant connected to a port on the switch must be authenticated by a RADIUS



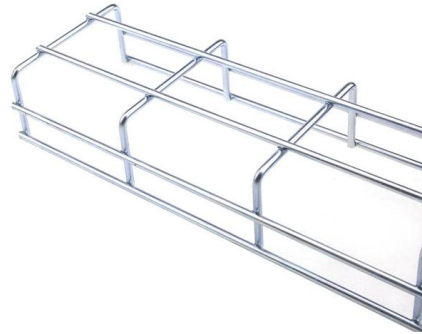
RackSolutions 19 inch 1U-4U Vertical Wall Mount Rack

1U - 4U Sizes Available 1U - 4U vertical network racks available for rack mounting 19-inch server and telecommunications equipment including heavy servers, patch



TP-Link Omada JetStream 24-Port PoE+ Smart preklopnik (Switch),

TP-Link Omada JetStream 24-Port PoE+ Smart preklopnik (Switch), 24x10/100M, 2xG-LAN, 2xG SFP, 1U 19" rackmount (250W) - 250 W PoE Budget: 24x 802.3at/af-compliant PoE+ ports with a total

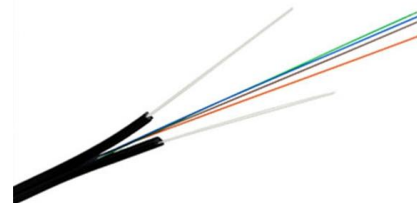


802.1X Authentication , Junos OS , Juniper Networks

Successful authentication requires that the VLAN ID or VLAN name is configured on the switch acting as 802.1X authenticator, and that it matches the

802.1x Wired Authentication on a Cisco switch 3550 With ACS 4.2

Introduction This Document provides you the basic DOT1X configuration with ACS 4.2 using Radius protocol for Wired authentication. Prerequisites Switch 3550 ACS 4.2 Requirements



Security Configuration Guide, Cisco IOS XE 17.18.x (Catalyst 9300)

IEEE 802.1x authentication prevents unauthorized devices (clients) from gaining access to the network. Unless otherwise noted, the term switch refers to a standalone switch or a switch stack. Switchports



Mellanox 1U Switch Systems Hardware User Manual

Mellanox®, Mellanox logo, BridgeX®, CloudX logo, Connect-IB®, ConnectX®, CoolBox®, CORE-Direct®, EZchip®, EZchip logo, EZappliance®, EZdesign®, EZdriver®, EZsystem®, GPUDirect®,



Setting up port-based 802.1x authentication in a FortiLink setup

An authentication server--the actual server doing the authentication, typically a RADIUS server. It decides whether to accept the end user's request for full network access.

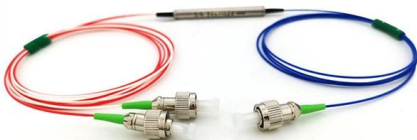
What Is 1U, 2U, 3U, 4U, 5U, 6U, and 7U?

The 1U, 2U, 3U, 4U, 5U, 6U and 7U are all different sized rackmount servers, and the "U" following the number is short for unit. The number indicates the size of the rackmount, 1U being the



AP4434A

Schneider Electric USA. AP4434A - APC Netshelter Rack Automatic Transfer Switch, 1U, 20 A, 208V, 2 C20 IN, 8 C13, 1 C19 OUT, 50/60Hz.

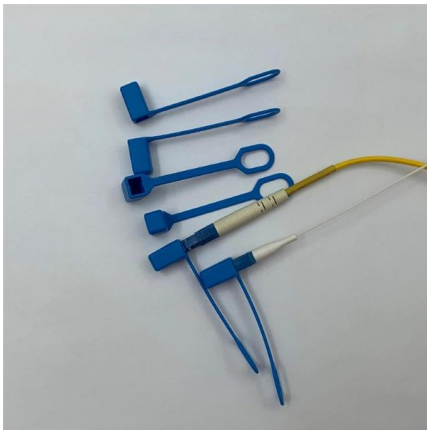


802.1X authentication , FortiSwitch 7.2.10 ,



Fortinet Document Library

To use the RADIUS server for authentication, you must configure the server before configuring the users or user groups on the FortiSwitch unit. The FortiSwitch unit implements MAC



MSI Server Barebones: 1U, 2U, 3U, 4U Racks & Multi-Node

Discover MSI's server barebones featuring Intel, AMD, and Ampere tech. Ideal for single or dual-socket and multi-node configurations, perfect for HPC, AI, Storage, and Data Centers.

What does 1U, 2U, and 4U in the server refer to?

The shape of the rack server does not look like a computer, but like a switch, there are 1U (1u = 1.75 inches), 2U, 4U and other specifications. The rack server is installed in the standard 19-inch cabinet.



Contact Us

For datasheets, pricing, or custom high-speed optical interconnect solutions, please visit:
<https://www.syropy.com.pl>