

# 48-port core switch throughput





## Overview

---

For its total, non-blocking throughput, the 24-port model supports up to 26 Gbps, while the 48-port model supports up to 70 Gbps. The Cisco Catalyst 9500X switches, based on the Cisco Silicon One™ Q200 ASIC, are purpose built for the next-generation core, with a programmable pipeline (P4), and are the first network silicon to offer switching capacity up to 12. Available with 24 or 48 RJ45 Gigabit ports, the UniFi Switch is a fully managed Gigabit switch, delivering robust performance and intelligent switching for your growing networks. The UniFi Switch offers the forwarding capacity to simultaneously process traffic on all ports at line rate without any. A reliable, easy-to-use switch without the complexity of management, the TL-SG1048 provides 48 10/100/1000Mbps ports.



## 48-port core switch throughput

---



### **TL-SG1048 , 48-Port Gigabit Rackmount Switch , TP-Link**

What This Product Does The 48-Port Gigabit Switch TL-SG1048 is designed to meet the needs of the most demanding workgroup and departmental connectivity

### **UniFi Switch Datasheet**

Switching Performance The UniFi Switch offers the forwarding capacity to simultaneously process traffic on all ports at line rate without any packet loss. For its total, non-blocking throughput, the 24-port



### **EdgeSwitch Datasheet**

Advanced Switching Technology for the Masses Build and expand your network with Ubiquiti Networks® EdgeSwitch®, part of the EdgeMAX® line of products. The EdgeSwitch is a fully managed, PoE+

### **Tolly217126DellEMCNetworkingS4100Switches**

The Dell EMC Open Networking (ON) switches provide 880Gbps of backplane bandwidth and were tested with a full complement of 48 10GbE ports plus four 100GbE ports with over 800MPPS of



### Cisco Catalyst 2960-L Series 24-Port and 48-Port



Front Panel This section describes the front panel components of a 24-port and 48-port Cisco Catalyst 2960-L switch. 24 or 48 downlink ports of one

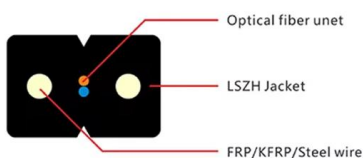
### UniFi Standard 48

Power Consumption. A 48-port, Layer 2 switch with a silent, fanless cooling system.



### Edge-Core AS4610-54P 48-Port PoE Switch

The Edge-Core AS4610-54P is a high performance 260G gigabit ethernet Layer 3 switch loaded with ONIE compatible with Pica8 PicOS.





## The Ultimate Guide to Choosing a 48-Port Gigabit

Explore fiberball's guide to 48-port Gigabit switches. Compare features, find insights, and choose the perfect solution today!



### Edge-Core DCS201 AS5835-54X

The Edge-Core DCS201 AS5835-54X switch is engineered to meet the demands of modern network environments. Featuring a robust design that supports 48 10 Gigabit Ethernet ports,



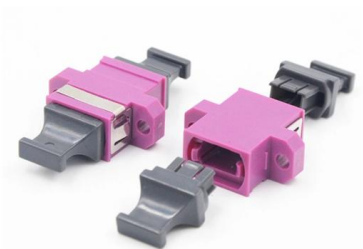
### IES5120-48T4S, 48-Port Gigabit Ethernet L2+ Managed

This Layer 2+ industrial managed switch supports IEEE 1588v2 PTP for precise time synchronization. It also enables transparent transmission of PROFINET,



### Cisco Catalyst 3850 Series Switches

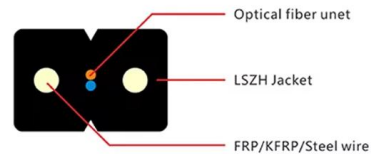
Each 48-port Cisco Catalyst 3850 provides 40 Gbps of wireless throughput (20 Gbps on the 24-port model). This wireless capacity increases with the number of members in the stack.





## 48 Port Switches -- Streamline Your Network

A 48 port switch can be suitable for certain roles within a data center, such as ToR or edge aggregation. They're not typically used as core switches in large-scale data



### 48-Port 10G SFP+ Ethernet L3 Data Center Switch

N6100-48X8C is a low latency 10G Ethernet L3 data center switch with 48x 10Gb SFP+, 8x 40/100Gb QSFP28, Broadcom Chip, supporting MLAG and RoCE.

### MS120 Overview and Specifications

Overview Cisco Meraki MS120 switches provide Layer 2 access switching, ideal for branch and campus deployments. The MS120 series features a variety of power options designed to



### TL-SG1048 , 48-Port Gigabit Rackmount Switch , TP-Link

The TL-SG1048 features non-blocking wire-speed architecture with a 96Gbps switching capacity for maximum data throughput. An 8K MAC address table



### **Juniper Networks EX4100-F-48P 48 Ports PoE+ 4x10GbE New**

Understanding of Juniper Networks 48 Ports Managed Switch The EX4100-F-48P 48-port PoE+ Layer 3 managed switch is engineered for enterprise-grade access layer deployments requiring high port

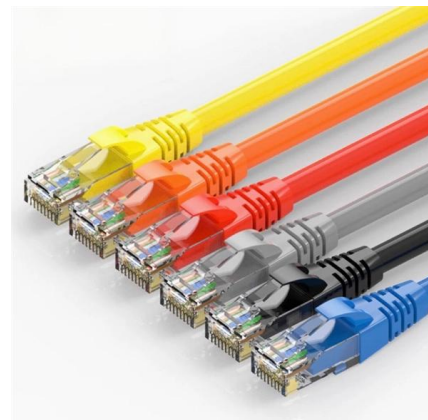


### **Performance / Throughput of a Switch**

MPPS stands for million packets per second and Cisco prefers to refer throughput in MPPS. For a layer-3 switch an MPPS value is shared one. For some of the higher-end Cisco routers

### **Cisco Catalyst 9500 Series Switches Data Sheet**

The Cisco® Catalyst® 9500 Series switches are the next generation of enterprise-class core and aggregation layer switches, supporting full



### **Cisco Catalyst 1000 Series 24-Port and 48-Port Switch**

Cisco Catalyst 1000 24-Port and 48-Port Fast Ethernet Switches This section describes the front panel components of Cisco Catalyst 1000 24-port and

### **HP A5810-48G Switch**



The HP A5810-48G Switch delivers unparalleled QoS across 48 10/100/1000Base-T Ethernet ports, two multiplex Gigabit Ethernet (GbE) combination SFP ports, and two 10-GbE SFP+ ports for the most

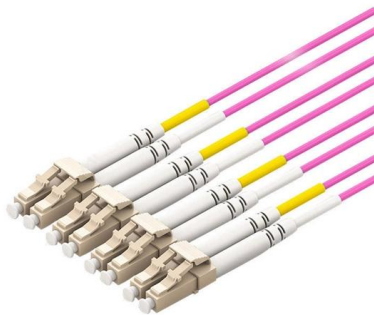


### Cisco Catalyst 1000 Series 24-Port and 48-Port Switch Hardware

Technical Specifications Cisco Catalyst 1000 Series 24-Port and 48-Port Switch Hardware Installation Guide

### S5800-48F4S Switch Datasheet , FS

48-port 1Gb SFP and 4-port 10Gb SFP+ in a compact 1RU form factor and it's a low latency L2/L3 Ethernet switch. The S5800-48F4S comes with the complete system software with comprehensive



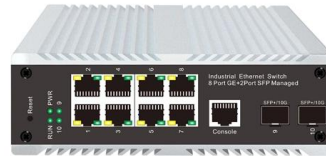
### 7520 , Extreme Networks

The Extreme 7520 are purpose-built 48-port 10Gb and 48-port 25Gb switches designed for high-performance aggregation and core applications.



**Cisco C9350 Series Smart Switches Data Sheet**

Cisco C9350-48P features 48 downlink ports with 10M/100M/1G speeds and 30W PoE per port, providing a total PoE budget of 1440W. Cisco C9350-48P supports up to 200G bandwidth for

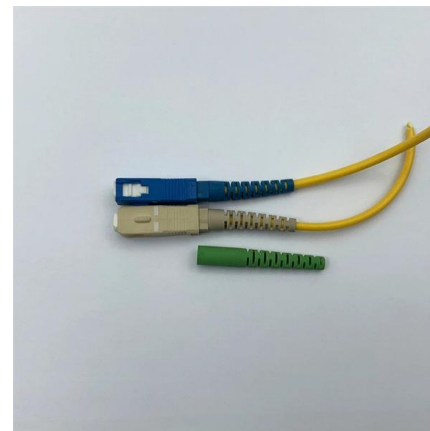


**UniFi Standard 48 PoE (Gen1)**

Layer 2, PoE switch with (48) GbE, PoE+ and 24V passive PoE RJ45 ports, (2) 1G SFP ports, and (2) 10G SFP+ ports.

**100G 48-port Omni-Path Top-of-Rack Switch SSH-C48Q/SSH-C48QM**

Designed specifically for HPC, the 48-port SSH-C48Q products offer 9.6 Tb/s total fabric bandwidth. High scalability with the capability of 27,648 nodes in 2-tier configuration.



**48-port 10G/25G L3 Aggregation Fiber Switch with 8**

Zyxel CX4800-56F high-density 100G/25G Layer 3 aggregation switch with Nebula cloud, 4.0 Tbps capacity, and high-availability system design.



## Best 48-Port Gigabit Switch: Tested and Reviewed

In this guide, we've tested and reviewed the best 48-port Gigabit switches available today to help you make an informed choice.



## Best 48-Port Network Switch in 2026: Tested and

In this guide, we've tested and reviewed the best 48-port network switch on the market to help you find the right one for your network setup.



## Contact Us

---

For datasheets, pricing, or custom high-speed optical interconnect solutions, please visit:  
<https://www.syropy.com.pl>