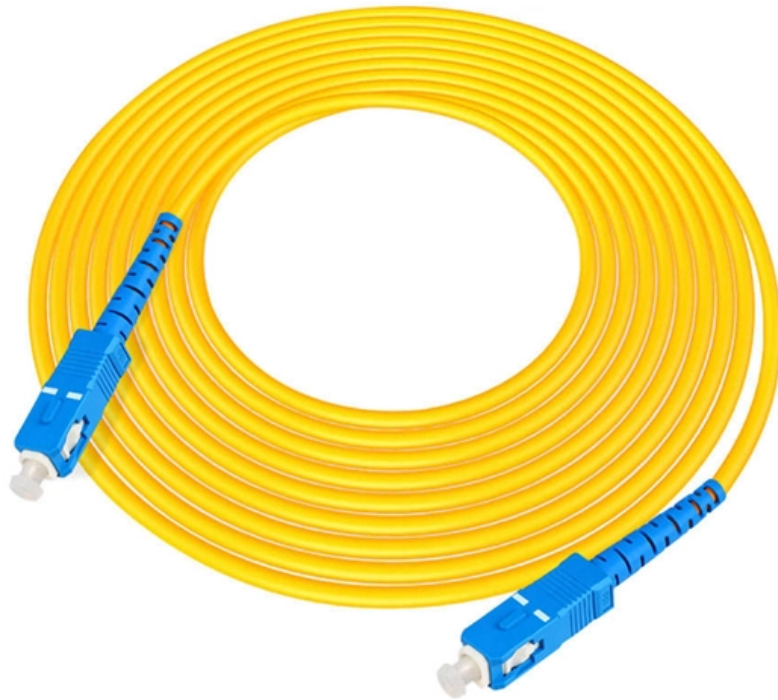




**Syropy AI Connectivity**

# **42u Network Cabinet Standard Cabinet Dimensions**





## Overview

---

ÜÇ-ER 42U cabinets are manufactured at 600 mm width with three depth options. How to Choose a 42U Server Rack Cabinet for Your Data Center or Server Room Quick Specs - 42U Server Rack Cabinet Overview A fully loaded 42U server rack cabinet has the capacity for over 3000 lbs of networking equipment, averages 5. 7") Packaging: 209 kg (460 lb) Rack: 164 kg (361 lb) SPCC steel Doors/side panels; 1. They are optimized to help maximize floor space utilization, expedite installation, simplify cable management. This SmartRack® 42U rack enclosure is designed for server rooms, IT closets, micro data centers, edge computing applications and other environments with essential rack-mount IT equipment. Constructed from heavy-duty steel with a durable black powder-coated finish, the SR42UB has a maximum. The 42U Rack is completely customizable and can handle even the heaviest loads - up to 3,000lbs! The 42U Universal Server Racks and.



## 42u Network Cabinet Standard Cabinet Dimensions

---



### Choosing the Right Network Cabinet Size -

A 42U cabinet is the tallest and holds the most equipment. Think of them like different-sized filing cabinets--you pick the size based on how much you need to

### Waterproof Outdoor Server Racks , Outdoor Network Cabinets , AZE

AZE's 19" waterproof outdoor server rack cabinets are ideal for applications where your expensive and sensitive network equipment is exposed environmental factors such as dust and water, the sizes

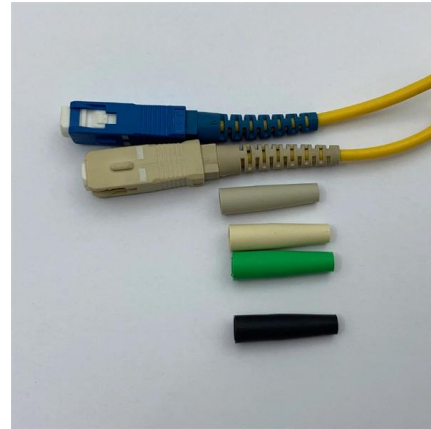


### UniFi 42U Rack Cabinet

Fully assembled floor rack with built-in fans, removable panels, and lockable casters, engineered for optimal airflow, heavy-duty stability, and easy equipment access.

### 42U Server Racks , 42U Network Cabinets , Server

AZE's 42U 800mmWide x1070mmDeep server rack cabinet shall consist of welded and assembled steel frame construction, supporting computer server and data



### Network Cabinet Sizes: Find the Right Fit

Discover standard network cabinet sizes for data centers and server racks. Learn how to choose the right size, customize options, and optimize cable management. Click to explore top-rated



### 42U GR800-Series Cabinet Datasheet , FS

As a server cabinet, suggesting distance between the front rail and rear rail is 850mm. As a network cabinet, suggesting distance between the front rail and rear rail is 700mm.



### Data Cabinet Sizes: Dimensions in mm + 42U Guide

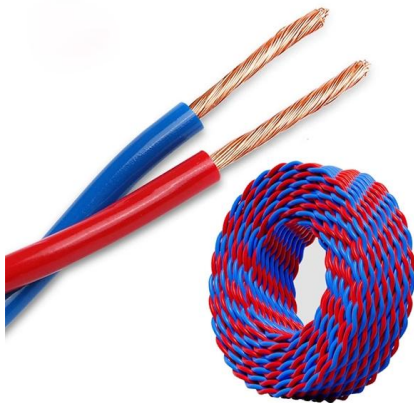
Height is measured in "U" units, where one unit (1U) is approximately 1.75 inches or approximately 44.45 mm. "U" indicates the number of levels the





### Standard Rack Size

What is a 42U Rack Cabinet? A 42U rack cabinet is a vertical enclosure specifically designed to securely house and organize network equipment, servers, and other



### Network Cabinet Sizes: 42U to 48U Standards Explained

Discover the latest network cabinet sizes, from standard 42U to emerging 48U and deep-rack trends. Learn key dimensions, industry standards, and why 48U is becoming the new baseline for data

### Data Cabinet Sizes: Dimensions in mm + 42U Guide

Guide to data Cabinet Sizes: height (U), width, depth, 19" standard. 42U dimensions example in mm. Key recommendation before choosing



### 42U Server Rack, Euro-Series - Expandable Cabinet, Standard Depth

Features Standard-Depth 42U Server Cabinet Accommodates 19 in. Rack Equipment This SmartRack® 42U rack enclosure is designed for network wiring closets, retail locations, classrooms, back offices



## Server Rack Cabinets Sizes: Depth, Width, & Height

Get a comprehensive guide on server rack cabinet sizes and dimensions. Understand the depth, width, and height requirements to fit your IT



### SmartRack 42U Standard-Depth Rack Enclosure Cabinet with Doors

This 42U server rack comes fully assembled for quick and easy deployment with pre-installed (and removable) casters that let you maneuver it over a level surface and through a standard doorway into

### 42U Rack Dimensions & Specifications , AZE

Almost all data centers have standardized on 42U racks. The EIA (Electronic Industries Alliance) standard server rack is a 19 inch wide rack enclosure with rack mount rails which are 17



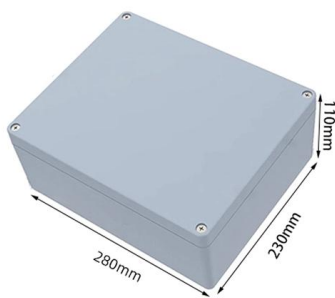
### 42U Rack Dimensions & Specifications , AZE

However, each 42U rack manufacturer's server rack external dimensions will vary. Below are charts of the specifications, sizes, dimensions for the industry's leading 42U enclosure computer



## 42U Server Rack Cabinet: Dimensions, Features & Selection Guide

How to Choose a 42U Server Rack Cabinet for Your Data Center or Server Room Quick Specs - 42U Server Rack Cabinet Overview Total Rack Units 42U (73.5 in / Standard 42U server rack cabinet)



## 42U Server Rack Cabinet: Dimensions, Features & Selection Guide

Here we explain dimensions, construction, cooling considerations, and other important factors that affect the difference between an optimal purchase decision and costly shortfalls - with real technical data

## 42U Cabinet Dimensions - Data Center Server Cabinet Sizes

Full-size floor-standing 42U cabinets house high-density servers, storage arrays, and network equipment. This guide covers detailed 42U cabinet dimensions and selection criteria.



## Space requirements and system cabinet dimensions

The following illustrations show top and bottom views of the system cabinet, and identify the openings through which you can run cable bundles from the floor of



### Recommended Server Cabinet Size

Recommended Server Cabinet Size, Gometal is China manufacturer & supplier who mainly produces network cabinet, network rack, Server cabinet,



### Rittal 42U Server Cabinet Datasheet

Rittal 42U Server Cabinet Datasheet The Rittal 42U Server Cabinet features a perforated transparent door, universal rails, and a multi-piece roof panel for cable entry, designed for server and network

### Server Rack Sizes: Understanding the Differences

At the same time, they can be as small as 5U. Server rack cabinet enclosures, on the other hand, can be a non-standard 18U or 37U. There is no



### 42U Racks , 42U Server Cabinets , Server Room Environments

42U Racks and Server Cabinets Explore the range of 42U server racks and floor standing data cabinets from Server Room Environments with models ranging from low-cost racks designed for computer



### Lenovo 42U and 48U Heavy Duty Rack Cabinets

Lenovo Heavy Duty Rack Cabinets are industry-standard 19-inch 42U and 48U data center cabinets that are designed for high performance and high



- 50KW/100KWH
- HIGHER POWER OUTPUT IN OFF-GRID MODE
- CONVENIENT OPERATION & MAINTENANCE
- PRE-WIRED

### Lenovo 42U and 48U Heavy Duty Rack Cabinets

The 1200mm standard depth of the rack cabinets can be extended by 180mm both in the front and the rear. The front extension can provide additional



### Server Racks and Cabinet Sizes , Server Room Environments

Our offerings include a variety of cabinets and racks with detailed specifications such as server cabinet sizes, comms rack sizes, data cabinet sizes, and data center cabinet sizes. We also provide



### Server Rack Sizes & Dimensions: Depth, Width, & Height

Server rack size & dimensions are important considerations for implementation. We explore standard server rack sizes, including depth, width, & height.





## Contact Us

---

For datasheets, pricing, or custom high-speed optical interconnect solutions, please visit:

<https://www.syropy.com.pl>