

40km optical module optical reception rate





40km optical module optical reception rate



Single Fiber 40 km SFP Optical Transceiver: PLANET

SFP support 100-155Mbps data rate and such applications as 100M Ethernet (100Mbps), STM-1 (155Mbps). SFP Single Fiber optical transceiver is multi

100G QSFP28 ER4 40km Optical Module

HTFuture's 100G QSFP28 ER4 Optical Module supports 40km SMF transmission at 100Gbps, ideal for high-speed data centers and telecom applications.



100G QSFP28 4WDM-40 DML 40km Optical Transceiver

The module converts 4 input channels of 25Gb/s electrical data to 4 channels of LAN-WDM optical signals and then multiplexes them into a single channel for 100Gb/s optical transmission.

Complete Guide to Pluggable Optical Transceivers -

Complete Guide to Pluggable Optical Transceivers Fundamentals & Core Concepts
What are Pluggable Optical Transceivers?
Pluggable optical

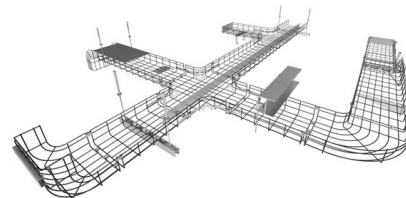


Introduction to 100G Ethernet Long-haul QSFP28 ER4

100G Ethernet optical module originated from the urgent need for high-capacity data transmission. It can provide high-speed 100Gb/s transmission

Extend Your 100G Reach to 40km Transmission with FS Optics

In this article, we will provide a detailed overview of these different types of 40km 100G modules, analyzing their unique features and application scenarios to help you choose the most



40GBASE ER4 QSFP+ Transceiver , 40G DWDM, 40km LC Optical Module

The 40GBASE ER4 QSFP+ 1310nm 40km DOM Duplex LC/UPC SMF Optical Transceiver Module is engineered for high-performance, long-distance data transmission, offering 40 Gbps data rates over



QSFP28 ER4 Optical Transceiver Overview

100G QSFP28 ER4 optical transceiver can reach a 40km transmission distance on the SMF which supports both 100G Ethernet and OTU4 network applications.



100GBase QSFP28 ER4 40KM Optical Transceiver Module CC

The 40km 100GBase-ER4 QSFP28 transceiver is designed to meet the requirements of 100G ethernet links over SMF up to 40km. It is compliant with QSFP28 MSA, IEEE 802.3ba.

Advanced 100Gb/s Optical Transceiver with 40km

High-performance 100Gb/s optical transceiver with extended 40km range and high sensitivity, ideal for long-distance data communication.



40GBase LR4 QSFP+ 20km Optical Transceiver Module

QSFP-40G-LR4-20 40G QSFP+ LR4 Transceiver Module (1271nm, 1291nm, 1311nm, 1331nm SMF 20km LC DDM) The 40G QSFP+ LR4 is a transceiver

3G-SDI CWDM 40km Digital Video SFP



Optical

3G-SDI Video SFP CWDM Optical Transceiver Module (SMF, CWDM 1271~1611nm, 40km, LC, DOM, MSA) Optcore OHPC3G-xx40DCR is a high-performance, cost

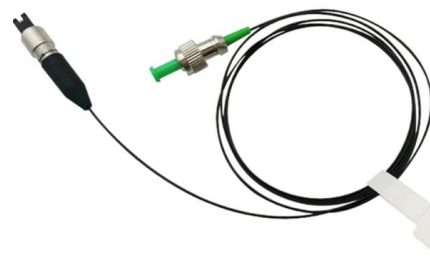


400G Optical Modules Explained: SR4 Vs. DR4 Vs. FR4

Key differences between SR4, DR4, FR4, and LR4 400G optical modules. Expert advice from Asterfusion engineers to optimize your data center

100G QSFP28 ER4 Transceiver: 40km Reach Optical

Get reliable 100G QSFP28 ER4 transceivers from Innoptical for high-performance 40km optical connectivity. Experience seamless interoperability and low power



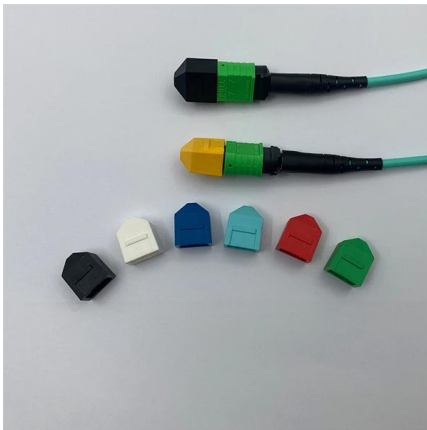
SFP+ BIDI Optical Transceiver, 10G Data Rate, 40 km

High-speed SFP+ BIDI optical transceiver with 10G data rate, up to 40 km range, low power consumption, and full compatibility with various data center equipment.



100G QSFP ZR4 S Optical Module Overview

Thanks to the module's integrated SOA, the QSFP-100G-ZR4-S is smaller than a combination of optical plus amplifier modules, costing less and consuming less power, while

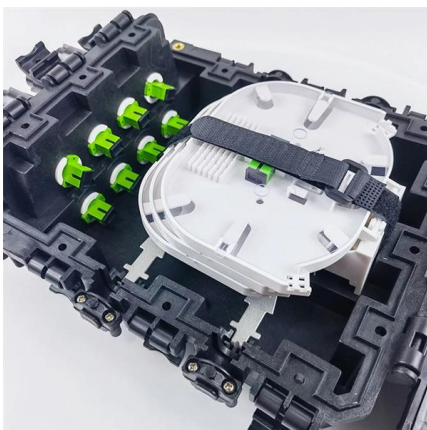


Extend Your 100G Reach to 40km Transmission with FS Optics

100G ER4L The FS QSFP-ER4L-100G module adopts a wavelength of 1310nm and supports up to 100G data rates at 1310nm, reaching transmission distances of up to 40km.

40GBASE-ER4 QSFP+ Guide: Specs, Wavelengths, 40km Optics

40GBASE-ER4 is a long-reach 40GbE optical interface standard that uses four CWDM wavelengths over single-mode fiber to support transmission distances up to 40km. It is defined under IEEE



40G QSFP+ 10~40km transceiver

The QSFP+ module is designed for use in 40GBASE Ethernet throughput up to 10km, 30km or 40km over single mode fiber (SMF) using a wavelength of 1310nm



100G QSFP28 ER1 EML 1310nm 40km Optical Transceiver

GIGALIGHT 100G QSFP28 ER1 optical transceiver module is used for long-distance transmission in the datacom or telecom sector and is compliant with the 100G Lambda MSA 100G-ER1-40 specification.



100G QSFP28 ER4 Transceiver: 40km Reach Optical

100GE ER4 QSFP28 40km Optical Transceiver Description Innooptical's IN-QSFP28-ER4 module is designed for 40km optical communication applications. This

What Are the Key Parameters of Optical Modules

Understand the key parameters of optical modules, including transmission rate, distance, wavelength, and fiber compatibility, for better network



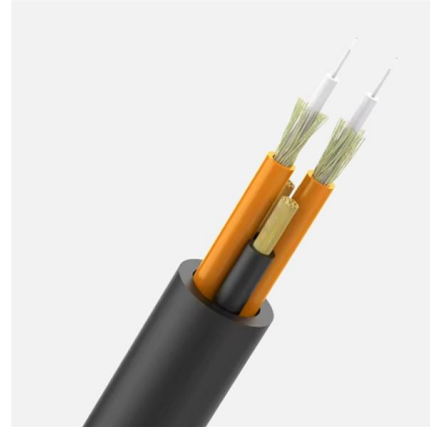
400Gb/s QSFP-DD ER4 1310nm 40km Optical Transceiver

To minimize the optical dispersion in the long-haul system, single-mode fiber (SMF) has to be applied in this module. It can support up to 30km with 400G KP4 FEC and 40km with built-in PFEC.



QSFP28 100G ER4 Optical Module: Technologies and Applications for

This "self-gain" characteristic enables ER4 modules to effectively detect optical signals that have been greatly attenuated over 40km, forming the foundation for ultra-long-distance reception.



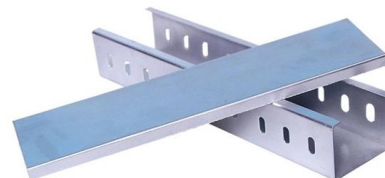
Is the QSFP-100G-ER4L-S Your Best 40km 100G Solution?

The 40km reach of the ER4L module allows providers to consolidate hardware and streamline their network topology. They can bypass intermediate regeneration points that would be



1000BASE-ZX SFP 40km 1310nm , SMF , EDGEOPTIC , EDGE Optical

EDGEOPTIC 1000BASE-ZX SFP 40km transceiver: 1310nm wavelength, 22dB link budget, 100Mbps-1.25Gbps. Ultra-long reach for metro networks, 0-70°C.



Single Fiber 40 km SFP+ Optical Transceiver: Ciena

Ciena XCVR-S40U27 is SFP+ Single Fiber Transceiver supporting 1.25-10.31 Gbps data rate in 40 km distance over Single-Mode Fiber (SMF).



Selecting the Perfect 100G Optical Module Packaging:

A 100G optical module is a high-speed communication device designed for data centers and telecommunication networks, capable of



QSFP-ER4-100GM Datasheet , FS

The QSFP28 Dual Rate Optical Transceiver Module is designed for use in 100GBASE Ethernet and 4x28G OTN client interfaces throughput up to 40km over single mode fiber (SMF) using a

Contact Us

For datasheets, pricing, or custom high-speed optical interconnect solutions, please visit:
<https://www.syropy.com.pl>