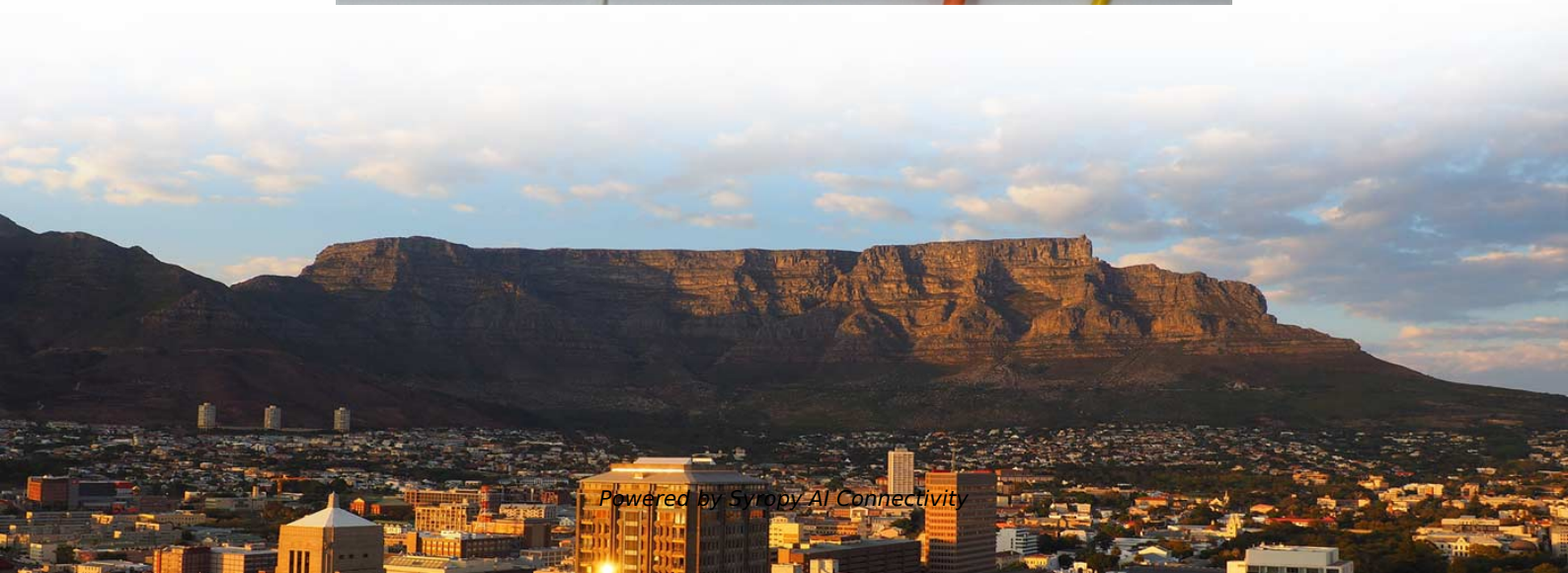


# 400G Liquid-Cooled Switch for Mexico Airport

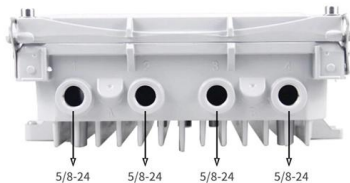




## 400G Liquid-Cooled Switch for Mexico Airport

---

### DynaNET 10G-01



The DynaNET 10G-01 is a high port density switch for Automotive and rugged applications, where extreme levels of performance, reliability and compactness

### Cornelis CN5000 400G Director Class Switch Liquid And Air Cooled

Home Cornelis CN5000 400Gbps Omni-Path  
Launched with UltraEthernet Roadmap Cornelis  
CN5000 400G Director Class Switch Liquid And Air  
Cooled



### High Density 50G/400G PAM-4 Capable Rugged

Amphenol's Rugged 256 Channel Ethernet  
Switch Box is liquid cooled and configurable for  
system connectivity, speeds, port types, and  
interoperation with

### Cisco 400G Data Center Networking

Transform your data center networking  
infrastructure with high-density 400G Cisco  
switches scalable to 800G. Optimized for  
simplicity and sustainability.



### HPE Slingshot 400 Brings a Liquid Cooled 51.2T Switch and 400Gbps

HPE introduces the Slingshot 400 switch with liquid cooling and 51.2Tbps speed; The switch is designed for HPE's liquid-cooled supercomputing platforms; The new switch aims to



### Liquid Cooling Networking |NADDOD

NADDOD 400G InfiniBand and ethernet liquid/immersion cooling transceivers are designed to meet the high-performance demands of next-generation data centers and AI computing clusters.



### Arista touts liquid cooling, optical tech to reduce power

Arista executives discuss liquid-cooled networking gear and support for Linear Pluggable Optics to achieve power and cost optimization for AI data





### Ultra-High-Temperature (399°C, 750°F) Liquid Level

Descripción The LVU-400 liquid level switch is the ideal solution to a host of liquid level sensing and control applications up to 399°C (750°F). The LVU-400 Series,



### What Are Next-Generation Liquid-cooled Switches Like?

Three Difficulties in Designing Liquid-Cooled Switches Difficulty 1: The switch cold plate system belongs to "three-dimensional" assembly, and the GPU

### 7060X4 Series 100G , 200G , 400G Data Center Switches

The Arista 7060X4 series deliver high density 400G switching with line rate performance, proven layer 2 and layer 3 features, and advances in traffic awareness, congestion handling and instrumentation for



### 30xw-5pd.fm

Product Data AQUAFORCE® 30XW150-400 Water-Cooled Liquid Screw Chillers 150 to 400 Nominal Tons (528 to 1407 kW) A30-4905 30XW150-300 Carrier's AquaForce 30XW chillers provide a great



### Special Cables , Airport 400 Hz Cables Overview , Hitech Controls

We offer over 6,000 different Types and Sizes of RoHS Compliant Liquid Tight Strain Relief Fittings, Cord Grips, Cable Glands, Circular Connectors, Conduit System, Industrial Enclosures and Other



### Data Center Switches

Low-carbon and Energy-saving Ruijie's first submersible liquid-cooled switch deployed at large data center scale with high power consumption elimination, energy-saving and emission reduction.

### 400G & 800G Solutions , HPE Juniper Networking US

Explore Juniper's 400G and 800G routing and switching portfolio, offering the industry's most comprehensive and high-performing platforms.



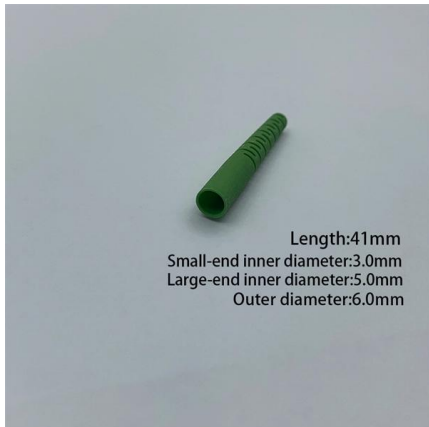
### HPE Slingshot 400 Brings a Liquid Cooled 51.2T Switch and

HPE has just unveiled its Slingshot 400, a cutting-edge liquid-cooled switch offering an incredible 51.2Tbps capacity and 400Gbps networking.



### **Arista developing liquid-cooled network switches**

Networking firm Arista is developing liquid-cooled switches and racks As reported by NetworkWorld and Converge Digest, the company outlined its



### **Data Center Switches**

Ruijie's first submersible liquid-cooled switch deployed at large data center scale with high power consumption elimination, energy-saving and emission reduction.

### **Ruijie Networks Released Near-packaged Optics (NPO) & Cold-plate Liquid**

Ruijie 25.6T Silicon Photonics NPO Cold-plate Liquid-cooling Switch Using the latest 112G SerDes switching chip and 64 connectors, Ruijie 25.6T silicon photonics NPO cold-plate liquid



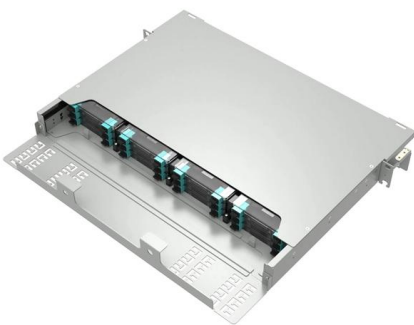
### **Supermicro SSE-T8196 800G/400G Ethernet Switch**

The SSE-T8196 comes with 64 port 400G QSFP112 downlinks and 32 port 800G OSFP uplinks in a 3RU chassis. Depending on the Datacenter cooling options, SSE-T8196 switches come in support



### HPE Slingshot 400 Switch At SC24 2

Home HPE Slingshot 400 Brings a Liquid Cooled 51.2T Switch and 400Gbps Networking HPE Slingshot 400 Switch At SC24 2

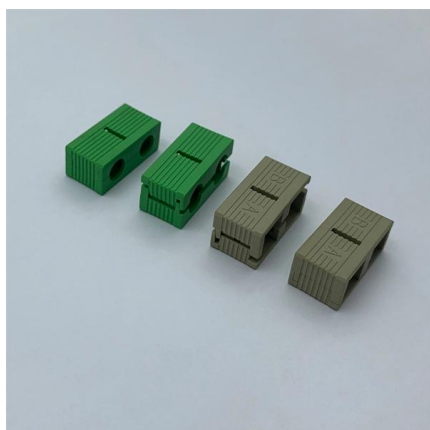
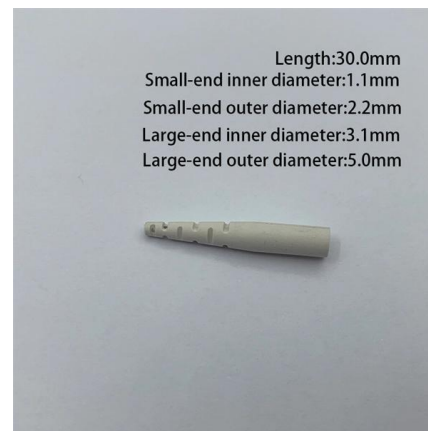


### The NVIDIA GB300 NVLink Liquid-Cooled Switch

NVIDIA GB300 NVLink Switch Tray 1 An especially ingenious aspect of the design lies in the fact that, although the

### MMS4X00-NS 800Gbps Twin-port OSFP 2x400Gb/s Single Mode

A flat-top version offered for liquid-cooled and DGX H100 Cedar7 systems links. The transceiver combinations guarantee optimal operation in NVIDIA end-to-end InfiniBand systems and a rigorous



### H3C Data Center Switches Green Energy-Efficient Technologies

H3C provides single-phase, immersion cooled switches. A single switch can save up to 40 W power in heat dissipation. About H3C liquid-cooled switches H3C provides single-phase, liquid cooled



## 400G & 800G Solutions , HPE Juniper Networking US

Choose from new price-performance options on merchant silicon in our 400G and 800G switches and routers to reach new benchmarks of performance and

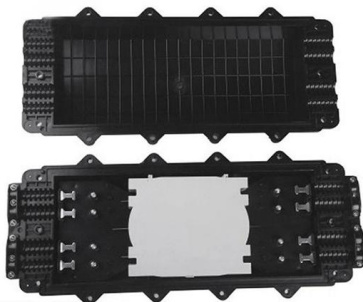


### Data Center 400G Switch Q& A

Explore the most frequently asked questions about Asterfusion's 400G switches, including latency performance, RoCEv2, SONiC support, telemetry, and

### HPE Slingshot 400 Switch At SC24 3

Home HPE Slingshot 400 Brings a Liquid Cooled 51.2T Switch and 400Gbps Networking HPE Slingshot 400 Switch At SC24 3



### Exploring the Future of AI Networking: Liquid-Cooled Switches on the

Today's rack switches are rapidly approaching their thermal limits with the jump to 400G, 800G, and beyond. The consequences can be bottlenecks, throttling, and increased operating costs.



## HPE Slingshot 400 Brings a Liquid Cooled 51.2T Switch and

? Breaking Boundaries with HPE Slingshot 400! ? Hewlett Packard Enterprise is redefining high-performance networking with the Slingshot 400, a game-changing 51.2T switch paired with liquid



Ordering information

NO.	1	2	3	4	5	6
Model	51201	51202	51203	51204	51205	51206
Product name	Switch 400	Switch 400	Switch 400	Switch 400	Switch 400	Switch 400
Illustration						
RU	1	2	4	1	2	4
Maximum number of cores	144	288	576	144	288	576
Product size (including module and airflow)	482.6*1027.6*1100 (mm)	482.6*1027.6*1100 (mm)	482.6*1027.6*1100 (mm)	482.6*1027.6*1100 (mm)	482.6*1027.6*1100 (mm)	482.6*1027.6*1100 (mm)
Standard color code	8AL9005	8AL9005	8AL9005	8AL9005	8AL9005	8AL9005
Inventory	2	2	2	2	2	2

### HAND BAGGAGE PROHIBITED ITEMS

According to official regulations, all liquids, gels and aerosols purchased at the airport's Duty Free stores shall be delivered to the passengers during boarding, once they and their hand luggage have passed

## Contact Us

For datasheets, pricing, or custom high-speed optical interconnect solutions, please visit:  
<https://www.syropy.com.pl>