

4-Port Angled Fiber Optic Panel





4-Port Angled Fiber Optic Panel



Excel Enbeam Fibre Patch Panels

Excel offer a wide selection of feature rich fibre panels for both singlemode and multimode installations, in a choice of SC, LC, ST, APC and MTP.

KEXINT High Density Datacenter 144 Port Angled MPO/MTP Fiber

KEXINT : MTP/MPO 1U Ultra Density Patch Panel Angled has a higher and higher demand on fiber optic connectors with the changes from single mode fiber to multimode fiber, from 10G to 40G, 100G.



Fiber Optic Patch Panel 1U Metal 24 Port SC Duplex Metal Angle Rail ,

1U 19" rack patch panel with 24 SC Duplex ports, featuring a metal angled rail design for enhanced accessibility and cable management.

4 Port Fiber Optic SC Patch Panel Wall Mount Fiber

? Fiber Patch Panel 4 Port Fiber Optic SC Patch Panel Wall Mount Fiber Enclosure Add to wishlist Compare Specification: Matte paint surface treatment Water-proof,



Angled 1U 24 Port UTP-FTP Keystone Jack Panel

The Angled 24 Port Patch Panel increases rack density and facilitates the management of high-density applications for conventional cable management



Panduit CFAPPBL1A Angled 24-Port Multi-Mode Fiber Patch Panel

Fiber Optic Systems By Panduit Ensure that you're up to speed with today's high-data rate fiber-channel and Ethernet applications. Panduit provides advanced bandwidth and mission



4 ports Full Loaded Fixed Rack mount Fiber patch panel

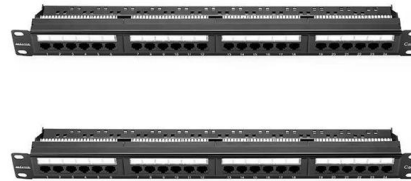
1U 19" 4 ports Full Loaded Fixed Rack Mount Fiber Patch Panel with 4pcs SX SC/UPC Adapters and 4pcs SX SC/UPC G657A1 LSZH Pigtails 1m.





144 Port Angled MTP Patch Panel 1U LC-MTP Multimode OM4

OptoSpan 1U MPO/MTP Patch Panel for quick deployment. This ready-to-install Multimode (OM4) Angled MPO/MTP Patch Panel offers 144 LC ports (36 Quad LC) front and 12 Low Loss MTP Elite



4 Port Fiber Optic Patch Panel, 4 Port Fiber Optic

Product Description 4 port fiber optic patch panel, 4 port fiber optic terminal box with sc adapter Features: Four fiber terminal box, the overall electrostatic pensu



Panduit CPPLA48WBLY Angled 48-Port Patch Panel, Black

Product Description 48-Port angled patch panel with labels, supplied with twelve factory installed CFFPL4 type front removable snap-in faceplates. Release snap feature on faceplate allows



Mini Wall Mount Fiber Optic Patch Panel, 4 Fiber Ports

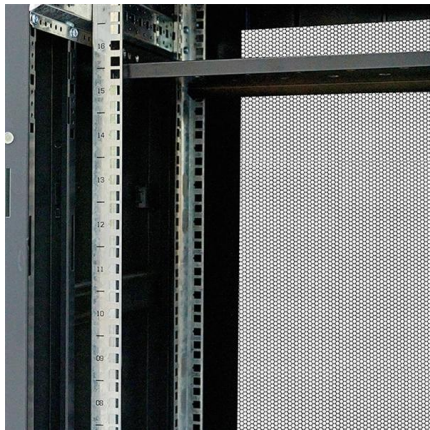
It can support up to 4 optical ports when it is fully loaded. Designed to be compact and lightweight, it can be deployed in various ways, such as mounting on the





1U 144 Port MTP to LC Angled Fiber Patch Panel , EXW

High density 1U 144 port MTP to LC angled patch panel for data centers. Prespliced design, efficient cable management, compact 1.5kg solution from EXW.



4-core foreign trade fiber optic panel, 4-port information

This 4-port fiber optic panel is an FTTH terminal box designed for fiber-in-the-home installations. Made of durable ABS material, it features a large splice box with 4

Fiber Optic Panels

Optimize data center efficiency with our fiber adapter panel. With a range of connector options, enable efficient deployment and future modifications of your



144 Port SC LGX Fiber Patch Panel 4U Rack Mount

144 Port SC LGX Fiber Patch Panel 4U Rack Mount Multimode. Low Loss LGX fiber patch panel. 1U, 2U, 4U LGX modular patch panel with up-to 288 LC, SC ports



1U ANGLED FIBER OPTIC PATCH PANEL

1U ANGLED FIBER OPTIC PATCH PANEL 1Uheight, 12 or 24 port capacity Smooth and convenient telescopic sliding rail system Cable glands to secure the incoming fiber, allows min movement Fiber

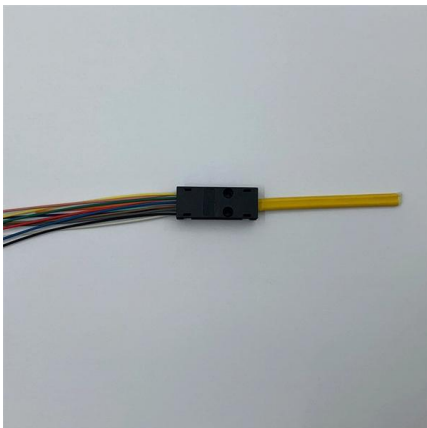
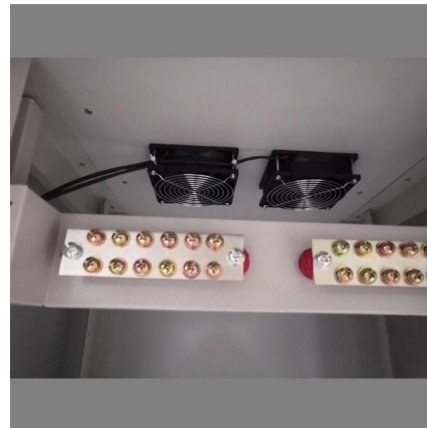


Fiber Distribution Panels , Amphenol Network Solutions

Define your network architecture, choose the panel configuration or modules that fit your requirements, and pick the chassis that best meets your density needs for today and in the future.

1U 192 Port Angled LC To LC Fiber Optic Panel

The Angled 192 Port Fiber Panel is design to enable high density cabling in data center, large corporate networks or telecommunications applications. It can



HDX1U-A96 , HDX Fiber Optic Panel Panels , Leviton

HDX1U-A96 High-density OPT-X(TM) HDX Angled Panels provide an inter-connect or cross-connect between backbone horizontal cable and active



ICC Angled 4-Port Keystone Wall Plate, UL

The angled exit directs cables downward making it ideal for tight spaces or shallow enclosures where rear clearance is limited. Made from



4 Port Fiber Patch Panels

Find 4 Port Fiber Patch Panels related suppliers, manufacturers, products and specifications on GlobalSpec - a trusted source of 4 Port Fiber Patch Panels information.

Panduit FMT1A Opticom Fiber Tray, Angled, 1RU, 4-Port

Mount with CFAPPBL1A angled fiber adapter patch panel to hold up to four FAP or FMP adapter panels. Dimensions: 1.75"H x 17.16"W X 11.16"D (44.4mm x 433.3mm x 283.5mm)



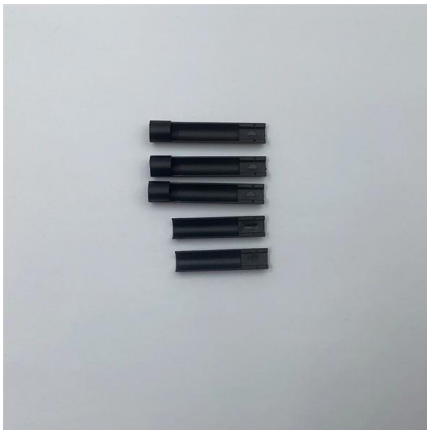
Fibre Optic Panels

FS offers FHD® FAPs and FHU 1U fibre patch panel with LC, SC, MTP®/MPO connectors in singlemode/multimode fibre to deploy medium for high-density fibre optic network applications.



Fiber optic patch panel 4 port

The fiber optic patch panel 4 port is an essential component in modern networking and telecommunications setups. Designed to provide flexible and organized connectivity options for fiber



Fiber Optic Hardware , Fiber Panels, Housings, Racks, and

Corning has a wide variety of hardware solutions to choose from to fit your cabling needs. Choose from racks, panels, modules, splice trays, ethernet fiber switches and other structured cabling components.

Fibre Optic Patch Panels , FOBOT , 4Cabling

Our fibre optic and FOBOT patch panels are made to fit a 19 inch standard rack mount, meaning they can be mounted in any industry standard server rack. Our stock of fibre optic patch panels includes a



Contact Us

For datasheets, pricing, or custom high-speed optical interconnect solutions, please visit:
<https://www.syropy.com.pl>