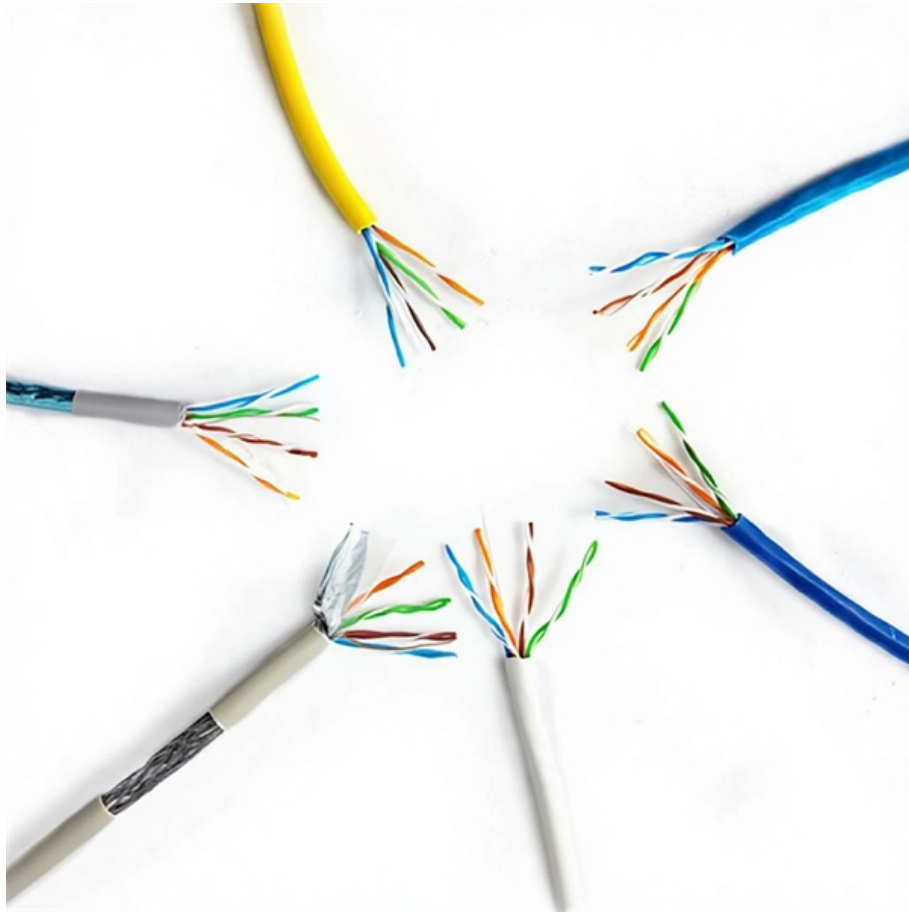
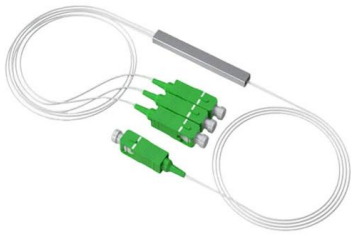


36-degree cable tray climbing slope





36-degree cable tray climbing slope



Cable Tray Installation

Learn everything about cable tray installation with our complete guide. Discover types, steps, and safety tips for efficient electrical cable management.

Aluminum Cable Tray, Series 2, 3 & 4

Specially-designed Ladder Drop-Outs provide a rounded surface with 4" (101 mm) radius to protect cable as it exits from the cable tray, preventing damage to insulation.



Cable Tray Systems

Our cable tray systems securely hold and protect cables and come in many models and sizes, solid bottom and ventilated.

How to create slope Cable tray?

hi everyone, please give me solution for create slope on list of cable tray. if possible or not really i don't know but i needed very urgently because i



Cable Tray SHIB NAL

Cable trays are not raceways, but they are treated as a structural component of a facility's electrical system. Cable trays are a part of a planned cable management system to support, route, protect and

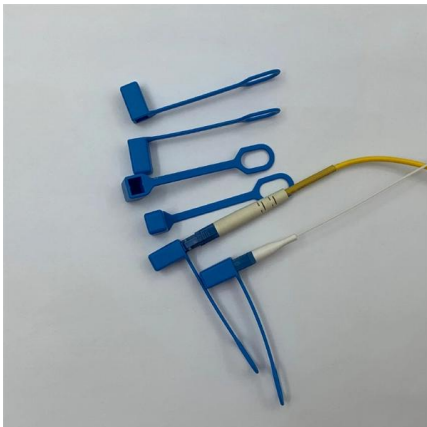


ABB 6 inch x 36 inch x 24 inch Rad 90 Degree CABLETRAY Vertical

Tray ladder vertical bend features U-shaped extrusion forms the fitting siderail. Occupies less space in areas where space is restrained. Splice plate holds components together while hardware is inserted.



Hier sollte eine Beschreibung angezeigt werden, diese Seite lässt dies jedoch nicht zu.



6A-36-30HB36 , Eaton B-Line series horizontal bend , Specifications

Installation instructions KwikSplice Cable Tray System and Redi-Rail Series Universal Fitting Assembly



26 05 36 Cable Trays for Electrical Systems

Perform visual and mechanical checks for adequacy of cable tray grounding; verify that all takeoff raceways are bonded to cable trays. Test entire cable tray system for continuity.

Cable Tray Offset Calculator , Vertical, Horizontal & Compound Offset

Cable Tray Bend Offset Calculator Calculate horizontal, vertical, or compound cable tray offsets based on bend angle, offset distance, and available installation space.



Guide to cable support systems

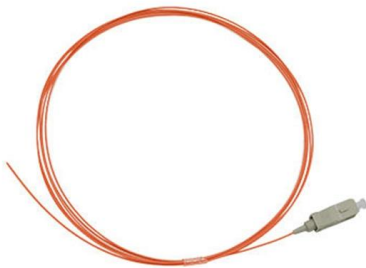
A cable support system consists of cable support lengths and system components, such as cable support fittings, support elements, mounting elements and system accessories. The cable support





TECHNICAL AND SIZING DATA

When vertically stacking ladder trays always maintain adequate clearance above each tray run to allow for the installation of the cable and start with the narrowest (lightest) tray on top and work downwards

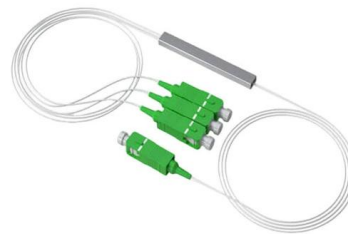


Muzata Black Slope Cable Railing Post 36 Inch for 25-40 Degrees Slope

IMPORTANT to know before purchases: This cable railing post is specially designed for 30-35 degree slope. It is pre-drilled with 10 pairs of angled holes to save your labor.

How to Install Cable Tray: A Comprehensive Guide to Different Cable

Welcome to our step-by-step guide on installing cable trays! In this video, we'll explore the different types of cable trays available and provide detailed instructions for their installation.



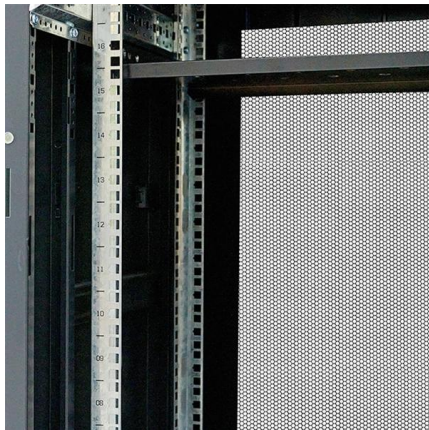
B-Line series Cable Tray Design Considerations

Our wind certification report provides you with list of acceptable B-Line series cable tray supports, fittings and covers based off of the environmental conditions, cable loading, and type of cable tray in your



Cable Tray And Fittings , Graybar Store

A cable tray system is used to support insulated electrical cables used for power distribution, control, and communication. Cable trays are used as an alternative to open wiring or electrical conduit



CABLE TRAY, CABLE LADDER, CABLE TRUNKING CATALOGUE

Fitting and accessories. with the same or different width of the cable run. All fittings are available in sizes and types corresponding to the straight cable tray sections. These fitting are including: elbow,

B-Line series Cable Tray Design Considerations

Is your cable tray system optimized for safety, dependability, space and cost savings? Cable tray (or cable ladder) systems are a popular alternative to electrical conduit systems, as they have an



Best Practice Guide to Cable Ladder and Cable Tray Systems

This publication is intended as a practical guide for the proper and safe* installation of cable ladder systems, cable tray systems, channel support systems and associated supports.



SECTION 270536

Section 26 05 36 "Cable Trays for Electrical Systems" for cable trays and accessories serving electrical systems.



Contact Us

For datasheets, pricing, or custom high-speed optical interconnect solutions, please visit:
<https://www.syropy.com.pl>