

35kV busbar shows no voltage





35kV busbar shows no voltage



Optimizing Busbars for Advanced Applications

Conductor selection Busbars are ideal for the high-power applications that are commonplace in EVs. OEMs first started using busbars in EV battery packs as interconnects for battery modules. To

Busbars and Connectors in HV and EHV installations

In other words, Busbar is a junction where the incoming and outgoing feeders current meets i.e. it collects the power at single point. Busbars for Outdoors Installations



Busbar Testing Procedure Report , PDF , Voltage , Ph

Busbar Testing Procedure Report The document provides a test procedure and report for bus bar equipment. It outlines 6 steps: 1) recording equipment details,

Dielectric Testing of Busbars: A Practical Guide for

If the busbar insulation withstands the applied voltage without signs of breakdown or excessive leakage current, it is considered safe for operation. Any



The essentials of designing MV/LV single line diagrams

I'm highly specialized in the design of LV/MV switchgear and low-voltage, high-power busbar trunking (<6300A) in substations, commercial

Busbar Testing Procedure

Discover the essential procedures & best practices for successful busbar testing. Our comprehensive post covers preparation, equipment setup,



"Busbar Systems"

Three-phase voltage measurement in the branch (with CO3301-5R) and the two busbars: 0 to 500 V. Control voltage: 24 V (for the digital inputs of the isolators and circuit breaker); the earth terminal of



In electric power distribution, a busbar (also bus bar) is a metallic strip or bar, typically housed inside switchgear, panel boards, and busway enclosures for

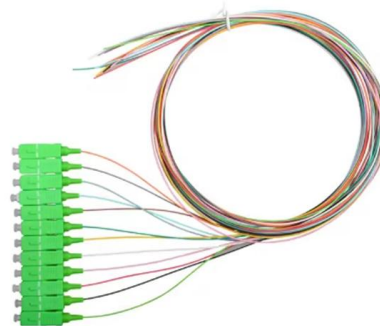


Design and installation of low voltage busbar trunking

Cable jointer not required. Busbar trunking systems may be dismantled and re-used in other areas. Busbar trunking systems provide a better

TPEL2691668

Fig. 11a shows the bus bar with no alterations, whereas Figs. 11b and 11c show it with symmetrical cuts, triangular and round added, respectively. The current density, while not drastically different, has been



Busbar & Tap off box

The busbar tap off unit will have been damaged by the overheating and the spring contacts will have lost their springiness. By filing the busbar and the contacts you will have removed metal



Design Guide for bus bars

The plating can provide advantageous electrical properties, decreasing the voltage drop. When gold is used, it is generally only plated on termination surfaces to



P-BA-0000211_mIHVZ_V11

- 1 Low-voltage compartment
- 2 SIPROTEC bay controller (option)
- 3 Operating mechanism of three-position disconnect
- 4 Gas pressure manometer for switchpanel pole housing
- 5 Gas filling

INFO-RF-based fault diagnosis and analysis method for busbars

This paper presents a method for busbar fault diagnosis and analysis that combines the weighted mean of vectors (INFO) algorithm with the Random Forest (RF) model.



Why a voltage drop at the busbar's generator?

I noted that the voltage at the busbar where the generator is connected, during 11 a.m./15 a.m. decreases instead of increases. This is very

Hier sollte eine Beschreibung angezeigt werden, diese Seite lässt dies jedoch nicht zu.



35kV Distribution Line Single-Phase Ground Fault Handling

How to identify 35kV single-phase ground faults? Use SCADA and voltage analysis now--quickly isolate faults and maintain power reliability!



Bus Protection Theory

The figure shows a typical double busbar configuration. For an internal fault, the busbar protection must identify the faulted bus segment, and trip the circuit breakers attached to that bus segment.



Electrical Busbars

Electrical busbars conduct high current within power systems. Learn about types, maintenance, failures, and how to extend their lifespan.



Insulation of bus bars at 35 kV , Eng-Tips

Cover a substation bus bar with a really good insulator but don't provide a grounded shield and you'll find the same voltage level on both sides of the insulator.



Section 7 Switchgear and controlgear assemblies

7.1.1 Switchgear and controlgear assemblies and their components are to comply with the following standards, as appropriate for the nominal voltage, and amended where necessary for ambient

AREVA WSA OPERATING INSTRUCTIONS MANUAL

The position indicator the appropriate busbar shows "ON". Page 29: Disconnecting The Voltage Transformer 6.7 Disconnecting the voltage transformer (e.g. in case



Agrawal-28New

Placing the busbars together reduces the inductance of the busbars 'Xa', impedance (Z), voltage drop (I.Z) and so also the magnetizing losses to a very great extent. Lesser the spacing between the



Connection between the busbar and IGBT module

The busbar is crucial in high-power converters to interconnect high-current and high-voltage subcomponents. This paper reviews the state-of-the-art busbar design



Busbar & Tap off box

I would hazard a guess that the damaged connection is on the neutral. The loss of the neutral to a three phase board will cause this rise in the voltage on some phases. The busbar tap off

Judgment and treatment method of 35 kV system voltage anomaly

(1) Abnormal measurement circuit: The voltage below the 35 kV busbar transformer is abnormal, but the primary voltage is actually normal. The most likely causes are: high-voltage fuse,



35KV High Voltage Busbar Tubing , Heat Shrink Tubing

35kV high voltage busbar heat shrink tubing is widely used in the insulation protection of high-voltage switchgear busbars, thanks to its outstanding insulation

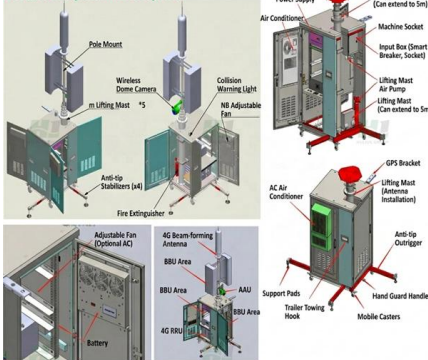


Busbar Processing & Installation: Your Ultimate Guide

These guidelines govern the busbar processing and installation procedures for all low-voltage switchgear and power distribution enclosures



Product Composition Description



Troubleshooting Busbar Current Issues in context of busbar current

However, issues with busbar current can lead to system instability, equipment damage, and even safety hazards. This article provides a comprehensive guide on troubleshooting busbar

Contact Us

For datasheets, pricing, or custom high-speed optical interconnect solutions, please visit:
<https://www.syropy.com.pl>